



WEEKLY SALES SUMMARY

Unaudited

Week Ending: 10/30/2021

Texas Lottery Commission
Fiscal Year to Date Sales Comparison
Unaudited

Through the Week Ending: 10/30/2021 (9 weeks)

Sales by Game	FY 2020*	FY 2021**	FY 2022	\$ Change		% Change	
				FY 2022 to FY 2020	FY 2022 to FY 2021 to	FY 2022 to FY 2020	FY 2022 to FY 2021 to
Scratch Tickets	\$ 801,349,712	\$ 999,254,329	\$ 1,046,960,812	\$ 245,611,100	\$ 47,706,483	30.6%	4.8%
Lotto Texas	19,237,388	32,742,787	22,226,951	2,989,563	-10,515,836	15.5%	-32.1%
Lotto Extra	4,952,282	9,152,286	6,901,173	1,948,891	-2,251,113	39.4%	-24.6%
Pick 3	40,886,394	45,931,033	45,062,040	4,175,646	-868,993	10.2%	-1.9%
Pick 3 Fireball	2,903,786	3,889,650	4,077,320	1,173,534	187,670	40.4%	4.8%
Cash Five	7,667,033	8,298,900	8,232,118	565,085	-66,782	7.4%	-0.8%
Texas Two Step	9,554,332	11,296,790	11,049,587	1,495,255	-247,203	15.7%	-2.2%
Mega Millions	30,601,097	27,772,570	38,725,601	8,124,504	10,953,031	26.5%	39.4%
Megaplier	5,238,272	5,127,277	6,968,887	1,730,615	1,841,610	33.0%	35.9%
MM Just the Jackpot	127,479	116,907	149,475	21,996	32,568	17.3%	27.9%
Daily 4	18,858,834	19,875,855	19,226,858	368,024	-648,998	2.0%	-3.3%
Daily 4 Fireball	2,474,919	3,107,441	3,512,684	1,037,766	405,243	41.9%	13.0%
Powerball	28,980,706	28,189,530	74,982,109	46,001,403	46,792,579	158.7%	166.0%
Power Play	5,039,939	5,247,869	12,990,741	7,950,802	7,742,872	157.8%	147.5%
All or Nothing	5,796,829	6,597,994	7,089,052	1,292,223	491,058	22.3%	7.4%
Total	\$ 983,669,001	\$ 1,206,601,218	\$ 1,308,155,407	\$ 324,486,407	\$ 101,554,190	33.0%	8.4%

* 3 extra days

**1 extra day

Texas Lottery Commission
Fiscal Year Over Year Change in Sales
Unaudited
FY 2022 Compared to FY 2021

		SCRATCH TICKETS				DRAW GAMES				TOTAL SALES			
Week	FY 2022 Week Ending	FY 2022	FY 2021	Difference	% change - Cumulative Sales	FY 2022	FY 2021	Difference	% change - Cumulative Sales	FY 2022	FY 2021	Difference	% change - Cumulative Sales
1	9/4/2021*	\$73,465,895	\$88,381,162	(\$14,915,267)	-16.9%	\$19,754,024	\$22,327,441	(\$2,573,417)	-11.5%	\$93,219,919	\$110,708,603	(\$17,488,684)	-15.8%
2	9/11/2021	\$117,404,128	\$115,145,117	\$2,259,011	2.0%	\$30,567,724	\$25,865,986	\$4,701,738	18.2%	\$147,971,852	\$141,011,103	\$6,960,749	4.9%
3	9/18/2021	\$121,522,543	\$117,098,316	\$4,424,227	3.8%	\$34,044,343	\$25,689,861	\$8,354,482	32.5%	\$155,566,886	\$142,788,177	\$12,778,709	8.9%
4	9/25/2021	\$121,751,048	\$113,153,550	\$8,597,498	7.6%	\$33,618,247	\$24,320,273	\$9,297,974	38.2%	\$155,369,295	\$137,473,823	\$17,895,472	13.0%
5	10/2/2021	\$127,128,919	\$114,375,276	\$12,753,643	11.2%	\$41,420,853	\$23,460,330	\$17,960,523	76.6%	\$168,549,772	\$137,835,606	\$30,714,166	22.3%
6	10/9/2021	\$121,962,687	\$114,802,883	\$7,159,804	6.2%	\$31,994,174	\$21,716,732	\$10,277,442	47.3%	\$153,956,861	\$136,519,615	\$17,437,246	12.8%
7	10/16/2021	\$121,035,307	\$113,280,669	\$7,754,638	6.8%	\$23,150,459	\$20,664,725	\$2,485,734	12.0%	\$144,185,766	\$133,945,394	\$10,240,372	7.6%
8	10/23/2021	\$121,223,866	\$111,745,204	\$9,478,662	8.5%	\$23,980,968	\$21,165,208	\$2,815,761	13.3%	\$145,204,834	\$132,910,412	\$12,294,423	9.3%
9	10/30/2021	\$121,466,419	\$111,272,152	\$10,194,267	9.2%	\$22,663,805	\$22,136,334	\$527,471	2.4%	\$144,130,224	\$133,408,486	\$10,721,738	8.0%
10	11/6/2021		\$113,620,007				\$22,606,708				\$136,226,715		
11	11/13/2021		\$109,577,081				\$22,749,434				\$132,326,515		
12	11/20/2021		\$114,446,332				\$23,397,417				\$137,843,749		
13	11/27/2021		\$106,113,701				\$23,890,237				\$130,003,938		
14	12/4/2021		\$111,508,837				\$26,132,516				\$137,641,353		
15	12/11/2021		\$111,156,442				\$26,432,394				\$137,588,836		
16	12/18/2021		\$112,212,350				\$27,895,989				\$140,108,339		
17	12/25/2021		\$119,456,586				\$30,653,848				\$150,110,434		
18	1/1/2022		\$127,122,270				\$38,528,413				\$165,650,683		
19	1/8/2022		\$133,494,933				\$57,484,861				\$190,979,794		
20	1/15/2022		\$127,542,833				\$87,788,743				\$215,331,576		
21	1/22/2022		\$130,328,004				\$97,504,542				\$227,832,546		
22	1/29/2022		\$130,076,595				\$24,692,518				\$154,769,113		
23	2/5/2022		\$136,640,103				\$24,693,211				\$161,333,314		
24	2/12/2022		\$124,939,795				\$23,636,934				\$148,576,729		
25	2/19/2022		\$75,402,427				\$13,683,523				\$89,085,950		
26	2/26/2022		\$126,573,041				\$23,389,855				\$149,962,896		
27	3/5/2022		\$133,200,697				\$25,627,875				\$158,828,572		
28	3/12/2022		\$134,601,912				\$26,650,604				\$161,252,516		
29	3/19/2022		\$153,635,044				\$27,014,869				\$180,649,913		
30	3/26/2022		\$156,511,371				\$27,238,714				\$183,750,085		
31	4/2/2022		\$158,758,180				\$25,817,113				\$184,575,293		
32	4/9/2022		\$152,261,121				\$25,896,084				\$178,157,205		
33	4/16/2022		\$149,946,632				\$26,330,496				\$176,277,128		
34	4/23/2022		\$147,956,805				\$26,462,493				\$174,419,298		
35	4/30/2022		\$149,268,466				\$28,003,294				\$177,271,760		
36	5/7/2022		\$144,423,251				\$29,055,332				\$173,478,583		
37	5/14/2022		\$143,355,893				\$31,496,103				\$174,851,996		
38	5/21/2022		\$141,392,410				\$35,173,326				\$176,565,736		
39	5/28/2022		\$137,051,585				\$25,478,731				\$162,530,316		
40	6/4/2022		\$138,140,582				\$25,330,096				\$163,470,678		

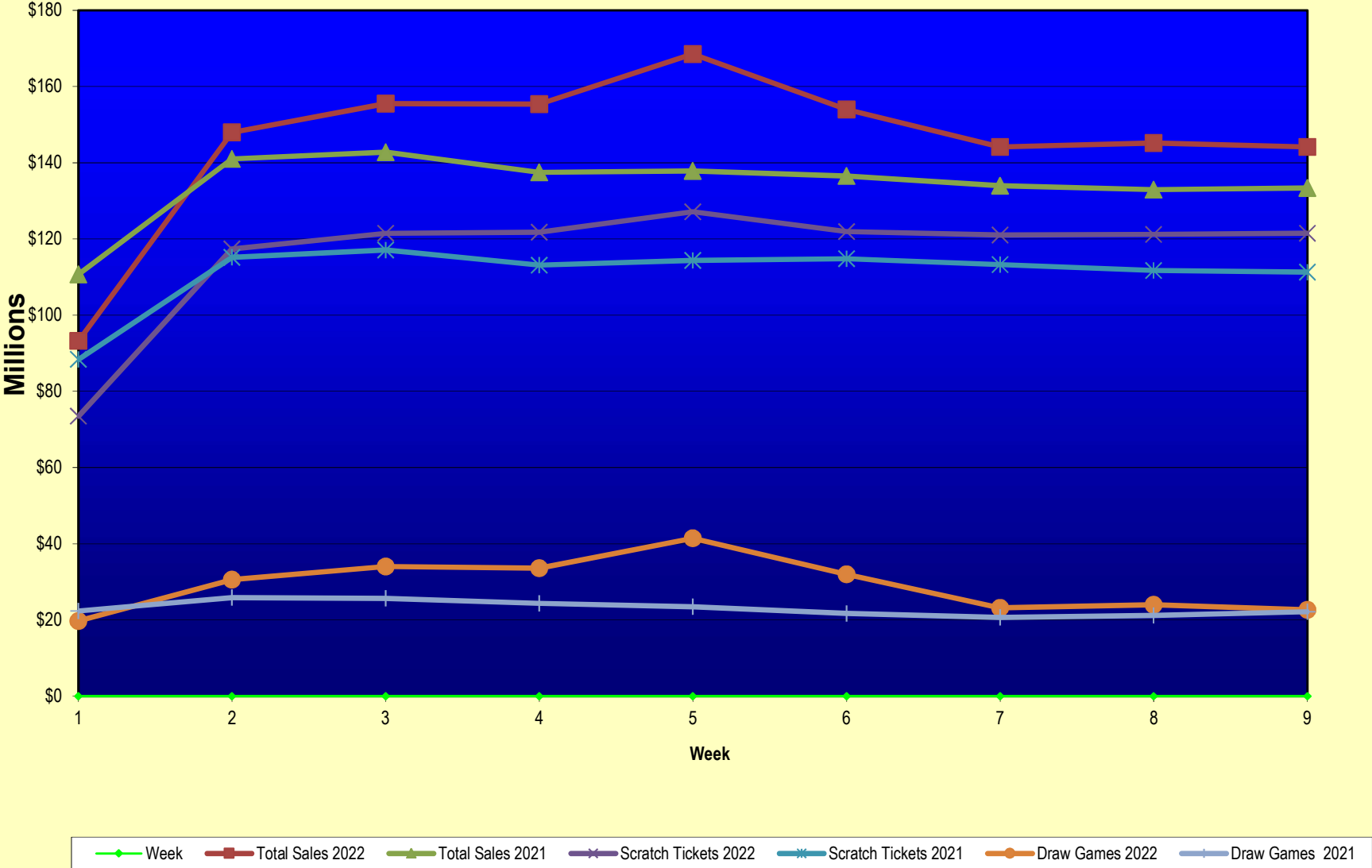
Texas Lottery Commission
Fiscal Year Over Year Change in Sales
Unaudited
FY 2022 Compared to FY 2021

			SCRATCH TICKETS				DRAW GAMES				TOTAL SALES			
FY 2022			FY 2022	FY 2021	Difference	% change - Cumulative Sales	FY 2022	FY 2021	Difference	% change - Cumulative Sales	FY 2022	FY 2021	Difference	% change - Cumulative Sales
Week	Week	Ending												
41	6/11/2022			\$131,984,128				\$21,831,386				\$153,815,514		
42	6/18/2022			\$129,880,069				\$21,982,398				\$151,862,467		
43	6/25/2022			\$128,432,805				\$22,386,397				\$150,819,202		
44	7/2/2022			\$134,775,705				\$23,967,723				\$158,743,428		
45	7/9/2022			\$127,718,775				\$23,105,336				\$150,824,111		
46	7/16/2022			\$127,681,286				\$23,671,929				\$151,353,215		
47	7/23/2022			\$124,610,457				\$24,186,190				\$148,796,647		
48	7/30/2022			\$126,437,509				\$25,623,636				\$152,061,145		
49	8/6/2022			\$125,100,277				\$25,280,445				\$150,380,722		
50	8/13/2022			\$121,350,965				\$25,593,011				\$146,943,976		
51	8/20/2022			\$121,080,932				\$25,800,409				\$146,881,341		
52	8/27/2022			\$118,866,934				\$28,610,926				\$147,477,860		
	8/31/2022**			\$49,085,562				\$10,105,437				\$59,190,999		
Total thru Current Week			\$1,046,960,812	\$999,254,329	\$47,706,483	4.8%	\$261,194,595	\$207,346,889	\$53,847,707	26.0%	\$1,308,155,407	\$1,206,601,218	\$101,554,190	8.4%
Fiscal Year Total			\$1,046,960,812	\$6,616,975,019			\$261,194,595	\$1,490,228,375			\$1,308,155,407	\$8,107,203,394		

* FY 22 includes 4 days; FY 21 includes 5 days

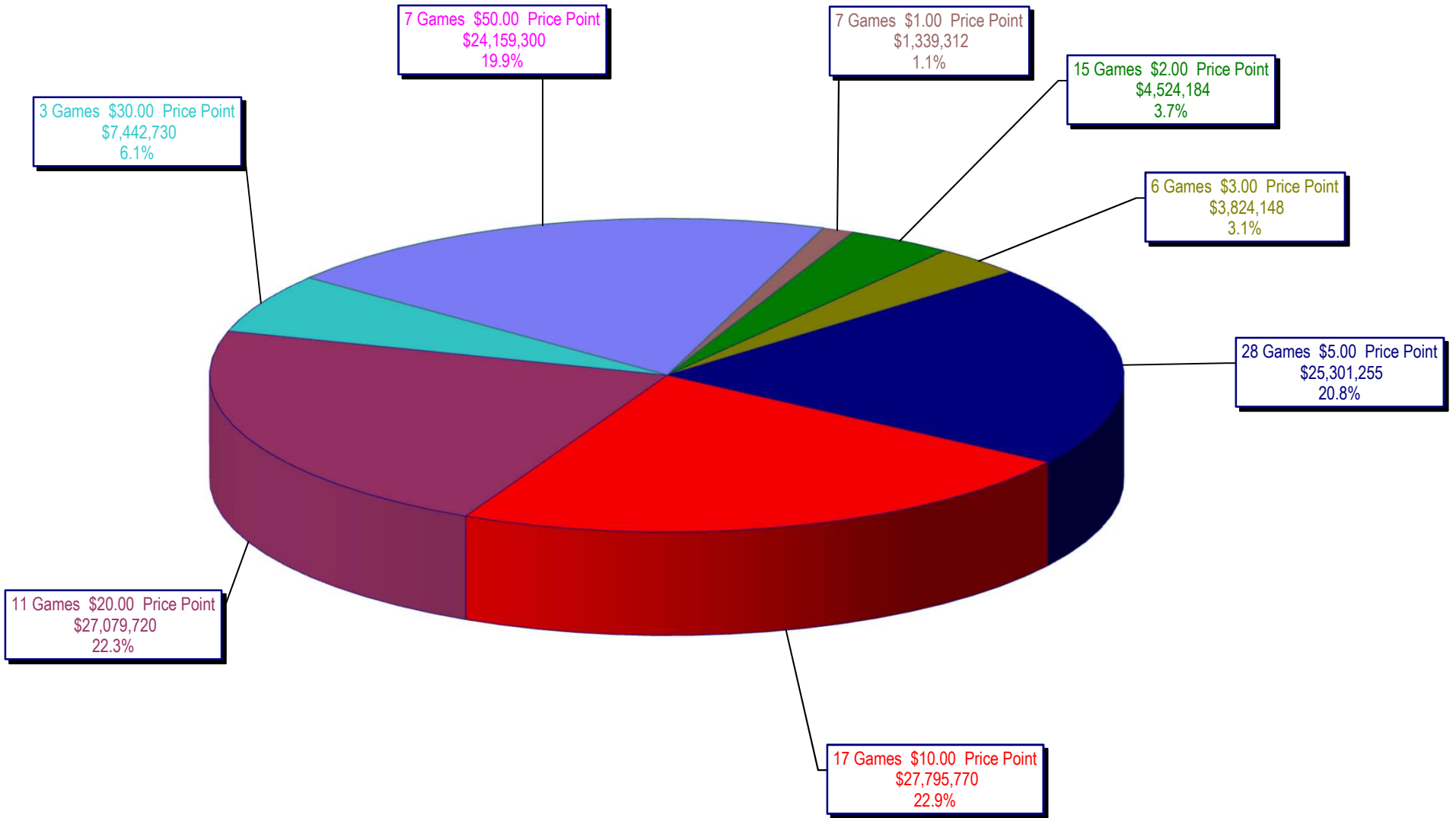
** FY 22 includes 4 days; FY 21 includes 3 days

Texas Lottery Commission Fiscal Year Over Year Change in Sales



Note: Report is prepared on a Fiscal Year basis.

Texas Lottery Commission
Scratch Ticket Sales
For the Week Ending 10/30/2021
(Unaudited)



Texas Lottery Commission
All Game Sales
For the Week Ending 10/30/2021
(Unaudited)

