



*WEEKLY SALES SUMMARY*

Unaudited

**Week Ending: 10/31/2009**

Texas Lottery Commission  
Fiscal Year to Date Sales Comparison  
Unaudited

Through the week ending 10/31/2009 (9 weeks)

Sales by Game	FY 2008 *	FY 2009 **	FY 2010	\$ Change		% Change	
				FY 2010 to FY 2008	FY 2010 to FY 2009 to	FY 2010 to FY 2008	FY 2010 to FY 2009
Instants	\$ 473,966,523	\$ 431,299,754	\$ 447,736,395	\$ -26,230,128	\$ 16,436,641	-5.5%	3.8%
Lotto Texas	37,678,902	30,495,645	56,306,094	18,627,192	25,810,449	49.4%	84.6%
Pick 3	50,168,484	45,039,883	44,556,367	-5,612,117	-483,516	-11.2%	-1.1%
Pick 3 Sum It Up	-	976,291	890,344	890,344	-85,947	-	-8.8%
Cash 5	13,890,798	11,836,728	11,364,676	-2,526,122	-472,052	-18.2%	-4.0%
Texas Two Step	7,841,905	8,022,264	7,293,827	-548,078	-728,437	-7.0%	-9.1%
Mega Millions	23,366,539	21,255,805	33,721,183	10,354,644	12,465,378	44.3%	58.6%
Megaplier	6,073,313	5,636,142	7,517,223	1,443,910	1,881,081	23.8%	33.4%
Daily 4	6,241,305	6,708,397	8,426,852	2,185,548	1,718,456	-	25.6%
Daily 4 Sum It Up	1,894,942	908,915	832,857	-1,062,085	-76,058	-	-8.4%
<b>Total</b>	<b>\$ 621,122,710</b>	<b>\$ 562,179,824</b>	<b>\$ 618,645,818</b>	<b>\$ -2,476,892</b>	<b>\$ 56,465,995</b>	<b>-0.4%</b>	<b>10.0%</b>

\* 3 extra days      \*\* 1 extra day

Texas Lottery Commission  
 Fiscal Year to Date Cumulative Average Sales Comparison  
 Unaudited

Through the week ending 10/31/2009 (9 weeks)

Sales by Game	FY 2008	FY 2009	FY 2010
Instant	\$ 7,405,727	\$ 6,956,448	\$ 7,339,941
Lotto Texas	588,733	491,865	923,051
Pick 3	783,883	726,450	730,432
Pick 3 Sum It Up	-	15,747	14,596
Cash 5	217,044	190,915	186,306
Texas Two Step	122,530	129,391	119,571
Mega Millions	365,102	342,836	552,806
Megaplier	94,896	90,906	123,233
Daily 4	97,520	108,200	138,145
Daily 4 Sum It Up	29,608	14,660	13,653
<b>Total</b>	<b>\$ <u>9,705,042</u></b>	<b>\$ <u>9,067,417</u></b>	<b>\$ <u>10,141,735</u></b>
	thru 11/03/2007 64 days	thru 11/01/2008 62 days	thru 10/31/2009 61 days

Texas Lottery Commission  
Fiscal Year Over Year Change in Sales  
Unaudited  
FY 2010 Compared to FY 2009

Week	FY 2010 Week Ending	INSTANT TICKETS				ON-LINE GAMES				TOTAL SALES			
		FY 2010	FY 2009	Difference	% change - Cumulative Sales	FY 2010	FY 2009	Difference	% change - Cumulative Sales	FY 2010	FY 2009	Difference	% change - Cumulative Sales
1	9/5/2009**	\$40,148,241	\$44,890,104	(\$4,741,863)	-10.6%	\$15,859,194	\$14,722,011	\$1,137,184	7.7%	\$56,007,435	\$59,612,115	(\$3,604,680)	-6.0%
2	9/12/2009	\$49,896,100	\$46,309,551	\$3,586,549	7.7%	\$18,206,315	\$13,704,860	\$4,501,455	32.8%	\$68,102,415	\$60,014,411	\$8,088,004	13.5%
3	9/19/2009	\$50,971,937	\$42,923,171	\$8,048,766	18.8%	\$18,859,622	\$12,291,263	\$6,568,359	53.4%	\$69,831,559	\$55,214,434	\$14,617,125	26.5%
4	9/26/2009	\$49,975,243	\$47,042,801	\$2,932,442	6.2%	\$19,345,435	\$14,222,339	\$5,123,096	36.0%	\$69,320,678	\$61,265,140	\$8,055,538	13.1%
5	10/3/2009	\$52,283,569	\$50,747,162	\$1,536,407	3.0%	\$20,991,695	\$15,784,472	\$5,207,223	33.0%	\$73,275,264	\$66,531,634	\$6,743,630	10.1%
6	10/10/2009	\$52,238,261	\$49,763,789	\$2,474,472	5.0%	\$21,547,439	\$15,622,498	\$5,924,941	37.9%	\$73,785,700	\$65,386,287	\$8,399,413	12.8%
7	10/17/2009	\$50,806,599	\$49,299,053	\$1,507,546	3.1%	\$23,114,594	\$15,167,940	\$7,946,654	52.4%	\$73,921,193	\$64,466,993	\$9,454,200	14.7%
8	10/24/2009	\$50,731,592	\$49,977,581	\$754,011	1.5%	\$17,274,411	\$14,525,843	\$2,748,568	18.9%	\$68,006,003	\$64,503,424	\$3,502,579	5.4%
9	10/31/2009	\$50,684,853	\$50,346,542	\$338,311	0.7%	\$15,710,720	\$14,838,845	\$871,876	5.9%	\$66,395,573	\$65,185,387	\$1,210,187	1.9%
10	11/7/2009		\$54,860,087				\$16,057,069				\$70,917,156		
11	11/14/2009		\$53,484,812				\$15,829,819				\$69,314,631		
12	11/21/2009		\$52,806,511				\$16,460,748				\$69,267,259		
13	11/28/2009		\$52,199,741				\$17,397,576				\$69,597,317		
14	12/5/2009		\$56,731,851				\$20,363,789				\$77,095,640		
15	12/12/2009		\$54,109,617				\$22,952,228				\$77,061,845		
16	12/19/2009		\$55,777,328				\$15,833,517				\$71,610,845		
17	12/26/2009		\$57,597,885				\$15,851,771				\$73,449,656		
18	1/2/2010		\$57,582,115				\$16,900,028				\$74,482,143		
19	1/9/2010		\$54,250,945				\$16,203,220				\$70,454,165		
20	1/16/2010		\$51,625,339				\$15,701,605				\$67,326,944		
21	1/23/2010		\$52,789,573				\$15,897,473				\$68,687,046		
22	1/30/2010		\$55,453,471				\$16,908,272				\$72,361,743		
23	2/6/2010		\$62,247,711				\$18,354,314				\$80,602,025		
24	2/13/2010		\$60,509,056				\$19,218,078				\$79,727,134		
25	2/20/2010		\$59,194,623				\$21,098,199				\$80,292,822		
26	2/27/2010		\$58,857,216				\$24,116,924				\$82,974,140		
27	3/6/2010		\$59,552,257				\$23,995,136				\$83,547,393		
28	3/13/2010		\$53,754,084				\$18,769,831				\$72,523,915		
29	3/20/2010		\$52,581,107				\$15,903,038				\$68,484,145		
30	3/27/2010		\$52,560,961				\$16,094,933				\$68,655,894		
31	4/3/2010		\$56,249,759				\$17,357,002				\$73,606,761		
32	4/10/2010		\$54,440,987				\$17,660,600				\$72,101,587		
33	4/17/2010		\$52,755,834				\$18,469,585				\$71,225,419		
34	4/24/2010		\$51,450,968				\$20,216,898				\$71,667,866		
35	5/1/2010		\$52,327,090				\$23,520,573				\$75,847,663		
36	5/8/2010		\$53,214,412				\$16,241,207				\$69,455,619		
37	5/15/2010		\$50,785,227				\$15,990,544				\$66,775,771		
38	5/22/2010		\$56,567,077				\$15,874,447				\$72,441,524		
39	5/29/2010		\$55,359,239				\$16,040,196				\$71,399,435		
40	6/5/2010		\$60,250,125				\$16,301,599				\$76,551,724		

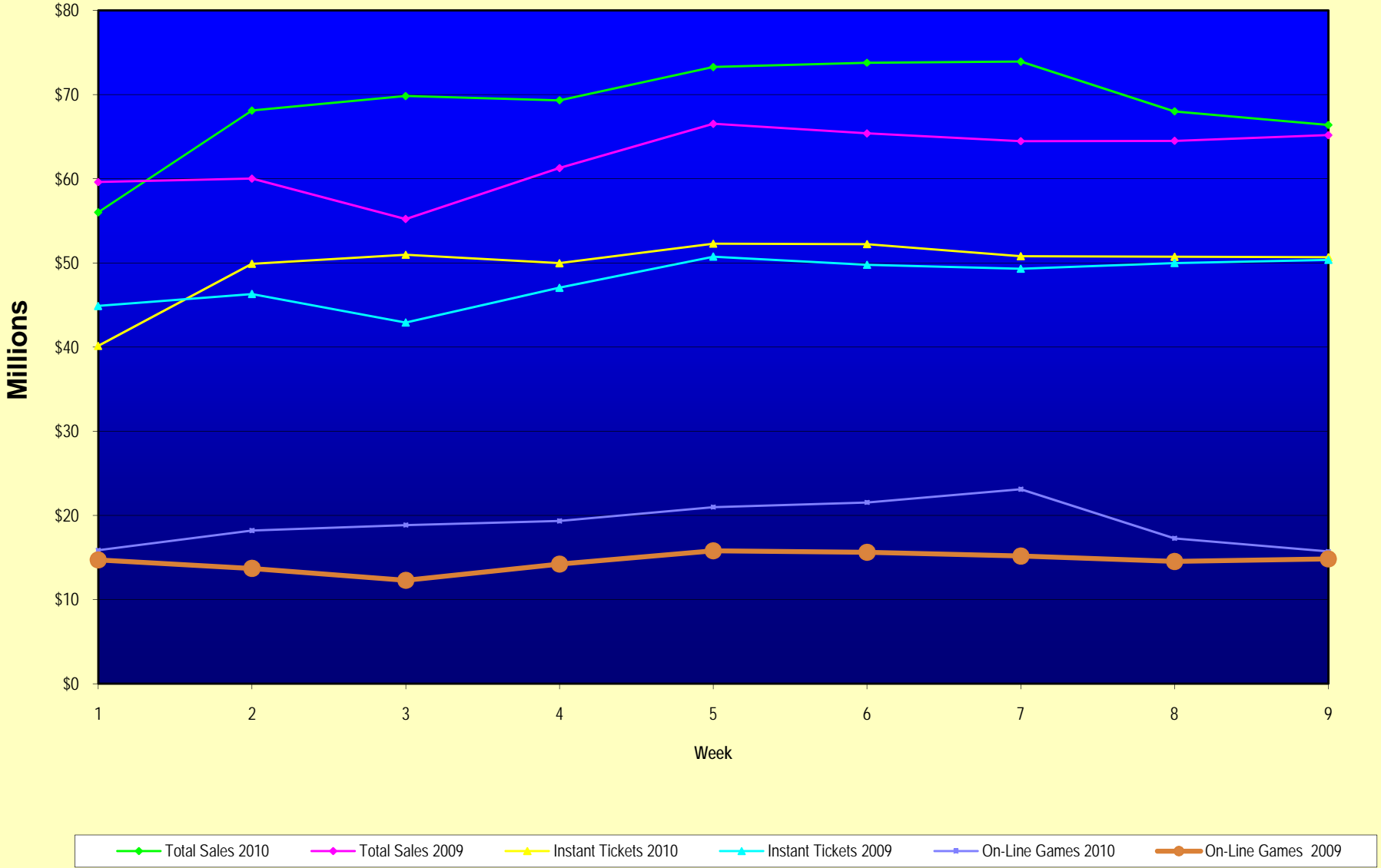
Note: Week 1 is not a full week of sales as this report is prepared on a Fiscal Year basis.

Texas Lottery Commission  
Fiscal Year Over Year Change in Sales  
Unaudited  
FY 2010 Compared to FY 2009

Week	FY 2010 Week Ending	INSTANT TICKETS				ON-LINE GAMES				TOTAL SALES			
		FY 2010	FY 2009	Difference	% change - Cumulative Sales	FY 2010	FY 2009	Difference	% change - Cumulative Sales	FY 2010	FY 2009	Difference	% change - Cumulative Sales
41	6/12/2010		\$54,979,517				\$16,143,215				\$71,122,732		
42	6/19/2010		\$53,109,433				\$16,357,924				\$69,467,357		
43	6/26/2010		\$53,431,083				\$16,786,203				\$70,217,286		
44	7/3/2010		\$55,518,615				\$18,292,421				\$73,811,036		
45	7/10/2010		\$53,004,390				\$17,842,530				\$70,846,920		
46	7/17/2010		\$52,498,940				\$16,138,341				\$68,637,281		
47	7/24/2010		\$51,550,731				\$16,748,137				\$68,298,868		
48	7/31/2010		\$51,893,977				\$18,065,180				\$69,959,157		
49	8/7/2010		\$54,506,395				\$19,258,117				\$73,764,512		
50	8/14/2010		\$51,766,530				\$20,828,293				\$72,594,823		
51	8/21/2010		\$51,909,040				\$24,913,396				\$76,822,436		
52	8/28/2010		\$50,848,517				\$35,661,563				\$86,510,080		
53			\$13,288,367				\$3,085,816				\$16,374,183		
Total thru Current Week		\$447,736,395	\$431,299,754	\$16,436,641	3.8%	\$170,909,423	\$130,880,070	\$40,029,354	30.6%	\$618,645,818	\$562,179,824	\$56,465,995	10.0%
Fiscal Year Total		\$447,736,395	\$2,791,532,297			\$170,909,423	\$928,581,414			\$618,645,818	\$3,720,113,711		

\*\* FY 2010 includes 5 days; FY 2009 includes 6 days

### Texas Lottery Commission Fiscal Year Over Year Change in Sales



Note: Week 1 is not a full week of sales as this report is prepared on a Fiscal Year basis.

Texas Lottery Commission  
Instant Tickets by Price Point  
Sales, Prize Expense, Sales Contribution and Payout Percentage With Year Over Year Changes  
Unaudited

Fiscal Year	Price Point	# of Active Games	FY Sales	% of Instant Ticket Sales	Year over Year Change in Sales	FY Prize Expense	Year over Year Change in Prize Expense	FY Sales Contribution	Year over Year Change in Contribution	Average Prize Payout %	Year over Year Change in Payout %
2009	\$1.00	20	36,153,675	8.4%		21,810,036		\$14,343,639		60.3%	0.4%
thru	\$2.00	20	77,134,466	17.9%		50,022,996		\$27,111,470		64.9%	-0.7%
11/1/2008	\$3.00	10	48,523,455	11.3%		31,874,639		\$16,648,816		65.7%	0.0%
	\$5.00	25	130,866,469	30.3%		89,009,826		\$41,856,643		68.0%	0.1%
	\$7.00	5	13,175,064	3.1%		8,964,802		\$4,210,262		68.0%	0.1%
	\$10.00	12	55,190,980	12.8%		38,628,273		\$16,562,707		70.0%	0.0%
	\$20.00	7	43,876,860	10.2%		31,490,130		\$12,386,730		71.8%	0.0%
	\$25.00	1	2,244,325	0.5%		1,632,160		\$612,165		72.7%	0.2%
	\$30.00	2	4,222,710	1.0%		3,061,020		\$1,161,690		72.5%	0.1%
	\$50.00	3	19,911,750	4.6%		14,403,246		\$5,508,504		72.3%	0.2%
<b>Total</b>		<b>105</b>	<b>\$431,299,754</b>			<b>\$290,897,128</b>		<b>\$140,402,626</b>		<b>67.4%</b>	<b>-0.3%</b>
2010	\$1.00	25	37,944,547	8.5%		22,823,700		15,120,847		60.2%	0.1%
thru	\$2.00	29	65,224,226	14.6%		43,802,078		21,422,148		67.2%	3.1%
10/31/2009	\$3.00	14	56,478,546	12.6%		37,114,741		19,363,805		65.7%	0.2%
	\$5.00	29	123,655,583	27.6%		83,942,728		39,712,855		67.9%	-0.2%
	\$7.00	4	15,758,393	3.5%		10,714,557		5,043,836		68.0%	0.0%
	\$10.00	12	65,811,300	14.7%		46,029,548		19,781,752		69.9%	0.0%
	\$20.00	5	69,922,900	15.6%		52,168,083		17,754,817		74.6%	2.0%
	\$25.00	0	-	0.0%		-		-		0.0%	-100.0%
	\$30.00	0	-	0.0%		-		-		0.0%	-100.0%
	\$50.00	2	12,940,900	2.9%		10,024,956		2,915,944		77.5%	3.9%
<b>Total</b>		<b>120</b>	<b>\$447,736,395</b>			<b>\$306,620,390</b>		<b>\$141,116,005</b>		<b>68.5%</b>	<b>1.1%</b>
Variance	\$1.00	5	1,790,872		5.0%	1,013,664	4.6%	777,208	5.4%	-0.18%	
2010 to	\$2.00	9	-11,910,240		-15.4%	-6,220,917	-12.4%	-5,689,323	-21.0%	2.30%	
2009	\$3.00	4	7,955,091		16.4%	5,240,101	16.4%	2,714,990	16.3%	0.03%	
	\$5.00	4	-7,210,886		-5.5%	-5,067,098	-5.7%	-2,143,788	-5.1%	-0.13%	
	\$7.00	-1	2,583,329		19.6%	1,749,755	19.5%	833,574	19.8%	-0.05%	
	\$10.00	0	10,620,320		19.2%	7,401,276	19.2%	3,219,044	19.4%	-0.05%	
	\$20.00	-2	26,046,040		59.4%	20,677,953	65.7%	5,368,087	43.3%	2.84%	
	\$25.00	-1	-2,244,325		-100.0%	-1,632,160	-100.0%	-612,165	-100.0%	-72.72%	
	\$30.00	-2	-4,222,710		-100.0%	-3,061,020	-100.0%	-1,161,690	-100.0%	-72.49%	
	\$50.00	-1	-6,970,850		-35.0%	-4,378,290	-30.4%	-2,592,560	-47.1%	5.13%	
<b>Total</b>		<b>15</b>	<b>\$16,436,641</b>		<b>3.8%</b>	<b>\$15,723,262</b>	<b>5.4%</b>	<b>\$713,379</b>	<b>0.5%</b>	<b>1.04%</b>	

Texas Lottery Commission  
**Instant Tickets by Price Point**  
**Sales, Prize Expense, Sales Contribution and Payout Percentage With Year Over Year Changes**  
 Unaudited

Notes - Instant Ticket Variances

		FY 2010		FY 2009		Difference
Sales	\$1 - \$7		\$299,061,295		\$305,853,129	-\$6,791,834
Prize Exp.	\$1 - \$7		\$198,397,803		\$201,682,299	-\$3,284,496
Sales Cont.	\$1 - \$7		\$100,663,492		\$104,170,830	-\$3,507,338
Prize Exp. %	\$1 - \$7		66.3%		65.9%	0.4%
		FY 2010		FY 2009		Difference
Sales	\$10 - \$50		\$148,675,100		\$125,446,625	\$23,228,475
Prize Exp.	\$10 - \$50		\$108,222,587		\$89,214,829	\$19,007,758
Sales Cont.	\$10 - \$50		\$40,452,513		\$36,231,796	\$4,220,717
Prize Exp. %	\$10 - \$50		72.8%		71.1%	1.7%
		FY 2010		FY 2009		Difference
Sales	Instant		\$447,736,395		\$431,299,754	\$16,436,641
Prize Exp.	Instant		\$306,620,390		\$290,897,128	\$15,723,262
Sales Cont.	Instant		\$141,116,005		\$140,402,626	\$713,379
Prize Exp. %	Instant		68.5%		67.4%	1.0%

		FY 2010		FY 2009		Difference
Sales	\$1 - \$10		\$364,872,595		\$361,044,109	\$3,828,486
Prize Exp.	\$1 - \$10		\$244,427,352		\$240,310,572	\$4,116,780
Sales Cont.	\$1 - \$10		\$120,445,243		\$120,733,537	-\$288,294
Prize Exp. %	\$1 - \$10		67.0%		66.6%	0.4%
		FY 2010		FY 2009		Difference
Sales	\$20 - \$50		\$82,863,800		\$70,255,645	\$12,608,155
Prize Exp.	\$20 - \$50		\$62,193,039		\$50,586,556	\$11,606,483
Sales Cont.	\$20 - \$50		\$20,670,761		\$19,669,089	\$1,001,672
Prize Exp. %	\$20 - \$50		75.1%		72.0%	3.1%
		FY 2010		FY 2009		Difference
Sales	Instant		\$447,736,395		\$431,299,754	\$16,436,641
Prize Exp.	Instant		\$306,620,390		\$290,897,128	\$15,723,262
Sales Cont.	Instant		\$141,116,005		\$140,402,626	\$713,379
Prize Exp. %	Instant		68.5%		67.4%	1.0%



Texas Lottery Commission  
 Weekly Sales Summary  
 & Comparison to Previous Week  
 Unaudited

	Week Ending 10/31/2009		Week Ending 10/24/2009			
	<u>THIS WEEK</u>	% of Sales	<u>LAST WEEK</u>	% of Sales	<u>\$ change</u>	<u>% change</u>
Total Sales	<u>\$66,395,573</u>		<u>\$68,006,003</u>		<u>-\$1,610,430</u>	-2.37%
Instant Tickets	<u>\$50,684,853</u>	76.3%	<u>\$50,731,592</u>	74.6%	<u>-\$46,739</u>	-0.09%
Lotto Texas	\$3,749,006	5.6%	\$5,785,292	8.5%	-\$2,036,286	-35.20%
Pick 3	\$4,944,409	7.4%	\$4,845,815	7.1%	\$98,594	2.03%
Pick 3 Sum It Up	\$98,543	0.1%	\$93,256	0.1%	\$5,287	5.67%
Cash 5	\$1,289,523	1.9%	\$1,282,033	1.9%	\$7,490	0.58%
Texas Two Step	\$815,750	1.2%	\$806,971	1.2%	\$8,779	1.09%
Mega Millions	\$2,988,991	4.5%	\$2,776,628	4.1%	\$212,363	7.65%
Megaplier	\$717,574	1.1%	\$663,491	1.0%	\$54,083	8.15%
Daily 4	\$1,006,435	1.5%	\$931,641	1.4%	\$74,794	8.03%
Daily 4 Sum It Up	<u>\$100,490</u>	0.2%	<u>\$89,284</u>	0.1%	<u>\$11,206</u>	12.55%
Total Online Sales	<u>\$15,710,720</u>		<u>\$17,274,411</u>		<u>-\$1,563,691</u>	-9.05%

\* Totals may not sum due to rounding.

Texas Lottery Commission  
Weekly Sales Summary  
Unaudited

INSTANT TICKETS  
TOP TEN SELLING GAMES

For the Week Ending : 10/31/2009

Rank	Price Point	Game	Sales (Millions)
1	\$ 20	\$500,000,000 BLOCKBUSTER	\$ 4.570
2	\$ 5	WINTER WINNINGS	\$ 3.214
3	\$ 20	MERRY MILLIONAIRE	\$ 3.113
4	\$ 10	BIG PAYOUT	\$ 2.125
5	\$ 10	JINGLE JUMBO BUCKS	\$ 2.123
6	\$ 5	SUPER WILD 8'S	\$ 1.796
7	\$ 3	BONUS WORD CASHWORD	\$ 1.759
8	\$ 5	DALLAS COWBOYS	\$ 1.700
9	\$ 3	BONUS CASHWORD	\$ 1.610
10	\$ 2	SNOW DOUGH	\$ 1.428

Texas Lottery Commission  
Prize Payout Tracking Report  
Unaudited

Through Week Ending 10/31/2009

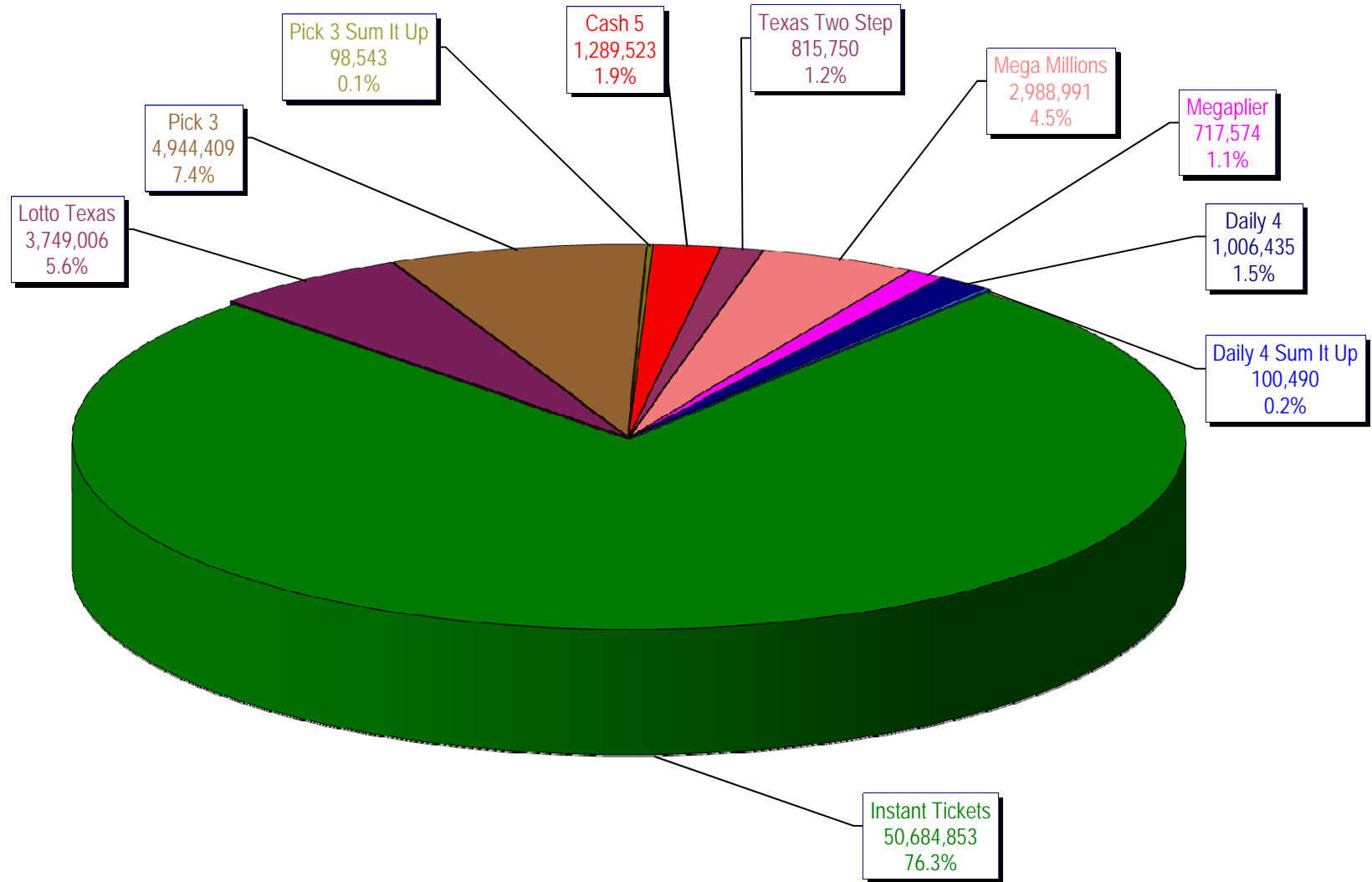
On-Line Sales

		FY Sales Through Week Ending 10/31/2009		FY Prize Expense Through Week Ending 10/31/2009	Actual* Prize Payout	Base Payout (Prize Pool)
Lotto	\$	56,306,094	\$	28,171,655	50.03%	50.00%
Pick 3		44,556,367		20,888,560	46.88%	50.00%
Pick 3 Sum It Up		890,344		401,577	45.10%	50.00%
Cash 5		11,364,676		5,683,645	50.01%	50.00%
Texas Two-Step		7,293,827		3,908,501	53.59%	50.00%
Mega Millions		33,721,183		17,120,683	50.77%	50.00%**
Megaplier		7,517,223		2,424,840	32.26%	N/A
Daily 4		8,426,852		4,633,375	54.98%	50.00%
Daily 4-Sum It Up		832,857		443,415	53.24%	50.00%
<b>Totals</b>	\$	<b>170,909,423</b>	\$	<b>83,676,250</b>	<b>48.96%</b>	

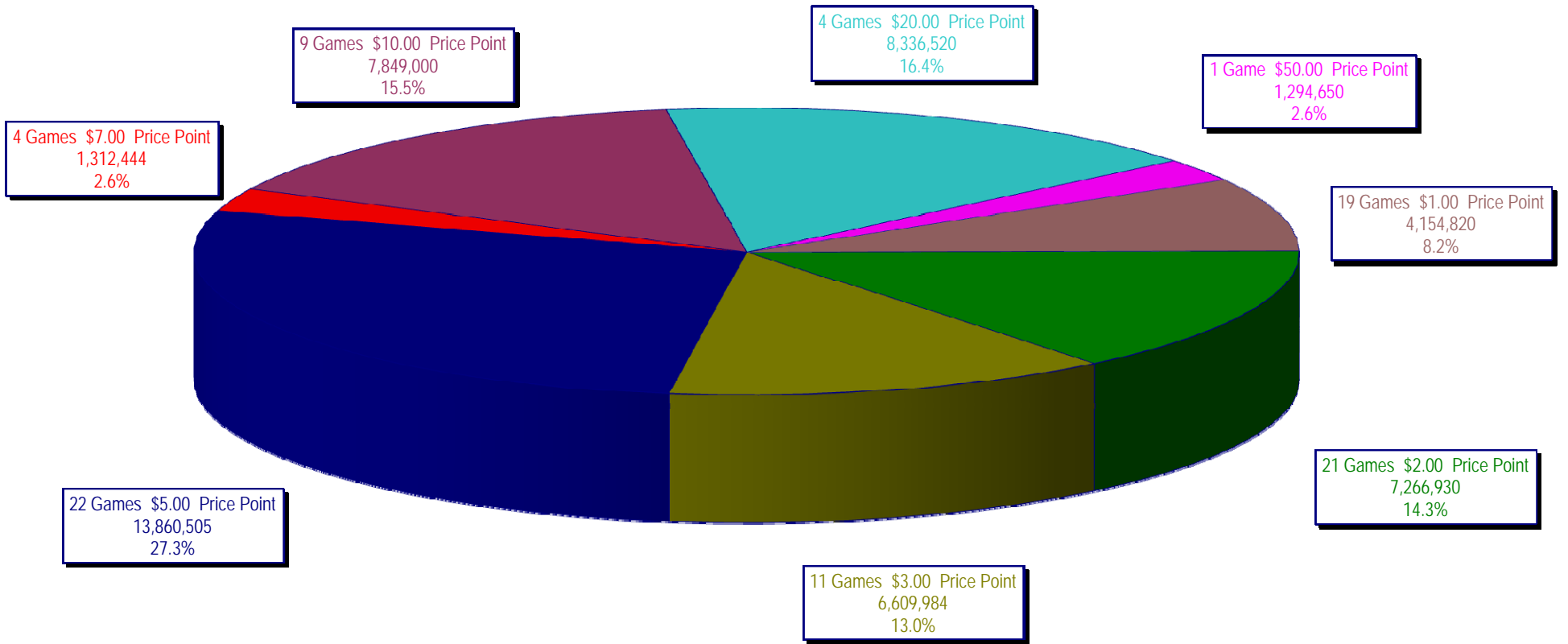
\* Before Unclaimed Prizes

\*\* Estimated; depends on # of guaranteed prizes won in Texas

Texas Lottery Commission  
**All Game Sales**  
For the Week Ending 10/31/2009  
(Unaudited)



Texas Lottery Commission  
Instant Ticket Sales  
For the Week Ending 10/31/2009  
(Unaudited)



Texas Lottery Commission - Weekly Sales Summary for FY 2010 (Unaudited)

Week Ended	Instant Games	New Games & Dates	Lotto Texas	Jackpot W S	Pick 3	Pick 3 Sum It Up	Cash 5	Texas Two Step	Jackpot M TH	Mega Millions	Jackpot T F	Megaplier	Daily 4	Daily 4 Sum It Up	Total	Per Cap.
9/5/2009	53,436,608.00	1183 (\$2,N) - 08/31/09	6,294,287.00	45 47	5,276,229.00	104,886.00	1,338,093.00	1,212,330.00	1.2 200	2,959,401.00	12 12	708,622.00	955,411.00	95,751.00	72,381,618.00	2.98
9/12/2009	49,896,100.00	1200 (\$1,N); 1201 (\$10,N) - 09/07/09	6,426,945.00	49 51	5,109,927.50	104,641.00	1,278,982.00	771,782.00	225 200	2,811,431.00	18 28	693,407.00	918,268.00	90,931.50	68,102,415.00	2.80
9/19/2009	50,971,937.00	1202 (\$3,N); 1185 (\$5,N) - 09/14/09	6,496,645.00	53 55	5,176,010.00	103,700.00	1,295,302.00	803,124.00	200 225	3,164,844.00	38 51	760,088.00	965,671.50	94,237.00	69,831,558.50	2.87
9/26/2009	49,975,243.00	1141 (\$1, N); 1259 (\$3,N) - 09/21/09	6,765,369.00	57 59	4,894,237.50	98,171.00	1,271,129.00	915,249.00	275 400	3,568,088.00	62 75	822,408.00	918,596.00	92,187.50	69,320,678.00	2.85
10/3/2009	52,283,569.00	1203 (\$2,N); 1172 (\$5,N) - 09/28/09	7,003,107.00	61 63	5,156,873.00	102,841.50	1,315,863.00	1,111,913.00	525 650	4,270,019.00	88 105	939,935.00	993,158.50	97,984.50	73,275,263.50	3.01
10/10/2009	52,238,261.00	1205 (\$1,N); 1263 (\$3,N) - 10/05/09	7,061,948.00	64 67	5,050,571.00	102,586.50	1,300,852.00	811,464.00	200 225	5,100,350.00	122 145	1,050,507.00	971,147.50	98,012.50	73,785,699.50	3.03
10/17/2009	50,806,599.00	1187 (\$2,N); 1193 (\$20,N) - 10/12/09	7,262,683.00	70 73	4,990,457.00	99,389.50	1,276,305.00	769,253.00	200 200	6,449,660.00	170 200	1,245,391.00	931,084.00	90,371.00	73,921,192.50	3.04
10/24/2009	50,731,592.00	1188 (\$3,N); 1189 (\$5,N) - 10/19/09	5,785,292.00	76 4	4,845,815.00	93,256.00	1,282,033.00	806,971.00	225 275	2,776,628.00	12 18	663,491.00	931,641.00	89,284.00	68,006,003.00	2.80
10/31/2009	50,684,853.00	1192 (\$10,N); 1186 (\$1,N) - 10/26/09	3,749,006.00	5 6	4,944,409.00	98,542.50	1,289,523.00	815,750.00	375 200	2,988,991.00	28 40	717,574.00	1,006,435.00	100,489.50	66,395,573.00	2.73
weekly change	-0.09%		-35.20%		2.03%	5.67%	0.58%	1.09%		7.65%		8.15%	8.03%	12.55%		-2.37%
	<b>SALES</b>		<b>SALES</b>		<b>SALES</b>	<b>SALES</b>	<b>SALES</b>	<b>SALES</b>		<b>SALES</b>		<b>SALES</b>	<b>SALES</b>	<b>SALES</b>	<b>SALES</b>	<b>% of Sales</b>
Startup to date	36,719,854,694.00		10,535,919,641.00		3,628,154,124.50	13,291,419.50	2,201,268,816.00	485,081,758.00		1,175,251,782.45		273,085,510.00	97,477,063.00	14,586,684.00	55,352,105,464.45	100.0%
Calendar Year to date	2,337,951,019.00		196,550,349.00		236,994,625.50	175,670.50	58,530,362.00	43,922,621.00		191,294,878.95		41,217,695.00	41,269,404.50	4,445,876.50	3,152,352,501.95	100.0%
Fiscal Year to date 2	447,736,395.00		56,306,094.00		44,556,367.00	890,344.00	11,364,676.00	7,293,827.00		33,721,183.00		7,517,223.00	8,426,852.00	832,857.00	618,645,818.00	100.0%