



WEEKLY SALES SUMMARY

Unaudited

Week Ending: 11/07/2009

Texas Lottery Commission
Fiscal Year to Date Sales Comparison
Unaudited

Through the week ending 11/07/2009 (10 weeks)

Sales by Game	FY 2008 *	FY 2009 **	FY 2010	\$ Change		% Change	
				FY 2010 to FY 2008	FY 2010 to FY 2009 to	FY 2010 to FY 2008	FY 2010 to FY 2009
Instants	\$ 527,601,613	\$ 486,159,841	\$ 502,370,323	\$ -25,231,290	\$ 16,210,482	-4.8%	3.3%
Lotto Texas	41,859,943	33,786,062	60,288,413	18,428,470	26,502,351	44.0%	78.4%
Pick 3	55,541,299	50,726,584	49,821,388	-5,719,912	-905,197	-10.3%	-1.8%
Pick 3 Sum It Up	-	1,094,786	995,525	995,525	-99,262	-	-9.1%
Cash 5	15,356,193	13,234,713	12,703,891	-2,652,302	-530,822	-17.3%	-4.0%
Texas Two Step	8,605,236	9,180,365	8,146,967	-458,269	-1,033,398	-5.3%	-11.3%
Mega Millions	25,565,857	23,985,108	37,179,586	11,613,729	13,194,479	45.4%	55.0%
Megaplier	6,663,078	6,328,804	8,312,268	1,649,190	1,983,464	24.8%	31.3%
Daily 4	7,282,297	7,579,627	9,485,416	2,203,119	1,905,790	-	25.1%
Daily 4 Sum It Up	2,195,075	1,021,091	937,581	-1,257,494	-83,510	-	-8.2%
Total	\$ 690,670,591	\$ 633,096,980	\$ 690,241,357	\$ -429,234	\$ 57,144,378	-0.1%	9.0%

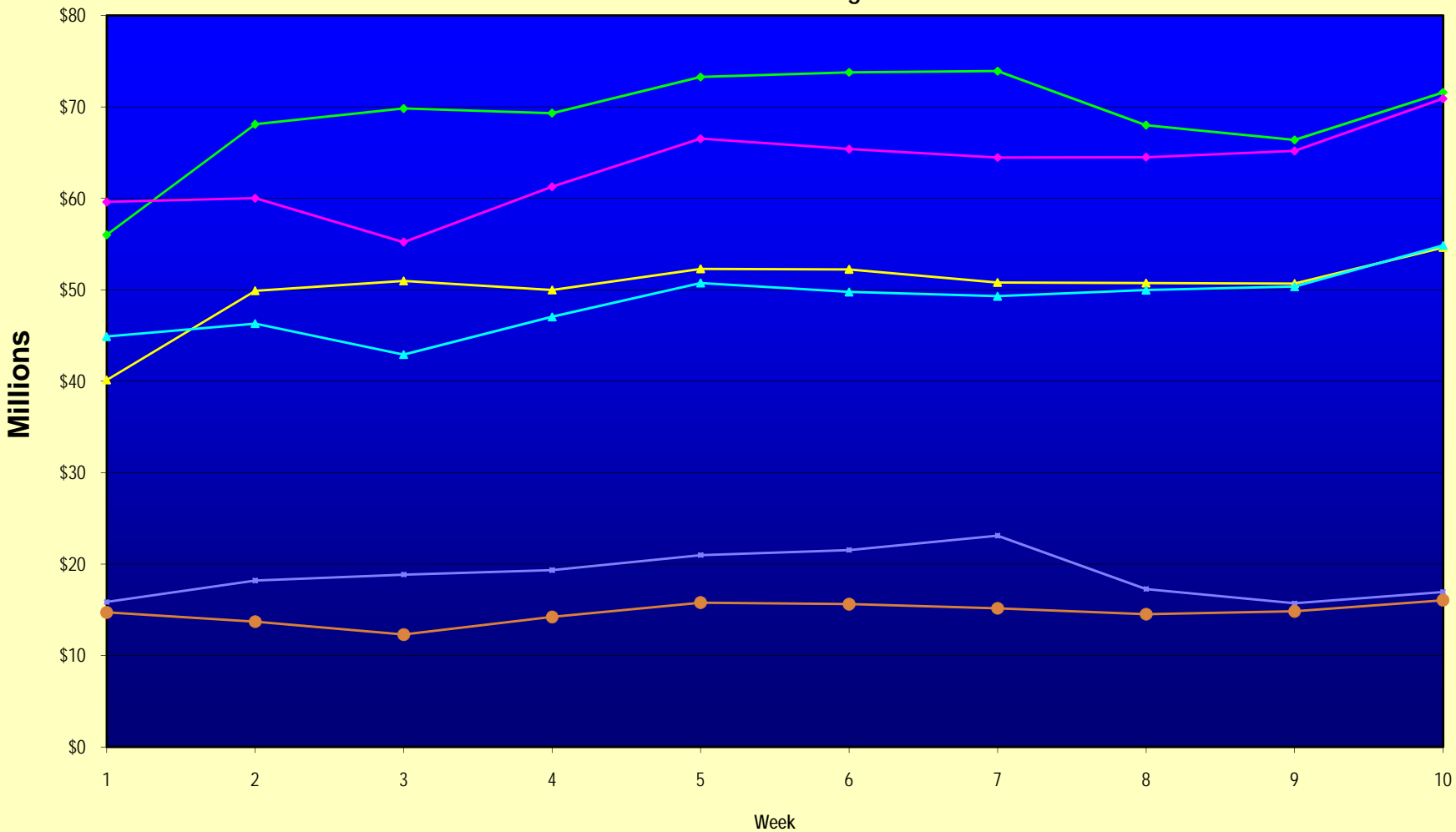
* 3 extra days ** 1 extra day

Texas Lottery Commission
Fiscal Year to Date Cumulative Average Sales Comparison
Unaudited

Through the week ending 11/07/2009 (10 weeks)

Sales by Game	FY 2008	FY 2009	FY 2010
Instant	\$ 7,431,009	\$ 7,045,795	\$ 7,387,799
Lotto Texas	589,577	489,653	886,594
Pick 3	782,272	735,168	732,667
Pick 3 Sum It Up	-	15,866	14,640
Cash 5	216,284	191,807	186,822
Texas Two Step	121,201	133,049	119,808
Mega Millions	360,082	347,610	546,759
Megaplier	93,846	91,722	122,239
Daily 4	102,568	109,850	139,491
Daily 4 Sum It Up	30,917	14,798	13,788
Total	\$ <u>9,727,755</u>	\$ <u>9,175,319</u>	\$ <u>10,150,608</u>
	thru 11/10/2007 71 days	thru 11/08/2008 69 days	thru 11/07/2009 68 days

Texas Lottery Commission Fiscal Year Over Year Change in Sales



Note: Week 1 is not a full week of sales as this report is prepared on a Fiscal Year basis.

Texas Lottery Commission
Instant Tickets by Price Point
Sales, Prize Expense, Sales Contribution and Payout Percentage With Year Over Year Changes
Unaudited

Fiscal Year	Price Point	# of Active Games	FY Sales	% of Instant Ticket Sales	Year over Year Change in Sales	FY Prize Expense	Year over Year Change in Prize Expense	FY Sales Contribution	Year over Year Change in Contribution	Average Prize Payout %	Year over Year Change in Payout %
2009	\$1.00	28	40,621,780	8.4%		25,721,189		14,900,591		63.3%	5.4%
thru	\$2.00	25	86,869,926	17.9%		56,342,433		30,527,493		64.9%	-0.6%
11/8/2008	\$3.00	13	54,843,330	11.3%		36,031,990		18,811,340		65.7%	0.0%
	\$5.00	27	145,575,344	29.9%		99,014,946		46,560,398		68.0%	0.1%
	\$7.00	6	16,346,841	3.4%		11,122,254		5,224,587		68.0%	0.1%
	\$10.00	12	63,682,250	13.1%		44,573,022		19,109,228		70.0%	0.0%
	\$20.00	7	49,220,220	10.1%		35,326,368		13,893,852		71.8%	0.0%
	\$25.00	1	2,318,350	0.5%		1,686,321		632,029		72.7%	0.2%
	\$30.00	3	4,696,350	1.0%		3,404,657		1,291,693		72.5%	0.1%
	\$50.00	3	21,985,450	4.5%		15,902,864		6,082,586		72.3%	0.2%
Total		125	\$486,159,841			\$329,126,046		\$157,033,795		67.7%	0.0%
2010	\$1.00	25	42,731,431	8.5%		25,696,644		17,034,787		60.1%	0.1%
thru	\$2.00	28	72,695,320	14.5%		48,665,925		24,029,395		66.9%	2.8%
11/7/2009	\$3.00	14	63,526,845	12.6%		41,751,306		21,775,539		65.7%	0.2%
	\$5.00	29	137,504,623	27.4%		93,349,909		44,154,714		67.9%	-0.2%
	\$7.00	5	18,733,414	3.7%		12,737,342		5,996,072		68.0%	0.0%
	\$10.00	12	74,544,300	14.8%		52,139,751		22,404,549		69.9%	0.0%
	\$20.00	5	78,322,240	15.6%		58,439,154		19,883,086		74.6%	2.0%
	\$25.00	0	-	0.0%		-		-		0.0%	-100.0%
	\$30.00	0	-	0.0%		-		-		0.0%	-100.0%
	\$50.00	2	14,312,150	2.8%		11,086,946		3,225,204		77.5%	3.9%
Total		120	\$502,370,323			\$343,866,976		\$158,503,347		68.4%	1.0%
Variance	\$1.00	-3	2,109,651		5.2%	-24,545	-0.1%	2,134,196	14.3%	-3.16%	
2010 to	\$2.00	3	-14,174,606		-16.3%	-7,676,508	-13.6%	-6,498,098	-21.3%	2.05%	
2009	\$3.00	1	8,683,515		15.8%	5,719,316	15.9%	2,964,199	15.8%	0.02%	
	\$5.00	2	-8,070,721		-5.5%	-5,665,037	-5.7%	-2,405,684	-5.2%	-0.11%	
	\$7.00	-1	2,386,573		14.6%	1,615,088	14.5%	771,485	14.8%	-0.01%	
	\$10.00	0	10,862,050		17.1%	7,566,729	17.0%	3,295,321	17.2%	-0.06%	
	\$20.00	-2	29,102,020		59.1%	23,112,786	65.4%	5,989,234	43.1%	2.81%	
	\$25.00	-1	-2,318,350		-100.0%	-1,686,321	-100.0%	-632,029	-100.0%	-72.70%	
	\$30.00	-3	-4,696,350		-100.0%	-3,404,657	-100.0%	-1,291,693	-100.0%	-72.50%	
	\$50.00	-1	-7,673,300		-34.9%	-4,815,918	-30.3%	-2,857,382	-47.0%	5.17%	
Total		-5	\$16,210,482		3.3%	\$14,740,932	4.5%	\$1,469,550	0.9%	0.75%	

Texas Lottery Commission
Instant Tickets by Price Point
Sales, Prize Expense, Sales Contribution and Payout Percentage With Year Over Year Changes
 Unaudited

Notes - Instant Ticket Variances

		FY 2010		FY 2009		Difference
Sales	\$1 - \$7		\$335,191,633		\$344,257,221	-\$9,065,588
Prize Exp.	\$1 - \$7		\$222,201,125		\$228,232,812	-\$6,031,687
Sales Cont.	\$1 - \$7		\$112,990,508		\$116,024,409	-\$3,033,901
Prize Exp. %	\$1 - \$7		66.3%		66.3%	0.0%
		FY 2010		FY 2009		Difference
Sales	\$10 - \$50		\$167,178,690		\$141,902,620	\$25,276,070
Prize Exp.	\$10 - \$50		\$121,665,851		\$100,893,232	\$20,772,619
Sales Cont.	\$10 - \$50		\$45,512,839		\$41,009,388	\$4,503,451
Prize Exp. %	\$10 - \$50		72.8%		71.1%	1.7%
		FY 2010		FY 2009		Difference
Sales	Instant		\$502,370,323		\$486,159,841	\$16,210,482
Prize Exp.	Instant		\$343,866,976		\$329,126,044	\$14,740,932
Sales Cont.	Instant		\$158,503,347		\$157,033,797	\$1,469,550
Prize Exp. %	Instant		68.4%		67.7%	0.7%

		FY 2010		FY 2009		Difference
Sales	\$1 - \$10		\$409,735,933		\$407,939,471	\$1,796,462
Prize Exp.	\$1 - \$10		\$274,340,876		\$272,805,834	\$1,535,042
Sales Cont.	\$1 - \$10		\$135,395,057		\$135,133,637	\$261,420
Prize Exp. %	\$1 - \$10		67.0%		66.9%	0.1%
		FY 2010		FY 2009		Difference
Sales	\$20 - \$50		\$92,634,390		\$78,220,370	\$14,414,020
Prize Exp.	\$20 - \$50		\$69,526,100		\$56,320,210	\$13,205,890
Sales Cont.	\$20 - \$50		\$23,108,290		\$21,900,160	\$1,208,130
Prize Exp. %	\$20 - \$50		75.1%		72.0%	3.1%
		FY 2010		FY 2009		Difference
Sales	Instant		\$502,370,323		\$486,159,841	\$16,210,482
Prize Exp.	Instant		\$343,866,976		\$329,126,044	\$14,740,932
Sales Cont.	Instant		\$158,503,347		\$157,033,797	\$1,469,550
Prize Exp. %	Instant		68.4%		67.7%	0.7%

Texas Lottery Commission
 Weekly Sales Summary
 & Comparison to Previous Week
 Unaudited

	Week Ending 11/07/2009		Week Ending 10/31/2009			
	<u>THIS WEEK</u>	% of Sales	<u>LAST WEEK</u>	% of Sales	<u>\$ change</u>	<u>% change</u>
Total Sales	<u>\$71,595,539</u>		<u>\$66,395,573</u>		<u>\$5,199,966</u>	7.83%
Instant Tickets	<u>\$54,633,928</u>	76.3%	<u>\$50,684,853</u>	76.3%	<u>\$3,949,075</u>	7.79%
Lotto Texas	\$3,982,319	5.6%	\$3,749,006	5.6%	\$233,313	6.22%
Pick 3	\$5,265,021	7.4%	\$4,944,409	7.4%	\$320,612	6.48%
Pick 3 Sum It Up	\$105,181	0.1%	\$98,543	0.1%	\$6,638	6.74%
Cash 5	\$1,339,215	1.9%	\$1,289,523	1.9%	\$49,692	3.85%
Texas Two Step	\$853,140	1.2%	\$815,750	1.2%	\$37,390	4.58%
Mega Millions	\$3,458,403	4.8%	\$2,988,991	4.5%	\$469,412	15.70%
Megaplier	\$795,045	1.1%	\$717,574	1.1%	\$77,471	10.80%
Daily 4	\$1,058,564	1.5%	\$1,006,435	1.5%	\$52,129	5.18%
Daily 4 Sum It Up	<u>\$104,724</u>	0.1%	<u>\$100,490</u>	0.2%	<u>\$4,235</u>	4.21%
Total Online Sales	<u>\$16,961,611</u>		<u>\$15,710,720</u>		<u>\$1,250,891</u>	7.96%

* Totals may not sum due to rounding.

Texas Lottery Commission
Weekly Sales Summary
Unaudited

INSTANT TICKETS
TOP TEN SELLING GAMES

For the Week Ending : 11/07/2009

Rank	Price Point	Game	Sales (Millions)
1	\$ 20	\$500,000,000 BLOCKBUSTER	\$ 4.650
2	\$ 10	JINGLE JUMBO BUCKS	\$ 3.454
3	\$ 5	WINTER WINNINGS	\$ 3.186
4	\$ 20	MERRY MILLIONAIRE	\$ 3.125
5	\$ 10	BIG PAYOUT	\$ 1.820
6	\$ 5	SUPER WILD 8'S	\$ 1.761
7	\$ 5	DALLAS COWBOYS	\$ 1.749
8	\$ 3	BONUS WORD CASHWORD	\$ 1.742
9	\$ 3	BONUS CASHWORD	\$ 1.724
10	\$ 7	SPARKLING 7'S	\$ 1.698

Texas Lottery Commission
Prize Payout Tracking Report
Unaudited

Through Week Ending 11/07/2009

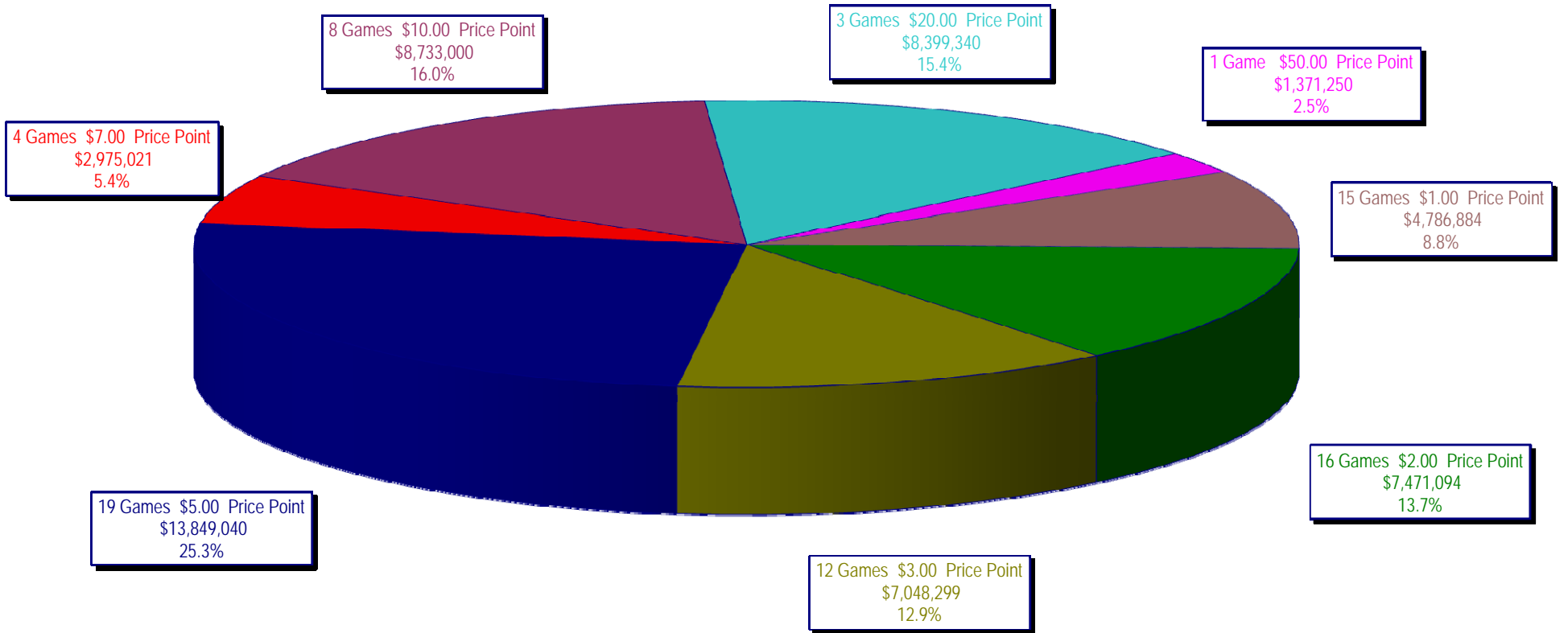
On-Line Sales

		FY Sales Through Week Ending 11/7/2009		FY Prize Expense Through Week Ending 11/7/2009	Actual* Prize Payout	Base Payout (Prize Pool)
Lotto	\$	60,288,413	\$	30,165,320	50.04%	50.00%
Pick 3		49,821,388		22,585,810	45.33%	50.00%
Pick 3 Sum It Up		995,525		446,497	44.85%	50.00%
Cash 5		12,703,891		6,353,316	50.01%	50.00%
Texas Two-Step		8,146,967		4,335,728	53.22%	50.00%
Mega Millions		37,179,586		18,761,869	50.46%	50.00%**
Megaplier		8,312,268		2,736,218	32.92%	N/A
Daily 4		9,485,416		5,018,975	52.91%	50.00%
Daily 4-Sum It Up		937,581		480,564	51.26%	50.00%
Totals	\$	187,871,034	\$	90,884,297	48.38%	

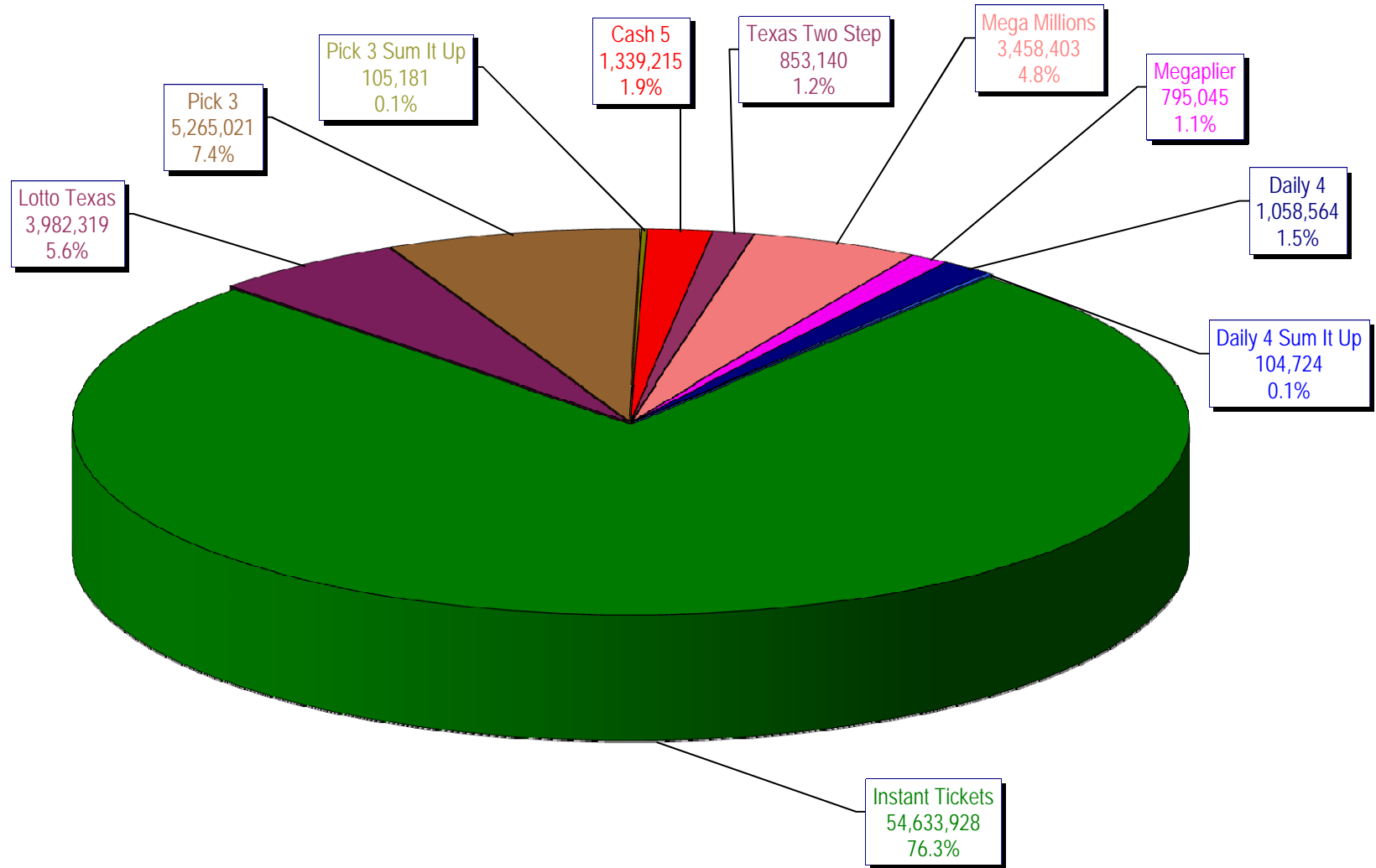
* Before Unclaimed Prizes

** Estimated; depends on # of guaranteed prizes won in Texas

Texas Lottery Commission
Instant Ticket Sales
For the Week Ending 11/07/2009
(Unaudited)



Texas Lottery Commission
All Game Sales
For the Week Ending 11/07/2009
(Unaudited)



Texas Lottery Commission - Weekly Sales Summary for FY 2010 (Unaudited)

Week Ended	Instant Games	New Games & Dates	Lotto Texas	Jackpot W	S	Pick 3	Pick 3 Sum It Up	Cash 5	Texas Two Step	Jackpot M	TH	Mega Millions	Jackpot T	F	Megaplier	Daily 4	Daily 4 Sum It Up	Total	Per Cap.
9/5/2009	53,436,608.00	1183 (\$2,N) - 08/31/09	6,294,287.00	45	47	5,276,229.00	104,886.00	1,338,093.00	1,212,330.00	1.2	200	2,959,401.00	12	12	708,622.00	955,411.00	95,751.00	72,381,618.00	2.98
9/12/2009	49,896,100.00	1200 (\$1,N); 1201 (\$10,N) - 09/07/09	6,426,945.00	49	51	5,109,927.50	104,641.00	1,278,982.00	771,782.00	225	200	2,811,431.00	18	28	693,407.00	918,268.00	90,931.50	68,102,415.00	2.80
9/19/2009	50,971,937.00	1202 (\$3,N); 1185 (\$5,N) - 09/14/09	6,496,645.00	53	55	5,176,010.00	103,700.00	1,295,302.00	803,124.00	200	225	3,164,844.00	38	51	760,088.00	965,671.50	94,237.00	69,831,558.50	2.87
9/26/2009	49,975,243.00	1141 (\$1,N); 1259 (\$3,N) - 09/21/09	6,765,369.00	57	59	4,894,237.50	98,171.00	1,271,129.00	915,249.00	275	400	3,568,088.00	62	75	822,408.00	918,596.00	92,187.50	69,320,678.00	2.85
10/3/2009	52,283,569.00	1203 (\$2,N); 1172 (\$5,N) - 09/28/09	7,003,107.00	61	63	5,156,873.00	102,841.50	1,315,863.00	1,111,913.00	525	650	4,270,019.00	88	105	939,935.00	993,158.50	97,984.50	73,275,263.50	3.01
10/10/2009	52,238,261.00	1205 (\$1,N); 1263 (\$3,N) - 10/05/09	7,061,948.00	64	67	5,050,571.00	102,586.50	1,300,852.00	811,464.00	200	225	5,100,350.00	122	145	1,050,507.00	971,147.50	98,012.50	73,785,699.50	3.03
10/17/2009	50,806,599.00	1187 (\$2,N); 1193 (\$20,N) - 10/12/09	7,262,683.00	70	73	4,990,457.00	99,389.50	1,276,305.00	769,253.00	200	200	6,449,660.00	170	200	1,245,391.00	931,084.00	90,371.00	73,921,192.50	3.04
10/24/2009	50,731,592.00	1188 (\$3,N); 1189 (\$5,N) - 10/19/09	5,785,292.00	76	4	4,845,815.00	93,256.00	1,282,033.00	806,971.00	225	275	2,776,628.00	12	18	663,491.00	931,641.00	89,284.00	68,006,003.00	2.80
10/31/2009	50,684,853.00	1192 (\$10,N); 1186 (\$1,N) - 10/26/09	3,749,006.00	5	6	4,944,409.00	98,542.50	1,289,523.00	815,750.00	375	200	2,988,991.00	28	40	717,574.00	1,006,435.00	100,489.50	66,395,573.00	2.73
11/7/2009	54,633,928.00	1191 (\$7,N) - 11/02/09	3,982,319.00	7	8	5,265,020.50	105,180.50	1,339,215.00	853,140.00	225	275	3,458,403.00	50	63	795,045.00	1,058,564.00	104,724.00	71,595,539.00	2.94
weekly change	7.79%		6.22%			6.48%	6.74%	3.85%	4.58%			15.70%			10.80%	5.18%	4.21%	7.83%	
	SALES		SALES			SALES	SALES	SALES	SALES			SALES			SALES	SALES	SALES	SALES	% of Sales
Startup to date	36,774,488,622.00		10,539,901,960.00			3,633,419,145.00	13,396,600.00	2,202,608,031.00	485,934,898.00			1,178,710,185.45			273,880,555.00	98,535,627.00	14,691,408.00	55,423,701,003.45	100.0%
Calendar Year to date	2,392,584,947.00		200,532,668.00			242,259,646.00	175,670.50	59,869,577.00	44,775,761.00			194,753,281.95			42,012,740.00	42,327,968.50	4,550,600.50	3,223,842,860.45	100.0%
Fiscal Year to date 2010	502,370,323.00		60,288,413.00			49,821,387.50	995,524.50	12,703,891.00	8,146,967.00			37,179,586.00			8,312,268.00	9,485,416.00	937,581.00	690,241,357.00	100.0%