



*WEEKLY SALES SUMMARY*

Unaudited

[Week Ending: 11/11/2017](#)

Texas Lottery Commission  
Fiscal Year to Date Sales Comparison  
Unaudited

Through the Week Ending 11/11/2017 (11 Weeks)

Sales by Game	FY 2016 *	FY 2017 **	FY 2018	\$ Change		% Change	
				FY 2018 to FY 2016	FY 2018 to FY 2017	FY 2018 to FY 2016	FY 2018 to FY 2017
Scratch Tickets	\$ 698,233,742	\$ 721,402,049	\$ 777,190,947	\$ 78,957,205	\$ 55,788,898	11.3%	7.7%
Lotto Texas	26,973,904	22,642,491	22,584,042	-4,389,862	-58,449	-16.3%	-0.3%
Lotto Extra	4,530,989	4,302,401	4,813,717	282,728	511,316	6.2%	11.9%
Pick 3	52,022,944	48,978,493	49,328,965	-2,693,979	350,473	-5.2%	0.7%
Pick 3 Sum It Up	1,056,576	938,454	974,141	-82,436	35,687	-7.8%	3.8%
Cash Five	9,706,810	8,790,310	8,396,961	-1,309,850	-393,350	-13.5%	-4.5%
Texas Two Step	11,340,459	10,283,547	9,344,939	-1,995,520	-938,608	-17.6%	-9.1%
Mega Millions	27,790,553	20,999,868	21,929,878	-5,860,675	930,010	-21.1%	4.4%
Megaplier	6,845,091	5,770,338	5,650,620	-1,194,471	-119,718	-17.5%	-2.1%
MM Just the Jackpot	-	-	198,471	198,471	198,471	-	-
Daily 4	17,696,930	18,125,833	21,314,648	3,617,718	3,188,815	20.4%	17.6%
Daily 4 Sum It Up	915,968	950,409	1,153,041	237,073	202,632	25.9%	21.3%
Powerball	43,851,379	42,165,887	38,044,437	-5,806,942	-4,121,450	-13.2%	-9.8%
Power Play	5,661,254	6,003,512	6,035,691	374,437	32,179	6.6%	0.5%
All or Nothing	6,591,004	5,844,330	5,791,610	-799,394	-52,720	-12.1%	-0.9%
Texas Triple Chance	5,256,855	3,265,818	2,565,358	-2,691,497	-700,460	-51.2%	-21.4%
<b>Total</b>	<b>\$ 918,474,458</b>	<b>\$ 920,463,739</b>	<b>\$ 975,317,464</b>	<b>\$ 56,843,007</b>	<b>\$ 54,853,726</b>	<b>6.2%</b>	<b>6.0%</b>

\* 3 extra days

\*\* 1 extra day

Texas Lottery Commission  
Fiscal Year to Date Cumulative Average Sales Comparison  
Unaudited

Through the Week Ending 11/11/2017 (11 Weeks)

Sales by Game	FY 2016	FY 2017	FY 2018
Scratch Tickets	\$ 9,309,783	\$ 9,882,220	\$ 10,794,319
Lotto Texas	359,652	310,171	313,667
Lotto Extra	60,413	58,937	66,857
Pick 3	693,639	670,938	685,125
Pick 3 Sum It Up	14,088	12,856	13,530
Cash Five	129,424	120,415	116,624
Texas Two Step	151,206	140,871	129,791
Mega Millions	370,541	287,669	304,582
Megaplier	91,268	79,046	78,481
MM Just the Jackpot	-	- **	13,231
Daily 4	235,959	248,299	296,037
Daily 4 Sum It Up	12,213	13,019	16,014
Powerball	584,685	577,615	528,395
Power Play	75,483	82,240	83,829
All or Nothing	87,880	80,059	80,439
Texas Triple Chance	* 107,283	44,737	35,630
<b>Total</b>	<b>\$ 12,283,517</b>	<b>\$ 12,609,092</b>	<b>\$ 13,556,551</b>

	thru 11/14/2015	thru 11/12/2016	thru 11/11/2017
	75 days	73 days	72 days
*	49 days		** 15 days

Texas Lottery Commission  
Fiscal Year Over Year Change in Sales  
Unaudited  
FY 2018 Compared to FY 2017

			SCRATCH TICKETS				DRAW GAMES				TOTAL SALES			
FY 2018			FY 2018	FY 2017	Difference	% change - Cumulative Sales	FY 2018	FY 2017	Difference	% change - Cumulative Sales	FY 2018	FY 2017	Difference	% change - Cumulative Sales
Week	Week Ending													
1	9/2/2017 *		\$23,058,926	\$32,980,266	(\$9,921,340)	-30.1%	\$6,902,847	\$10,218,656	(\$3,315,809)	-32.4%	\$29,961,773	\$43,198,922	(\$13,237,149)	-30.6%
2	9/9/2017		\$71,784,232	\$65,952,418	\$5,831,814	8.8%	\$18,779,001	\$19,635,377	(\$856,376)	-4.4%	\$90,563,233	\$85,587,795	\$4,975,438	5.8%
3	9/16/2017		\$72,828,393	\$66,196,270	\$6,632,123	10.0%	\$19,679,292	\$20,915,290	(\$1,235,999)	-5.9%	\$92,507,685	\$87,111,560	\$5,396,125	6.2%
4	9/23/2017		\$71,147,147	\$64,383,005	\$6,764,142	10.5%	\$18,601,742	\$17,451,165	\$1,150,577	6.6%	\$89,748,889	\$81,834,170	\$7,914,719	9.7%
5	9/30/2017		\$74,749,619	\$67,349,951	\$7,399,668	11.0%	\$18,436,682	\$17,519,852	\$916,830	5.2%	\$93,186,301	\$84,869,803	\$8,316,498	9.8%
6	10/7/2017		\$78,134,381	\$71,598,690	\$6,535,691	9.1%	\$19,297,281	\$18,211,107	\$1,086,174	6.0%	\$97,431,662	\$89,809,797	\$7,621,865	8.5%
7	10/14/2017		\$74,084,207	\$69,444,762	\$4,639,445	6.7%	\$19,185,335	\$18,075,261	\$1,110,074	6.1%	\$93,269,542	\$87,520,023	\$5,749,519	6.6%
8	10/21/2017		\$77,631,892	\$69,317,066	\$8,314,826	12.0%	\$19,573,636	\$18,422,336	\$1,151,300	6.2%	\$97,205,528	\$87,739,402	\$9,466,126	10.8%
9	10/28/2017		\$76,385,130	\$69,729,599	\$6,655,531	9.5%	\$18,788,634	\$18,535,248	\$253,386	1.4%	\$95,173,764	\$88,264,847	\$6,908,917	7.8%
10	11/4/2017		\$78,814,323	\$73,451,702	\$5,362,621	7.3%	\$19,564,629	\$20,151,939	(\$587,310)	-2.9%	\$98,378,952	\$93,603,641	\$4,775,312	5.1%
11	11/11/2017		\$78,572,697	\$70,998,320	\$7,574,377	10.7%	\$19,317,440	\$19,925,460	(\$608,020)	-3.1%	\$97,890,137	\$90,923,780	\$6,966,358	7.7%
12	11/18/2017			\$75,265,196				\$21,424,637				\$96,689,833		
13	11/25/2017			\$68,983,157				\$24,223,331				\$93,206,488		
14	12/2/2017			\$72,688,514				\$17,653,328				\$90,341,842		
15	12/9/2017			\$71,676,549				\$18,150,590				\$89,827,139		
16	12/16/2017			\$73,909,726				\$19,814,333				\$93,724,059		
17	12/23/2017			\$77,369,179				\$19,276,415				\$96,645,594		
18	12/30/2017			\$80,868,854				\$19,289,161				\$100,158,015		
19	1/6/2018			\$73,328,624				\$18,611,644				\$91,940,268		
20	1/13/2018			\$73,471,643				\$20,351,397				\$93,823,040		
21	1/20/2018			\$72,229,342				\$20,349,310				\$92,578,652		
22	1/27/2018			\$72,056,793				\$21,668,657				\$93,725,450		
23	2/3/2018			\$77,292,806				\$22,161,789				\$99,454,595		
24	2/10/2018			\$78,699,192				\$22,100,245				\$100,799,437		
25	2/17/2018			\$77,864,124				\$24,776,465				\$102,640,589		
26	2/24/2018			\$80,287,015				\$28,133,116				\$108,420,131		
27	3/3/2018			\$87,500,184				\$20,213,859				\$107,714,043		
28	3/10/2018			\$84,966,053				\$21,024,757				\$105,990,810		
29	3/17/2018			\$82,972,977				\$20,434,291				\$103,407,268		
30	3/24/2018			\$82,217,628				\$20,282,992				\$102,500,620		
31	3/31/2018			\$86,271,920				\$19,497,142				\$105,769,062		
32	4/7/2018			\$81,499,404				\$17,854,294				\$99,353,698		
33	4/14/2018			\$81,831,134				\$17,865,636				\$99,696,770		
34	4/21/2018			\$80,531,863				\$18,337,257				\$98,869,120		
35	4/28/2018			\$81,433,819				\$18,956,981				\$100,390,800		
36	5/5/2018			\$84,857,262				\$19,489,624				\$104,346,886		
37	5/12/2018			\$81,090,824				\$19,420,237				\$100,511,061		
38	5/19/2018			\$80,557,866				\$20,939,291				\$101,497,157		
39	5/26/2018			\$78,141,293				\$21,072,651				\$99,213,944		
40	6/2/2018			\$78,991,820				\$23,569,252				\$102,561,072		
41	6/9/2018			\$77,859,970				\$29,337,930				\$107,197,900		
42	6/16/2018			\$75,964,093				\$18,618,777				\$94,582,870		

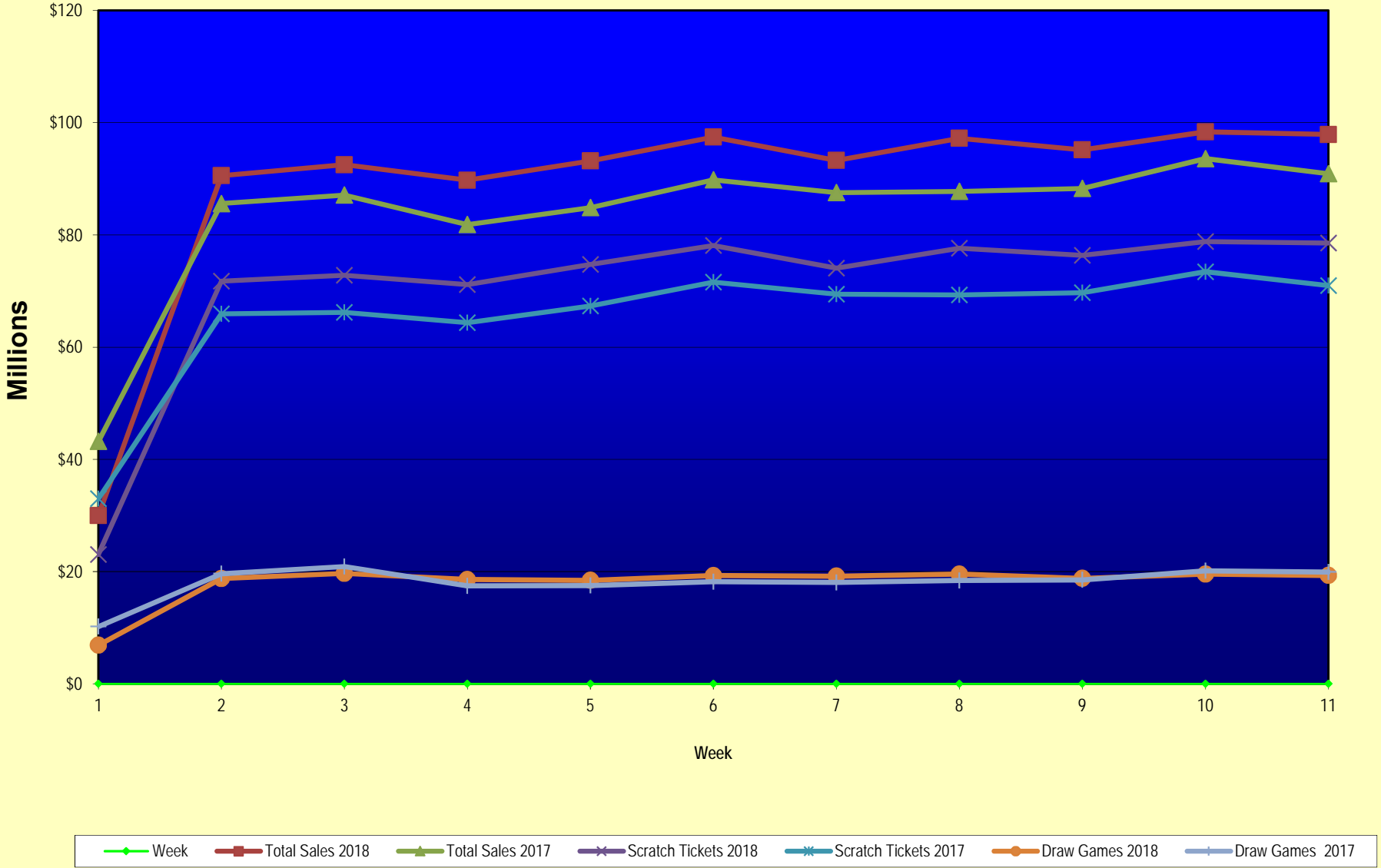
Texas Lottery Commission  
Fiscal Year Over Year Change in Sales  
Unaudited  
FY 2018 Compared to FY 2017

			SCRATCH TICKETS				DRAW GAMES				TOTAL SALES			
FY 2018			FY 2018	FY 2017	Difference	% change - Cumulative Sales	FY 2018	FY 2017	Difference	% change - Cumulative Sales	FY 2018	FY 2017	Difference	% change - Cumulative Sales
Week	Week Ending													
43	6/23/2018			\$75,379,863				\$18,464,310				\$93,844,173		
44	6/30/2018			\$76,450,854				\$19,685,004				\$96,135,858		
45	7/7/2018			\$75,420,516				\$20,817,697				\$96,238,213		
46	7/14/2018			\$74,068,426				\$21,553,240				\$95,621,666		
47	7/21/2018			\$75,926,884				\$21,909,933				\$97,836,817		
48	7/28/2018			\$68,526,927				\$22,791,762				\$91,318,689		
49	8/4/2018			\$74,104,794				\$27,396,555				\$101,501,349		
50	8/11/2018			\$73,356,820				\$37,340,879				\$110,697,699		
51	8/18/2018			\$74,114,510				\$42,787,014				\$116,901,524		
52	8/25/2018			\$70,061,982				\$55,854,516				\$125,916,498		
	8/31/2018 **			\$43,727,573				\$9,679,652				\$53,407,225		
Total thru Current Week			\$777,190,947	\$721,402,049	\$55,788,898	7.7%	\$198,126,517	\$199,061,690	(\$935,173)	-0.5%	\$975,317,464	\$920,463,739	\$54,853,726	6.0%
Fiscal Year Total			\$777,190,947	\$3,935,220,022			\$198,126,517	\$1,142,241,630			\$975,317,464	\$5,077,461,652		

\* FY 18 includes 2 days; FY 17 includes 3 days

\*\* FY 18 includes 6 days; FY 17 includes 5 days

### Texas Lottery Commission Fiscal Year Over Year Change in Sales



Note: Week 1 is not a full week of sales as this report is prepared on a Fiscal Year basis.

Texas Lottery Commission  
Scratch Tickets by Price Point  
Sales, Prize Expense, Sales Contribution and Payout Percentage With Year Over Year Changes  
Unaudited

Fiscal Year	Price Point	# of Active Games	FY Sales	% of Scratch Ticket Sales	Year over Year Change in Sales	FY Prize Expense	Year over Year Change in Prize Expense	FY Sales Contribution	Year over Year Change in Contribution	Average Prize Payout %	Year over Year Change in Payout %
2017	\$1.00	16	28,949,487	4.0%		17,590,188		11,359,299		60.8%	0.9%
Through	\$2.00	22	61,826,426	8.6%		40,257,989		21,568,437		65.1%	-0.1%
11/12/2016	\$3.00	8	49,732,701	6.9%		32,786,558		16,946,143		65.9%	0.1%
	\$5.00	38	228,272,615	31.6%		155,078,250		73,194,365		67.9%	0.0%
	\$10.00	14	141,515,090	19.6%		100,068,478		41,446,612		70.7%	0.8%
	\$20.00	10	176,727,080	24.5%		132,422,872		44,304,208		74.9%	0.0%
	\$50.00	4	34,378,650	4.8%		26,752,483		7,626,167		77.8%	0.0%
<b>Total</b>		<b>112</b>	<b>\$721,402,049</b>			<b>\$504,956,818</b>		<b>\$216,445,231</b>		<b>70.0%</b>	<b>0.6%</b>
2018	\$1.00	16	27,955,185	3.6%		16,978,724		10,976,461		60.7%	0.8%
Through	\$2.00	16	56,229,606	7.2%		36,603,370		19,626,236		65.1%	-0.1%
11/11/2017	\$3.00	10	55,215,591	7.1%		36,404,387		18,811,204		65.9%	0.0%
	\$5.00	41	226,036,305	29.1%		153,662,081		72,374,224		68.0%	0.0%
	\$10.00	15	183,938,410	23.7%		128,867,423		55,070,987		70.1%	-0.3%
	\$20.00	13	169,165,100	21.8%		126,791,523		42,373,577		75.0%	0.0%
	\$50.00	4	58,650,750	7.5%		45,737,629		12,913,121		78.0%	0.1%
<b>Total</b>		<b>115</b>	<b>\$777,190,947</b>			<b>\$545,045,137</b>		<b>\$232,145,810</b>		<b>70.1%</b>	<b>0.4%</b>
Variance	\$1.00	0	-994,302		-3.4%	-611,463	-3.5%	-382,839	-3.4%	-0.03%	
2018 to	\$2.00	-6	-5,596,820		-9.1%	-3,654,619	-9.1%	-1,942,201	-9.0%	-0.02%	
2017	\$3.00	2	5,482,890		11.0%	3,617,829	11.0%	1,865,061	11.0%	0.01%	
	\$5.00	3	-2,236,310		-1.0%	-1,416,169	-0.9%	-820,141	-1.1%	0.05%	
	\$10.00	1	42,423,320		30.0%	28,798,945	28.8%	13,624,375	32.9%	-0.65%	
	\$20.00	3	-7,561,980		-4.3%	-5,631,350	-4.3%	-1,930,630	-4.4%	0.02%	
	\$50.00	0	24,272,100		70.6%	18,985,146	71.0%	5,286,954	69.3%	0.17%	
<b>Total</b>		<b>3</b>	<b>\$55,788,898</b>		<b>7.7%</b>	<b>\$40,088,319</b>	<b>7.9%</b>	<b>\$15,700,579</b>	<b>7.3%</b>	<b>0.13%</b>	

Notes - Scratch Ticket Variances

Texas Lottery Commission  
Scratch Tickets by Price Point  
Sales, Prize Expense, Sales Contribution and Payout Percentage With Year Over Year Changes  
Unaudited

			FY 2018		FY 2017	Difference
Sales	\$1 - \$5		\$365,436,687		\$368,781,229	-\$3,344,542
Prize Exp.	\$1 - \$5		\$243,648,562		\$245,712,985	-\$2,064,423
Sales Cont.	\$1 - \$5		\$121,788,125		\$123,068,244	-\$1,280,119
Prize Exp. %	\$1 - \$5		66.7%		66.6%	0.0%
			FY 2018		FY 2017	Difference
Sales	\$10 - \$50		\$411,754,260		\$352,620,820	\$59,133,440
Prize Exp.	\$10 - \$50		\$301,396,575		\$259,243,833	\$42,152,742
Sales Cont.	\$10 - \$50		\$110,357,685		\$93,376,987	\$16,980,698
Prize Exp. %	\$10 - \$50		73.2%		73.5%	-0.3%
			FY 2018		FY 2017	Difference
Sales	Scratch		\$777,190,947		\$721,402,049	\$55,788,898
Prize Exp.	Scratch		\$545,045,137		\$504,956,818	\$40,088,319
Sales Cont.	Scratch		\$232,145,810		\$216,445,231	\$15,700,579
Prize Exp. %	Scratch		70.1%		70.0%	0.1%

			FY 2018		FY 2017	Difference
Sales	\$1 - \$10		\$549,375,097		\$510,296,319	\$39,078,778
Prize Exp.	\$1 - \$10		\$372,515,985		\$345,781,463	\$26,734,522
Sales Cont.	\$1 - \$10		\$176,859,112		\$164,514,856	\$12,344,256
Prize Exp. %	\$1 - \$10		67.8%		67.8%	0.0%
			FY 2018		FY 2017	Difference
Sales	\$20 - \$50		\$227,815,850		\$211,105,730	\$16,710,120
Prize Exp.	\$20 - \$50		\$172,529,152		\$159,175,355	\$13,353,797
Sales Cont.	\$20 - \$50		\$55,286,698		\$51,930,375	\$3,356,323
Prize Exp. %	\$20 - \$50		75.7%		75.4%	0.3%
			FY 2018		FY 2017	Difference
Sales	Scratch		\$777,190,947		\$721,402,049	\$55,788,898
Prize Exp.	Scratch		\$545,045,137		\$504,956,818	\$40,088,319
Sales Cont.	Scratch		\$232,145,810		\$216,445,231	\$15,700,579
Prize Exp. %	Scratch		70.1%		70.0%	0.1%



Texas Lottery Commission  
**Weekly Sales Summary**  
**& Comparison to Previous Week**  
 Unaudited

	Week Ending 11/11/2017	% of Sales	Week Ending 11/04/2017	% of Sales	\$ change	% change
	<u>THIS WEEK</u>		<u>LAST WEEK</u>			
Total Sales	<u>\$97,890,137</u>		<u>\$98,378,952</u>		<u>-\$488,815</u>	-0.50%
Scratch Tickets	<u>\$78,572,697</u>	80.3%	<u>\$78,814,323</u>	80.1%	<u>-\$241,626</u>	-0.31%
Lotto	\$2,315,922	2.4%	\$2,333,965	2.4%	-\$18,043	-0.77%
Lotto Extra	\$490,024	0.5%	\$494,349	0.5%	-\$4,325	-0.87%
Pick 3	\$4,901,274	5.0%	\$4,926,697	5.0%	-\$25,423	-0.52%
Pick 3 Sum It Up	\$94,521	0.1%	\$96,245	0.1%	-\$1,725	-1.79%
Cash Five	\$817,975	0.8%	\$820,269	0.8%	-\$2,294	-0.28%
Texas Two Step	\$894,972	0.9%	\$887,674	0.9%	\$7,298	0.82%
Mega Millions	\$2,652,012	2.7%	\$2,753,000	2.8%	-\$100,988	-3.67%
Megaplier	\$410,066	0.4%	\$421,360	0.4%	-\$11,294	-2.68%
MM Just the Jackpot	\$62,832	0.1%	\$112,668	0.1%	-\$49,836	-44.23%
Daily 4	\$2,069,360	2.1%	\$2,205,239	2.2%	-\$135,879	-6.16%
Daily 4 Sum It Up	\$110,879	0.1%	\$114,585	0.1%	-\$3,706	-3.23%
Powerball	\$3,183,712	3.3%	\$3,078,822	3.1%	\$104,890	3.41%
Power Play	\$507,890	0.5%	\$500,061	0.5%	\$7,829	1.57%
All or Nothing	\$563,738	0.6%	\$571,658	0.6%	-\$7,920	-1.39%
Texas Triple Chance	\$242,264	0.2%	\$248,038	0.3%	-\$5,774	-2.33%
Total Draw Game Sales	<u>\$19,317,440</u>		<u>\$19,564,629</u>		<u>-\$247,189</u>	-1.26%

\* Totals may not sum due to rounding.

Texas Lottery Commission  
Weekly Sales Summary  
Unaudited

SCRATCH TICKETS  
TOP TEN SELLING GAMES

For the week ending: 11/11/2017

Rank	Price Point	Game	Sales (Millions)
1	\$ 10	MEGA LOTERIA	\$ 3.843
2	\$ 50	TEXAS LOTTERY PLATINUM	\$ 3.662
3	\$ 20	TEXAS LOTTERY GOLD	\$ 3.488
4	\$ 5	SUPER LOTERIA	\$ 3.477
5	\$ 5	DIAMOND MINE 9X	\$ 3.439
6	\$ 10	SEASON'S GREETINGS	\$ 3.353
7	\$ 10	TEXAS LOTTERY BLACK	\$ 3.079
8	\$ 20	INSTANT MILLIONAIRE	\$ 2.728
9	\$ 20	ULTIMATE CROSSWORD/ULTIMATE BINGO	\$ 2.704
10	\$ 50	ULTIMATE MILLIONS	\$ 2.589

Texas Lottery Commission  
Prize Payout Tracking Report  
Unaudited

Through the week ending: 11/11/2017

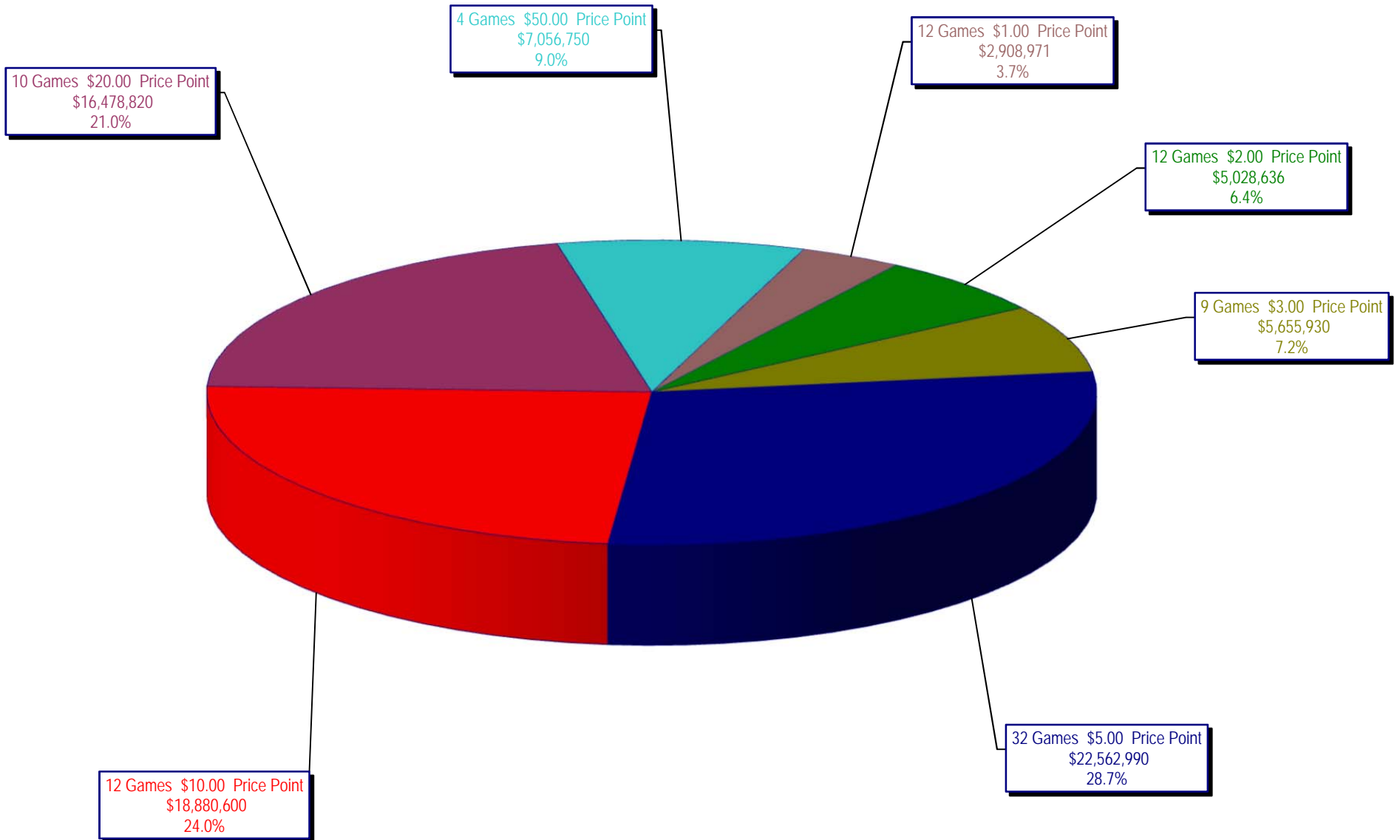
Draw Game Sales

		FY Sales Through Week Ending 11/11/2017		FY Prize Expense Through Week Ending 11/11/2017	Actual* Prize Payout	Base Payout (Prize Pool)
Lotto	\$	22,584,042	\$	11,049,165	48.92%	50.00%
Lotto Extra		4,813,717		2,739,482	56.91%	53.70%
Pick 3		49,328,965		23,095,790	46.82%	50.00%
Pick 3 Sum It Up		974,141		447,331	45.92%	50.00%
Cash Five		8,396,961		4,198,538	50.00%	50.00%
Texas Two Step		9,344,939		4,717,255	50.48%	50.00%
Mega Millions		21,929,878		11,332,544	51.68%	50.00%**
Megaplier		5,650,620		2,868,765	50.77%	N/A
MM Just the Jackpot		198,471		91,323	46.01%	50.00%**
Daily 4		21,314,648		15,640,600	73.38%	50.00%
Daily 4 Sum It Up		1,153,041		454,309	39.40%	50.00%
Powerball		38,044,437		19,190,619	50.44%	50.00%**
Power Play		6,035,691		3,047,312	50.49%	N/A
All or Nothing		5,791,610		3,448,478	59.54%	55.98%
Texas Triple Chance		2,565,358		1,163,989	45.37%	54.42%
<b>Totals</b>	\$	<b>198,126,517</b>	\$	<b>103,485,500</b>	<b>52.23%</b>	

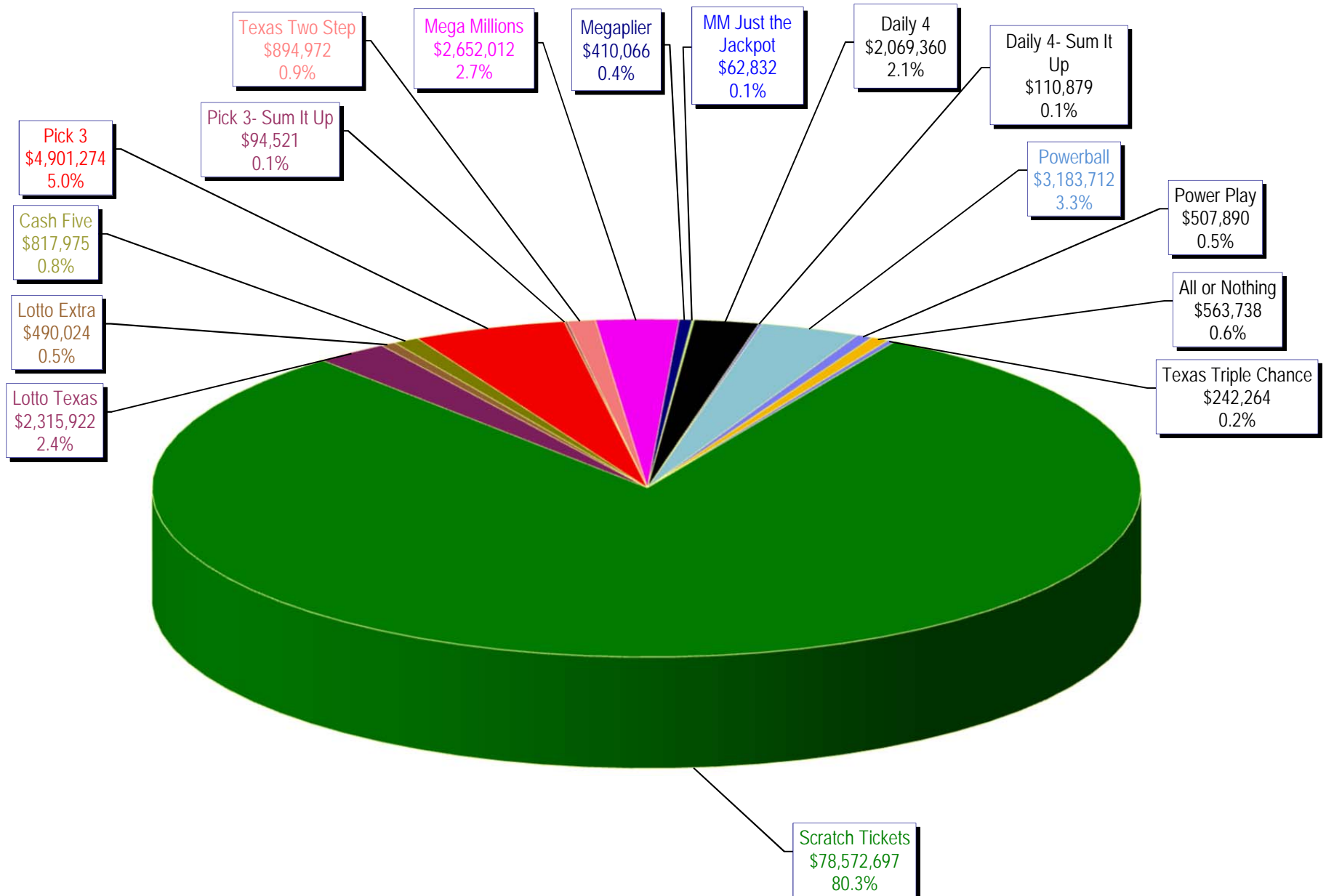
\* Before Unclaimed Prizes

\*\*Estimated; depends on # of guaranteed prizes won in Texas

Texas Lottery Commission  
Scratch Ticket Sales  
For the week ending 11/11/2017  
(Unaudited)



**Texas Lottery Commission**  
**All Game Sales**  
For the week ending 11/11/2017  
(Unaudited)



Texas Lottery Commission - Weekly Sales Summary for FY 2017 (Unaudited)

Week Ended	Scratch Tickets	New Games & Dates	Lotto Texas	Jackpot W	S	Lotto Extra	Pick 3	Pick 3 Sum It Up	Cash Five	Texas Two Step	Jackpot M	TH	Mega Millions	Jackpot T	F	Megaplier	MM Just the Jackpot	Daily 4	Daily 4 Sum It Up	Powerball	Jackpot W	S	Power Play	All or Nothing	Texas Triple Chance	Total	Per Cap.	
9/2/2017*	66,786,499	0	1,882,138	7.75	8	407,969	4,127,448	87,462	745,315	757,964	225	250	1,839,333	45	53	546,532		1,675,002	88,460	3,160,562	53	68	527,201	510,296	226,818	83,368,998	2.99	
9/9/2017	71,784,232	1894 (\$1.N); 1895 (\$3.N); 1896 (\$5.N); 1897 (\$10.N); 1898 (\$20.N) - 9/05/17	2,030,456	8.25	9	434,404	4,673,693	94,976	810,225	814,157	200	225	2,116,454	61	70	610,101		1,864,288	98,842	3,815,824	83	102	614,504	550,992	250,086	90,563,233	3.25	
9/16/2017	72,628,393	0	2,072,973	9.5	10.25	441,815	4,761,239	95,625	803,128	1,009,847	275	400	2,218,181	76	86	632,423		1,969,938	107,496	4,120,318	115	132	647,273	549,860	248,976	92,507,685	3.32	
9/23/2017	71,147,147	2000 (\$5.N); 1885 (\$10.N) - 9/18/17	2,083,698	10.75	11.5	444,009	4,652,157	91,944	799,261	958,113	550	200	2,417,135	94	104	676,790		1,999,292	111,399	3,062,637	40	53	505,638	554,074	245,596	89,748,889	3.22	
9/30/2017	74,749,619	0	2,123,157	12	12.75	453,258	4,787,745	93,462	817,582	914,011	225	300	1,798,854	15	20	540,169		2,140,708	114,176	3,298,744	66	80	535,906	567,658	251,252	93,186,301	3.34	
10/7/2017	78,134,381	1857 (\$1.N); 1871 (\$5.N); 2002 (\$20.N) - 10/02/17	2,158,233	13.5	14	461,982	4,884,513	93,622	837,916	1,157,363	425	575	1,859,000	25	30	555,420		2,086,885	112,246	3,678,352	94	112	585,624	570,242	255,884	97,431,662	3.50	
10/14/2017	74,084,207	0	2,161,597	14.75	15.5	460,731	4,743,121	91,735	812,165	832,638	200	225	1,899,412	36	43	564,073		2,060,922	109,910	4,013,728	128	143	621,796	564,614	248,894	93,269,542	3.35	
10/21/2017	77,631,892	2003 (\$2.N); 2004 (\$5.N); 1899 (\$50.N) - 10/16/17	2,191,085	16	16.75	466,612	4,682,503	94,156	810,073	1,008,511	300	425	1,677,423	15	20	505,340		2,117,469	116,022	4,422,740	156	173	670,007	563,200	248,496	97,205,528	3.49	
10/28/2017	76,385,130	0	2,227,162	17.25	18.25	475,194	4,654,638	92,765	797,066	786,381	200	200	1,737,391	25	30	493,983	22,971	2,144,198	121,467	3,852,082	191	40	595,303	547,396	240,638	95,173,764	3.42	
11/4/2017	78,814,323	0	2,333,965	18.75	19.25	494,349	4,926,697	96,245	820,269	887,674	225	275	2,753,000	40	48	421,360	112,668	2,205,239	114,585	3,078,822	52	64	500,061	571,658	248,038	98,378,952	3.53	
11/11/2017	78,572,697	2005 (\$1.N); 2006 (\$3.N); 2007 (\$5.N); 2008 (\$10.N) - 11/06/17	2,315,922	19.75	20.5	490,024	4,901,274	94,521	817,975	894,972	400	200	2,652,012	59	71	410,066	62,832	2,069,360	110,879	3,183,712	75	90	507,890	563,738	242,264	97,890,137	3.51	
weekly change	-0.3%		-0.8%			-0.9%	-0.5%	-1.8%	-0.3%	0.8%			-3.7%			-2.7%	-4.2%	-6.2%	-3.2%	3.4%		1.6%	-1.4%	-2.3%	-2.3%			
<b>SALES</b>	<b>SALES</b>	<b>SALES</b>	<b>SALES</b>	<b>SALES</b>	<b>SALES</b>	<b>SALES</b>	<b>SALES</b>	<b>SALES</b>	<b>SALES</b>	<b>SALES</b>	<b>SALES</b>	<b>SALES</b>	<b>SALES</b>	<b>SALES</b>	<b>SALES</b>	<b>SALES</b>	<b>SALES</b>	<b>SALES</b>	<b>SALES</b>	<b>SALES</b>	<b>SALES</b>	<b>SALES</b>	<b>SALES</b>	<b>SALES</b>	<b>SALES</b>	<b>SALES</b>	<b>SALES</b>	<b>% of Sales</b>
Calendar Year to date	3,470,247,745		98,269,442			20,199,384	217,589,539	4,253,390	37,418,877	45,733,147			118,524,389			31,194,066	198,471	86,670,156	4,647,666	263,036,230			36,797,784	25,119,582	11,822,542	4,471,722,409	100.0%	
Fiscal Year to date 2018	777,190,947		22,584,042			4,813,717	49,328,965	974,141	8,396,961	9,344,939			21,929,878			5,650,620	198,471	21,314,648	1,153,041	38,044,437			6,035,691	5,791,610	2,565,358	975,317,464	100.0%	
*Full week includes 5 days from FY17																												