



*WEEKLY SALES SUMMARY*

Unaudited

**Week Ending: 11/14/2009**

Texas Lottery Commission  
Fiscal Year to Date Sales Comparison  
Unaudited

Through the week ending 11/14/2009 (11 weeks)

Sales by Game	FY 2008 *	FY 2009 **	FY 2010	\$ Change		% Change	
				FY 2010 to FY 2008	FY 2010 to FY 2009 to	FY 2010 to FY 2008	FY 2010 to FY 2009
Instants	\$ 578,856,014	\$ 539,644,653	\$ 554,479,541	\$ -24,376,473	\$ 14,834,888	-4.2%	2.7%
Lotto Texas	46,082,162	37,122,996	64,273,906	18,191,744	27,150,910	39.5%	73.1%
Pick 3	60,645,181	56,186,568	54,993,990	-5,651,191	-1,192,578	-9.3%	-2.1%
Pick 3 Sum It Up	201,606	1,207,670	1,100,307	898,701	-107,364	-	-8.9%
Cash 5	16,786,558	14,600,737	13,978,464	-2,808,094	-622,273	-16.7%	-4.3%
Texas Two Step	9,282,052	9,947,320	8,976,574	-305,478	-970,746	-3.3%	-9.8%
Mega Millions	27,943,661	27,087,359	40,390,204	12,446,543	13,302,846	44.5%	49.1%
Megaplier	7,286,440	7,078,540	9,064,633	1,778,193	1,986,093	24.4%	28.1%
Daily 4	8,200,427	8,410,584	10,468,759	2,268,332	2,058,175	-	24.5%
Daily 4 Sum It Up	2,437,967	1,125,185	1,031,547	-1,406,420	-93,638	-	-8.3%
<b>Total</b>	<b>\$ 757,722,068</b>	<b>\$ 702,411,611</b>	<b>\$ 758,757,924</b>	<b>\$ 1,035,857</b>	<b>\$ 56,346,314</b>	<b>0.1%</b>	<b>8.0%</b>

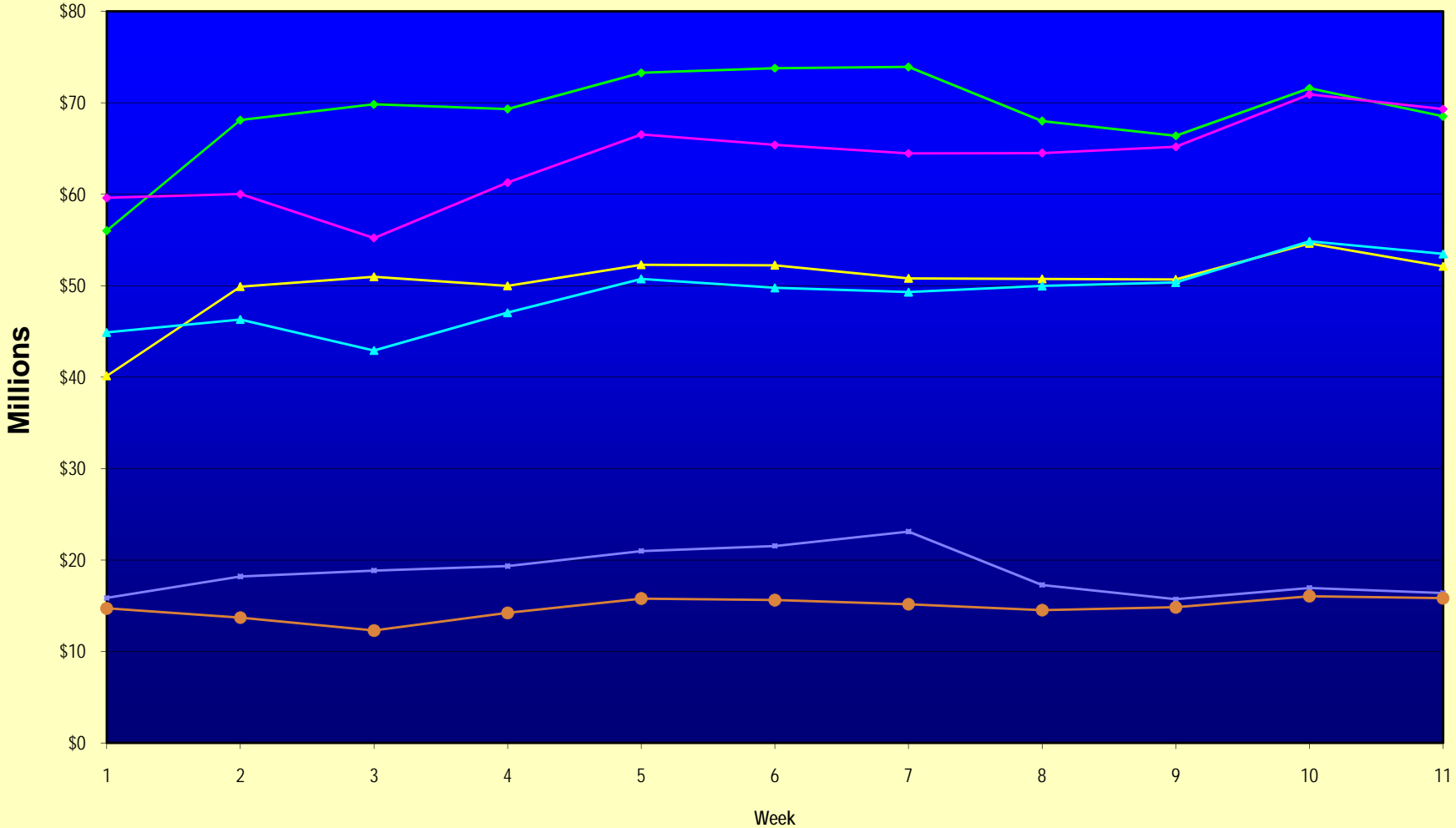
\* 3 extra days      \*\* 1 extra day

Texas Lottery Commission  
 Fiscal Year to Date Cumulative Average Sales Comparison  
 Unaudited

Through the week ending 11/14/2009 (11 weeks)

Sales by Game	FY 2008	FY 2009	FY 2010
Instants	\$ 7,421,231	\$ 7,100,588	\$ 7,393,061
Lotto Texas	590,797	488,460	856,985
Pick 3	777,502	739,297	733,253
Pick 3 Sum It Up	2,585	15,890	14,671
Cash 5	215,212	192,115	186,380
Texas Two Step	119,001	130,886	119,688
Mega Millions	358,252	356,413	538,536
Megaplier	93,416	93,139	120,862
Daily 4	105,134	110,666	139,583
Daily 4 Sum It Up	31,256	14,805	13,754
<b>Total</b>	<b>\$ <u>9,714,385</u></b>	<b>\$ <u>9,242,258</u></b>	<b>\$ <u>10,116,772</u></b>
	thru 11/17/2007 78 days	thru 11/15/2008 76 days	thru 11/14/2009 75 days

### Texas Lottery Commission Fiscal Year Over Year Change in Sales



Note: Week 1 is not a full week of sales as this report is prepared on a Fiscal Year basis.

Texas Lottery Commission  
Instant Tickets by Price Point  
Sales, Prize Expense, Sales Contribution and Payout Percentage With Year Over Year Changes  
Unaudited

Fiscal Year	Price Point	# of Active Games	FY Sales	% of Instant Ticket Sales	Year over Year Change in Sales	FY Prize Expense	Year over Year Change in Prize Expense	FY Sales Contribution	Year over Year Change in Contribution	Average Prize Payout %	Year over Year Change in Payout %
2009	\$1.00	29	45,294,669	8.4%		27,306,933		17,987,736		60.3%	0.3%
thru	\$2.00	25	95,576,256	17.7%		61,993,283		33,582,973		64.9%	-0.6%
11/15/2008	\$3.00	13	60,832,527	11.3%		39,974,879		20,857,648		65.7%	0.0%
	\$5.00	28	161,144,619	29.9%		109,603,083		51,541,536		68.0%	0.1%
	\$7.00	6	20,219,017	3.7%		13,755,931		6,463,086		68.0%	0.0%
	\$10.00	12	70,917,750	13.1%		49,636,558		21,281,192		70.0%	0.0%
	\$20.00	7	54,194,300	10.0%		38,896,612		15,297,688		71.8%	0.0%
	\$25.00	1	2,356,375	0.4%		1,713,928		642,447		72.7%	0.2%
	\$30.00	3	5,126,640	1.0%		3,716,494		1,410,146		72.5%	0.1%
	\$50.00	3	23,982,500	4.4%		17,346,360		6,636,140		72.3%	0.2%
<b>Total</b>		<b>127</b>	<b>\$539,644,653</b>			<b>\$363,944,062</b>		<b>\$175,700,591</b>		<b>67.4%</b>	<b>-0.3%</b>
2010	\$1.00	25	47,017,661	8.5%		28,268,171		18,749,490		60.1%	0.1%
thru	\$2.00	29	80,230,234	14.5%		53,569,273		26,660,961		66.8%	2.5%
11/14/2009	\$3.00	14	70,085,598	12.6%		46,064,786		24,020,812		65.7%	0.2%
	\$5.00	30	151,372,928	27.3%		102,772,735		48,600,193		67.9%	-0.2%
	\$7.00	5	22,008,210	4.0%		14,964,051		7,044,159		68.0%	0.0%
	\$10.00	12	82,092,670	14.8%		57,420,615		24,672,055		69.9%	0.0%
	\$20.00	5	86,040,640	15.5%		64,202,462		21,838,178		74.6%	2.0%
	\$25.00	0	-	0.0%		-		-		0.0%	-100.0%
	\$30.00	0	-	0.0%		-		-		0.0%	-100.0%
	\$50.00	2	15,631,600	2.8%		12,109,426		3,522,174		77.5%	3.9%
<b>Total</b>		<b>122</b>	<b>\$554,479,541</b>			<b>\$379,371,521</b>		<b>\$175,108,020</b>		<b>68.4%</b>	<b>1.0%</b>
Variance	\$1.00	-4	1,722,992		3.8%	961,238	3.5%	761,754	4.2%	-0.16%	
2010 to	\$2.00	4	-15,346,022		-16.1%	-8,424,009	-13.6%	-6,922,013	-20.6%	1.91%	
2009	\$3.00	1	9,253,071		15.2%	6,089,907	15.2%	3,163,164	15.2%	0.01%	
	\$5.00	2	-9,771,691		-6.1%	-6,830,348	-6.2%	-2,941,343	-5.7%	-0.12%	
	\$7.00	-1	1,789,193		8.8%	1,208,120	8.8%	581,073	9.0%	-0.04%	
	\$10.00	0	11,174,920		15.8%	7,784,058	15.7%	3,390,862	15.9%	-0.05%	
	\$20.00	-2	31,846,340		58.8%	25,305,850	65.1%	6,540,490	42.8%	2.85%	
	\$25.00	-1	-2,356,375		-100.0%	-1,713,928	-100.0%	-642,447	-100.0%	-72.74%	
	\$30.00	-3	-5,126,640		-100.0%	-3,716,494	-100.0%	-1,410,146	-100.0%	-72.49%	
	\$50.00	-1	-8,350,900		-34.8%	-5,236,934	-30.2%	-3,113,966	-46.9%	5.14%	
<b>Total</b>		<b>-5</b>	<b>\$14,834,888</b>		<b>2.7%</b>	<b>\$15,427,456</b>	<b>4.2%</b>	<b>-\$592,571</b>	<b>-0.3%</b>	<b>0.98%</b>	

Texas Lottery Commission  
**Instant Tickets by Price Point**  
**Sales, Prize Expense, Sales Contribution and Payout Percentage With Year Over Year Changes**  
 Unaudited

Notes - Instant Ticket Variances

		FY 2010		FY 2009		Difference
Sales	\$1 - \$7		\$370,714,631		\$383,067,088	-\$12,352,457
Prize Exp.	\$1 - \$7		\$245,639,017		\$252,634,109	-\$6,995,092
Sales Cont.	\$1 - \$7		\$125,075,614		\$130,432,979	-\$5,357,365
Prize Exp. %	\$1 - \$7		66.3%		66.0%	0.3%
		FY 2010		FY 2009		Difference
Sales	\$10 - \$50		\$183,764,910		\$156,577,565	\$27,187,345
Prize Exp.	\$10 - \$50		\$133,732,503		\$111,309,953	\$22,422,551
Sales Cont.	\$10 - \$50		\$50,032,407		\$45,267,612	\$4,764,794
Prize Exp. %	\$10 - \$50		72.8%		71.1%	1.7%
		FY 2010		FY 2009		Difference
Sales	Instant		\$554,479,541		\$539,644,653	\$14,834,888
Prize Exp.	Instant		\$379,371,521		\$363,944,062	\$15,427,459
Sales Cont.	Instant		\$175,108,020		\$175,700,591	-\$592,571
Prize Exp. %	Instant		68.4%		67.4%	1.0%

		FY 2010		FY 2009		Difference
Sales	\$1 - \$10		\$452,807,301		\$453,984,838	-\$1,177,537
Prize Exp.	\$1 - \$10		\$303,059,632		\$302,270,667	\$788,966
Sales Cont.	\$1 - \$10		\$149,747,669		\$151,714,171	-\$1,966,503
Prize Exp. %	\$1 - \$10		66.9%		66.6%	0.3%
		FY 2010		FY 2009		Difference
Sales	\$20 - \$50		\$101,672,240		\$85,659,815	\$16,012,425
Prize Exp.	\$20 - \$50		\$76,311,888		\$61,673,395	\$14,638,493
Sales Cont.	\$20 - \$50		\$25,360,352		\$23,986,420	\$1,373,932
Prize Exp. %	\$20 - \$50		75.1%		72.0%	3.1%
		FY 2010		FY 2009		Difference
Sales	Instant		\$554,479,541		\$539,644,653	\$14,834,888
Prize Exp.	Instant		\$379,371,521		\$363,944,062	\$15,427,459
Sales Cont.	Instant		\$175,108,020		\$175,700,591	-\$592,571
Prize Exp. %	Instant		68.4%		67.4%	1.0%

Texas Lottery Commission  
**Weekly Sales Summary**  
**& Comparison to Previous Week**  
 Unaudited

	Week Ending 11/14/2009		Week Ending 11/07/2009			
	<u>THIS WEEK</u>	% of Sales	<u>LAST WEEK</u>	% of Sales	<u>\$ change</u>	<u>% change</u>
Total Sales	<u>\$68,516,567</u>		<u>\$71,595,539</u>		<u>-\$3,078,972</u>	-4.30%
Instant Tickets	<u>\$52,109,218</u>	76.1%	<u>\$54,633,928</u>	76.3%	<u>-\$2,524,710</u>	-4.62%
Lotto Texas	\$3,985,493	5.8%	\$3,982,319	5.6%	\$3,174	0.08%
Pick 3	\$5,172,603	7.5%	\$5,265,021	7.4%	-\$92,418	-1.76%
Pick 3 Sum It Up	\$104,782	0.2%	\$105,181	0.1%	-\$399	-0.38%
Cash 5	\$1,274,573	1.9%	\$1,339,215	1.9%	-\$64,642	-4.83%
Texas Two Step	\$829,607	1.2%	\$853,140	1.2%	-\$23,533	-2.76%
Mega Millions	\$3,210,618	4.7%	\$3,458,403	4.8%	-\$247,785	-7.16%
Megaplier	\$752,365	1.1%	\$795,045	1.1%	-\$42,680	-5.37%
Daily 4	\$983,343	1.4%	\$1,058,564	1.5%	-\$75,222	-7.11%
Daily 4 Sum It Up	<u>\$93,966</u>	0.1%	<u>\$104,724</u>	0.1%	<u>-\$10,758</u>	-10.27%
Total Online Sales	<u>\$16,407,349</u>		<u>\$16,961,611</u>		<u>-\$554,262</u>	-3.27%

\* Totals may not sum due to rounding.

Texas Lottery Commission  
Weekly Sales Summary  
Unaudited

INSTANT TICKETS  
TOP TEN SELLING GAMES

For the Week Ending : 11/14/2009

Rank	Price Point	Game	Sales (Millions)
1	\$ 20	\$500,000,000 BLOCKBUSTER	\$ 4.350
2	\$ 10	JINGLE JUMBO BUCKS	\$ 2.938
3	\$ 20	MERRY MILLIONAIRE	\$ 2.817
4	\$ 5	WINTER WINNINGS	\$ 2.518
5	\$ 7	SPARKLING 7'S	\$ 2.238
6	\$ 5	\$50,000 CASH WINFALL	\$ 2.190
7	\$ 3	BONUS CASHWORD	\$ 1.660
8	\$ 3	BONUS WORD CASHWORD	\$ 1.635
9	\$ 10	BIG PAYOUT	\$ 1.593
10	\$ 5	DALLAS COWBOYS	\$ 1.531



Texas Lottery Commission  
Prize Payout Tracking Report  
Unaudited

Through Week Ending 11/14/2009

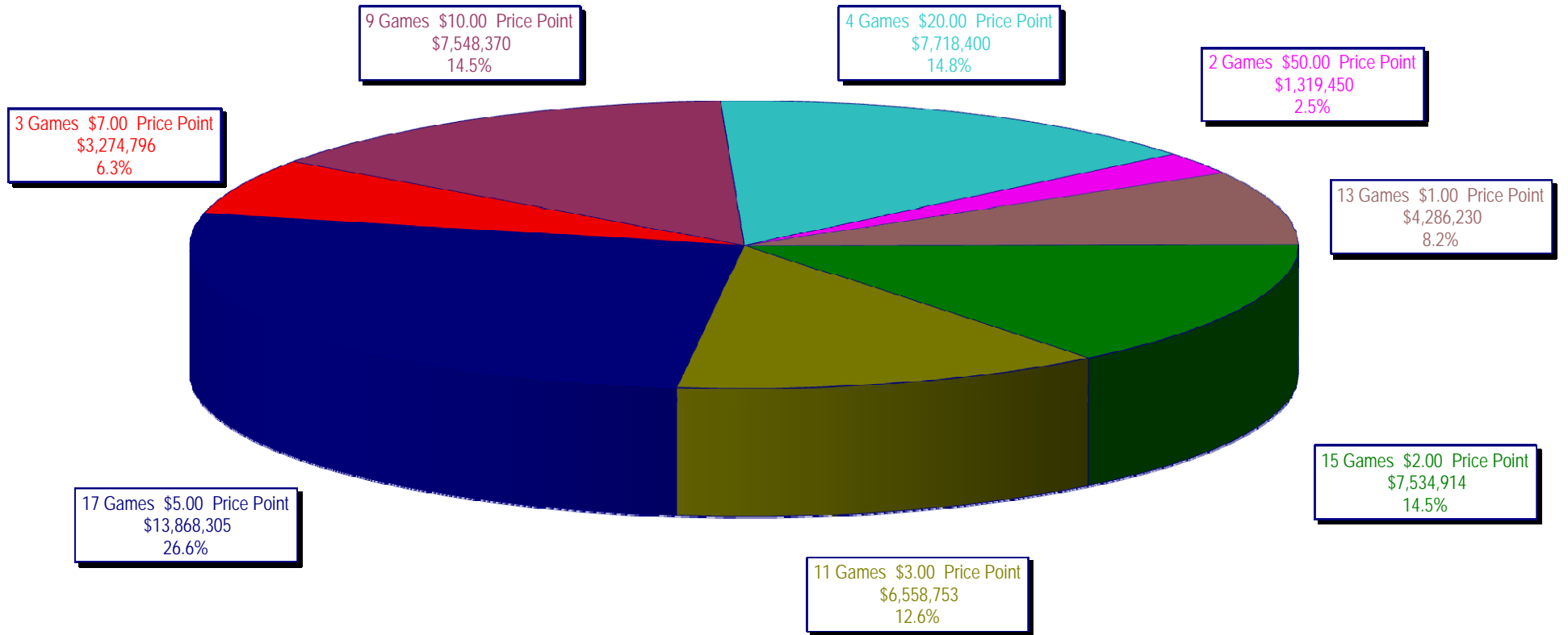
On-Line Sales

		FY Sales Through Week Ending 11/14/2009		FY Prize Expense Through Week Ending 11/14/2009	Actual* Prize Payout	Base Payout (Prize Pool)
Lotto	\$	64,273,906	\$	32,158,551	50.03%	50.00%
Pick 3		54,993,990		24,880,970	45.24%	50.00%
Pick 3 Sum It Up		1,100,307		484,949	44.07%	50.00%
Cash 5		13,978,464		7,219,907	51.65%	50.00%
Texas Two-Step		8,976,574		4,750,685	52.92%	50.00%
Mega Millions		40,390,204		20,492,163	50.74%	50.00%**
Megaplier		9,064,633		2,943,503	32.47%	N/A
Daily 4		10,468,759		5,454,950	52.11%	50.00%
Daily 4-Sum It Up		1,031,547		509,884	49.43%	50.00%
<b>Totals</b>	\$	<b>204,278,383</b>	\$	<b>98,895,561</b>	<b>48.41%</b>	

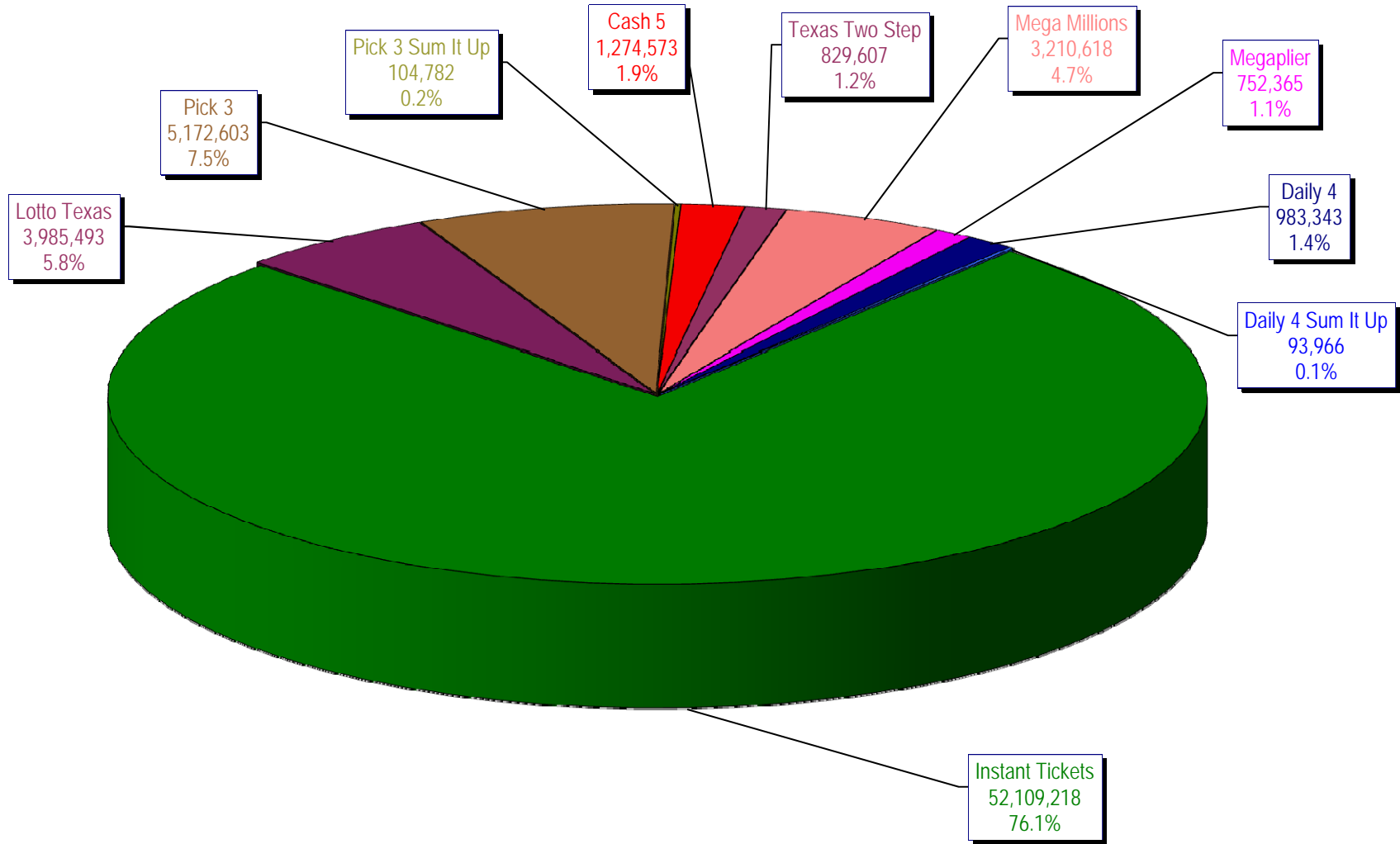
\* Before Unclaimed Prizes

\*\* Estimated; depends on # of guaranteed prizes won in Texas

Texas Lottery Commission  
Instant Ticket Sales  
For the Week Ending 11/14/2009  
(Unaudited)



Texas Lottery Commission  
**All Game Sales**  
For the Week Ending 11/14/2009  
(Unaudited)



Texas Lottery Commission - Weekly Sales Summary for FY 2010 (Unaudited)

Week Ended	Instant Games	New Games & Dates	Lotto Texas	Jackpot W	S	Pick 3	Pick 3 Sum It Up	Cash 5	Texas Two Step	Jackpot M	TH	Mega Millions	Jackpot T	F	Megaplier	Daily 4	Daily 4 Sum It Up	Total	Per Cap.
9/5/2009	53,436,608.00	1183 (\$2.N) - 08/31/09	6,294,287.00	45	47	5,276,229.00	104,886.00	1,338,093.00	1,212,330.00	1.2	200	2,959,401.00	12	12	708,622.00	955,411.00	95,751.00	72,381,618.00	2.98
9/12/2009	49,896,100.00	1200 (\$1.N); 1201 (\$10.N) - 09/07/09	6,426,945.00	49	51	5,109,927.50	104,641.00	1,278,982.00	771,782.00	225	200	2,811,431.00	18	28	693,407.00	918,268.00	90,931.50	68,102,415.00	2.80
9/19/2009	50,971,937.00	1202 (\$3.N); 1185 (\$5.N) - 09/14/09	6,496,645.00	53	55	5,176,010.00	103,700.00	1,295,302.00	803,124.00	200	225	3,164,844.00	38	51	760,088.00	965,671.50	94,237.00	69,831,558.50	2.87
9/26/2009	49,975,243.00	1141 (\$1.N); 1259 (\$3.N) - 09/21/09	6,765,369.00	57	59	4,894,237.50	98,171.00	1,271,129.00	915,249.00	275	400	3,568,088.00	62	75	822,408.00	918,596.00	92,187.50	69,320,678.00	2.85
10/3/2009	52,283,569.00	1203 (\$2.N); 1172 (\$5.N) - 09/28/09	7,003,107.00	61	63	5,156,873.00	102,841.50	1,315,863.00	1,111,913.00	525	650	4,270,019.00	88	105	939,935.00	993,158.50	97,984.50	73,275,263.50	3.01
10/10/2009	52,238,261.00	1205 (\$1.N); 1263 (\$3.N) - 10/05/09	7,061,948.00	64	67	5,050,571.00	102,586.50	1,300,852.00	811,464.00	200	225	5,100,350.00	122	145	1,050,507.00	971,147.50	98,012.50	73,785,699.50	3.03
10/17/2009	50,806,599.00	1187 (\$2.N); 1193 (\$20.N) - 10/12/09	7,262,683.00	70	73	4,990,457.00	99,389.50	1,276,305.00	769,253.00	200	200	6,449,660.00	170	200	1,245,391.00	931,084.00	90,371.00	73,921,192.50	3.04
10/24/2009	50,731,592.00	1188 (\$3.N); 1189 (\$5.N) - 10/19/09	5,785,292.00	76	4	4,845,815.00	93,256.00	1,282,033.00	806,971.00	225	275	2,776,628.00	12	18	663,491.00	931,641.00	89,284.00	68,006,003.00	2.80
10/31/2009	50,684,853.00	1192 (\$10.N); 1186 (\$1.N) - 10/26/09	3,749,006.00	5	6	4,944,409.00	98,542.50	1,289,523.00	815,750.00	375	200	2,988,991.00	28	40	717,574.00	1,006,435.00	100,489.50	66,395,573.00	2.73
11/7/2009	54,633,928.00	1191 (\$7.N) - 11/02/09	3,982,319.00	7	8	5,265,020.50	105,180.50	1,339,215.00	853,140.00	225	275	3,458,403.00	50	63	795,045.00	1,058,564.00	104,724.00	71,595,539.00	2.94
11/14/2009	52,109,218.00	1218 (\$2.N); 1184 (\$5.N) - 11/09/09	3,985,493.00	9	10	5,172,602.50	104,782.00	1,274,573.00	829,607.00	375	200	3,210,618.00	77	12	752,365.00	983,342.50	93,966.00	68,516,567.00	2.82
weekly change	-4.62%		0.08%			-1.76%	-0.38%	-4.83%	-2.76%			-7.16%			-5.37%	-7.11%	-10.27%	-4.30%	
	<b>SALES</b>		<b>SALES</b>			<b>SALES</b>	<b>SALES</b>	<b>SALES</b>	<b>SALES</b>			<b>SALES</b>			<b>SALES</b>	<b>SALES</b>	<b>SALES</b>	<b>SALES</b>	<b>% of Sales</b>
Startup to date	36,826,597,840.00		10,543,887,453.00			3,638,591,747.50	13,501,382.00	2,203,882,604.00	486,764,505.00			1,181,920,803.45			274,632,920.00	99,518,969.50	14,785,374.00	55,492,217,570.45	100.0%
Calendar Year to date	2,444,694,165.00		204,518,161.00			247,432,248.50	175,670.50	61,144,150.00	45,605,368.00			197,963,899.95			42,765,105.00	43,311,311.00	4,644,566.50	3,292,254,645.45	100.0%
Fiscal Year to date 2010	554,479,541.00		64,273,906.00			54,993,990.00	1,100,306.50	13,978,464.00	8,976,574.00			40,390,204.00			9,064,633.00	10,468,758.50	1,031,547.00	758,757,924.00	100.0%