



*WEEKLY SALES SUMMARY*

Unaudited

[Week Ending: 11/14/2015](#)

Texas Lottery Commission  
Fiscal Year to Date Sales Comparison  
Unaudited

Through the Week Ending 11/14/2015 (11 Weeks)

Sales by Game	FY 2014 *	FY 2015 **	FY 2016	\$ Change		% Change	
				FY 2016 to FY 2014	FY 2016 to FY 2015	FY 2016 to FY 2014	FY 2016 to FY 2015
Scratch Tickets	\$ 659,280,589	\$ 673,642,256	\$ 698,233,742	\$ 38,953,153	\$ 24,591,486	5.9%	3.7%
Lotto Texas	28,617,256	25,105,830	26,973,904	-1,643,352	1,868,074	-5.7%	7.4%
Lotto Extra	3,600,247	3,780,166	4,530,989	930,742	750,823	25.9%	19.9%
Pick 3	53,239,419	51,772,897	52,022,944	-1,216,475	250,048	-2.3%	0.5%
Pick 3 Sum It Up	1,056,935	997,442	1,056,576	-359	59,134	0.0%	5.9%
Cash Five	11,121,620	10,393,209	9,706,810	-1,414,810	-686,399	-12.7%	-6.6%
Texas Two Step	12,215,263	12,284,408	11,340,459	-874,804	-943,949	-7.2%	-7.7%
Mega Millions	28,914,076	35,916,811	27,790,553	-1,123,523	-8,126,258	-3.9%	-22.6%
Megaplier	6,394,885	8,020,388	6,845,091	450,206	-1,175,297	7.0%	-14.7%
Daily 4	17,450,825	17,284,050	17,696,930	246,105	412,880	1.4%	2.4%
Daily 4 Sum It Up	1,081,458	1,049,430	915,968	-165,490	-133,462	-15.3%	-12.7%
Powerball	54,565,255	38,891,439	43,851,379	-10,713,876	4,959,940	-19.6%	12.8%
Power Play	6,191,618	5,005,942	5,661,254	-530,364	655,312	-8.6%	13.1%
All or Nothing	10,225,348	8,337,774	6,591,004	-3,634,344	-1,746,770	-35.5%	-21.0%
Monopoly	-	1,526,755	-	-	-1,526,755	-	-100.0%
Texas Triple Chance	-	-	5,256,855	5,256,855	5,256,855	-	-
<b>Total</b>	<b>\$ 893,954,793</b>	<b>\$ 894,008,796</b>	<b>\$ 918,474,458</b>	<b>\$ 24,519,665</b>	<b>\$ 24,465,662</b>	<b>2.7%</b>	<b>2.7%</b>

\* 2 extra days

\*\* 1 extra day

Texas Lottery Commission  
Fiscal Year to Date Cumulative Average Sales Comparison  
Unaudited

Through the Week Ending 11/14/2015 (11 Weeks)

Sales by Game	FY 2014	FY 2015	FY 2016
Scratch Tickets	\$ 8,562,086	\$ 8,863,714	\$ 9,309,783
Lotto Texas	371,653	330,340	359,652
Lotto Extra	46,756	49,739	60,413
Pick 3	691,421	681,222	693,639
Pick 3 Sum It Up	13,726	13,124	14,088
Cash Five	144,437	136,753	129,424
Texas Two Step	158,640	161,637	151,206
Mega Millions	375,507	472,590	370,541
Megaplier	83,050	105,531	91,268
Daily 4	226,634	227,422	235,959
Daily 4 Sum It Up	14,045	13,808	12,213
Powerball	708,640	511,729	584,685
Power Play	80,411	65,868	75,483
All or Nothing	132,797	109,708	87,880
Monopoly	- **	54,527	-
Texas Triple Chance	-	-	* 107,283
<b>Total</b>	<b>\$ <u>11,609,803</u></b>	<b>\$ <u>11,797,712</u></b>	<b>\$ <u>12,283,517</u></b>

thru 11/16/2013  
77 days

\*\*

thru 11/15/2014  
76 days  
28 days

\*

thru 11/14/2015  
75 days  
49 days

Texas Lottery Commission  
Fiscal Year Over Year Change in Sales  
Unaudited  
FY 2016 Compared to FY 2015

			SCRATCH TICKETS				DRAW GAMES				TOTAL SALES			
Week	FY 2016		FY 2015	Difference	% change - Cumulative Sales	FY 2016	FY 2015	Difference	% change - Cumulative Sales	FY 2016	FY 2015	Difference	% change - Cumulative Sales	
	Week	Ending												
1	9/5/2015	*	\$49,534,249	\$54,911,801	(\$5,377,552)	-9.8%	\$17,091,724	\$17,482,488	(\$390,765)	-2.2%	\$66,625,973	\$72,394,289	(\$5,768,317)	-8.0%
2	9/12/2015		\$61,566,291	\$61,436,533	\$129,758	0.2%	\$20,630,922	\$19,097,081	\$1,533,841	8.0%	\$82,197,213	\$80,533,614	\$1,663,599	2.1%
3	9/19/2015		\$63,530,657	\$60,959,234	\$2,571,423	4.2%	\$20,327,253	\$20,567,894	(\$240,641)	-1.2%	\$83,857,910	\$81,527,128	\$2,330,782	2.9%
4	9/26/2015		\$61,731,400	\$59,710,056	\$2,021,344	3.4%	\$22,252,290	\$19,920,828	\$2,331,462	11.7%	\$83,983,690	\$79,630,884	\$4,352,806	5.5%
5	10/3/2015		\$67,048,415	\$62,119,854	\$4,928,561	7.9%	\$25,436,791	\$18,531,421	\$6,905,370	37.3%	\$92,485,206	\$80,651,275	\$11,833,931	14.7%
6	10/10/2015		\$66,049,706	\$61,253,665	\$4,796,041	7.8%	\$18,138,977	\$18,985,332	(\$846,355)	-4.5%	\$84,188,683	\$80,238,997	\$3,949,687	4.9%
7	10/17/2015		\$65,073,593	\$60,230,048	\$4,843,545	8.0%	\$17,776,414	\$19,538,402	(\$1,761,988)	-9.0%	\$82,850,007	\$79,768,450	\$3,081,558	3.9%
8	10/24/2015		\$64,087,437	\$62,384,112	\$1,703,325	2.7%	\$18,450,464	\$21,475,643	(\$3,025,179)	-14.1%	\$82,537,901	\$83,859,755	(\$1,321,854)	-1.6%
9	10/31/2015		\$66,025,374	\$63,404,713	\$2,620,661	4.1%	\$19,568,150	\$23,568,817	(\$4,000,668)	-17.0%	\$85,593,524	\$86,973,530	(\$1,380,007)	-1.6%
10	11/7/2015		\$68,137,192	\$65,486,719	\$2,650,473	4.0%	\$20,398,351	\$23,749,032	(\$3,350,681)	-14.1%	\$88,535,543	\$89,235,751	(\$700,208)	-0.8%
11	11/14/2015		\$65,449,428	\$61,745,521	\$3,703,907	6.0%	\$20,169,382	\$17,449,604	\$2,719,779	15.6%	\$85,618,810	\$79,195,125	\$6,423,686	8.1%
12	11/21/2015			\$66,353,583				\$17,108,084				\$83,461,667		
13	11/28/2015			\$60,471,184				\$17,303,129				\$77,774,313		
14	12/5/2015			\$66,648,696				\$18,862,425				\$85,511,121		
15	12/12/2015			\$65,708,630				\$18,649,598				\$84,358,228		
16	12/19/2015			\$68,551,298				\$19,051,100				\$87,602,398		
17	12/26/2015			\$73,858,618				\$20,006,357				\$93,864,975		
18	1/2/2016			\$67,733,268				\$21,355,167				\$89,088,435		
19	1/9/2016			\$64,745,641				\$22,265,347				\$87,010,988		
20	1/16/2016			\$64,015,166				\$23,694,617				\$87,709,783		
21	1/23/2016			\$62,569,156				\$19,765,442				\$82,334,598		
22	1/30/2016			\$68,001,588				\$22,877,000				\$90,878,588		
23	2/6/2016			\$75,677,650				\$31,662,209				\$107,339,859		
24	2/13/2016			\$75,368,712				\$46,091,747				\$121,460,459		
25	2/20/2016			\$74,833,076				\$19,865,172				\$94,698,248		
26	2/27/2016			\$69,918,013				\$19,735,352				\$89,653,365		
27	3/5/2016			\$74,848,961				\$19,946,068				\$94,795,029		
28	3/12/2016			\$70,079,409				\$20,044,562				\$90,123,971		
29	3/19/2016			\$70,368,686				\$18,480,795				\$88,849,481		
30	3/26/2016			\$70,280,600				\$17,595,205				\$87,875,805		
31	4/2/2016			\$74,369,952				\$18,378,917				\$92,748,869		
32	4/9/2016			\$67,416,817				\$18,594,844				\$86,011,661		
33	4/16/2016			\$68,393,316				\$18,104,632				\$86,497,948		
34	4/23/2016			\$70,078,182				\$17,957,150				\$88,035,332		
35	4/30/2016			\$71,744,718				\$18,961,113				\$90,705,831		
36	5/7/2016			\$73,415,978				\$20,210,341				\$93,626,319		
37	5/14/2016			\$72,152,109				\$20,362,774				\$92,514,883		
38	5/21/2016			\$70,399,950				\$21,246,276				\$91,646,226		
39	5/28/2016			\$68,547,554				\$22,227,946				\$90,775,500		
40	6/4/2016			\$71,254,006				\$20,739,703				\$91,993,709		
41	6/11/2016			\$65,878,375				\$17,216,403				\$83,094,778		
42	6/18/2016			\$66,658,742				\$17,340,531				\$83,999,273		

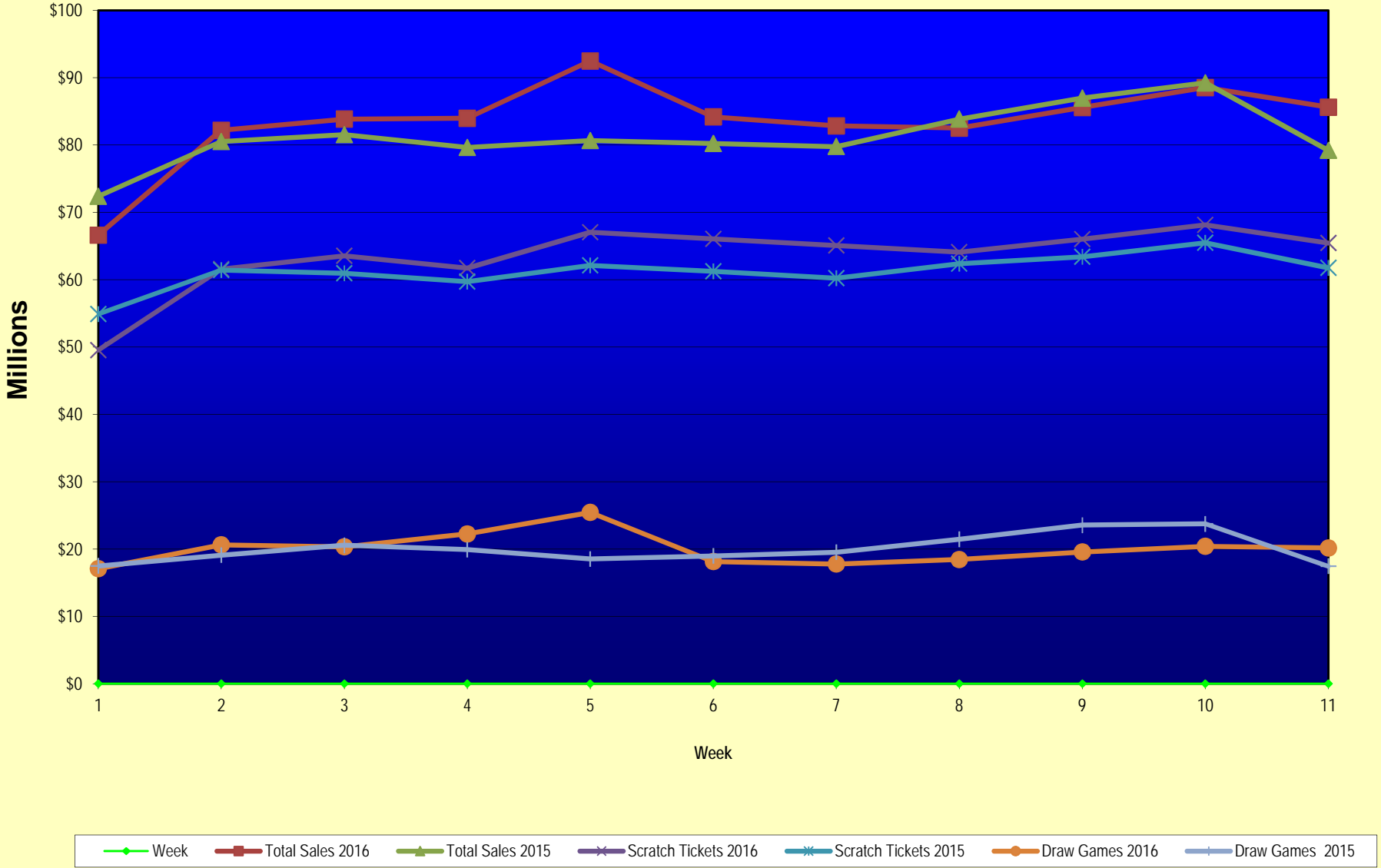
Texas Lottery Commission  
Fiscal Year Over Year Change in Sales  
Unaudited  
FY 2016 Compared to FY 2015

			SCRATCH TICKETS				DRAW GAMES				TOTAL SALES			
FY 2016			FY 2016	FY 2015	Difference	% change - Cumulative Sales	FY 2016	FY 2015	Difference	% change - Cumulative Sales	FY 2016	FY 2015	Difference	% change - Cumulative Sales
Week	Week	Ending												
43	6/25/2016			\$65,282,276				\$16,873,368				\$82,155,644		
44	7/2/2016			\$67,757,752				\$18,007,540				\$85,765,292		
45	7/9/2016			\$64,718,254				\$18,203,985				\$82,922,239		
46	7/16/2016			\$64,957,977				\$18,792,785				\$83,750,762		
47	7/23/2016			\$62,541,241				\$18,229,965				\$80,771,206		
48	7/30/2016			\$66,468,460				\$17,742,489				\$84,210,949		
49	8/6/2016			\$62,412,598				\$17,331,374				\$79,743,972		
50	8/13/2016			\$62,089,389				\$17,501,599				\$79,590,988		
51	8/20/2016			\$62,437,148				\$17,779,458				\$80,216,606		
52	8/27/2016			\$61,403,206				\$18,529,560				\$79,932,766		
	8/31/2016 **			\$17,309,621				\$3,279,958				\$20,589,579		
Total thru Current Week			\$698,233,742	\$673,642,256	\$24,591,486	3.7%	\$220,240,716	\$220,366,540	(\$125,825)	-0.1%	\$918,474,458	\$894,008,796	\$24,465,662	2.7%
Fiscal Year Total			\$698,233,742	\$3,481,361,812			\$220,240,716	\$1,048,338,613			\$918,474,458	\$4,529,700,425		

\* FY 16 includes 5 days; FY 15 includes 6 days

\*\* FY 16 includes 4 days; FY 15 includes 2 days

### Texas Lottery Commission Fiscal Year Over Year Change in Sales



Note: Week 1 is not a full week of sales as this report is prepared on a Fiscal Year basis.

Texas Lottery Commission  
Scratch Tickets by Price Point  
Sales, Prize Expense, Sales Contribution and Payout Percentage With Year Over Year Changes  
Unaudited

Fiscal Year	Price Point	# of Active Games	FY Sales	% of Scratch Ticket Sales	Year over Year Change in Sales	FY Prize Expense	Year over Year Change in Prize Expense	FY Sales Contribution	Year over Year Change in Contribution	Average Prize Payout %	Year over Year Change in Payout %
2015	\$1.00	16	34,239,377	5.1%		21,195,304		13,044,073		61.9%	3.3%
Through	\$2.00	24	70,564,648	10.5%		47,090,595		23,474,053		66.7%	2.9%
11/15/2014	\$3.00	11	67,198,341	10.0%		44,290,372		22,907,969		65.9%	0.4%
	\$5.00	34	213,731,530	31.7%		145,191,475		68,540,055		67.9%	0.0%
	\$10.00	13	137,680,340	20.4%		97,244,136		40,436,204		70.6%	0.5%
	\$20.00	8	118,988,520	17.7%		89,235,095		29,753,425		75.0%	0.2%
	\$50.00	3	31,239,500	4.6%		24,276,800		6,962,700		77.7%	0.0%
<b>Total</b>		<b>109</b>	<b>\$673,642,256</b>			<b>\$468,523,776</b>		<b>\$205,118,480</b>		<b>69.6%</b>	<b>0.9%</b>
2016	\$1.00	13	31,139,086	4.5%		18,886,277		12,252,809		60.7%	0.2%
thru	\$2.00	22	67,967,322	9.7%		44,234,154		23,733,168		65.1%	-0.6%
11/14/2015	\$3.00	9	61,897,974	8.9%		40,726,211		21,171,763		65.8%	-0.2%
	\$5.00	38	222,899,810	31.9%		151,432,894		71,466,916		67.9%	0.0%
	\$10.00	14	141,182,400	20.2%		98,928,111		42,254,289		70.1%	-0.3%
	\$20.00	9	138,553,100	19.8%		103,834,374		34,718,726		74.9%	0.0%
	\$50.00	3	34,594,050	5.0%		26,904,706		7,689,344		77.8%	0.0%
<b>Total</b>		<b>108</b>	<b>\$698,233,742</b>			<b>\$484,946,726</b>		<b>\$213,287,016</b>		<b>69.5%</b>	<b>0.0%</b>
Variance	\$1.00	-3	-3,100,291		-9.1%	-2,309,027	-10.9%	-791,264	-6.1%	-1.25%	
2015 to	\$2.00	-2	-2,597,326		-3.7%	-2,856,441	-6.1%	259,115	1.1%	-1.65%	
2014	\$3.00	-2	-5,300,367		-7.9%	-3,564,161	-8.0%	-1,736,206	-7.6%	-0.11%	
	\$5.00	4	9,168,280		4.3%	6,241,420	4.3%	2,926,860	4.3%	0.01%	
	\$10.00	1	3,502,060		2.5%	1,683,974	1.7%	1,818,086	4.5%	-0.56%	
	\$20.00	1	19,564,580		16.4%	14,599,279	16.4%	4,965,302	16.7%	-0.05%	
	\$50.00	0	3,354,550		10.7%	2,627,906	10.8%	726,644	10.4%	0.06%	
<b>Total</b>		<b>-1</b>	<b>\$24,591,486</b>		<b>3.7%</b>	<b>\$16,422,949</b>	<b>3.5%</b>	<b>\$8,168,537</b>	<b>4.0%</b>	<b>-0.10%</b>	

Notes - Scratch Ticket Variances

Texas Lottery Commission  
Scratch Tickets by Price Point  
Sales, Prize Expense, Sales Contribution and Payout Percentage With Year Over Year Changes  
Unaudited

			FY 2016		FY 2015	Difference
Sales	\$1 - \$5		\$383,904,192		\$385,733,896	-\$1,829,704
Prize Exp.	\$1 - \$5		\$255,279,536		\$257,767,745	-\$2,488,210
Sales Cont.	\$1 - \$5		\$128,624,656		\$127,966,151	\$658,506
Prize Exp. %	\$1 - \$5		66.5%		66.8%	-0.3%
			FY 2016		FY 2015	Difference
Sales	\$10 - \$50		\$314,329,550		\$287,908,360	\$26,421,190
Prize Exp.	\$10 - \$50		\$229,667,190		\$210,756,031	\$18,911,159
Sales Cont.	\$10 - \$50		\$84,662,360		\$77,152,329	\$7,510,031
Prize Exp. %	\$10 - \$50		73.1%		73.2%	-0.1%
			FY 2016		FY 2015	Difference
Sales	Scratch		\$698,233,742		\$673,642,256	\$24,591,486
Prize Exp.	Scratch		\$484,946,726		\$468,523,776	\$16,422,949
Sales Cont.	Scratch		\$213,287,016		\$205,118,480	\$8,168,537
Prize Exp. %	Scratch		69.5%		69.6%	-0.1%

			FY 2016		FY 2015	Difference
Sales	\$1 - \$10		\$525,086,592		\$523,414,236	\$1,672,356
Prize Exp.	\$1 - \$10		\$354,207,646		\$355,011,881	-\$804,235
Sales Cont.	\$1 - \$10		\$170,878,946		\$168,402,355	\$2,476,591
Prize Exp. %	\$1 - \$10		67.5%		67.8%	-0.4%
			FY 2016		FY 2015	Difference
Sales	\$20 - \$50		\$173,147,150		\$150,228,020	\$22,919,130
Prize Exp.	\$20 - \$50		\$130,739,080		\$113,511,895	\$17,227,185
Sales Cont.	\$20 - \$50		\$42,408,070		\$36,716,125	\$5,691,945
Prize Exp. %	\$20 - \$50		75.5%		75.6%	-0.1%
			FY 2016		FY 2015	Difference
Sales	Scratch		\$698,233,742		\$673,642,256	\$24,591,486
Prize Exp.	Scratch		\$484,946,726		\$468,523,776	\$16,422,949
Sales Cont.	Scratch		\$213,287,016		\$205,118,480	\$8,168,537
Prize Exp. %	Scratch		69.5%		69.6%	-0.1%



Texas Lottery Commission  
 Weekly Sales Summary  
 & Comparison to Previous Week  
 Unaudited

	Week Ending 11/14/2015		Week Ending 11/07/2015			
	<u>THIS WEEK</u>	% of Sales	<u>LAST WEEK</u>	% of Sales	<u>\$ change</u>	<u>% change</u>
Total Sales	<u>\$85,618,810</u>		<u>\$88,535,543</u>		<u>-\$2,916,733</u>	-3.29%
Scratch Tickets	<u>\$65,449,428</u>	76.4%	<u>\$68,137,192</u>	77.0%	<u>-\$2,687,764</u>	-3.94%
Lotto	\$2,185,621	2.6%	\$2,232,267	2.5%	-\$46,646	-2.09%
Lotto Extra	\$373,102	0.4%	\$379,508	0.4%	-\$6,406	-1.69%
Pick 3	\$4,726,211	5.5%	\$4,977,693	5.6%	-\$251,482	-5.05%
Pick 3 Sum It Up	\$93,030	0.1%	\$96,887	0.1%	-\$3,857	-3.98%
Cash Five	\$870,215	1.0%	\$891,111	1.0%	-\$20,896	-2.34%
Texas Two Step	\$1,087,101	1.3%	\$911,796	1.0%	\$175,305	19.23%
Mega Millions	\$4,139,462	4.8%	\$3,416,380	3.9%	\$723,082	21.17%
Megaplier	\$938,757	1.1%	\$795,028	0.9%	\$143,729	18.08%
Daily 4	\$1,614,727	1.9%	\$1,688,298	1.9%	-\$73,571	-4.36%
Daily 4 Sum It Up	\$82,536	0.1%	\$86,418	0.1%	-\$3,882	-4.49%
Powerball	\$2,437,413	2.8%	\$3,071,581	3.5%	-\$634,168	-20.65%
Power Play	\$357,760	0.4%	\$425,312	0.5%	-\$67,552	-15.88%
All or Nothing	\$574,596	0.7%	\$599,980	0.7%	-\$25,384	-4.23%
Texas Triple Chance	\$688,852	0.8%	\$826,093	0.9%	-\$137,241	-16.61%
Total Draw Game Sales	<u>\$20,169,382</u>		<u>\$20,398,351</u>		<u>-\$228,969</u>	-1.12%

\* Totals may not sum due to rounding.

Texas Lottery Commission  
Weekly Sales Summary  
Unaudited

SCRATCH TICKETS  
TOP TEN SELLING GAMES

For the week ending: 11/14/2015

Rank	Price Point	Game	Sales (Millions)
1	\$ 5	WILD 10'S	\$ 3.475
2	\$ 20	HOLIDAY GAME BOOK	\$ 3.371
3	\$ 10	HAPPY HOLIDAYS	\$ 3.185
4	\$ 20	100X THE CASH	\$ 3.151
5	\$ 10	CASHWORD MULTIPLIER	\$ 2.616
6	\$ 50	DIAMOND DOLLARS	\$ 2.434
7	\$ 20	\$1,000,000 INSTANT CASHOUT	\$ 2.414
8	\$ 3	TEXAS LOTERIA	\$ 2.263
9	\$ 5	HIGH ROLLER	\$ 2.256
10	\$ 3	BONUS CASHWORD	\$ 2.256

Texas Lottery Commission  
Prize Payout Tracking Report  
Unaudited

Through the week ending: 11/14/2015

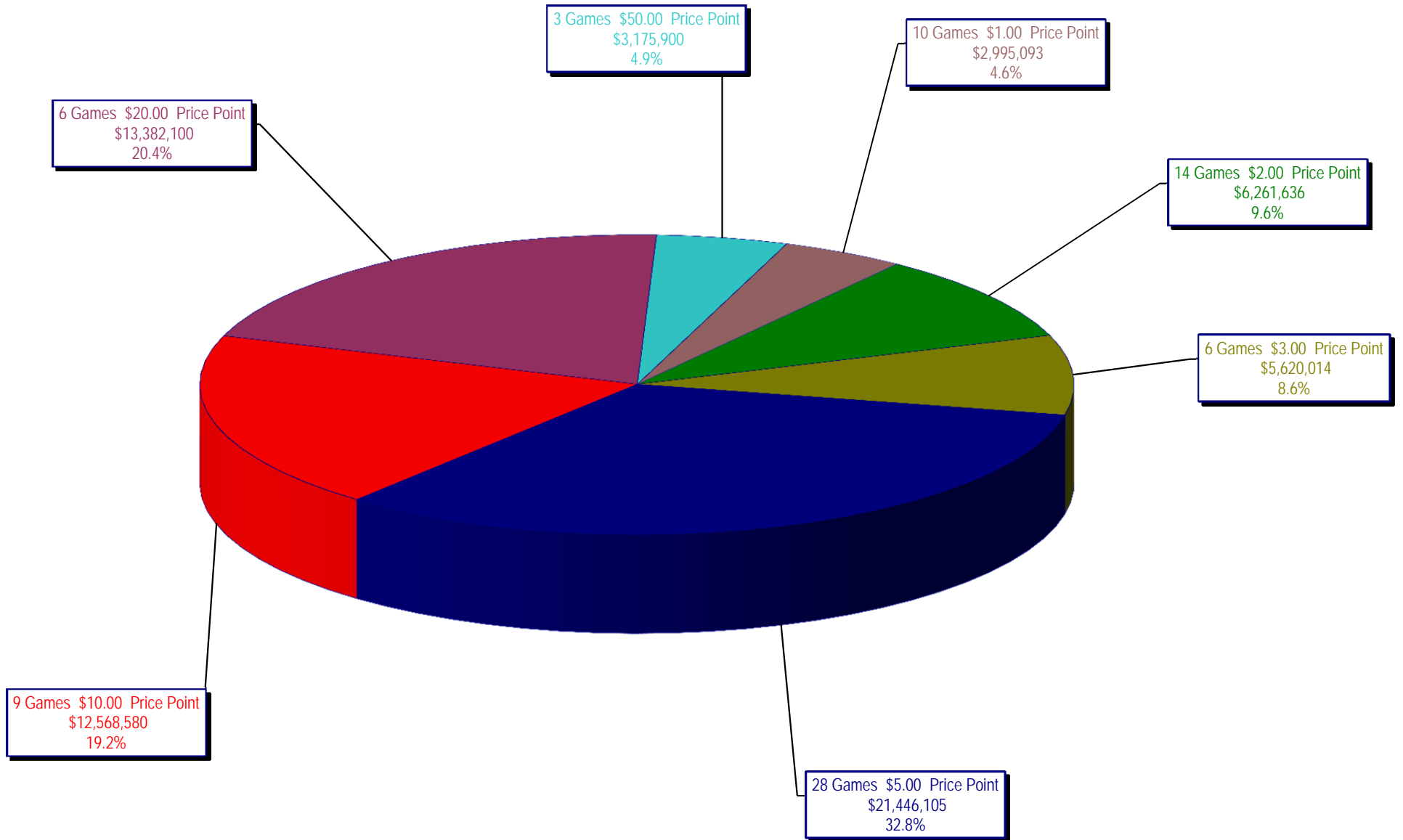
Draw Game Sales

		FY Sales Through Week Ending 11/14/2015		FY Prize Expense Through Week Ending 11/14/2015	Actual* Prize Payout	Base Payout (Prize Pool)
Lotto	\$	26,973,904	\$	19,398,070	71.91%	50.00%
Lotto Extra		4,530,989		2,260,766	49.90%	53.70%
Pick 3		52,022,944		25,966,030	49.91%	50.00%
Pick 3 Sum It Up		1,056,576		561,409	53.13%	50.00%
Cash Five		9,706,810		4,853,522	50.00%	50.00%
Texas Two Step		11,340,459		5,775,722	50.93%	50.00%
Mega Millions		27,790,553		14,324,930	51.55%	50.00%**
Megaplier		6,845,091		3,458,154	50.52%	N/A
Daily 4		17,696,930		7,985,275	45.12%	50.00%
Daily 4 Sum It Up		915,968		316,703	34.58%	50.00%
Powerball		43,851,379		22,140,611	50.49%	50.00%**
Power Play		5,661,254		2,858,654	50.50%	N/A
All or Nothing		6,591,004		3,580,492	54.32%	55.98%
Texas Triple Chance		5,256,855		3,278,006	62.36%	50.00%
<b>Totals</b>	\$	<b>220,240,716</b>	\$	<b>116,758,344</b>	<b>53.01%</b>	

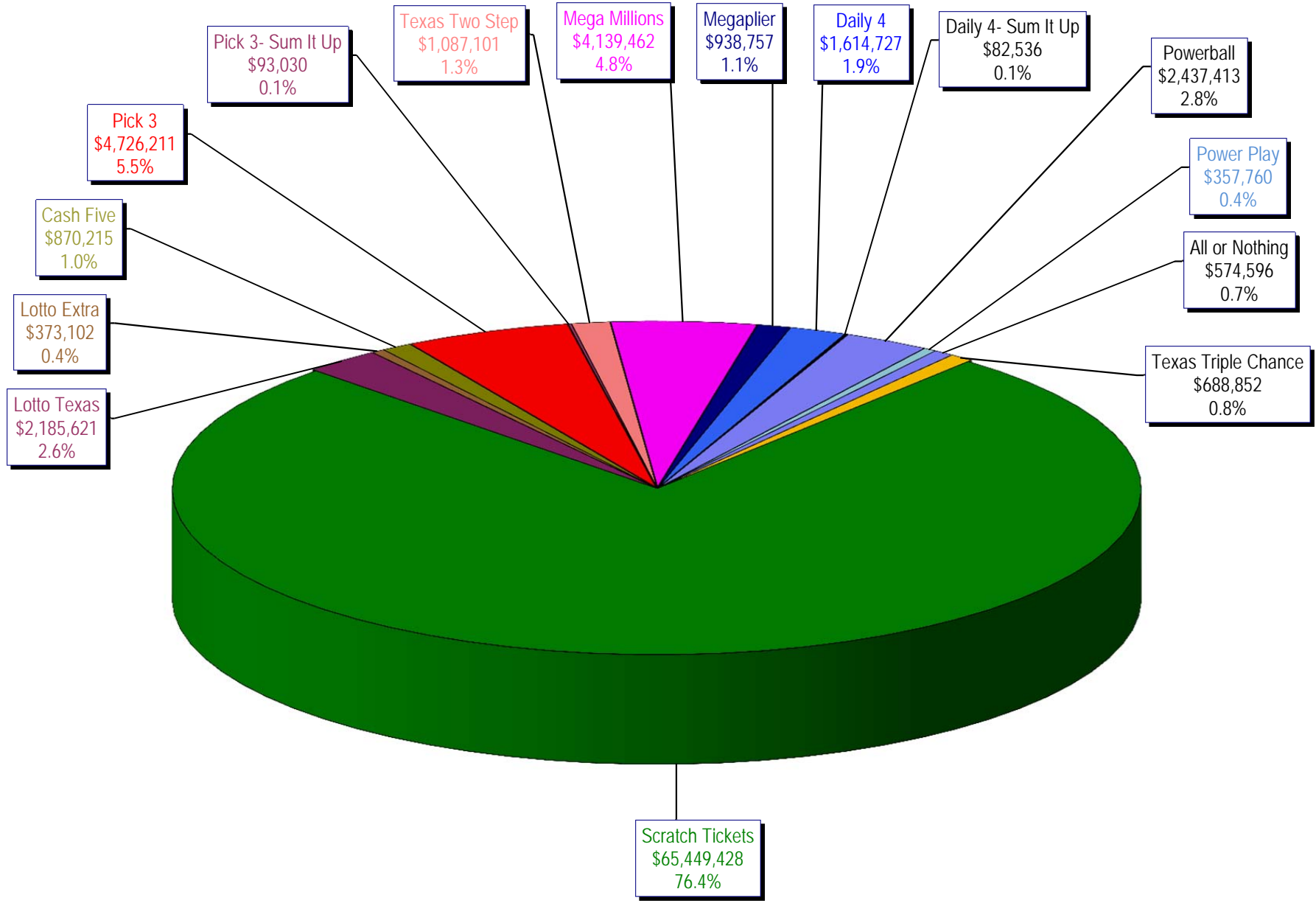
\* Before Unclaimed Prizes

\*\* Estimated; depends on # of guaranteed prizes won in Texas

Texas Lottery Commission  
Scratch Ticket Sales  
For the week ending 11/14/15  
(Unaudited)



**Texas Lottery Commission**  
**All Game Sales**  
**For the week ending 11/14/15**  
**(Unaudited)**



Texas Lottery Commission - Weekly Sales Summary for FY 2016 (Unaudited)

Week Ended	Scratch Tickets	New Games & Dates	Lotto Texas	Jackpot W	S	Lotto Extra	Pick 3	Pick 3 Sum It Up	Cash Five	Texas Two Step	Jackpot M	TH	Mega Millions	Jackpot T	F	Megaplier	Daily 4	Daily 4 Sum It Up	Powerball	Jackpot W	S	Power Play	All or Nothing	Monopoly	Jackpot F	Texas Triple Chance	Total	Per Cap.
9/5/2015*	66,843,870	0	2,788,509	25	26	466,121	5,249,348	117,979	956,126	1,253,100	425	575	2,366,640	74	85	608,901	1,725,027	93,067	3,586,482	120	133	484,769	675,614	0		87,215,551	3.24	
9/12/2015	61,566,291	1717 (\$1.N); 1718 (\$5.N); 1748 (\$10.N); 1696 (\$3.N) - 9/08/15	2,793,426	26.5	27.75	465,451	4,974,238	103,203	919,536	1,423,604	725	950	2,511,039	95	106	629,091	1,641,226	86,539	3,927,126	149	167	518,060	638,384	0		82,197,213	3.05	
9/19/2015	63,530,657	0	2,845,557	28.25	29.5	475,307	4,715,566	95,242	928,275	854,109	200	225	1,817,155	15	20	487,946	1,647,829	81,483	5,082,782	185	208	639,614	656,388	0		83,857,910	3.11	
9/26/2015	61,731,400	1720 (\$2.N); 1721 (\$5.N); 1715 (\$5.N) - 9/21/15	2,815,638	30	30.75	468,584	4,735,629	97,118	924,334	1,048,752	300	450	1,860,438	25	31	499,201	1,628,350	82,200	6,648,092	235	267	790,427	653,528	0		83,983,690	3.12	
10/3/2015	67,048,415	0	3,034,763	31.5	32.25	502,043	4,925,789	100,522	919,217	1,347,552	600	725	2,053,673	39	47	539,290	1,662,320	88,291	8,036,576	301	40	884,785	616,594	0	725,376	92,485,206	3.43	
10/10/2015	66,049,706	1722 (\$1.N); 1723 (\$5.N); 1711 (\$20.N) - 10/05/15	2,175,801	5	5.25	366,506	4,803,855	97,005	899,614	1,141,865	925	200	2,113,720	55	65	535,411	1,636,542	86,150	2,572,748	50	60	372,480	593,616	0	743,664	84,188,683	3.12	
10/17/2015	65,073,593	0	2,133,286	5	5	358,076	4,629,752	92,453	876,040	824,622	200	225	2,286,703	75	84	568,477	1,576,323	79,576	2,638,956	70	80	377,157	580,870	0	754,124	82,850,007	3.07	
10/24/2015	64,087,437	1724 (\$2.N); 1768 (\$5.N); 1726 (\$10.N) - 10/19/15	2,099,176	5.25	5.5	358,217	4,515,381	92,071	860,960	991,931	300	425	2,600,946	93	105	626,019	1,553,788	80,225	2,946,077	90	100	411,192	562,378	0	752,104	82,537,901	3.06	
10/31/2015	66,025,374	0	2,165,101	5.75	6	368,559	4,653,961	91,360	873,751	944,275	550	200	2,945,749	117	129	695,705	1,621,009	85,560	3,327,954	110	127	455,266	573,258	0	766,642	85,593,524	3.18	
11/7/2015	68,137,192	1727 (\$1.N); 1728 (\$2.N); 1729 (\$5.N) - 11/02/15	2,232,267	6.25	6.5	379,508	4,977,693	96,887	891,111	911,796	225	300	3,416,380	144	164	795,028	1,688,298	86,418	3,071,581	142	40	425,312	599,980	0	826,093	88,535,543	3.28	
11/14/2015	65,449,428	0	2,185,621	6.75	7	373,102	4,726,211	93,030	870,215	1,087,101	425	575	4,139,462	180	200	938,757	1,614,727	82,536	2,437,413	50	60	357,760	574,596	0	688,852	85,618,810	3.18	
weekly change	-3.9%		-2.1%			-1.7%	-5.1%	-4.0%	-2.3%	19.2%		21.2%			18.1%	-4.4%	-4.5%	-20.6%			-15.9%	-4.2%	0.0%		-16.6%	-3.3%		
	<b>SALES</b>		<b>SALES</b>			<b>SALES</b>	<b>SALES</b>	<b>SALES</b>	<b>SALES</b>	<b>SALES</b>	<b>SALES</b>	<b>SALES</b>	<b>SALES</b>	<b>SALES</b>	<b>SALES</b>	<b>SALES</b>	<b>SALES</b>	<b>SALES</b>	<b>SALES</b>	<b>SALES</b>	<b>SALES</b>	<b>SALES</b>	<b>SALES</b>	<b>SALES</b>	<b>SALES</b>	<b>SALES</b>	<b>SALES</b>	<b>% of Sales</b>
Calendar Year to date	3,066,273,479		109,629,523			17,993,854	220,203,617	4,663,831	43,318,143	48,261,991		122,501,787			29,900,509	76,098,561	4,193,041	188,526,188		24,001,592	31,306,282	(390)			5,256,855	3,992,128,863	100.0%	
Fiscal Year to date 2016	698,233,742		26,973,904			4,530,989	52,022,944	1,056,576	9,706,810	11,340,459		27,790,553			6,845,091	17,696,930	915,968	43,851,379		5,661,254	6,591,004	0			5,256,855	918,474,458	100.0%	
*Full week includes 2 days from FY15																												