



*WEEKLY SALES SUMMARY*

Unaudited

**Week Ending: 11/19/2016**

Texas Lottery Commission  
Fiscal Year to Date Sales Comparison  
Unaudited

Through the Week Ending 11/19/2016 (12 Weeks)

Sales by Game	FY 2015 *	FY 2016 **	FY 2017	\$ Change		% Change	
				FY 2017 to FY 2015	FY 2017 to FY 2016	FY 2017 to FY 2015	FY 2017 to FY 2016
Scratch Tickets	\$ 739,995,839	\$ 766,598,163	\$ 796,667,245	\$ 56,671,406	\$ 30,069,082	7.7%	3.9%
Lotto Texas	27,305,548	29,147,761	24,566,782	-2,738,766	-4,580,979	-10.0%	-15.7%
Lotto Extra	4,114,527	4,900,508	4,679,378	564,851	-221,130	13.7%	-4.5%
Pick 3	56,412,460	56,697,237	53,573,823	-2,838,637	-3,123,414	-5.0%	-5.5%
Pick 3 Sum It Up	1,085,210	1,145,564	1,026,393	-58,818	-119,171	-5.4%	-10.4%
Cash Five	11,326,699	10,569,440	9,620,521	-1,706,178	-948,919	-15.1%	-9.0%
Texas Two Step	13,135,689	12,165,513	11,362,312	-1,773,377	-803,201	-13.5%	-6.6%
Mega Millions	37,929,832	29,621,462	23,071,901	-14,857,931	-6,549,561	-39.2%	-22.1%
Megaplier	8,523,410	7,334,576	6,337,935	-2,185,475	-996,641	-25.6%	-13.6%
Daily 4	18,872,652	19,329,025	19,841,060	968,408	512,035	5.1%	2.6%
Daily 4 Sum It Up	1,140,665	998,045	1,041,743	-98,922	43,699	-8.7%	4.4%
Powerball	41,361,975	46,405,286	48,556,981	7,195,006	2,151,695	17.4%	4.6%
Power Play	5,347,897	6,031,848	6,839,884	1,491,987	808,036	27.9%	13.4%
All or Nothing	9,066,210	7,177,352	6,401,388	-2,664,822	-775,964	-29.4%	-10.8%
Monopoly	1,851,850	-	-	-1,851,850	-	-100.0%	-
Texas Triple Chance	-	5,891,705	3,566,226	3,566,226	-2,325,479	-	-39.5%
<b>Total</b>	<b>\$ 977,470,463</b>	<b>\$ 1,004,013,484</b>	<b>\$ 1,017,153,571</b>	<b>\$ 39,683,109</b>	<b>\$ 13,140,087</b>	<b>4.1%</b>	<b>1.3%</b>

\* 3 extra days

\*\* 2 extra days

Texas Lottery Commission  
 Fiscal Year to Date Cumulative Average Sales Comparison  
 Unaudited

Through the Week Ending 11/19/2016 (12 Weeks)

Sales by Game	FY 2015	FY 2016	FY 2017
Scratch Tickets	\$ 8,915,613	\$ 9,348,758	\$ 9,958,341
Lotto Texas	328,983	355,461	307,085
Lotto Extra	49,573	59,762	58,492
Pick 3	679,668	691,430	669,673
Pick 3 Sum It Up	13,075	13,970	12,830
Cash Five	136,466	128,896	120,257
Texas Two Step	158,261	148,360	142,029
Mega Millions	456,986	361,237	288,399
Megaplier	102,692	89,446	79,224
Daily 4	227,381	235,720	248,013
Daily 4 Sum It Up	13,743	12,171	13,022
Powerball	498,337	565,918	606,962
Power Play	64,432	73,559	85,499
All or Nothing	109,231	87,529	80,017
Monopoly	** 52,910	-	-
Texas Triple Chance	- *	105,209	44,578
<b>Total</b>	<b>\$ 11,807,351</b>	<b>\$ 12,277,426</b>	<b>\$ 12,714,420</b>

	thru 11/22/2014	thru 11/21/2015	thru 11/19/2016
	83 days	82 days	80 days
**	35 days	* 56 days	

Texas Lottery Commission  
Fiscal Year Over Year Change in Sales  
Unaudited  
FY 2017 Compared to FY 2016

			SCRATCH TICKETS				DRAW GAMES				TOTAL SALES			
FY 2017			FY 2017	FY 2016	Difference	% change - Cumulative Sales	FY 2017	FY 2016	Difference	% change - Cumulative Sales	FY 2017	FY 2016	Difference	% change - Cumulative Sales
Week	Week Ending													
1	9/3/2016 *		\$32,980,266	\$49,534,249	(\$16,553,983)	-33.4%	\$10,218,656	\$17,091,724	(\$6,873,068)	-40.2%	\$43,198,922	\$66,625,973	(\$23,427,051)	-35.2%
2	9/10/2016		\$65,952,418	\$61,566,291	\$4,386,127	7.1%	\$19,635,377	\$20,630,922	(\$995,545)	-4.8%	\$85,587,795	\$82,197,213	\$3,390,583	4.1%
3	9/17/2016		\$66,196,270	\$63,530,657	\$2,665,613	4.2%	\$20,915,290	\$20,327,253	\$588,037	2.9%	\$87,111,560	\$83,857,910	\$3,253,650	3.9%
4	9/24/2016		\$64,383,005	\$61,731,400	\$2,651,605	4.3%	\$17,451,165	\$22,252,290	(\$4,801,125)	-21.6%	\$81,834,170	\$83,983,690	(\$2,149,520)	-2.6%
5	10/1/2016		\$67,349,951	\$67,048,415	\$301,536	0.4%	\$17,519,852	\$25,436,791	(\$7,916,939)	-31.1%	\$84,869,803	\$92,485,206	(\$7,615,403)	-8.2%
6	10/8/2016		\$71,598,690	\$66,049,706	\$5,548,984	8.4%	\$18,211,107	\$18,138,977	\$72,130	0.4%	\$89,809,797	\$84,188,683	\$5,621,114	6.7%
7	10/15/2016		\$69,444,762	\$65,073,593	\$4,371,169	6.7%	\$18,075,261	\$17,776,414	\$298,847	1.7%	\$87,520,023	\$82,850,007	\$4,670,016	5.6%
8	10/22/2016		\$69,317,066	\$64,087,437	\$5,229,629	8.2%	\$18,422,336	\$18,450,464	(\$28,128)	-0.2%	\$87,739,402	\$82,537,901	\$5,201,501	6.3%
9	10/29/2016		\$69,729,599	\$66,025,374	\$3,704,225	5.6%	\$18,535,248	\$19,568,150	(\$1,032,902)	-5.3%	\$88,264,847	\$85,593,524	\$2,671,324	3.1%
10	11/5/2016		\$73,451,702	\$68,137,192	\$5,314,510	7.8%	\$20,151,939	\$20,398,351	(\$246,413)	-1.2%	\$93,603,641	\$88,535,543	\$5,068,098	5.7%
11	11/12/2016		\$70,998,320	\$65,449,428	\$5,548,892	8.5%	\$19,925,460	\$20,169,382	(\$243,923)	-1.2%	\$90,923,780	\$85,618,810	\$5,304,970	6.2%
12	11/19/2016		\$75,265,196	\$68,364,421	\$6,900,775	10.1%	\$21,424,637	\$17,174,606	\$4,250,031	24.7%	\$96,689,833	\$85,539,027	\$11,150,806	13.0%
13	11/26/2016			\$61,091,628				\$17,168,993				\$78,260,621		
14	12/3/2016			\$67,830,827				\$19,252,418				\$87,083,245		
15	12/10/2016			\$68,324,452				\$19,529,408				\$87,853,860		
16	12/17/2016			\$71,041,258				\$20,824,840				\$91,866,098		
17	12/24/2016			\$78,125,965				\$22,586,417				\$100,712,382		
18	12/31/2016			\$76,712,975				\$27,972,880				\$104,685,855		
19	1/7/2017			\$77,136,541				\$127,289,478				\$204,426,019		
20	1/14/2017			\$73,858,865				\$140,104,126				\$213,962,991		
21	1/21/2017			\$70,665,700				\$20,781,745				\$91,447,445		
22	1/28/2017			\$71,051,685				\$20,433,401				\$91,485,086		
23	2/4/2017			\$78,458,428				\$21,274,800				\$99,733,228		
24	2/11/2017			\$80,754,850				\$21,391,919				\$102,146,769		
25	2/18/2017			\$80,078,271				\$21,911,382				\$101,989,653		
26	2/25/2017			\$78,832,217				\$22,823,086				\$101,655,303		
27	3/4/2017			\$80,019,524				\$23,146,906				\$103,166,430		
28	3/11/2017			\$78,524,214				\$19,311,625				\$97,835,839		
29	3/18/2017			\$75,446,960				\$18,001,000				\$93,447,960		
30	3/25/2017			\$75,293,759				\$18,553,964				\$93,847,723		
31	4/1/2017			\$79,316,221				\$19,482,563				\$98,798,784		
32	4/8/2017			\$74,560,898				\$20,100,629				\$94,661,527		
33	4/15/2017			\$74,056,586				\$20,677,413				\$94,733,999		
34	4/22/2017			\$73,110,080				\$20,313,339				\$93,423,419		
35	4/29/2017			\$73,448,019				\$22,666,626				\$96,114,645		
36	5/6/2017			\$77,593,399				\$33,262,968				\$110,856,367		
37	5/13/2017			\$75,263,676				\$20,250,149				\$95,513,825		
38	5/20/2017			\$74,274,808				\$19,605,983				\$93,880,791		
39	5/27/2017			\$71,562,728				\$20,150,232				\$91,712,960		
40	6/3/2017			\$73,085,109				\$21,067,550				\$94,152,659		
41	6/10/2017			\$70,593,768				\$21,389,794				\$91,983,562		
42	6/17/2017			\$69,501,864				\$22,402,713				\$91,904,577		

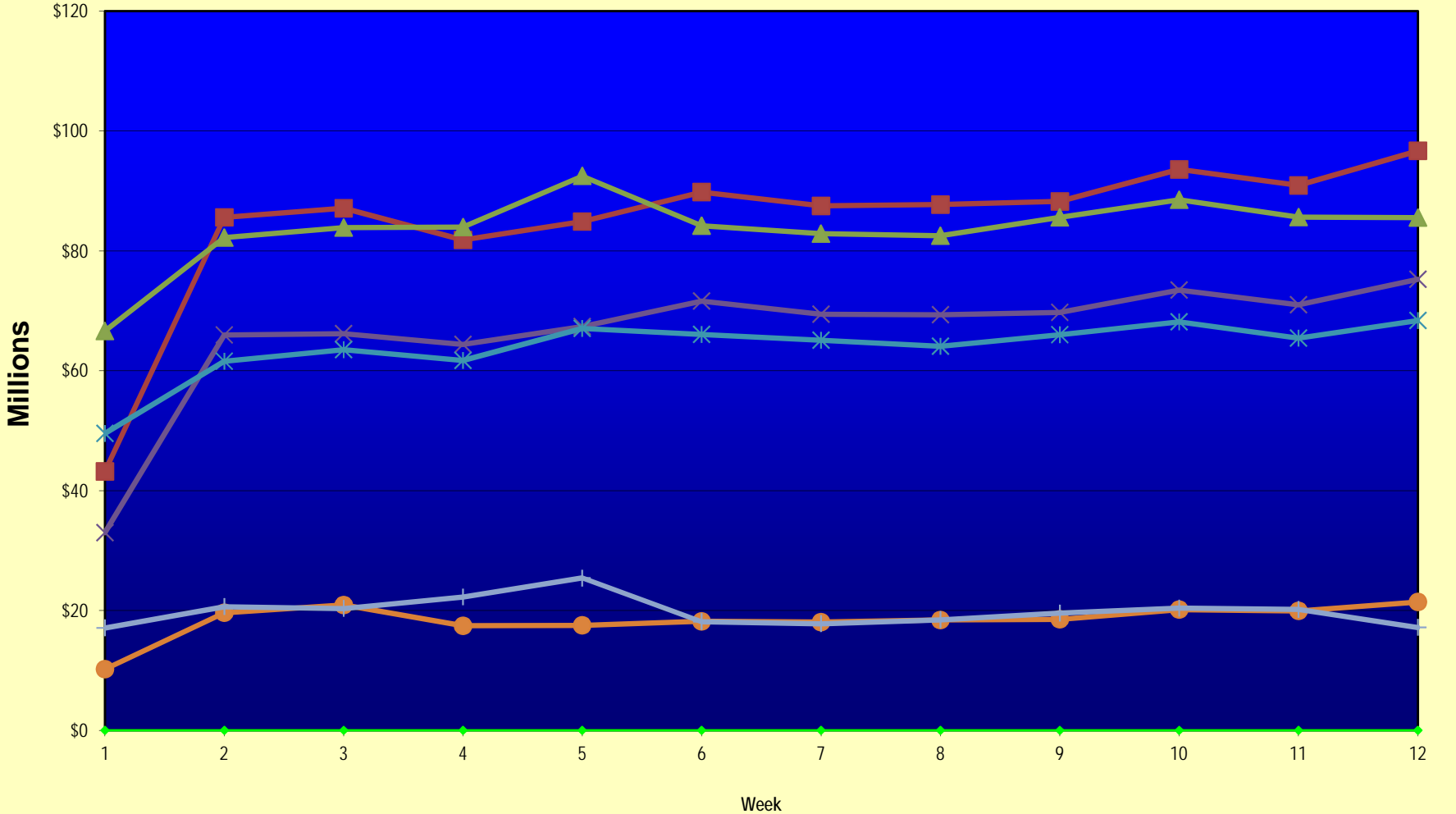
Texas Lottery Commission  
Fiscal Year Over Year Change in Sales  
Unaudited  
FY 2017 Compared to FY 2016

			SCRATCH TICKETS				DRAW GAMES				TOTAL SALES			
FY 2017			FY 2017	FY 2016	Difference	% change - Cumulative Sales	FY 2017	FY 2016	Difference	% change - Cumulative Sales	FY 2017	FY 2016	Difference	% change - Cumulative Sales
Week	Week	Ending												
43	6/24/2017			\$69,243,660				\$24,290,311				\$93,533,971		
44	7/1/2017			\$70,782,313				\$29,331,406				\$100,113,719		
45	7/8/2017			\$67,636,625				\$38,673,314				\$106,309,939		
46	7/15/2017			\$68,064,720				\$21,311,938				\$89,376,658		
47	7/22/2017			\$69,509,821				\$21,982,689				\$91,492,510		
48	7/29/2017			\$64,486,970				\$30,699,953				\$95,186,923		
49	8/5/2017			\$69,206,183				\$18,277,075				\$87,483,258		
50	8/12/2017			\$67,165,060				\$18,101,640				\$85,266,700		
51	8/19/2017			\$69,067,938				\$18,981,681				\$88,049,619		
52	8/26/2017			\$67,821,162				\$19,606,571				\$87,427,733		
	8/31/2017 **			\$36,609,542				\$9,310,254				\$45,919,796		
Total thru Current Week			\$796,667,245	\$766,598,163	\$30,069,082	3.9%	\$220,486,326	\$237,415,321	(\$16,928,995)	-7.1%	\$1,017,153,571	\$1,004,013,484	\$13,140,087	1.3%
Fiscal Year Total			\$796,667,245	\$3,715,807,432			\$220,486,326	\$1,351,710,491			\$1,017,153,571	\$5,067,517,923		

\* FY 17 includes 3 days; FY 16 includes 5 days

\*\* FY 17 includes 5 days; FY 16 includes 4 days

### Texas Lottery Commission Fiscal Year Over Year Change in Sales



◆ Week   
 ■ Total Sales 2017   
 ▲ Total Sales 2016   
 × Scratch Tickets 2017   
 ✱ Scratch Tickets 2016   
 ● Draw Games 2017   
 + Draw Games 2016

Note: Week 1 is not a full week of sales as this report is prepared on a Fiscal Year basis.

Texas Lottery Commission  
Scratch Tickets by Price Point  
Sales, Prize Expense, Sales Contribution and Payout Percentage With Year Over Year Changes  
Unaudited

Fiscal Year	Price Point	# of Active Games	FY Sales	% of Scratch Ticket Sales	Year over Year Change in Sales	FY Prize Expense	Year over Year Change in Prize Expense	FY Sales Contribution	Year over Year Change in Contribution	Average Prize Payout %	Year over Year Change in Payout %
2016	\$1.00	13	34,132,926	4.5%		20,682,204		13,450,722		60.6%	0.1%
Through	\$2.00	25	74,778,716	9.8%		48,658,047		26,120,669		65.1%	-0.7%
11/21/2015	\$3.00	9	67,503,741	8.8%		44,415,716		23,088,025		65.8%	-0.2%
	\$5.00	39	244,857,680	31.9%		166,350,073		78,507,607		67.9%	0.0%
	\$10.00	14	154,372,470	20.1%		108,167,564		46,204,906		70.1%	-0.3%
	\$20.00	9	152,979,180	20.0%		114,645,497		38,333,683		74.9%	0.0%
	\$50.00	3	37,973,450	5.0%		29,533,080		8,440,370		77.8%	0.0%
<b>Total</b>		<b>112</b>	<b>\$766,598,163</b>			<b>\$532,452,182</b>		<b>\$234,145,981</b>		<b>69.5%</b>	<b>0.0%</b>
2017	\$1.00	17	31,554,253	4.0%		19,145,557		12,408,696		60.7%	0.7%
Through	\$2.00	22	67,986,308	8.5%		44,332,846		23,653,462		65.2%	0.0%
11/19/2016	\$3.00	8	54,867,414	6.9%		36,170,728		18,696,686		65.9%	0.1%
	\$5.00	39	252,360,090	31.7%		171,448,357		80,911,733		67.9%	0.0%
	\$10.00	15	158,358,480	19.9%		111,931,181		46,427,299		70.7%	0.7%
	\$20.00	10	192,620,300	24.2%		144,331,679		48,288,621		74.9%	0.0%
	\$50.00	4	38,920,400	4.9%		30,286,377		8,634,023		77.8%	0.0%
<b>Total</b>		<b>115</b>	<b>\$796,667,245</b>			<b>\$557,646,725</b>		<b>\$239,020,520</b>		<b>70.0%</b>	<b>0.6%</b>
Variance	\$1.00	4	-2,578,673		-7.6%	-1,536,647	-7.4%	-1,042,026	-7.7%	0.08%	
2017 to	\$2.00	-3	-6,792,408		-9.1%	-4,325,201	-8.9%	-2,467,207	-9.4%	0.14%	
2016	\$3.00	-1	-12,636,327		-18.7%	-8,244,988	-18.6%	-4,391,339	-19.0%	0.13%	
	\$5.00	0	7,502,410		3.1%	5,098,284	3.1%	2,404,126	3.1%	0.00%	
	\$10.00	1	3,986,010		2.6%	3,763,617	3.5%	222,393	0.5%	0.61%	
	\$20.00	1	39,641,120		25.9%	29,686,182	25.9%	9,954,938	26.0%	-0.01%	
	\$50.00	1	946,950		2.5%	753,297	2.6%	193,653	2.3%	0.04%	
<b>Total</b>		<b>3</b>	<b>\$30,069,082</b>		<b>3.9%</b>	<b>\$25,194,543</b>	<b>4.7%</b>	<b>\$4,874,539</b>	<b>2.1%</b>	<b>0.54%</b>	

Notes - Scratch Ticket Variances

Texas Lottery Commission  
Scratch Tickets by Price Point  
Sales, Prize Expense, Sales Contribution and Payout Percentage With Year Over Year Changes  
Unaudited

			FY 2017		FY 2016	Difference
Sales	\$1 - \$5		\$406,768,065		\$421,273,063	-\$14,504,998
Prize Exp.	\$1 - \$5		\$271,097,488		\$280,106,041	-\$9,008,553
Sales Cont.	\$1 - \$5		\$135,670,577		\$141,167,022	-\$5,496,445
Prize Exp. %	\$1 - \$5		66.6%		66.5%	0.2%
			FY 2017		FY 2016	Difference
Sales	\$10 - \$50		\$389,899,180		\$345,325,100	\$44,574,080
Prize Exp.	\$10 - \$50		\$286,549,238		\$252,346,141	\$34,203,096
Sales Cont.	\$10 - \$50		\$103,349,942		\$92,978,959	\$10,370,984
Prize Exp. %	\$10 - \$50		73.5%		73.1%	0.4%
			FY 2017		FY 2016	Difference
Sales	Scratch		\$796,667,245		\$766,598,163	\$30,069,082
Prize Exp.	Scratch		\$557,646,725		\$532,452,182	\$25,194,543
Sales Cont.	Scratch		\$239,020,520		\$234,145,981	\$4,874,539
Prize Exp. %	Scratch		70.0%		69.5%	0.5%

			FY 2017		FY 2016	Difference
Sales	\$1 - \$10		\$565,126,545		\$575,645,533	-\$10,518,988
Prize Exp.	\$1 - \$10		\$383,028,669		\$388,273,605	-\$5,244,936
Sales Cont.	\$1 - \$10		\$182,097,876		\$187,371,928	-\$5,274,052
Prize Exp. %	\$1 - \$10		67.8%		67.5%	0.3%
			FY 2017		FY 2016	Difference
Sales	\$20 - \$50		\$231,540,700		\$190,952,630	\$40,588,070
Prize Exp.	\$20 - \$50		\$174,618,056		\$144,178,577	\$30,439,479
Sales Cont.	\$20 - \$50		\$56,922,644		\$46,774,053	\$10,148,591
Prize Exp. %	\$20 - \$50		75.4%		75.5%	-0.1%
			FY 2017		FY 2016	Difference
Sales	Scratch		\$796,667,245		\$766,598,163	\$30,069,082
Prize Exp.	Scratch		\$557,646,725		\$532,452,182	\$25,194,543
Sales Cont.	Scratch		\$239,020,520		\$234,145,981	\$4,874,539
Prize Exp. %	Scratch		70.0%		69.5%	0.5%



Texas Lottery Commission  
**Weekly Sales Summary**  
**& Comparison to Previous Week**  
 Unaudited

	Week Ending 11/19/2016	% of Sales	Week Ending 11/12/2016	% of Sales	\$ change	% change
	<u>THIS WEEK</u>		<u>LAST WEEK</u>			
Total Sales	<u>\$96,689,833</u>		<u>\$90,923,780</u>		<u>\$5,766,053</u>	6.34%
Scratch Tickets	<u>\$75,265,196</u>	77.8%	<u>\$70,998,320</u>	78.1%	<u>\$4,266,876</u>	6.01%
Lotto	\$1,924,291	2.0%	\$1,893,513	2.1%	\$30,778	1.63%
Lotto Extra	\$376,977	0.4%	\$368,470	0.4%	\$8,507	2.31%
Pick 3	\$4,595,331	4.8%	\$4,642,196	5.1%	-\$46,866	-1.01%
Pick 3 Sum It Up	\$87,939	0.1%	\$89,581	0.1%	-\$1,642	-1.83%
Cash Five	\$830,211	0.9%	\$833,195	0.9%	-\$2,984	-0.36%
Texas Two Step	\$1,078,765	1.1%	\$869,408	1.0%	\$209,357	24.08%
Mega Millions	\$2,072,033	2.1%	\$1,964,313	2.2%	\$107,720	5.48%
Megaplier	\$567,597	0.6%	\$541,639	0.6%	\$25,958	4.79%
Daily 4	\$1,715,227	1.8%	\$1,741,306	1.9%	-\$26,079	-1.50%
Daily 4 Sum It Up	\$91,335	0.1%	\$90,176	0.1%	\$1,159	1.29%
Powerball	\$6,391,094	6.6%	\$5,313,351	5.8%	\$1,077,743	20.28%
Power Play	\$836,372	0.9%	\$715,597	0.8%	\$120,775	16.88%
All or Nothing	\$557,058	0.6%	\$563,280	0.6%	-\$6,222	-1.10%
Texas Triple Chance	\$300,408	0.3%	\$299,436	0.3%	\$972	0.32%
Total Draw Game Sales	<u>\$21,424,637</u>		<u>\$19,925,460</u>		<u>\$1,499,177</u>	7.52%

\* Totals may not sum due to rounding.

Texas Lottery Commission  
Weekly Sales Summary  
Unaudited

SCRATCH TICKETS  
TOP TEN SELLING GAMES

For the week ending: 11/19/2016

Rank	Price Point	Game	Sales (Millions)
1	\$ 10	HOLIDAY COUNTDOWN SUPER TICKET	\$ 4.774
2	\$ 20	SUPER BREAK THE BANK	\$ 3.740
3	\$ 20	100X THE CASH	\$ 3.585
4	\$ 5	SUPER LOTERIA	\$ 3.351
5	\$ 50	\$7,500,000 ULTIMATE CASH	\$ 3.115
6	\$ 5	GOLDEN TICKET	\$ 2.986
7	\$ 10	\$200 MILLION PAYOUT	\$ 2.982
8	\$ 10	CASHWORD MULTIPLIER	\$ 2.885
9	\$ 5	GARLAND RICHES	\$ 2.488
10	\$ 10	CASINO CASH	\$ 2.314

Texas Lottery Commission  
Prize Payout Tracking Report  
Unaudited

Through the week ending: 11/19/16

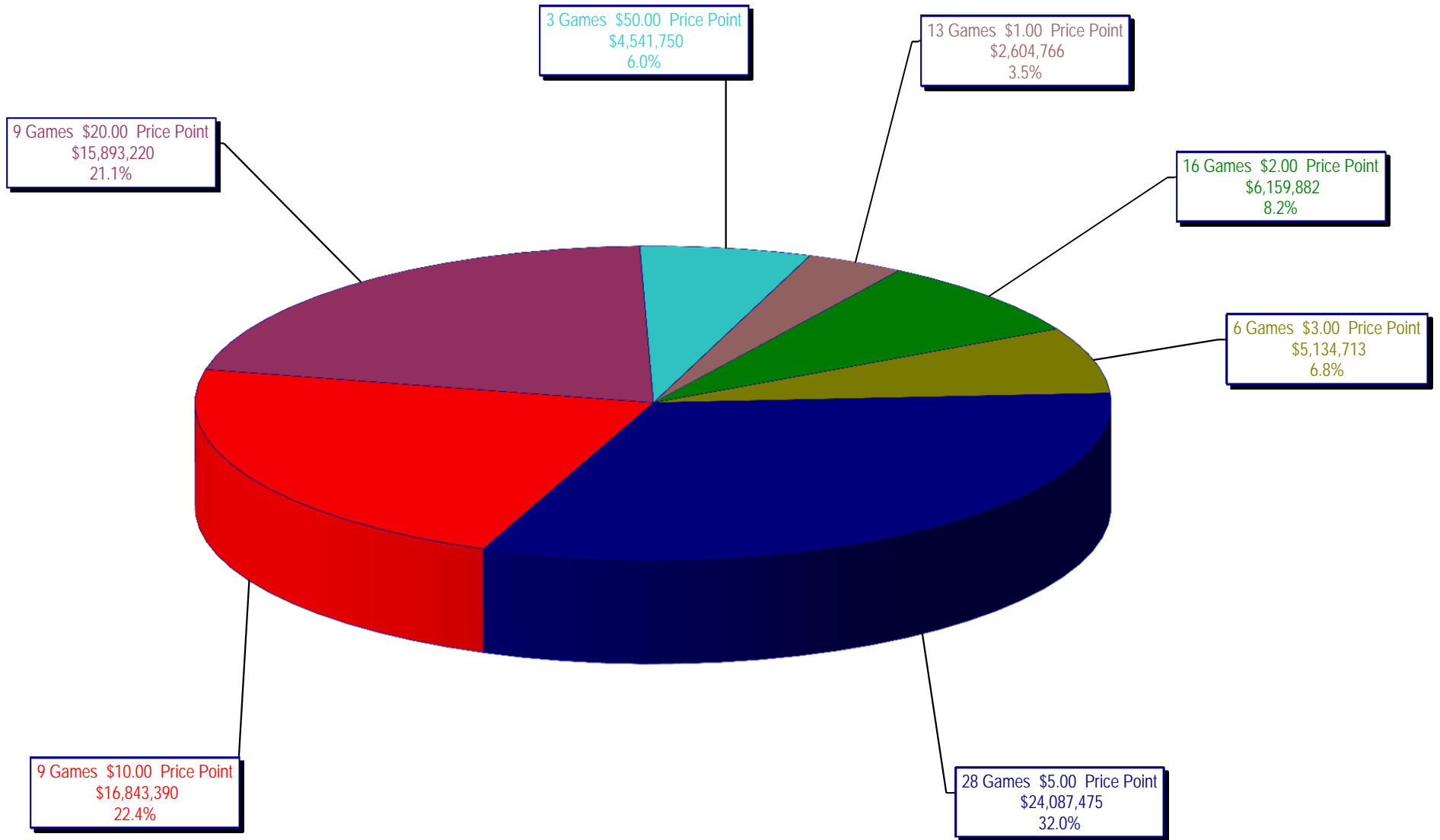
Draw Game Sales

		FY Sales Through Week Ending 11/19/2016		FY Prize Expense Through Week Ending 11/19/2016	Actual* Prize Payout	Base Payout (Prize Pool)
Lotto	\$	24,566,782	\$	12,284,475	50.00%	50.00%
Lotto Extra		4,679,378		2,578,778	55.11%	53.70%
Pick 3		53,573,823		26,067,210	48.66%	50.00%
Pick 3 Sum It Up		1,026,393		501,005	48.81%	50.00%
Cash Five		9,620,521		4,810,323	50.00%	50.00%
Texas Two Step		11,362,312		6,001,587	52.82%	50.00%
Mega Millions		23,071,901		11,804,265	51.16%	50.00%**
Megaplier		6,337,935		3,176,832	50.12%	N/A
Daily 4		19,841,060		8,388,825	42.28%	50.00%
Daily 4 Sum It Up		1,041,743		470,604	45.17%	50.00%
Powerball		48,556,981		24,281,917	50.01%	50.00%**
Power Play		6,839,884		3,421,996	50.03%	N/A
All or Nothing		6,401,388		3,562,736	55.66%	55.98%
Texas Triple Chance		3,566,226		1,824,001	51.15%	54.42%
<b>Totals</b>	\$	<b>220,486,326</b>	\$	<b>109,174,552</b>	<b>49.52%</b>	

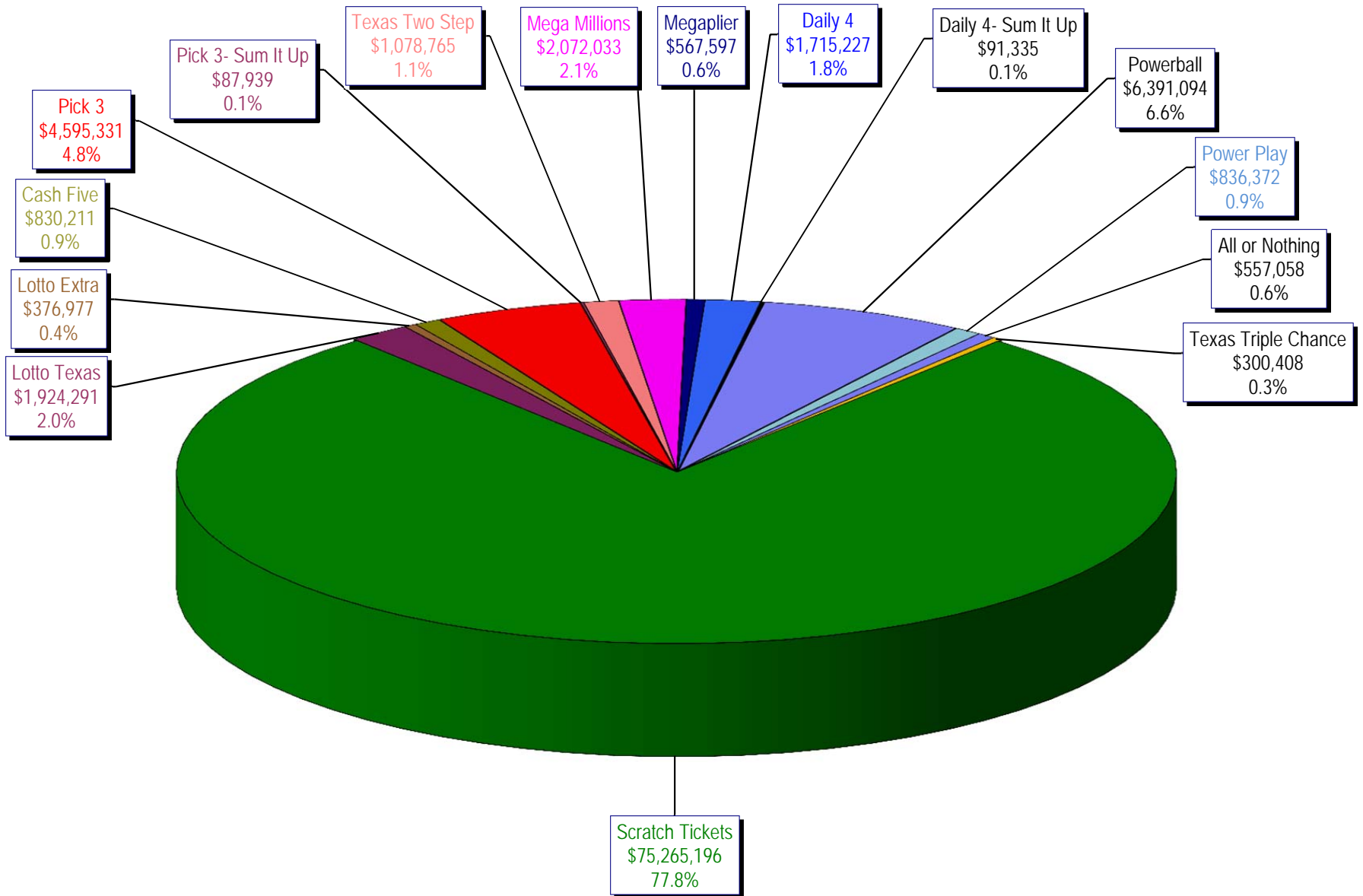
\* Before Unclaimed Prizes

\*\*Estimated; depends on # of guaranteed prizes won in Texas

Texas Lottery Commission  
Scratch Ticket Sales  
For the week ending 11/19/16  
(Unaudited)



**Texas Lottery Commission**  
**All Game Sales**  
For the week ending 11/19/16  
(Unaudited)



Texas Lottery Commission - Weekly Sales Summary for FY 2017 (Unaudited)

Week Ended	Scratch Tickets	New Games & Dates	Lotto Texas	Jackpot		Lotto Extra	Pick 3	Pick 3 Sum It Up	Cash Five	Texas Two Step	Jackpot		Mega Millions	Jackpot		Megaplier	Daily 4	Daily 4 Sum It Up	Powerball	Jackpot		Power Play	All or Nothing	Texas Triple Chance	Total	Per Cap.	
				W	S						M	TH		T	F					W	S						
9/3/2016*	69,589,808	0	2,106,552	8.75	9.25	402,665	4,798,985	92,214	843,135	810,947	200	200	2,331,141	84	92	631,299	1,788,614	96,398	4,189,234	154	170	603,430	528,102	306,194	89,118,717	3.24	
9/10/2016	65,952,418	1810 (\$1.N); 1809 (\$1.N); 1811 (\$5.N) - 9/06/16	2,095,828	9.75	10.25	399,944	4,590,651	86,697	818,614	862,148	225	275	2,490,552	101	111	655,066	1,647,119	87,455	4,473,836	186	205	628,810	506,718	291,940	85,587,795	3.12	
9/17/2016	66,196,270	0	2,127,440	11	11.75	405,936	4,553,039	86,110	822,240	1,180,444	400	550	2,661,252	122	133	692,583	1,705,629	91,610	5,096,928	222	244	696,626	503,466	291,988	87,111,560	3.17	
9/24/2016	64,383,005	1793 (\$2.N); 1782 (\$5.N); 1781 (\$10.N) - 9/19/16	2,141,721	12.25	13	404,127	4,551,066	83,958	811,604	1,465,789	700	900	1,733,288	15	20	489,347	1,680,793	90,386	2,790,676	40	50	429,512	503,041	275,858	81,834,170	2.98	
10/1/2016	67,349,951	0	2,203,652	13.25	14	414,603	4,642,047	91,016	857,979	816,836	200	225	1,840,801	25	30	515,384	1,688,464	88,184	2,960,772	60	70	455,619	589,964	354,532	84,869,803	3.09	
10/8/2016	71,598,690	1772 (\$1.N); 1770 (\$2.N); 1813 (\$5.N); 1779 (\$20.N) - 10/03/16	2,211,941	14.5	15.5	419,062	4,900,537	94,965	867,520	849,234	200	225	1,925,289	35	41	540,723	1,780,544	92,908	3,109,092	80	91	471,027	611,898	336,368	89,809,797	3.27	
10/15/2016	69,444,762	0	2,207,002	16	16.75	416,802	4,549,017	89,171	836,548	1,024,493	300	425	1,780,458	49	15	496,567	1,679,519	87,007	3,499,528	107	122	510,617	577,343	321,190	87,520,023	3.19	
10/22/2016	69,317,066	1814 (\$3.N); 1815 (\$5.N); 1832 (\$50.N) - 10/17/16	2,222,089	17	18	420,632	4,457,898	84,115	836,942	1,260,293	575	750	1,714,985	20	25	482,408	1,636,471	83,009	3,800,444	136	151	542,655	564,808	315,588	87,739,402	3.19	
10/29/2016	69,729,599	0	2,269,908	18.5	19.25	430,487	4,511,234	86,114	833,125	779,029	200	200	1,781,093	30	35	500,203	1,711,520	88,083	4,097,116	164	180	575,614	565,102	306,622	88,264,847	3.21	
11/5/2016	73,451,702	0	2,168,782	20	5	414,167	4,996,360	97,149	859,798	796,978	200	200	1,904,765	40	47	534,014	1,913,301	100,223	4,796,408	198	217	660,205	591,246	318,544	93,603,641	3.41	
11/12/2016	70,998,320	1816 (\$2.N); 1808 (\$5.N); 1817 (\$5.N); 1818 (\$10.N) - 11/07/16	1,893,513	5.25	5.5	368,470	4,642,196	89,581	833,195	869,408	225	275	1,964,313	54	65	541,639	1,741,306	90,176	5,313,351	236	258	715,597	563,280	299,436	90,923,780	3.31	
11/19/2016	75,265,196	1819 (\$1.N); 1820 (\$5.N); 1869 (\$10.N) - 11/16/16	1,924,291	5.75	6	376,977	4,595,331	87,939	830,211	1,078,765	400	550	2,072,033	73	82	567,597	1,715,227	91,335	6,391,094	293	320	836,372	557,058	300,408	96,689,833	3.52	
weekly change	6.0%		1.6%			2.3%	-1.0%	-1.8%	-0.4%	24.1%			5.5%			4.8%	-1.5%	1.3%	20.3%			16.9%	-1.1%	0.3%	6.3%		
	<b>SALES</b>		<b>SALES</b>			<b>SALES</b>	<b>SALES</b>	<b>SALES</b>	<b>SALES</b>	<b>SALES</b>			<b>SALES</b>			<b>SALES</b>	<b>SALES</b>	<b>SALES</b>	<b>SALES</b>			<b>SALES</b>	<b>SALES</b>	<b>SALES</b>	<b>SALES</b>	<b>% of Sales</b>	
Calendar Year to date	3,344,914,889		102,842,612			19,125,588	224,196,571	4,549,573	40,097,499	48,327,827			136,845,131			35,038,431	80,955,174	4,373,427	428,069,120			50,112,476	26,331,644	17,550,479	4,563,330,440	100.0%	
Fiscal Year to date 2017	796,667,245		24,566,782			4,679,378	53,573,823	1,026,393	9,620,521	11,362,312			23,071,901			6,337,935	19,841,060	1,041,743	48,556,981			6,839,884	6,401,388	3,566,226	1,017,153,571	100.0%	
*Full week includes 4 days from FY16																											