



WEEKLY SALES SUMMARY

Unaudited

Week Ending: 11/21/2009

Texas Lottery Commission
Fiscal Year to Date Sales Comparison
Unaudited

Through the week ending 11/21/2009 (12 weeks)

Sales by Game	FY 2008 *	FY 2009 **	FY 2010	\$ Change		% Change	
				FY 2010 to FY 2008	FY 2010 to FY 2009 to	FY 2010 to FY 2008	FY 2010 to FY 2009
Instants	\$ 629,753,831	\$ 592,451,164	\$ 606,907,422	\$ -22,846,409	\$ 14,456,258	-3.6%	2.4%
Lotto Texas	50,195,658	40,575,477	68,217,864	18,022,206	27,642,387	35.9%	68.1%
Pick 3	65,869,715	61,516,159	60,117,792	-5,751,923	-1,398,367	-8.7%	-2.3%
Pick 3 Sum It Up	427,500	1,316,532	1,205,012	777,512	-111,520	-	-8.5%
Cash 5	18,154,629	15,959,008	15,233,490	-2,921,139	-725,518	-16.1%	-4.5%
Texas Two Step	9,953,607	10,691,270	9,774,370	-179,237	-916,900	-1.8%	-8.6%
Mega Millions	30,449,524	30,753,876	43,224,522	12,774,998	12,470,647	42.0%	40.5%
Megaplier	7,919,405	7,925,741	9,751,854	1,832,449	1,826,113	23.1%	23.0%
Daily 4	9,050,620	9,259,661	11,458,801	2,408,181	2,199,140	-	23.7%
Daily 4 Sum It Up	2,647,116	1,229,982	1,124,240	-1,522,876	-105,742	-	-8.6%
Total	\$ 824,421,605	\$ 771,678,869	\$ 827,015,366	\$ 2,593,762	\$ 55,336,497	0.3%	7.2%

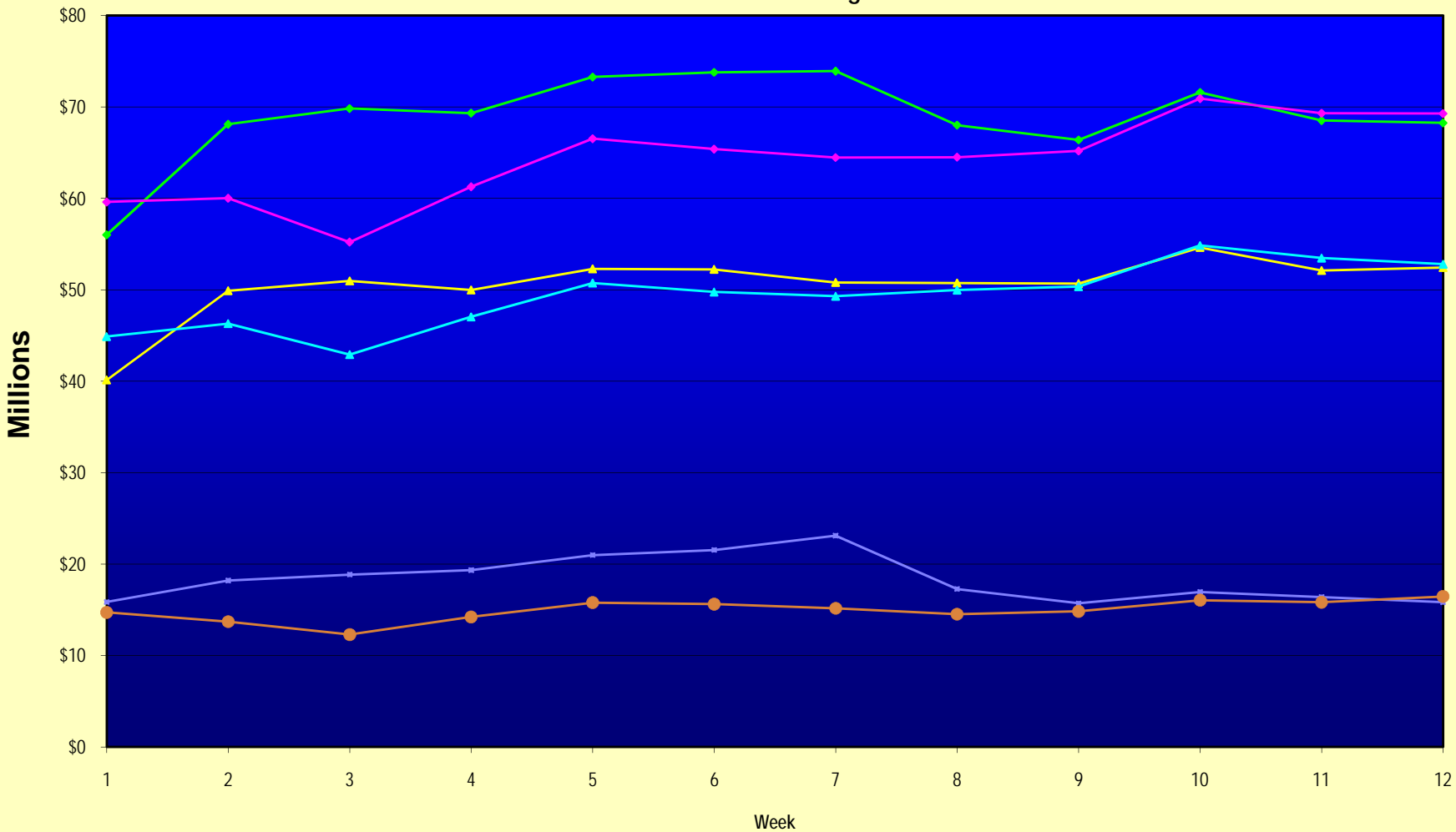
* 3 extra days ** 1 extra day

Texas Lottery Commission
 Fiscal Year to Date Cumulative Average Sales Comparison
 Unaudited

Through the week ending 11/21/2009 (12 weeks)

Sales by Game	FY 2008	FY 2009	FY 2010
Instants	\$ 7,408,869	\$ 7,137,966	\$ 7,401,310
Lotto Texas	590,537	488,861	831,925
Pick 3	774,938	741,159	733,144
Pick 3 Sum It Up	5,029	15,862	14,695
Cash 5	213,584	192,277	185,774
Texas Two Step	117,101	128,810	119,200
Mega Millions	358,230	370,529	527,128
Megaplier	93,169	95,491	118,925
Daily 4	106,478	111,562	139,741
Daily 4 Sum It Up	31,143	14,819	13,710
Total	\$ <u>9,699,078</u>	\$ <u>9,297,336</u>	\$ <u>10,085,553</u>
	thru 11/24/2007 85 days	thru 11/22/2008 83 days	thru 11/21/2009 82 days

Texas Lottery Commission Fiscal Year Over Year Change in Sales



Note: Week 1 is not a full week of sales as this report is prepared on a Fiscal Year basis.

Texas Lottery Commission
Instant Tickets by Price Point
Sales, Prize Expense, Sales Contribution and Payout Percentage With Year Over Year Changes
Unaudited

Fiscal Year	Price Point	# of Active Games	FY Sales	% of Instant Ticket Sales	Year over Year Change in Sales	FY Prize Expense	Year over Year Change in Prize Expense	FY Sales Contribution	Year over Year Change in Contribution	Average Prize Payout %	Year over Year Change in Payout %
2009	\$1.00	32	50,204,803	8.5%		30,253,432		19,951,371		60.3%	0.3%
thru	\$2.00	27	103,750,008	17.5%		67,297,954		36,452,054		64.9%	-0.6%
11/22/2008	\$3.00	13	66,555,972	11.2%		43,744,265		22,811,707		65.7%	0.0%
	\$5.00	29	177,156,279	29.9%		120,489,725		56,666,554		68.0%	0.1%
	\$7.00	6	23,673,132	4.0%		16,104,293		7,568,839		68.0%	0.0%
	\$10.00	12	78,027,020	13.2%		54,610,731		23,416,289		70.0%	0.0%
	\$20.00	7	59,047,300	10.0%		42,379,756		16,667,544		71.8%	0.0%
	\$25.00	1	2,379,050	0.4%		1,730,391		648,659		72.7%	0.2%
	\$30.00	3	5,580,600	0.9%		4,045,187		1,535,413		72.5%	0.1%
	\$50.00	3	26,077,000	4.4%		18,858,920		7,218,080		72.3%	0.2%
Total		133	\$592,451,164			\$399,514,655		\$192,936,509		67.4%	-0.3%
2010	\$1.00	25	51,010,609	8.4%		30,667,946		20,342,663		60.1%	0.0%
thru	\$2.00	29	88,017,088	14.5%		58,635,700		29,381,388		66.6%	2.3%
11/21/2009	\$3.00	14	76,602,930	12.6%		50,351,998		26,250,932		65.7%	0.2%
	\$5.00	30	166,026,988	27.4%		112,733,920		53,293,068		67.9%	-0.2%
	\$7.00	5	24,888,507	4.1%		16,922,785		7,965,722		68.0%	0.0%
	\$10.00	12	89,655,560	14.8%		62,711,709		26,943,851		69.9%	0.0%
	\$20.00	5	93,701,440	15.4%		69,921,889		23,779,551		74.6%	2.0%
	\$25.00	0	-	0.0%		-		-		0.0%	-100.0%
	\$30.00	0	-	0.0%		-		-		0.0%	-100.0%
	\$50.00	2	17,004,300	2.8%		13,172,663		3,831,637		77.5%	3.9%
Total		122	\$606,907,422			\$415,118,609		\$191,788,813		68.4%	0.9%
Variance	\$1.00	-7	805,806		1.6%	414,514	1.4%	391,292	2.0%	-0.14%	
2010 to	\$2.00	2	-15,732,920		-15.2%	-8,662,254	-12.9%	-7,070,666	-19.4%	1.75%	
2009	\$3.00	1	10,046,958		15.1%	6,607,733	15.1%	3,439,225	15.1%	0.01%	
	\$5.00	1	-11,129,291		-6.3%	-7,755,805	-6.4%	-3,373,486	-6.0%	-0.11%	
	\$7.00	-1	1,215,375		5.1%	818,492	5.1%	396,883	5.2%	-0.03%	
	\$10.00	0	11,628,540		14.9%	8,100,977	14.8%	3,527,563	15.1%	-0.04%	
	\$20.00	-2	34,654,140		58.7%	27,542,132	65.0%	7,112,008	42.7%	2.85%	
	\$25.00	-1	-2,379,050		-100.0%	-1,730,391	-100.0%	-648,659	-100.0%	-72.73%	
	\$30.00	-3	-5,580,600		-100.0%	-4,045,187	-100.0%	-1,535,413	-100.0%	-72.49%	
	\$50.00	-1	-9,072,700		-34.8%	-5,686,258	-30.2%	-3,386,442	-46.9%	5.15%	
Total		-11	\$14,456,258		2.4%	\$15,603,954	3.9%	-\$1,147,696	-0.6%	0.96%	

Texas Lottery Commission
Instant Tickets by Price Point
Sales, Prize Expense, Sales Contribution and Payout Percentage With Year Over Year Changes
 Unaudited

Notes - Instant Ticket Variances

		FY 2010		FY 2009		Difference
Sales	\$1 - \$7		\$406,546,122		\$421,340,194	-\$14,794,072
Prize Exp.	\$1 - \$7		\$269,312,349		\$277,889,669	-\$8,577,320
Sales Cont.	\$1 - \$7		\$137,233,773		\$143,450,525	-\$6,216,752
Prize Exp. %	\$1 - \$7		66.2%		66.0%	0.3%
		FY 2010		FY 2009		Difference
Sales	\$10 - \$50		\$200,361,300		\$171,110,970	\$29,250,330
Prize Exp.	\$10 - \$50		\$145,806,260		\$121,624,986	\$24,181,274
Sales Cont.	\$10 - \$50		\$54,555,040		\$49,485,984	\$5,069,056
Prize Exp. %	\$10 - \$50		72.8%		71.1%	1.7%
		FY 2010		FY 2009		Difference
Sales	Instant		\$606,907,422		\$592,451,164	\$14,456,258
Prize Exp.	Instant		\$415,118,609		\$399,514,655	\$15,603,954
Sales Cont.	Instant		\$191,788,813		\$192,936,509	-\$1,147,696
Prize Exp. %	Instant		68.4%		67.4%	1.0%

		FY 2010		FY 2009		Difference
Sales	\$1 - \$10		\$496,201,682		\$499,367,214	-\$3,165,532
Prize Exp.	\$1 - \$10		\$332,024,058		\$332,500,401	-\$476,343
Sales Cont.	\$1 - \$10		\$164,177,624		\$166,866,813	-\$2,689,189
Prize Exp. %	\$1 - \$10		66.9%		66.6%	0.3%
		FY 2010		FY 2009		Difference
Sales	\$20 - \$50		\$110,705,740		\$93,083,950	\$17,621,790
Prize Exp.	\$20 - \$50		\$83,094,551		\$67,014,254	\$16,080,297
Sales Cont.	\$20 - \$50		\$27,611,189		\$26,069,696	\$1,541,493
Prize Exp. %	\$20 - \$50		75.1%		72.0%	3.1%
		FY 2010		FY 2009		Difference
Sales	Instant		\$606,907,422		\$592,451,164	\$14,456,258
Prize Exp.	Instant		\$415,118,609		\$399,514,655	\$15,603,954
Sales Cont.	Instant		\$191,788,813		\$192,936,509	-\$1,147,696
Prize Exp. %	Instant		68.4%		67.4%	1.0%

Texas Lottery Commission
Weekly Sales Summary
& Comparison to Previous Week
 Unaudited

	Week Ending 11/21/2009		Week Ending 11/14/2009			
	<u>THIS WEEK</u>	% of Sales	<u>LAST WEEK</u>	% of Sales	<u>\$ change</u>	<u>% change</u>
Total Sales	<u>\$68,257,442</u>		<u>\$68,516,567</u>		<u>-\$259,125</u>	-0.38%
Instant Tickets	<u>\$52,427,881</u>	76.8%	<u>\$52,109,218</u>	76.1%	<u>\$318,663</u>	0.61%
Lotto Texas	\$3,943,958	5.8%	\$3,985,493	5.8%	-\$41,535	-1.04%
Pick 3	\$5,123,802	7.5%	\$5,172,603	7.5%	-\$48,801	-0.94%
Pick 3 Sum It Up	\$104,705	0.2%	\$104,782	0.2%	-\$77	-0.07%
Cash 5	\$1,255,026	1.8%	\$1,274,573	1.9%	-\$19,547	-1.53%
Texas Two Step	\$797,796	1.2%	\$829,607	1.2%	-\$31,811	-3.83%
Mega Millions	\$2,834,318	4.2%	\$3,210,618	4.7%	-\$376,300	-11.72%
Megaplier	\$687,221	1.0%	\$752,365	1.1%	-\$65,144	-8.66%
Daily 4	\$990,042	1.5%	\$983,343	1.4%	\$6,700	0.68%
Daily 4 Sum It Up	<u>\$92,693</u>	0.1%	<u>\$93,966</u>	0.1%	<u>-\$1,273</u>	-1.35%
Total Online Sales	<u>\$15,829,561</u>		<u>\$16,407,349</u>		<u>-\$577,788</u>	-3.52%

* Totals may not sum due to rounding.

Texas Lottery Commission
Weekly Sales Summary
Unaudited

INSTANT TICKETS
TOP TEN SELLING GAMES

For the Week Ending : 11/21/2009

Rank	Price Point	Game	Sales (Millions)
1	\$ 20	\$500,000,000 BLOCKBUSTER	\$ 4.260
2	\$ 5	\$50,000 CASH WINFALL	\$ 3.405
3	\$ 10	JINGLE JUMBO BUCKS	\$ 2.940
4	\$ 20	MERRY MILLIONAIRE	\$ 2.849
5	\$ 5	WINTER WINNINGS	\$ 2.438
6	\$ 7	SPARKLING 7'S	\$ 1.990
7	\$ 3	BONUS WORD CASHWORD	\$ 1.725
8	\$ 2	VETERANS' CASH	\$ 1.680
9	\$ 3	BONUS CASHWORD	\$ 1.642
10	\$ 10	BIG PAYOUT	\$ 1.578

Texas Lottery Commission
Prize Payout Tracking Report
Unaudited

Through Week Ending 11/21/2009

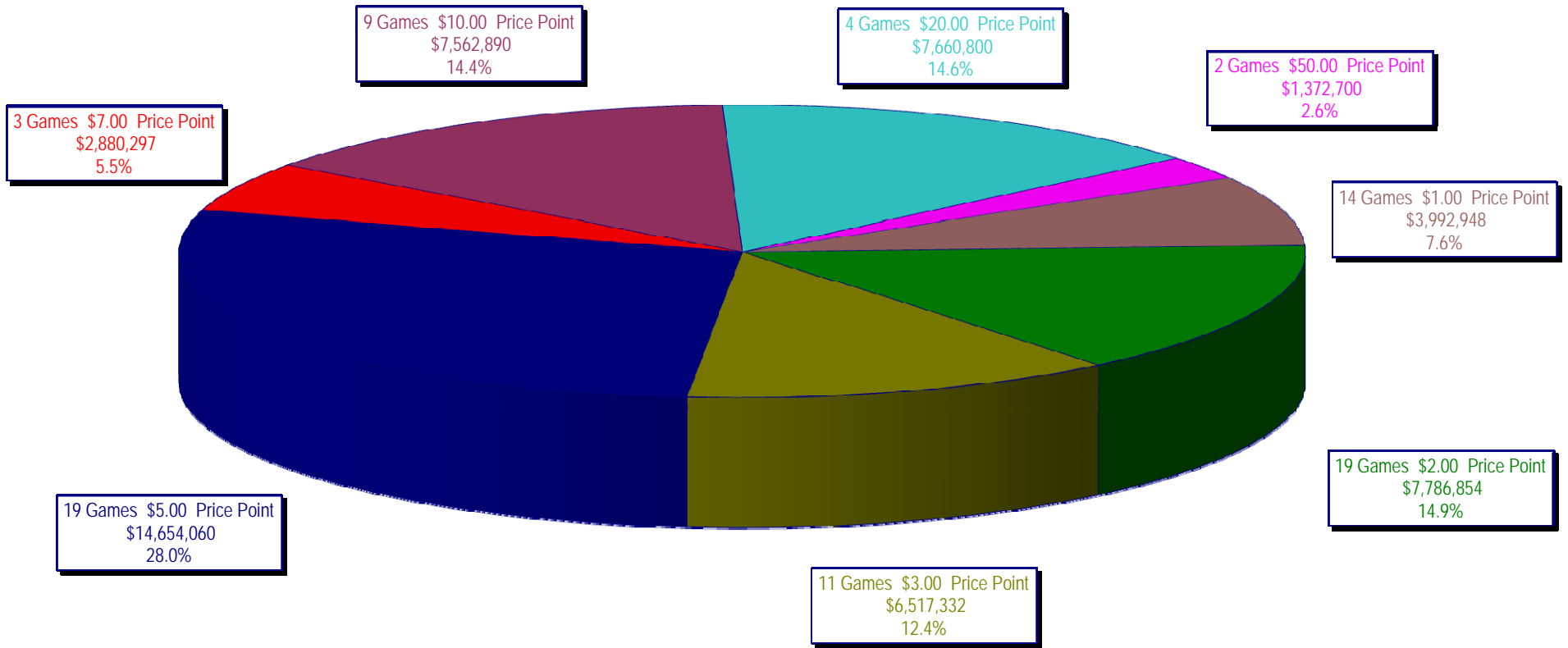
On-Line Sales

		FY Sales Through Week Ending 11/21/2009		FY Prize Expense Through Week Ending 11/21/2009	Actual* Prize Payout	Base Payout (Prize Pool)
Lotto	\$	68,217,864	\$	34,131,856	50.03%	50.00%
Pick 3		60,117,792		28,165,950	46.85%	50.00%
Pick 3 Sum It Up		1,205,012		571,358	47.42%	50.00%
Cash 5		15,233,490		8,085,178	53.08%	50.00%
Texas Two-Step		9,774,370		5,117,092	52.35%	50.00%
Mega Millions		43,224,522		21,926,457	50.73%	50.00%**
Megaplier		9,751,854		3,088,067	31.67%	N/A
Daily 4		11,458,801		5,995,475	52.32%	50.00%
Daily 4-Sum It Up		1,124,240		540,465	48.07%	50.00%
Totals	\$	220,107,944	\$	107,621,898	48.90%	

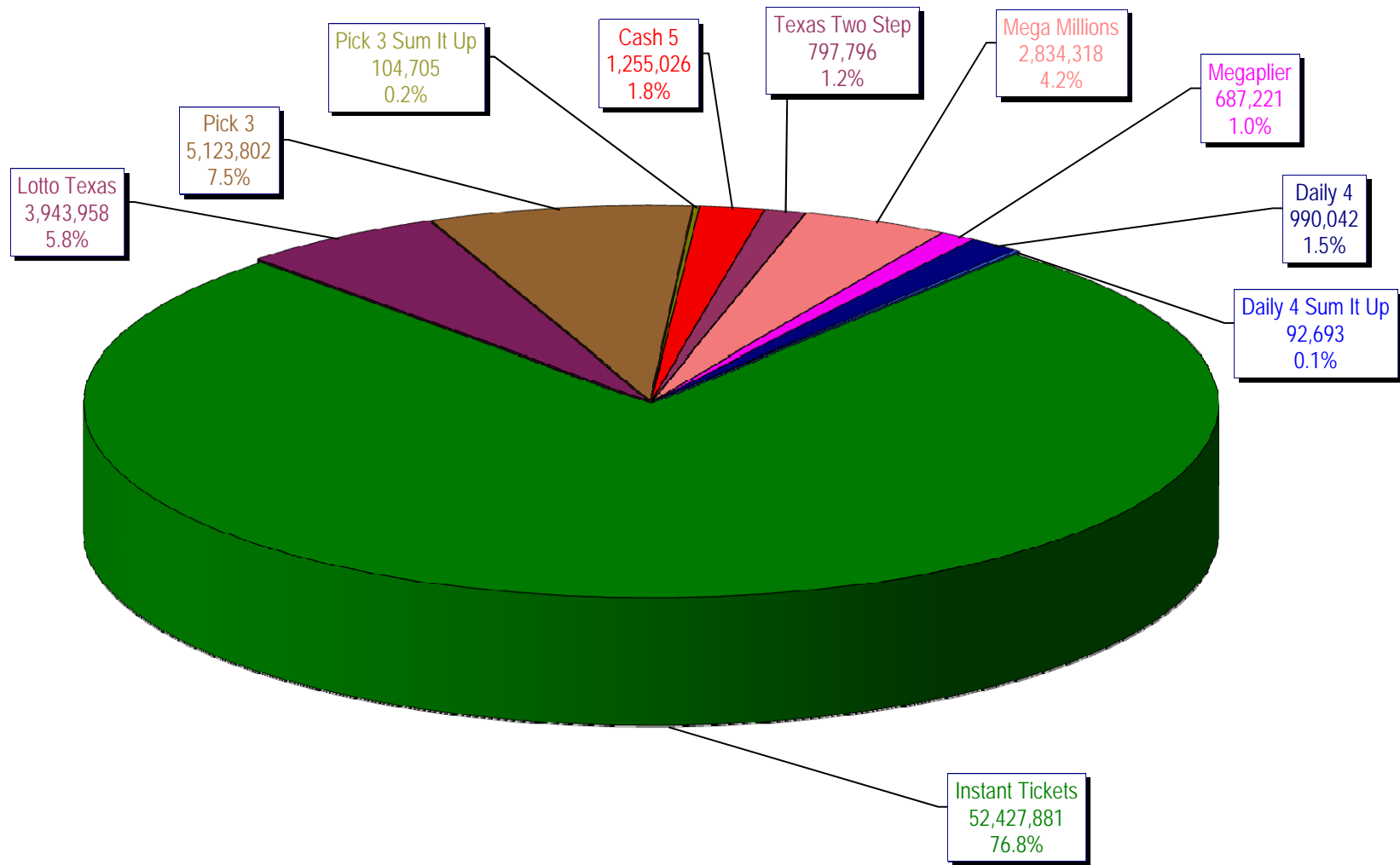
* Before Unclaimed Prizes

** Estimated; depends on # of guaranteed prizes won in Texas

Texas Lottery Commission
Instant Ticket Sales
For the Week Ending 11/21/2009
(Unaudited)



Texas Lottery Commission
All Game Sales
For the Week Ending 11/21/2009
(Unaudited)



Texas Lottery Commission - Weekly Sales Summary for FY 2010 (Unaudited)

Week Ended	Instant Games	New Games & Dates	Lotto Texas	Jackpot W S	Pick 3	Pick 3 Sum It Up	Cash 5	Texas Two Step	Jackpot M TH	Mega Millions	Jackpot T F	Megaplier	Daily 4	Daily 4 Sum It Up	Total	Per Cap.
9/5/2009	53,436,608.00	1183 (\$2.N) - 08/31/09	6,294,287.00	45 47	5,276,229.00	104,886.00	1,338,093.00	1,212,330.00	1.2 200	2,959,401.00	12 12	708,622.00	955,411.00	95,751.00	72,381,618.00	2.98
9/12/2009	49,896,100.00	1200 (\$1.N); 1201 (\$10.N) - 09/07/09	6,426,945.00	49 51	5,109,927.50	104,641.00	1,278,982.00	771,782.00	225 200	2,811,431.00	18 28	693,407.00	918,268.00	90,931.50	68,102,415.00	2.80
9/19/2009	50,971,937.00	1202 (\$3.N); 1185 (\$5.N) - 09/14/09	6,496,645.00	53 55	5,176,010.00	103,700.00	1,295,302.00	803,124.00	200 225	3,164,844.00	38 51	760,088.00	965,671.50	94,237.00	69,831,558.50	2.87
9/26/2009	49,975,243.00	1141 (\$1.N); 1259 (\$3.N) - 09/21/09	6,765,369.00	57 59	4,894,237.50	98,171.00	1,271,129.00	915,249.00	275 400	3,568,088.00	62 75	822,408.00	918,596.00	92,187.50	69,320,678.00	2.85
10/3/2009	52,283,569.00	1203 (\$2.N); 1172 (\$5.N) - 09/28/09	7,003,107.00	61 63	5,156,873.00	102,841.50	1,315,863.00	1,111,913.00	525 650	4,270,019.00	88 105	939,935.00	993,158.50	97,984.50	73,275,263.50	3.01
10/10/2009	52,238,261.00	1205 (\$1.N); 1263 (\$3.N) - 10/05/09	7,061,948.00	64 67	5,050,571.00	102,586.50	1,300,852.00	811,464.00	200 225	5,100,350.00	122 145	1,050,507.00	971,147.50	98,012.50	73,785,699.50	3.03
10/17/2009	50,806,599.00	1187 (\$2.N); 1193 (\$20.N) - 10/12/09	7,262,683.00	70 73	4,990,457.00	99,389.50	1,276,305.00	769,253.00	200 200	6,449,660.00	170 200	1,245,391.00	931,084.00	90,371.00	73,921,192.50	3.04
10/24/2009	50,731,592.00	1188 (\$3.N); 1189 (\$5.N) - 10/19/09	5,785,292.00	76 4	4,845,815.00	93,256.00	1,282,033.00	806,971.00	225 275	2,776,628.00	12 18	663,491.00	931,641.00	89,284.00	68,006,003.00	2.80
10/31/2009	50,684,853.00	1192 (\$10.N); 1186 (\$1.N) - 10/26/09	3,749,006.00	5 6	4,944,409.00	98,542.50	1,289,523.00	815,750.00	375 200	2,988,991.00	28 40	717,574.00	1,006,435.00	100,489.50	66,395,573.00	2.73
11/7/2009	54,633,928.00	1191 (\$7.N) - 11/02/09	3,982,319.00	7 8	5,265,020.50	105,180.50	1,339,215.00	853,140.00	225 275	3,458,403.00	50 63	795,045.00	1,058,564.00	104,724.00	71,595,539.00	2.94
11/14/2009	52,109,218.00	1218 (\$2.N); 1184 (\$5.N) - 11/09/09	3,985,493.00	9 10	5,172,602.50	104,782.00	1,274,573.00	829,607.00	375 200	3,210,618.00	77 12	752,365.00	983,342.50	93,966.00	68,516,567.00	2.82
11/21/2009	52,427,881.00	0	3,943,958.00	11 12	5,123,802.00	104,705.00	1,255,026.00	797,796.00	225 275	2,834,318.00	17 27	687,221.00	990,042.00	92,693.00	68,257,442.00	2.81
weekly change	0.61%		-1.04%		-0.94%	-0.07%	-1.53%	-3.83%		-11.72%		-8.66%	0.68%	-1.35%	-0.38%	
SALES	SALES	SALES	SALES	SALES	SALES	SALES	SALES	SALES	SALES	SALES	SALES	SALES	SALES	SALES	SALES	% of Sales
Startup to date	36,879,025,721.00		10,547,831,411.00		3,643,715,549.50	13,606,087.00	2,205,137,630.00	487,562,301.00		1,184,755,121.45		275,320,141.00	100,509,011.50	14,878,067.00	55,560,475,012.45	100.0%
Calendar Year to date	2,497,122,046.00		208,462,119.00		252,556,050.50	175,670.50	62,399,176.00	46,403,164.00		200,798,217.95		43,452,326.00	44,301,353.00	4,737,259.50	3,360,407,382.45	100.0%
Fiscal Year to date 2010	606,907,422.00		68,217,864.00		60,117,792.00	1,205,011.50	15,233,490.00	9,774,370.00		43,224,522.00		9,751,854.00	11,458,800.50	1,124,240.00	827,015,366.00	100.0%