



WEEKLY SALES SUMMARY

Unaudited

[Week Ending: 11/22/2014](#)

Texas Lottery Commission
Fiscal Year to Date Sales Comparison
Unaudited

Through the Week Ending 11/22/2014 (12 Weeks)

Sales by Game	FY 2013 *	FY 2014 **	FY 2015	\$ Change		% Change	
				FY 2015 to FY 2013	FY 2015 to FY 2014	FY 2015 to FY 2013	FY 2015 to FY 2014
Instants	\$ 693,920,672	\$ 722,398,855	\$ 739,995,839	\$ 46,075,167	\$ 17,596,984	6.6%	2.4%
Lotto Texas	37,597,701	30,942,934	27,305,548	-10,292,153	-3,637,386	-27.4%	-11.8%
Lotto Extra	-	3,907,267	4,114,527	4,114,527	207,260	-	5.3%
Pick 3	61,686,568	57,941,879	56,412,460	-5,274,108	-1,529,419	-8.5%	-2.6%
Pick 3 Sum It Up	1,158,355	1,148,139	1,085,210	-73,145	-62,929	-6.3%	-5.5%
Cash Five	13,251,851	12,129,144	11,326,699	-1,925,152	-802,445	-14.5%	-6.6%
Texas Two Step	12,205,400	13,055,140	13,135,689	930,289	80,549	7.6%	0.6%
Mega Millions	25,284,403	32,387,133	37,929,832	12,645,429	5,542,699	50.0%	17.1%
Megaplier	5,855,816	7,159,433	8,523,410	2,667,594	1,363,977	45.6%	19.1%
Daily 4	16,178,720	19,079,262	18,872,652	2,693,933	-206,610	16.7%	-1.1%
Daily 4 Sum It Up	1,093,564	1,180,257	1,140,665	47,101	-39,593	4.3%	-3.4%
Powerball	49,150,897	57,203,015	41,361,975	-7,788,922	-15,841,040	-15.8%	-27.7%
Power Play	5,767,043	6,540,956	5,347,897	-419,146	-1,193,059	-7.3%	-18.2%
All or Nothing	23,059,839	11,086,416	9,066,210	-13,993,629	-2,020,206	-60.7%	-18.2%
Monopoly	-	-	1,851,850	1,851,850	1,851,850	-	-
Total	\$ 946,210,828	\$ 976,159,829	\$ 977,470,463	\$ 31,259,635	\$ 1,310,634	3.3%	0.1%

* 2 extra days

** 1 extra day

Texas Lottery Commission
Fiscal Year to Date Cumulative Average Sales Comparison
Unaudited

Through the Week Ending 11/22/2014 (12 Weeks)

Sales by Game	FY 2013	FY 2014	FY 2015
Instant	\$ 8,163,773	\$ 8,599,986	\$ 8,915,613
Lotto Texas	442,326	368,368	328,983
Lotto Extra	-	46,515	49,573
Pick 3	725,724	689,784	679,668
Pick 3 Sum It Up	13,628	13,668	13,075
Cash Five	155,904	144,395	136,466
Texas Two Step	143,593	155,418	158,261
Mega Millions	297,464	385,561	456,986
Megaplier	68,892	85,231	102,692
Daily 4	190,338	227,134	227,381
Daily 4 Sum It Up	12,865	14,051	13,743
Powerball	578,246	680,988	498,337
Power Play	67,848	77,869	64,432
All or Nothing	* 299,478	131,981	109,231
Monopoly	-	- **	52,910
Total	\$ 11,160,078	\$ 11,620,950	\$ 11,807,351

	thru 11/24/2012	thru 11/23/2013	thru 11/22/2014
	85 days	84 days	83 days
*	77 days		** 35 days

Texas Lottery Commission
Fiscal Year Over Year Change in Sales
Unaudited
FY 2015 Compared to FY 2014

			INSTANT TICKETS				DRAW GAMES				TOTAL SALES			
Week	FY 2015		FY 2015	FY 2014	Difference	% change - Cumulative Sales	FY 2015	FY 2014	Difference	% change - Cumulative Sales	FY 2015	FY 2014	Difference	% change - Cumulative Sales
	Week	Ending												
1	9/6/2014 *		\$54,911,801	\$58,587,757	(\$3,675,956)	-6.3%	\$17,482,488	\$22,369,499	(\$4,887,011)	-21.8%	\$72,394,289	\$80,957,256	(\$8,562,967)	-10.6%
2	9/13/2014		\$61,436,533	\$57,135,931	\$4,300,602	7.5%	\$19,097,081	\$25,412,980	(\$6,315,899)	-24.9%	\$80,533,614	\$82,548,911	(\$2,015,297)	-2.4%
3	9/20/2014		\$60,959,234	\$59,018,194	\$1,941,040	3.3%	\$20,567,894	\$29,161,241	(\$8,593,347)	-29.5%	\$81,527,128	\$88,179,435	(\$6,652,307)	-7.5%
4	9/27/2014		\$59,710,056	\$57,927,984	\$1,782,072	3.1%	\$19,920,828	\$20,012,313	(\$91,485)	-0.5%	\$79,630,884	\$77,940,297	\$1,690,588	2.2%
5	10/4/2014		\$62,119,854	\$62,146,816	(\$26,962)	0.0%	\$18,531,421	\$20,043,557	(\$1,512,136)	-7.5%	\$80,651,275	\$82,190,373	(\$1,539,098)	-1.9%
6	10/11/2014		\$61,253,665	\$60,867,582	\$386,083	0.6%	\$18,985,332	\$19,480,962	(\$495,631)	-2.5%	\$80,238,997	\$80,348,544	(\$109,548)	-0.1%
7	10/18/2014		\$60,230,048	\$60,612,193	(\$382,145)	-0.6%	\$19,538,402	\$20,079,610	(\$541,209)	-2.7%	\$79,768,450	\$80,691,803	(\$923,354)	-1.1%
8	10/25/2014		\$62,384,112	\$59,548,277	\$2,835,835	4.8%	\$21,475,643	\$19,319,928	\$2,155,715	11.2%	\$83,859,755	\$78,868,205	\$4,991,550	6.3%
9	11/1/2014		\$63,404,713	\$61,710,236	\$1,694,477	2.7%	\$23,568,817	\$18,308,976	\$5,259,842	28.7%	\$86,973,530	\$80,019,212	\$6,954,319	8.7%
10	11/8/2014		\$65,486,719	\$61,668,594	\$3,818,125	6.2%	\$23,749,032	\$19,555,070	\$4,193,963	21.4%	\$89,235,751	\$81,223,664	\$8,012,088	9.9%
11	11/15/2014		\$61,745,521	\$60,057,025	\$1,688,496	2.8%	\$17,449,604	\$20,930,071	(\$3,480,468)	-16.6%	\$79,195,125	\$80,987,096	(\$1,791,972)	-2.2%
12	11/22/2014		\$66,353,583	\$63,118,266	\$3,235,317	5.1%	\$17,108,084	\$19,086,770	(\$1,978,687)	-10.4%	\$83,461,667	\$82,205,036	\$1,256,631	1.5%
13	11/29/2014			\$57,145,294				\$20,434,618				\$77,579,912		
14	12/6/2014			\$59,883,783				\$22,791,842				\$82,675,625		
15	12/13/2014			\$60,310,298				\$35,859,153				\$96,169,451		
16	12/20/2014			\$65,088,999				\$46,832,745				\$111,921,744		
17	12/27/2014			\$67,721,619				\$18,218,091				\$85,939,710		
18	1/3/2015			\$67,162,991				\$19,140,745				\$86,303,736		
19	1/10/2015			\$65,049,914				\$17,954,333				\$83,004,247		
20	1/17/2015			\$62,731,830				\$18,900,213				\$81,632,043		
21	1/24/2015			\$59,085,886				\$19,558,830				\$78,644,716		
22	1/31/2015			\$64,099,096				\$20,764,006				\$84,863,102		
23	2/7/2015			\$67,717,353				\$22,433,672				\$90,151,025		
24	2/14/2015			\$69,949,998				\$25,572,367				\$95,522,365		
25	2/21/2015			\$72,422,148				\$31,832,665				\$104,254,813		
26	2/28/2015			\$72,883,830				\$21,827,140				\$94,710,970		
27	3/7/2015			\$73,726,744				\$22,528,352				\$96,255,096		
28	3/14/2015			\$71,026,808				\$25,171,358				\$96,198,166		
29	3/21/2015			\$69,174,125				\$25,837,564				\$95,011,689		
30	3/28/2015			\$66,886,917				\$18,604,870				\$85,491,787		
31	4/4/2015			\$71,218,020				\$19,883,667				\$91,101,687		
32	4/11/2015			\$65,970,648				\$18,875,485				\$84,846,133		
33	4/18/2015			\$64,922,280				\$19,723,048				\$84,645,328		
34	4/25/2015			\$60,578,829				\$18,978,148				\$79,556,977		
35	5/2/2015			\$64,244,545				\$19,029,632				\$83,274,177		
36	5/9/2015			\$65,679,029				\$19,350,478				\$85,029,507		
37	5/16/2015			\$63,627,971				\$19,865,609				\$83,493,580		
38	5/23/2015			\$61,902,451				\$19,892,846				\$81,795,297		
39	5/30/2015			\$61,264,953				\$20,014,636				\$81,279,589		
40	6/6/2015			\$64,019,948				\$21,782,886				\$85,802,834		
41	6/13/2015			\$59,742,598				\$19,736,748				\$79,479,346		
42	6/20/2015			\$59,010,863				\$17,095,336				\$76,106,199		

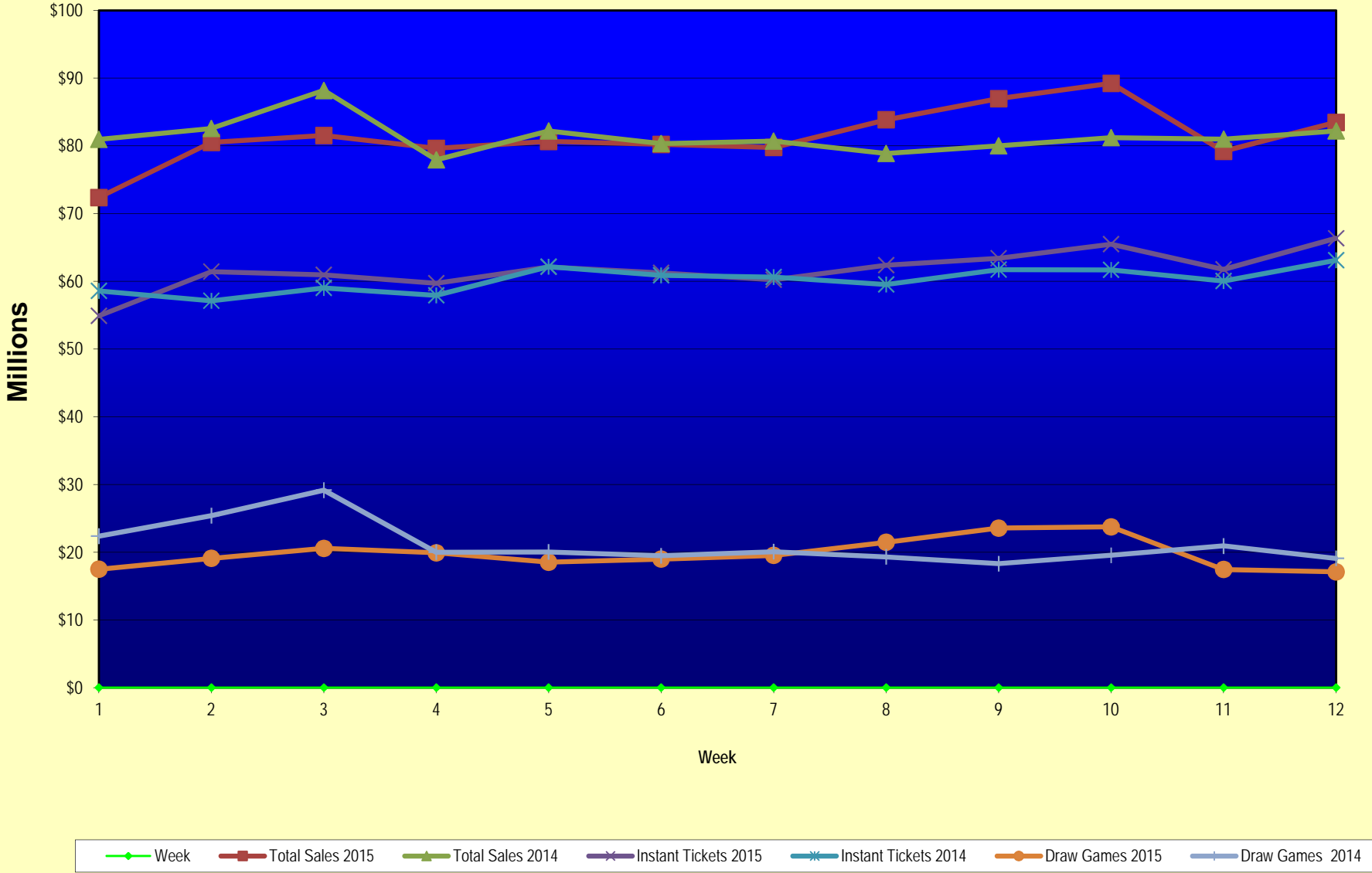
Texas Lottery Commission
Fiscal Year Over Year Change in Sales
Unaudited
FY 2015 Compared to FY 2014

			INSTANT TICKETS				DRAW GAMES				TOTAL SALES			
FY 2015			FY 2015	FY 2014	Difference	% change - Cumulative Sales	FY 2015	FY 2014	Difference	% change - Cumulative Sales	FY 2015	FY 2014	Difference	% change - Cumulative Sales
Week	Week	Ending												
43	6/27/2015			\$58,102,191				\$17,635,736				\$75,737,927		
44	7/4/2015			\$61,566,071				\$18,521,529				\$80,087,600		
45	7/11/2015			\$58,729,674				\$17,913,387				\$76,643,061		
46	7/18/2015			\$58,202,035				\$17,602,032				\$75,804,067		
47	7/25/2015			\$57,220,932				\$17,736,889				\$74,957,821		
48	8/1/2015			\$64,207,294				\$18,208,743				\$82,416,037		
49	8/8/2015			\$60,066,007				\$19,022,945				\$79,088,952		
50	8/15/2015			\$58,374,809				\$18,567,246				\$76,942,055		
51	8/22/2015			\$57,277,475				\$18,916,460				\$76,193,935		
52	8/29/2015			\$61,884,256				\$17,283,925				\$79,168,181		
	8/31/2015 **			\$7,949,803				\$706,956				\$8,656,759		
Total thru Current Week			\$739,995,839	\$722,398,855	\$17,596,984	2.4%	\$237,474,624	\$253,760,974	(\$16,286,350)	-6.4%	\$977,470,463	\$976,159,829	\$1,310,634	0.1%
Fiscal Year Total			\$739,995,839	\$3,280,229,170			\$237,474,624	\$1,104,367,893			\$977,470,463	\$4,384,597,063		

* FY 15 includes 6 days

** FY 15 includes 2 days; FY 14 includes 1 day

Texas Lottery Commission Fiscal Year Over Year Change in Sales



Note: Week 1 is not a full week of sales as this report is prepared on a Fiscal Year basis.

Texas Lottery Commission
Instant Tickets by Price Point
Sales, Prize Expense, Sales Contribution and Payout Percentage With Year Over Year Changes
Unaudited

Fiscal Year	Price Point	# of Active Games	FY Sales	% of Instant Ticket Sales	Year over Year Change in Sales	FY Prize Expense	Year over Year Change in Prize Expense	FY Sales Contribution	Year over Year Change in Contribution	Average Prize Payout %	Year over Year Change in Payout %
2014	\$1.00	21	42,034,010	5.8%		25,190,897		16,843,113		59.9%	-1.3%
Through	\$2.00	27	86,794,792	12.0%		56,361,159		30,433,633		64.9%	-0.1%
11/23/2013	\$3.00	14	78,591,273	10.9%		51,447,601		27,143,672		65.5%	-0.1%
	\$5.00	36	237,028,150	32.8%		161,016,292		76,011,858		67.9%	-0.1%
	\$10.00	12	135,022,370	18.7%		95,366,612		39,655,758		70.6%	-0.6%
	\$20.00	8	115,385,960	16.0%		86,405,438		28,980,522		74.9%	0.0%
	\$50.00	2	27,542,300	3.8%		21,382,444		6,159,856		77.6%	0.0%
Total		120	\$722,398,855			\$497,170,444		\$225,228,411		68.8%	-0.2%
2015	\$1.00	16	37,527,585	5.1%		23,165,310		14,362,275		61.7%	3.0%
thru	\$2.00	25	77,182,150	10.4%		51,384,362		25,797,788		66.6%	2.7%
11/22/2014	\$3.00	11	73,637,934	10.0%		48,534,112		25,103,822		65.9%	0.4%
	\$5.00	36	234,141,880	31.6%		159,058,717		75,083,163		67.9%	0.0%
	\$10.00	13	150,521,910	20.3%		106,280,907		44,241,003		70.6%	0.4%
	\$20.00	8	132,689,780	17.9%		99,504,786		33,184,994		75.0%	0.2%
	\$50.00	3	34,294,600	4.6%		26,651,363		7,643,237		77.7%	0.1%
Total		112	\$739,995,839			\$514,579,555		\$225,416,284		69.5%	0.9%
Variance	\$1.00	-5	-4,506,425		-10.7%	-2,025,587	-8.0%	-2,480,838	-14.7%	1.80%	
2015 to	\$2.00	-2	-9,612,642		-11.1%	-4,976,798	-8.8%	-4,635,844	-15.2%	1.64%	
2014	\$3.00	-3	-4,953,339		-6.3%	-2,913,490	-5.7%	-2,039,849	-7.5%	0.45%	
	\$5.00	0	-2,886,270		-1.2%	-1,957,576	-1.2%	-928,694	-1.2%	0.00%	
	\$10.00	1	15,499,540		11.5%	10,914,295	11.4%	4,585,245	11.6%	-0.02%	
	\$20.00	0	17,303,820		15.0%	13,099,348	15.2%	4,204,472	14.5%	0.11%	
	\$50.00	1	6,752,300		24.5%	5,268,919	24.6%	1,483,381	24.1%	0.08%	
Total		-8	\$17,596,984		2.4%	\$17,409,111	3.5%	\$187,873	0.1%	0.71%	

Notes - Instant Ticket Variances

Texas Lottery Commission
Instant Tickets by Price Point
Sales, Prize Expense, Sales Contribution and Payout Percentage With Year Over Year Changes
 Unaudited

		FY 2015		FY 2014		Difference
Sales	\$1 - \$5	\$422,489,549		\$444,448,225		-\$21,958,676
Prize Exp.	\$1 - \$5	\$282,142,500		\$294,015,950		-\$11,873,451
Sales Cont.	\$1 - \$5	\$140,347,049		\$150,432,275		-\$10,085,225
Prize Exp. %	\$1 - \$5	66.8%		66.2%		0.6%
		FY 2015		FY 2014		Difference
Sales	\$10 - \$50	\$317,506,290		\$277,950,630		\$39,555,660
Prize Exp.	\$10 - \$50	\$232,437,056		\$203,154,494		\$29,282,562
Sales Cont.	\$10 - \$50	\$85,069,234		\$74,796,136		\$10,273,098
Prize Exp. %	\$10 - \$50	73.2%		73.1%		0.1%
		FY 2015		FY 2014		Difference
Sales	Instant	\$739,995,839		\$722,398,855		\$17,596,984
Prize Exp.	Instant	\$514,579,555		\$497,170,444		\$17,409,111
Sales Cont.	Instant	\$225,416,284		\$225,228,411		\$187,873
Prize Exp. %	Instant	69.5%		68.8%		0.7%

		FY 2015		FY 2014		Difference
Sales	\$1 - \$10	\$573,011,459		\$579,470,595		-\$6,459,136
Prize Exp.	\$1 - \$10	\$388,423,406		\$389,382,562		-\$959,156
Sales Cont.	\$1 - \$10	\$184,588,053		\$190,088,033		-\$5,499,980
Prize Exp. %	\$1 - \$10	67.8%		67.2%		0.6%
		FY 2015		FY 2014		Difference
Sales	\$20 - \$50	\$166,984,380		\$142,928,260		\$24,056,120
Prize Exp.	\$20 - \$50	\$126,156,149		\$107,787,882		\$18,368,267
Sales Cont.	\$20 - \$50	\$40,828,231		\$35,140,378		\$5,687,853
Prize Exp. %	\$20 - \$50	75.5%		75.4%		0.1%
		FY 2015		FY 2014		Difference
Sales	Instant	\$739,995,839		\$722,398,855		\$17,596,984
Prize Exp.	Instant	\$514,579,555		\$497,170,444		\$17,409,111
Sales Cont.	Instant	\$225,416,284		\$225,228,411		\$187,873
Prize Exp. %	Instant	69.5%		68.8%		0.7%

Texas Lottery Commission
 Weekly Sales Summary
 & Comparison to Previous Week
 Unaudited

	Week Ending 11/22/2014	% of Sales	Week Ending 11/15/2014	% of Sales	\$ change	% change
	<u>THIS WEEK</u>		<u>LAST WEEK</u>			
Total Sales	<u>\$83,461,667</u>		<u>\$79,195,125</u>		<u>\$4,266,542</u>	5.39%
Instant Tickets	<u>\$66,353,583</u>	79.5%	<u>\$61,745,521</u>	78.0%	<u>\$4,608,062</u>	7.46%
Lotto	\$2,199,718	2.6%	\$2,172,758	2.7%	\$26,960	1.24%
Lotto Extra	\$334,361	0.4%	\$326,413	0.4%	\$7,948	2.43%
Pick 3	\$4,639,564	5.6%	\$4,582,139	5.8%	\$57,425	1.25%
Pick 3 Sum It Up	\$87,768	0.1%	\$86,975	0.1%	\$793	0.91%
Cash Five	\$933,490	1.1%	\$936,682	1.2%	-\$3,192	-0.34%
Texas Two Step	\$851,281	1.0%	\$1,604,425	2.0%	-\$753,144	-46.94%
Mega Millions	\$2,013,021	2.4%	\$1,863,118	2.4%	\$149,903	8.05%
Megaplier	\$503,022	0.6%	\$471,023	0.6%	\$31,999	6.79%
Daily 4	\$1,588,603	1.9%	\$1,587,677	2.0%	\$926	0.06%
Daily 4 Sum It Up	\$91,235	0.1%	\$91,661	0.1%	-\$426	-0.46%
Powerball	\$2,470,536	3.0%	\$2,341,252	3.0%	\$129,284	5.52%
Power Play	\$341,955	0.4%	\$329,995	0.4%	\$11,960	3.62%
All or Nothing	\$728,436	0.9%	\$730,482	0.9%	-\$2,046	-0.28%
Monopoly	\$325,095	0.4%	\$325,005	0.0%	\$90	0.03%
Total Draw Game Sales	<u>\$17,108,084</u>		<u>\$17,449,604</u>		<u>-\$341,520</u>	-1.96%

* Totals may not sum due to rounding.

Texas Lottery Commission
Weekly Sales Summary
Unaudited

INSTANT TICKETS
TOP TEN SELLING GAMES

For the Week Ending: 11/22/14

Rank	Price Point	Game	Sales (Millions)
1	\$ 20	HOLIDAY GAME BOOK	\$ 5.113
2	\$ 10	HOLIDAY MAGIC	\$ 4.032
3	\$ 5	HOLIDAY GOLD	\$ 3.451
4	\$ 10	\$200,000,000 CASH BLOWOUT	\$ 2.490
5	\$ 50	MILLIONNAIRE'S CLUB	\$ 2.473
6	\$ 3	BONUS CASHWORD	\$ 2.314
7	\$ 5	\$100,000 MERRY MONEY	\$ 2.203
8	\$ 20	100X THE CASH	\$ 2.184
9	\$ 20	ONE MILLION CASH	\$ 2.089
10	\$ 10	ULTIMATE CROSSWORD	\$ 2.015

Texas Lottery Commission
Prize Payout Tracking Report
Unaudited

Through the Week Ending: 11/22/14

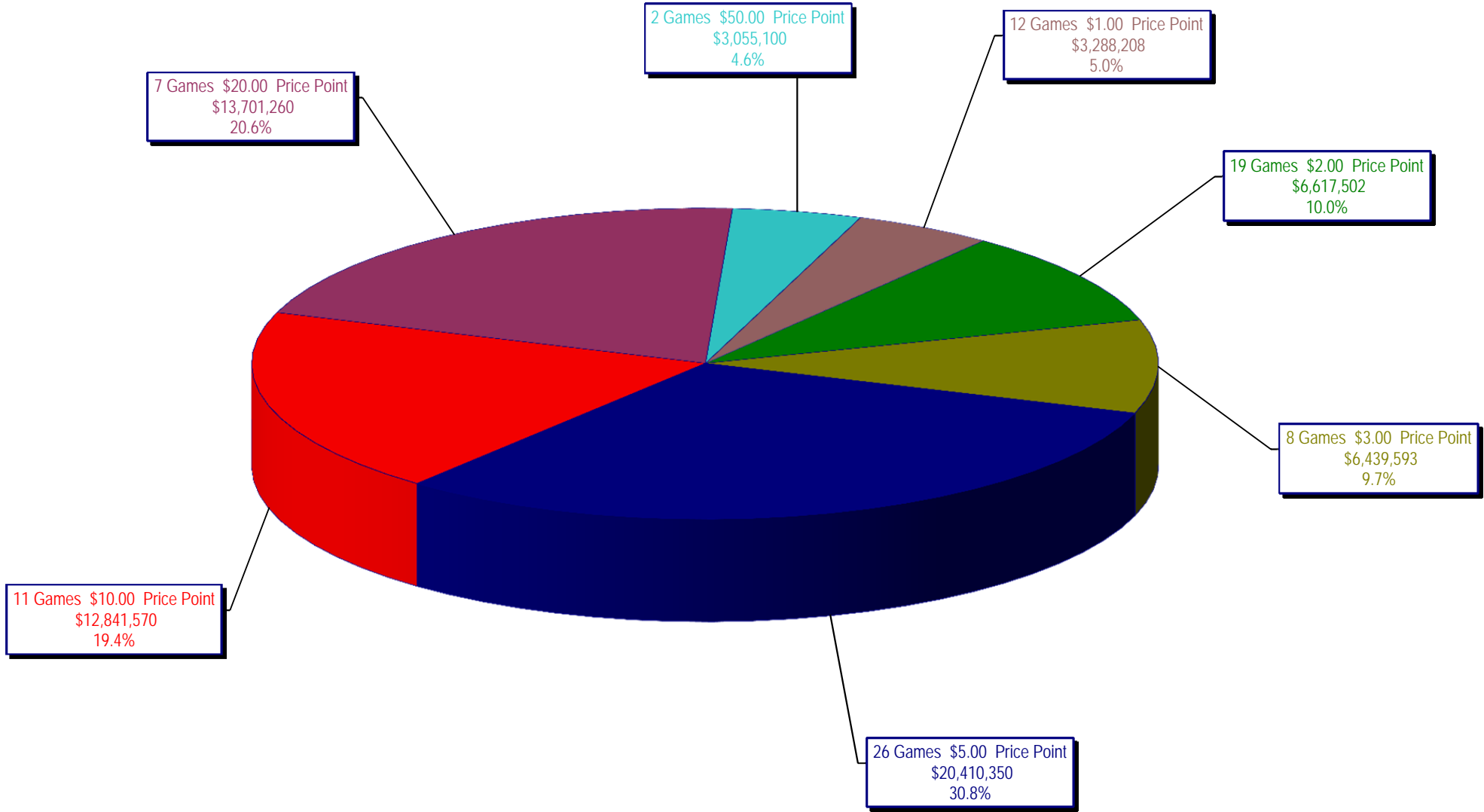
Draw Game Sales

	FY Sales Through Week Ending 11/22/2014	FY Prize Expense Through Week Ending 11/22/2014	Actual* Prize Payout	Base Payout (Prize Pool)
Lotto	\$ 27,305,548	\$ 13,753,995	50.37%	54.00%
Lotto Extra	4,114,527	2,183,976	53.08%	53.70%
Pick 3	56,412,460	26,349,920	46.71%	50.00%
Pick 3 Sum It Up	1,085,210	483,078	44.51%	50.00%
Cash Five	11,326,699	5,663,350	50.00%	50.00%
Texas Two Step	13,135,689	6,735,343	51.28%	50.00%
Mega Millions	37,929,832	19,390,457	51.12%	50.00%**
Megaplier	8,523,410	4,270,983	50.11%	N/A
Daily 4	18,872,652	8,670,675	45.94%	50.00%
Daily 4 Sum It Up	1,140,665	411,420	36.07%	50.00%
Powerball	41,361,975	20,764,573	50.20%	50.00%**
Power Play	5,347,897	2,684,931	50.21%	N/A
All or Nothing	9,066,210	6,067,324	66.92%	55.98%
Monopoly	1,851,850	2,874,800	155.24%	50.00%
Totals	\$ 237,474,624	\$ 120,304,824	50.66%	

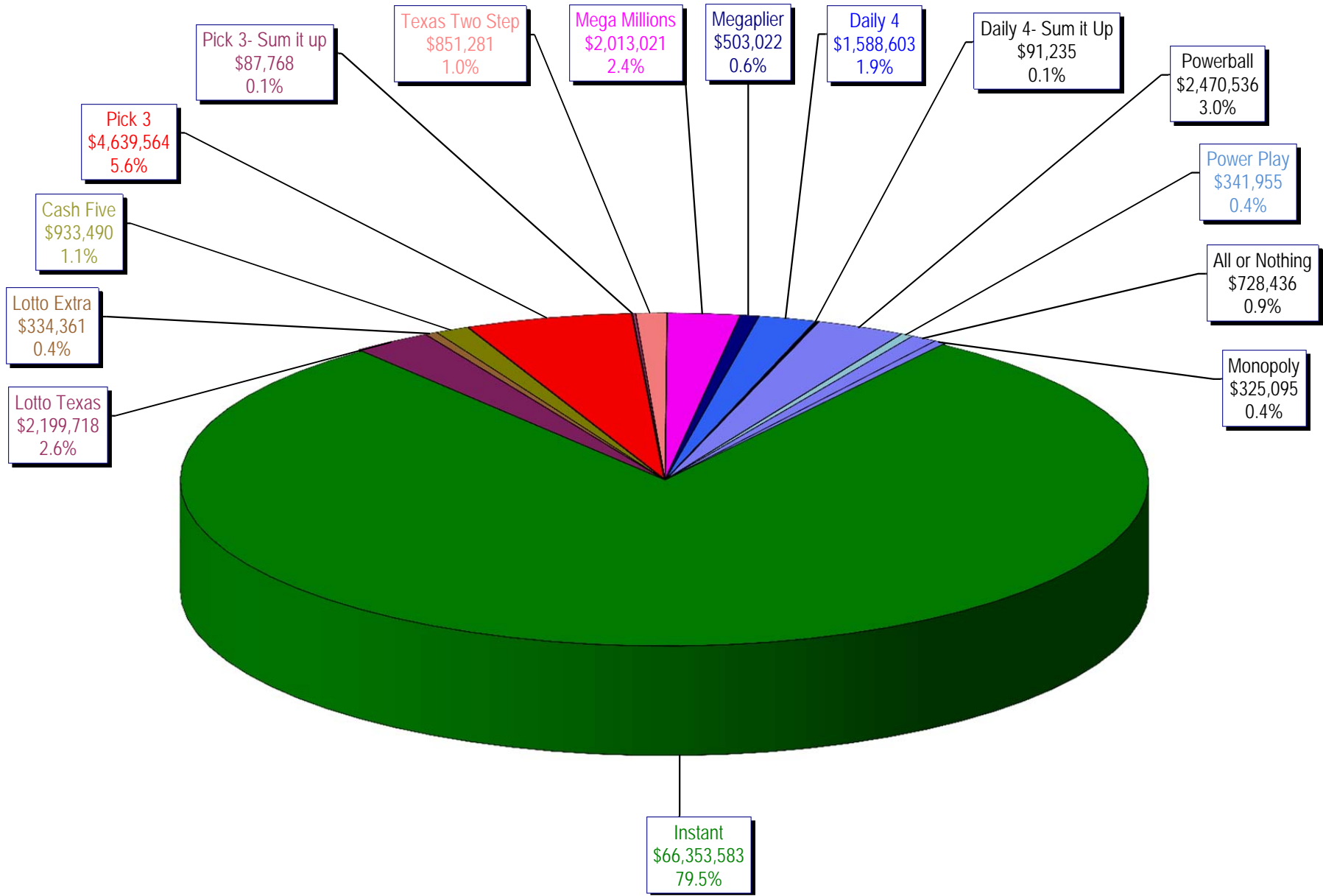
* Before Unclaimed Prizes

** Estimated; depends on # of guaranteed prizes won in Texas

Texas Lottery Commission
Instant Ticket Sales
For the Week Ending 11/22/14
(Unaudited)



Texas Lottery Commission
All Game Sales
For the Week Ending 11/22/14
(Unaudited)



Texas Lottery Commission - Weekly Sales Summary for FY 2015 (Unaudited)

Week Ended	Instant Games	New Games & Dates	Lotto Texas	Jackpot W	S	Lotto Extra	Pick 3	Pick 3 Sum It Up	Cash Five	Texas Two Step	Jackpot M	TH	Mega Millions	Jackpot T	F	Megaplier	Daily 4	Daily 4 Sum It Up	Powerball	Jackpot W	S	Power Play	All or Nothing	Monopoly	Jackpot F	Total	Per Cap.	
9/06/2014*	62,861,604	1589 (\$1.N); 1592 (\$5.N) - 9/1/14	2,281,237	6	6.25	341,232	4,827,600	92,305	958,777	918,635	225	300	1,847,432	25	33	475,313	1,640,023	104,626	3,465,202	100	110	450,723	786,340			81,051,048	3.11	
9/13/2014	61,436,533	0	2,299,834	6.5	6.75	344,225	4,787,666	91,850	960,067	1,214,553	425	575	1,992,737	41	52	501,468	1,571,433	97,036	3,957,407	127	149	497,718	781,088			80,533,614	3.09	
9/20/2014	60,959,234	1647 (\$2.N); 1619 (\$5.N) - 9/15/14	2,307,003	7	7.25	347,119	4,624,949	89,960	952,214	1,582,291	750	925	2,149,120	62	72	528,733	1,536,913	95,355	4,985,548	171	196	597,868	770,822			81,527,128	3.13	
9/27/2014	59,710,056	0	2,357,199	7.5	8.25	353,734	4,540,964	89,289	938,745	1,244,640	1,175	200	2,417,365	83	93	579,889	1,512,957	91,998	4,478,698	225	40	544,723	770,628			79,630,884	3.06	
10/4/2014	62,119,854	0	2,385,322	9	9.5	360,937	4,942,321	94,197	971,047	854,141	200	200	2,966,004	105	120	692,825	1,588,795	98,392	2,443,237	50	60	348,166	786,038			80,651,275	3.09	
10/11/2014	61,253,665	1608 (\$1.N); 1653 (\$5.N); 1651 (\$10.N) - 10/6/14	2,363,624	10.25	11	355,219	4,893,634	94,926	959,659	935,385	225	300	3,310,874	136	150	748,248	1,580,735	94,717	2,522,774	70	80	356,145	769,392			80,238,997	3.08	
10/18/2014	60,230,048	0	2,267,582	11.5	5	343,643	4,664,420	92,081	946,399	842,255	200	225	3,839,669	166	180	841,086	1,522,939	90,307	2,937,145	90	100	398,723	752,154			79,768,450	3.06	
10/25/2014	62,384,112	1655 (\$1.N); 1652 (\$2.N); 1638 (\$10.N); 1637 (\$20.N) - 10/20/14	2,201,043	5.25	5.5	330,460	4,585,640	89,676	933,854	823,726	200	225	4,755,898	200	224	990,074	1,560,894	96,697	3,449,128	110	125	444,897	746,246	467,410	15	83,859,755	3.22	
11/1/2014	63,404,713	1648 (\$3.N) - 10/31/14	2,289,864	5.75	6	346,139	4,620,420	87,141	925,312	993,957	300	425	5,950,540	252	284	1,199,010	1,554,893	93,945	3,903,664	142	159	494,803	733,770	375,360	18	86,973,530	3.34	
11/8/2014	65,486,719	1600 (\$2.N); 1656 (\$5.N) - 11/3/14	2,269,671	6.25	6.5	345,144	4,823,896	92,098	958,406	1,336,742	550	700	4,908,320	321	15	1,013,337	1,669,728	97,535	4,560,744	178	203	561,387	753,046	358,980	21	89,235,751	3.42	
11/15/2014	61,745,521	1649 (\$5.N) - 11/13/14	2,172,758	6.75	7	326,413	4,582,139	86,975	936,682	1,604,425	900	1,100	1,863,118	20	26	471,023	1,587,677	91,661	2,341,252	40	50	329,995	730,482	325,005	15	79,195,125	3.04	
11/22/2014	66,353,583	1591 (\$2.N); 1659 (\$5.N); 1650 (\$5.N) - 11/17/14	2,199,718	7.25	7.5	334,361	4,639,564	87,768	933,490	851,281	200	225	2,013,021	35	43	503,022	1,588,603	91,235	2,470,536	60	70	341,955	728,436	325,095	18	83,461,667	3.20	
weekly change	7.5%		1.2%			2.4%	1.3%	0.9%	-0.3%	-46.9%			8.0%			6.8%	0.1%	-0.5%	5.5%			3.6%	-0.3%	0.0%		0.0%		
SALES			SALES			SALES	SALES	SALES	SALES	SALES	SALES	SALES	SALES	SALES	SALES	SALES	SALES	SALES	SALES	SALES	SALES	SALES	SALES	SALES	SALES	SALES	% of Sales	
Calendar Year to date	2,960,098,115		118,565,061			17,148,090	227,121,745	4,471,789	46,125,580	51,370,234			133,445,866			30,900,976	74,654,822	4,592,846	165,696,091			21,057,834	39,844,007	1,851,850		3,896,944,906	100.0%	
Fiscal Year to date 2015	739,995,839		27,305,548			4,114,527	56,412,460	1,085,210	11,326,699	13,135,689			37,929,832			8,523,410	18,872,652	1,140,665	41,361,975			5,347,897	9,066,210	1,851,850		977,470,463	100.0%	
*Full week includes 1 day from FY14																												