



## *WEEKLY SALES SUMMARY*

Unaudited

**Week Ending: 11/20/2021**

**Texas Lottery Commission  
Fiscal Year to Date Sales Comparison  
Unaudited**

Through the Week Ending: 11/20/2021 (12 weeks)

Sales by Game	FY 2020*	FY 2021**	FY 2022	\$ Change		% Change	
				FY 2022 to FY 2020	FY 2022 to FY 2021 to	FY 2022 to FY 2020	FY 2022 to FY 2021 to
Scratch Tickets	\$ 1,080,664,116	\$ 1,336,897,749	\$ 1,424,569,569	\$ 343,905,453	\$ 87,671,820	31.8%	6.6%
Lotto Texas	25,074,405	39,314,026	29,047,837	3,973,432	-10,266,189	15.8%	-26.1%
Lotto Extra	6,472,825	11,050,430	9,041,238	2,568,413	-2,009,192	39.7%	-18.2%
Pick 3	54,337,509	61,224,218	60,667,781	6,330,272	-556,437	11.6%	-0.9%
Pick 3 Fireball	3,845,606	5,142,299	5,532,769	1,687,163	390,470	43.9%	7.6%
Cash Five	10,227,198	11,095,039	11,084,406	857,208	-10,633	8.4%	-0.1%
Texas Two Step	13,000,033	14,490,261	14,237,722	1,237,689	-252,539	9.5%	-1.7%
Mega Millions	43,165,226	39,352,816	47,436,136	4,270,910	8,083,320	9.9%	20.5%
Megaplier	7,299,599	7,162,109	8,668,792	1,369,193	1,506,683	18.8%	21.0%
MM Just the Jackpot	179,415	164,787	184,590	5,175	19,803	2.9%	12.0%
Daily 4	25,298,080	26,521,905	26,088,980	790,900	-432,925	3.1%	-1.6%
Daily 4 Fireball	3,329,563	4,114,073	4,803,529	1,473,967	689,457	44.3%	16.8%
Powerball	37,580,481	40,279,297	90,540,651	52,960,170	50,261,354	140.9%	124.8%
Power Play	6,565,863	7,363,335	15,866,932	9,301,069	8,503,597	141.7%	115.5%
All or Nothing	7,741,697	8,825,854	9,524,836	1,783,139	698,982	23.0%	7.9%
<b>Total</b>	<b>\$ 1,324,781,615</b>	<b>\$ 1,612,998,197</b>	<b>\$ 1,757,295,767</b>	<b>\$ 432,514,153</b>	<b>\$ 144,297,571</b>	<b>32.6%</b>	<b>8.9%</b>

\* 3 extra days

\*\*1 extra day

**Texas Lottery Commission**  
**Fiscal Year Over Year Change in Sales**  
**Unaudited**  
**FY 2022 Compared to FY 2021**

		SCRATCH TICKETS				DRAW GAMES				TOTAL SALES			
Week	FY 2022 Week Ending	FY 2022	FY 2021	Difference	% change - Cumulative Sales	FY 2022	FY 2021	Difference	% change - Cumulative Sales	FY 2022	FY 2021	Difference	% change - Cumulative Sales
1	9/4/2021*	\$73,465,895	\$88,381,162	(\$14,915,267)	-16.9%	\$19,754,024	\$22,327,441	(\$2,573,417)	-11.5%	\$93,219,919	\$110,708,603	(\$17,488,684)	-15.8%
2	9/11/2021	\$117,404,128	\$115,145,117	\$2,259,011	2.0%	\$30,567,724	\$25,865,986	\$4,701,738	18.2%	\$147,971,852	\$141,011,103	\$6,960,749	4.9%
3	9/18/2021	\$121,522,543	\$117,098,316	\$4,424,227	3.8%	\$34,044,343	\$25,689,861	\$8,354,482	32.5%	\$155,566,886	\$142,788,177	\$12,778,709	8.9%
4	9/25/2021	\$121,751,048	\$113,153,550	\$8,597,498	7.6%	\$33,618,247	\$24,320,273	\$9,297,974	38.2%	\$155,369,295	\$137,473,823	\$17,895,472	13.0%
5	10/2/2021	\$127,128,919	\$114,375,276	\$12,753,643	11.2%	\$41,420,853	\$23,460,330	\$17,960,523	76.6%	\$168,549,772	\$137,835,606	\$30,714,166	22.3%
6	10/9/2021	\$121,962,687	\$114,802,883	\$7,159,804	6.2%	\$31,994,174	\$21,716,732	\$10,277,442	47.3%	\$153,956,861	\$136,519,615	\$17,437,246	12.8%
7	10/16/2021	\$121,035,307	\$113,280,669	\$7,754,638	6.8%	\$23,150,459	\$20,664,725	\$2,485,734	12.0%	\$144,185,766	\$133,945,394	\$10,240,372	7.6%
8	10/23/2021	\$121,223,866	\$111,745,204	\$9,478,662	8.5%	\$23,980,968	\$21,165,208	\$2,815,761	13.3%	\$145,204,834	\$132,910,412	\$12,294,423	9.3%
9	10/30/2021	\$121,466,419	\$111,272,152	\$10,194,267	9.2%	\$22,663,805	\$22,136,334	\$527,471	2.4%	\$144,130,224	\$133,408,486	\$10,721,738	8.0%
10	11/6/2021	\$123,385,510	\$113,620,007	\$9,765,503	8.6%	\$23,377,828	\$22,606,708	\$771,120	3.4%	\$146,763,338	\$136,226,715	\$10,536,623	7.7%
11	11/13/2021	\$124,592,327	\$109,577,081	\$15,015,246	13.7%	\$23,964,090	\$22,749,434	\$1,214,656	5.3%	\$148,556,417	\$132,326,515	\$16,229,902	12.3%
12	11/20/2021	\$129,630,920	\$114,446,332	\$15,184,588	13.3%	\$24,189,686	\$23,397,417	\$792,269	3.4%	\$153,820,606	\$137,843,749	\$15,976,857	11.6%
13	11/27/2021		\$106,113,701				\$23,890,237				\$130,003,938		
14	12/4/2021		\$111,508,837				\$26,132,516				\$137,641,353		
15	12/11/2021		\$111,156,442				\$26,432,394				\$137,588,836		
16	12/18/2021		\$112,212,350				\$27,895,989				\$140,108,339		
17	12/25/2021		\$119,456,586				\$30,653,848				\$150,110,434		
18	1/1/2022		\$127,122,270				\$38,528,413				\$165,650,683		
19	1/8/2022		\$133,494,933				\$57,484,861				\$190,979,794		
20	1/15/2022		\$127,542,833				\$87,788,743				\$215,331,576		
21	1/22/2022		\$130,328,004				\$97,504,542				\$227,832,546		
22	1/29/2022		\$130,076,595				\$24,692,518				\$154,769,113		
23	2/5/2022		\$136,640,103				\$24,693,211				\$161,333,314		
24	2/12/2022		\$124,939,795				\$23,636,934				\$148,576,729		
25	2/19/2022		\$75,402,427				\$13,683,523				\$89,085,950		
26	2/26/2022		\$126,573,041				\$23,389,855				\$149,962,896		
27	3/5/2022		\$133,200,697				\$25,627,875				\$158,828,572		
28	3/12/2022		\$134,601,912				\$26,650,604				\$161,252,516		
29	3/19/2022		\$153,635,044				\$27,014,869				\$180,649,913		
30	3/26/2022		\$156,511,371				\$27,238,714				\$183,750,085		
31	4/2/2022		\$158,758,180				\$25,817,113				\$184,575,293		
32	4/9/2022		\$152,261,121				\$25,896,084				\$178,157,205		
33	4/16/2022		\$149,946,632				\$26,330,496				\$176,277,128		
34	4/23/2022		\$147,956,805				\$26,462,493				\$174,419,298		
35	4/30/2022		\$149,268,466				\$28,003,294				\$177,271,760		
36	5/7/2022		\$144,423,251				\$29,055,332				\$173,478,583		
37	5/14/2022		\$143,355,893				\$31,496,103				\$174,851,996		
38	5/21/2022		\$141,392,410				\$35,173,326				\$176,565,736		
39	5/28/2022		\$137,051,585				\$25,478,731				\$162,530,316		
40	6/4/2022		\$138,140,582				\$25,330,096				\$163,470,678		
41	6/11/2022		\$131,984,128				\$21,831,386				\$153,815,514		
42	6/18/2022		\$129,880,069				\$21,982,398				\$151,862,467		

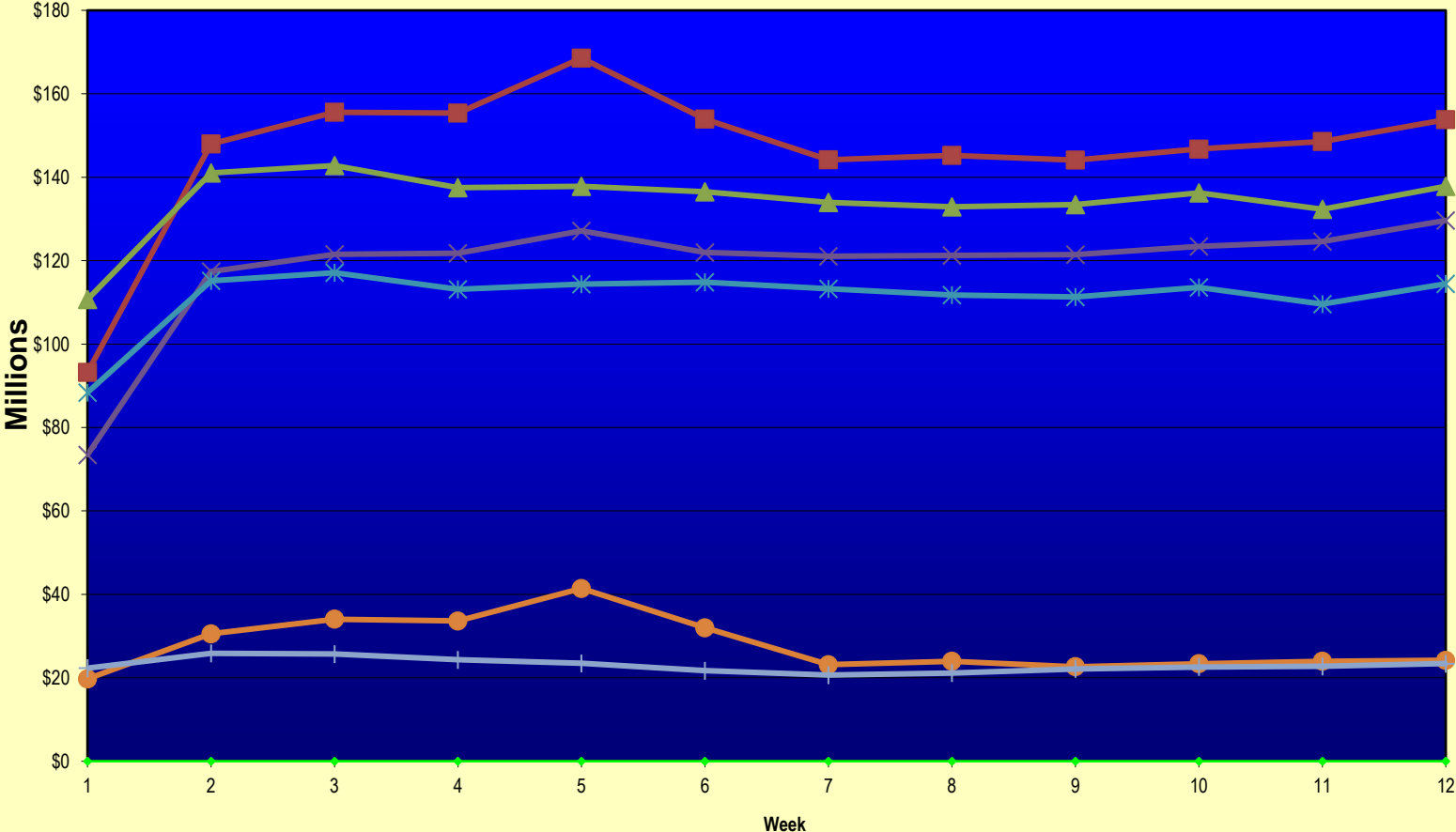
Texas Lottery Commission  
**Fiscal Year Over Year Change in Sales**  
 Unaudited  
 FY 2022 Compared to FY 2021

		SCRATCH TICKETS				DRAW GAMES				TOTAL SALES			
FY 2022		FY 2022	FY 2021	Difference	% change - Cumulative Sales	FY 2022	FY 2021	Difference	% change - Cumulative Sales	FY 2022	FY 2021	Difference	% change - Cumulative Sales
Week	Week Ending												
43	6/25/2022		\$128,432,805				\$22,386,397				\$150,819,202		
44	7/2/2022		\$134,775,705				\$23,967,723				\$158,743,428		
45	7/9/2022		\$127,718,775				\$23,105,336				\$150,824,111		
46	7/16/2022		\$127,681,286				\$23,671,929				\$151,353,215		
47	7/23/2022		\$124,610,457				\$24,186,190				\$148,796,647		
48	7/30/2022		\$126,437,509				\$25,623,636				\$152,061,145		
49	8/6/2022		\$125,100,277				\$25,280,445				\$150,380,722		
50	8/13/2022		\$121,350,965				\$25,593,011				\$146,943,976		
51	8/20/2022		\$121,080,932				\$25,800,409				\$146,881,341		
52	8/27/2022		\$118,866,934				\$28,610,926				\$147,477,860		
	8/31/2022**		\$49,085,562				\$10,105,437				\$59,190,999		
Total thru Current Week		\$1,424,569,569	\$1,336,897,749	\$87,671,820	6.6%	\$332,726,198	\$276,100,448	\$56,625,751	20.5%	\$1,757,295,767	\$1,612,998,197	\$144,297,571	8.9%
Fiscal Year Total		\$1,424,569,569	\$6,616,975,019			\$332,726,198	\$1,490,228,375			\$1,757,295,767	\$8,107,203,394		

\* FY 22 includes 4 days; FY 21 includes 5 days

\*\* FY 22 includes 4 days; FY 21 includes 3 days

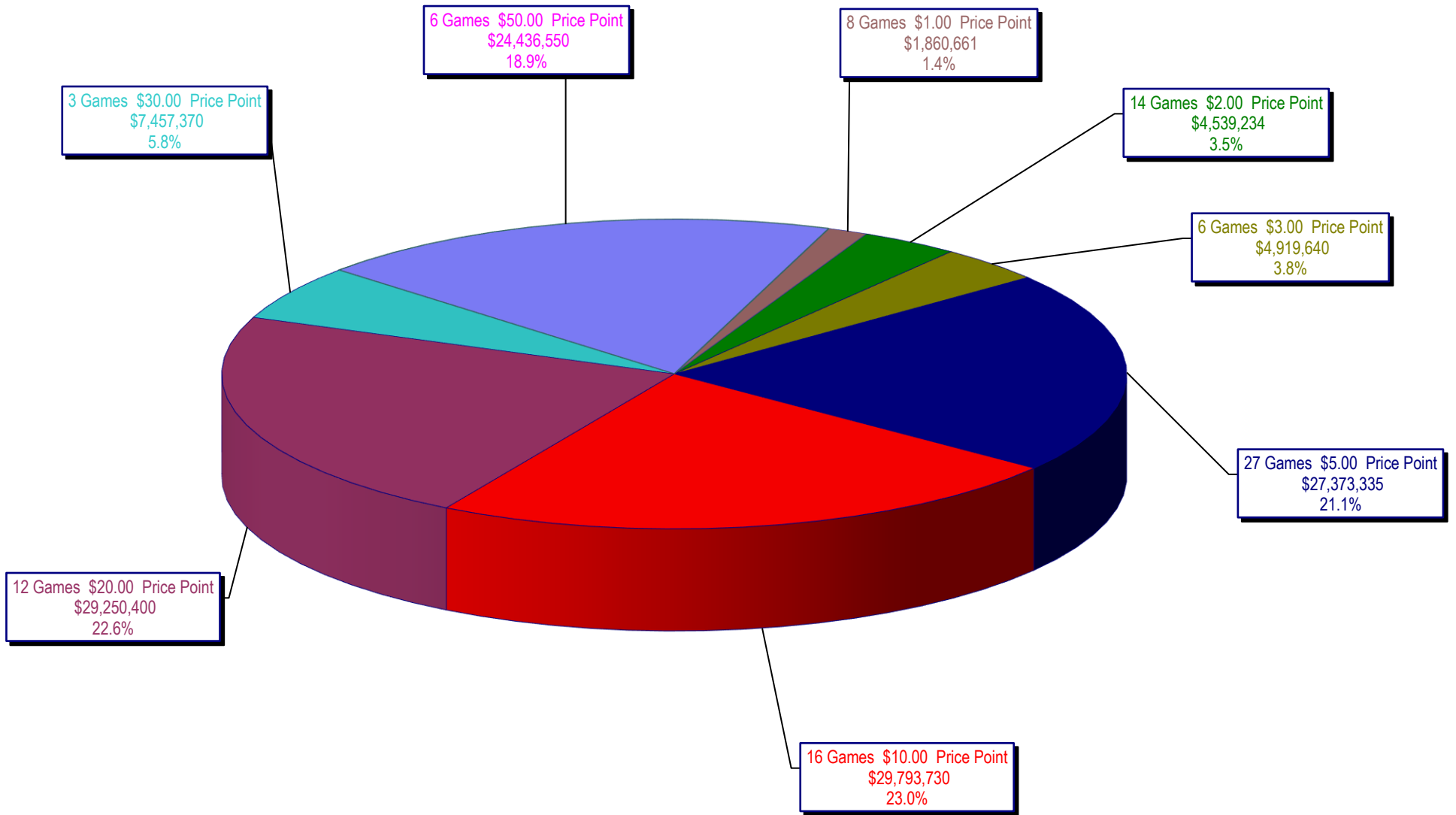
### Texas Lottery Commission Fiscal Year Over Year Change in Sales



◆ Week   
 ■ Total Sales 2022   
 ▲ Total Sales 2021   
 × Scratch Tickets 2022   
 ✱ Scratch Tickets 2021   
 ● Draw Games 2022   
 + Draw Games 2021

Note: Report is prepared on a Fiscal Year basis.

Texas Lottery Commission  
Scratch Ticket Sales  
For the Week Ending 11/20/2021  
(Unaudited)



**Texas Lottery Commission**  
**All Game Sales**  
**For the Week Ending 11/20/2021**  
**(Unaudited)**

