



WEEKLY SALES SUMMARY

Unaudited

[Week Ending: 11/28/2009](#)

Texas Lottery Commission
Fiscal Year to Date Sales Comparison
Unaudited

Through the week ending 11/28/2009 (13 weeks)

Sales by Game	FY 2008 *	FY 2009 **	FY 2010	\$ Change		% Change	
				FY 2010 to FY 2008	FY 2010 to FY 2009 to	FY 2010 to FY 2008	FY 2010 to FY 2009
Instants	\$ 683,666,946	\$ 644,650,905	\$ 657,426,899	\$ -26,240,047	\$ 12,775,994	-3.8%	2.0%
Lotto Texas	54,660,660	44,160,851	72,183,898	17,523,238	28,023,047	32.1%	63.5%
Pick 3	71,201,477	66,856,943	65,161,002	-6,040,475	-1,695,941	-8.5%	-2.5%
Pick 3 Sum It Up	655,076	1,427,975	1,307,795	652,719	-120,180	-	-8.4%
Cash 5	19,595,211	17,274,241	16,436,288	-3,158,923	-837,953	-16.1%	-4.9%
Texas Two Step	10,811,378	11,377,347	10,468,144	-343,234	-909,203	-3.2%	-8.0%
Mega Millions	33,408,698	35,195,591	46,157,331	12,748,633	10,961,741	38.2%	31.1%
Megaplier	8,640,749	8,894,647	10,443,048	1,802,299	1,548,401	20.9%	17.4%
Daily 4	9,903,374	10,105,137	12,444,137	2,540,764	2,339,001	-	23.1%
Daily 4 Sum It Up	2,846,656	1,332,551	1,216,748	-1,629,908	-115,803	-	-8.7%
Total	\$ 895,390,224	\$ 841,276,186	\$ 893,245,290	\$ -2,144,934	\$ 51,969,104	-0.2%	6.2%

* 3 extra days ** 1 extra day

Texas Lottery Commission
 Fiscal Year to Date Cumulative Average Sales Comparison
 Unaudited

Through the week ending 11/28/2009 (13 weeks)

Sales by Game	FY 2008	FY 2009	FY 2010
Instants	\$ 7,431,162	\$ 7,162,788	\$ 7,386,819
Lotto Texas	594,138	490,676	811,055
Pick 3	773,929	742,855	732,146
Pick 3 Sum It Up	7,120	15,866	14,694
Cash 5	212,991	191,936	184,677
Texas Two Step	117,515	126,415	117,620
Mega Millions	363,138	391,062	518,622
Megaplier	93,921	98,829	117,338
Daily 4	107,645	112,279	139,822
Daily 4 Sum It Up	30,942	14,806	13,671
Total	\$ <u>9,732,502</u>	\$ <u>9,347,513</u>	\$ <u>10,036,464</u>
	thru 12/01/2007 92 days	thru 11/29/2008 90 days	thru 11/28/2009 89 days

Texas Lottery Commission
Fiscal Year Over Year Change in Sales
Unaudited
FY 2010 Compared to FY 2009

Week	FY 2010 Week Ending	INSTANT TICKETS				ON-LINE GAMES				TOTAL SALES			
		FY 2010	FY 2009	Difference	% change - Cumulative Sales	FY 2010	FY 2009	Difference	% change - Cumulative Sales	FY 2010	FY 2009	Difference	% change - Cumulative Sales
1	9/5/2009**	\$40,148,241	\$44,890,104	(\$4,741,863)	-10.6%	\$15,859,194	\$14,722,011	\$1,137,184	7.7%	\$56,007,435	\$59,612,115	(\$3,604,680)	-6.0%
2	9/12/2009	\$49,896,100	\$46,309,551	\$3,586,549	7.7%	\$18,206,315	\$13,704,860	\$4,501,455	32.8%	\$68,102,415	\$60,014,411	\$8,088,004	13.5%
3	9/19/2009	\$50,971,937	\$42,923,171	\$8,048,766	18.8%	\$18,859,622	\$12,291,263	\$6,568,359	53.4%	\$69,831,559	\$55,214,434	\$14,617,125	26.5%
4	9/26/2009	\$49,975,243	\$47,042,801	\$2,932,442	6.2%	\$19,345,435	\$14,222,339	\$5,123,096	36.0%	\$69,320,678	\$61,265,140	\$8,055,538	13.1%
5	10/3/2009	\$52,283,569	\$50,747,162	\$1,536,407	3.0%	\$20,991,695	\$15,784,472	\$5,207,223	33.0%	\$73,275,264	\$66,531,634	\$6,743,630	10.1%
6	10/10/2009	\$52,238,261	\$49,763,789	\$2,474,472	5.0%	\$21,547,439	\$15,622,498	\$5,924,941	37.9%	\$73,785,700	\$65,386,287	\$8,399,413	12.8%
7	10/17/2009	\$50,806,599	\$49,299,053	\$1,507,546	3.1%	\$23,114,594	\$15,167,940	\$7,946,654	52.4%	\$73,921,193	\$64,466,993	\$9,454,200	14.7%
8	10/24/2009	\$50,731,592	\$49,977,581	\$754,011	1.5%	\$17,274,411	\$14,525,843	\$2,748,568	18.9%	\$68,006,003	\$64,503,424	\$3,502,579	5.4%
9	10/31/2009	\$50,684,853	\$50,346,542	\$338,311	0.7%	\$15,710,720	\$14,838,845	\$871,876	5.9%	\$66,395,573	\$65,185,387	\$1,210,187	1.9%
10	11/7/2009	\$54,633,928	\$54,860,087	(\$226,159)	-0.4%	\$16,961,611	\$16,057,069	\$904,542	5.6%	\$71,595,539	\$70,917,156	\$678,383	1.0%
11	11/14/2009	\$52,109,218	\$53,484,812	(\$1,375,594)	-2.6%	\$16,407,349	\$15,829,819	\$577,530	3.6%	\$68,516,567	\$69,314,631	(\$798,064)	-1.2%
12	11/21/2009	\$52,427,881	\$52,806,511	(\$378,630)	-0.7%	\$15,829,561	\$16,460,748	(\$631,187)	-3.8%	\$68,257,442	\$69,267,259	(\$1,009,817)	-1.5%
13	11/28/2009	\$50,519,477	\$52,199,741	(\$1,680,264)	-3.2%	\$15,710,447	\$17,397,576	(\$1,687,129)	-9.7%	\$66,229,924	\$69,597,317	(\$3,367,393)	-4.8%
14	12/5/2009		\$56,731,851				\$20,363,789				\$77,095,640		
15	12/12/2009		\$54,109,617				\$22,952,228				\$77,061,845		
16	12/19/2009		\$55,777,328				\$15,833,517				\$71,610,845		
17	12/26/2009		\$57,597,885				\$15,851,771				\$73,449,656		
18	1/2/2010		\$57,582,115				\$16,900,028				\$74,482,143		
19	1/9/2010		\$54,250,945				\$16,203,220				\$70,454,165		
20	1/16/2010		\$51,625,339				\$15,701,605				\$67,326,944		
21	1/23/2010		\$52,789,573				\$15,897,473				\$68,687,046		
22	1/30/2010		\$55,453,471				\$16,908,272				\$72,361,743		
23	2/6/2010		\$62,247,711				\$18,354,314				\$80,602,025		
24	2/13/2010		\$60,509,056				\$19,218,078				\$79,727,134		
25	2/20/2010		\$59,194,623				\$21,098,199				\$80,292,822		
26	2/27/2010		\$58,857,216				\$24,116,924				\$82,974,140		
27	3/6/2010		\$59,552,257				\$23,995,136				\$83,547,393		
28	3/13/2010		\$53,754,084				\$18,769,831				\$72,523,915		
29	3/20/2010		\$52,581,107				\$15,903,038				\$68,484,145		
30	3/27/2010		\$52,560,961				\$16,094,933				\$68,655,894		
31	4/3/2010		\$56,249,759				\$17,357,002				\$73,606,761		
32	4/10/2010		\$54,440,987				\$17,660,600				\$72,101,587		
33	4/17/2010		\$52,755,834				\$18,469,585				\$71,225,419		
34	4/24/2010		\$51,450,968				\$20,216,898				\$71,667,866		
35	5/1/2010		\$52,327,090				\$23,520,573				\$75,847,663		
36	5/8/2010		\$53,214,412				\$16,241,207				\$69,455,619		
37	5/15/2010		\$50,785,227				\$15,990,544				\$66,775,771		
38	5/22/2010		\$56,567,077				\$15,874,447				\$72,441,524		
39	5/29/2010		\$55,359,239				\$16,040,196				\$71,399,435		
40	6/5/2010		\$60,250,125				\$16,301,599				\$76,551,724		

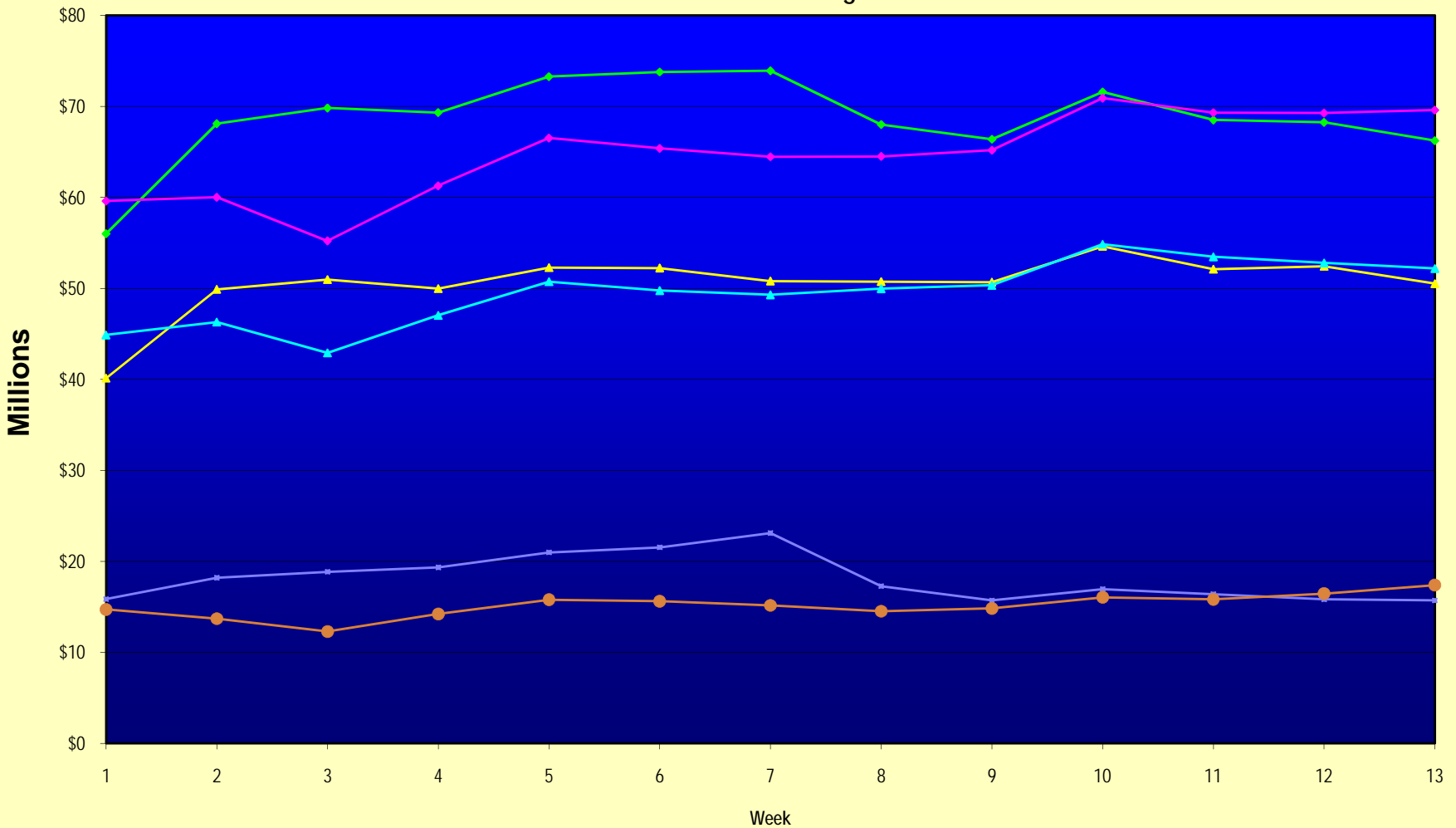
Note: Week 1 is not a full week of sales as this report is prepared on a Fiscal Year basis.

Texas Lottery Commission
Fiscal Year Over Year Change in Sales
Unaudited
FY 2010 Compared to FY 2009

Week	FY 2010 Week Ending	INSTANT TICKETS				ON-LINE GAMES				TOTAL SALES			
		FY 2010	FY 2009	Difference	% change - Cumulative Sales	FY 2010	FY 2009	Difference	% change - Cumulative Sales	FY 2010	FY 2009	Difference	% change - Cumulative Sales
41	6/12/2010		\$54,979,517				\$16,143,215				\$71,122,732		
42	6/19/2010		\$53,109,433				\$16,357,924				\$69,467,357		
43	6/26/2010		\$53,431,083				\$16,786,203				\$70,217,286		
44	7/3/2010		\$55,518,615				\$18,292,421				\$73,811,036		
45	7/10/2010		\$53,004,390				\$17,842,530				\$70,846,920		
46	7/17/2010		\$52,498,940				\$16,138,341				\$68,637,281		
47	7/24/2010		\$51,550,731				\$16,748,137				\$68,298,868		
48	7/31/2010		\$51,893,977				\$18,065,180				\$69,959,157		
49	8/7/2010		\$54,506,395				\$19,258,117				\$73,764,512		
50	8/14/2010		\$51,766,530				\$20,828,293				\$72,594,823		
51	8/21/2010		\$51,909,040				\$24,913,396				\$76,822,436		
52	8/28/2010		\$50,848,517				\$35,661,563				\$86,510,080		
53			\$13,288,367				\$3,085,816				\$16,374,183		
Total thru Current Week		\$657,426,899	\$644,650,905	\$12,775,994	2.0%	\$235,818,391	\$196,625,281	\$39,193,110	19.9%	\$893,245,290	\$841,276,186	\$51,969,104	6.2%
Fiscal Year Total		\$657,426,899	\$2,791,532,297			\$235,818,391	\$928,581,414			\$893,245,290	\$3,720,113,711		

** FY 2010 includes 5 days; FY 2009 includes 6 days

Texas Lottery Commission Fiscal Year Over Year Change in Sales



Note: Week 1 is not a full week of sales as this report is prepared on a Fiscal Year basis.

Texas Lottery Commission
Instant Tickets by Price Point
Sales, Prize Expense, Sales Contribution and Payout Percentage With Year Over Year Changes
Unaudited

Fiscal Year	Price Point	# of Active Games	FY Sales	% of Instant Ticket Sales	Year over Year Change in Sales	FY Prize Expense	Year over Year Change in Prize Expense	FY Sales Contribution	Year over Year Change in Contribution	Average Prize Payout %	Year over Year Change in Payout %
2009	\$1.00	32	54,751,336	8.5%		32,997,571		21,753,765		60.3%	0.3%
thru	\$2.00	28	112,171,478	17.4%		72,756,400		39,415,078		64.9%	-0.6%
11/29/2008	\$3.00	13	72,244,035	11.2%		47,488,460		24,755,575		65.7%	0.0%
	\$5.00	29	193,578,409	30.0%		131,662,486		61,915,923		68.0%	0.1%
	\$7.00	6	26,739,342	4.1%		18,189,363		8,549,979		68.0%	0.0%
	\$10.00	12	85,059,810	13.2%		59,531,921		25,527,889		70.0%	0.0%
	\$20.00	7	63,750,700	9.9%		45,756,172		17,994,528		71.8%	0.0%
	\$25.00	1	2,381,575	0.4%		1,732,224		649,351		72.7%	0.2%
	\$30.00	3	5,999,370	0.9%		4,348,747		1,650,623		72.5%	0.1%
	\$50.00	3	27,974,850	4.3%		20,231,023		7,743,827		72.3%	0.2%
Total		134	\$644,650,905			\$434,694,366		\$209,956,539		67.4%	-0.3%
2010	\$1.00	27	55,016,910	8.4%		33,071,597		21,945,313		60.1%	0.0%
thru	\$2.00	58	95,157,068	14.5%		63,279,225		31,877,843		66.5%	2.1%
11/28/2009	\$3.00	14	82,694,304	12.6%		54,357,097		28,337,207		65.7%	0.2%
	\$5.00	31	181,285,453	27.6%		123,102,675		58,182,778		67.9%	-0.2%
	\$7.00	5	27,314,784	4.2%		18,572,445		8,742,339		68.0%	0.0%
	\$10.00	12	96,722,890	14.7%		67,656,050		29,066,840		69.9%	0.0%
	\$20.00	5	101,023,140	15.4%		75,388,839		25,634,301		74.6%	2.0%
	\$25.00	0	-	0.0%		-		-		0.0%	-100.0%
	\$30.00	0	-	0.0%		-		-		0.0%	-100.0%
	\$50.00	2	18,212,350	2.8%		14,108,418		4,103,932		77.5%	3.9%
Total		154	\$657,426,899			\$449,536,348		\$207,890,551		68.4%	0.9%
Variance	\$1.00	-5	265,574		0.5%	74,026	0.2%	191,548	0.9%	-0.16%	
2010 to	\$2.00	30	-17,014,410		-15.2%	-9,477,174	-13.0%	-7,537,236	-19.1%	1.64%	
2009	\$3.00	1	10,450,269		14.5%	6,868,638	14.5%	3,581,631	14.5%	0.00%	
	\$5.00	2	-12,292,956		-6.4%	-8,559,811	-6.5%	-3,733,145	-6.0%	-0.11%	
	\$7.00	-1	575,442		2.2%	383,082	2.1%	192,360	2.2%	-0.03%	
	\$10.00	0	11,663,080		13.7%	8,124,129	13.6%	3,538,951	13.9%	-0.04%	
	\$20.00	-2	37,272,440		58.5%	29,632,667	64.8%	7,639,773	42.5%	2.85%	
	\$25.00	-1	-2,381,575		-100.0%	-1,732,224	-100.0%	-649,351	-100.0%	-72.73%	
	\$30.00	-3	-5,999,370		-100.0%	-4,348,747	-100.0%	-1,650,623	-100.0%	-72.49%	
	\$50.00	-1	-9,762,500		-34.9%	-6,122,604	-30.3%	-3,639,896	-47.0%	5.15%	
Total		20	\$12,775,994		2.0%	\$14,841,982	3.4%	-\$2,065,986	-1.0%	0.95%	

Texas Lottery Commission
Instant Tickets by Price Point
Sales, Prize Expense, Sales Contribution and Payout Percentage With Year Over Year Changes
 Unaudited

Notes - Instant Ticket Variances

		FY 2010		FY 2009		Difference
Sales	\$1 - \$7		\$441,468,519		\$459,484,600	-\$18,016,081
Prize Exp.	\$1 - \$7		\$292,383,040		\$303,094,279	-\$10,711,239
Sales Cont.	\$1 - \$7		\$149,085,479		\$156,390,321	-\$7,304,842
Prize Exp. %	\$1 - \$7		66.2%		66.0%	0.3%
		FY 2010		FY 2009		Difference
Sales	\$10 - \$50		\$215,958,380		\$185,166,305	\$30,792,075
Prize Exp.	\$10 - \$50		\$157,153,308		\$131,600,087	\$25,553,221
Sales Cont.	\$10 - \$50		\$58,805,072		\$53,566,218	\$5,238,854
Prize Exp. %	\$10 - \$50		72.8%		71.1%	1.7%
		FY 2010		FY 2009		Difference
Sales	Instant		\$657,426,899		\$644,650,905	\$12,775,994
Prize Exp.	Instant		\$449,536,348		\$434,694,366	\$14,841,982
Sales Cont.	Instant		\$207,890,551		\$209,956,539	-\$2,065,988
Prize Exp. %	Instant		68.4%		67.4%	0.9%

		FY 2010		FY 2009		Difference
Sales	\$1 - \$10		\$538,191,409		\$544,544,410	-\$6,353,001
Prize Exp.	\$1 - \$10		\$360,039,090		\$362,626,200	-\$2,587,110
Sales Cont.	\$1 - \$10		\$178,152,319		\$181,918,210	-\$3,765,891
Prize Exp. %	\$1 - \$10		66.9%		66.6%	0.3%
		FY 2010		FY 2009		Difference
Sales	\$20 - \$50		\$119,235,490		\$100,106,495	\$19,128,995
Prize Exp.	\$20 - \$50		\$89,497,257		\$72,068,166	\$17,429,091
Sales Cont.	\$20 - \$50		\$29,738,233		\$28,038,329	\$1,699,904
Prize Exp. %	\$20 - \$50		75.1%		72.0%	3.1%
		FY 2010		FY 2009		Difference
Sales	Instant		\$657,426,899		\$644,650,905	\$12,775,994
Prize Exp.	Instant		\$449,536,348		\$434,694,366	\$14,841,982
Sales Cont.	Instant		\$207,890,551		\$209,956,539	-\$2,065,988
Prize Exp. %	Instant		68.4%		67.4%	0.9%

Texas Lottery Commission
 Weekly Sales Summary
 & Comparison to Previous Week
 Unaudited

	Week Ending 11/28/2009		Week Ending 11/21/2009			
	<u>THIS WEEK</u>	% of Sales	<u>LAST WEEK</u>	% of Sales	<u>\$ change</u>	<u>% change</u>
Total Sales	<u>\$66,229,924</u>		<u>\$68,257,442</u>		<u>-\$2,027,518</u>	-2.97%
Instant Tickets	<u>\$50,519,477</u>	76.3%	<u>\$52,427,881</u>	76.8%	<u>-\$1,908,404</u>	-3.64%
Lotto Texas	\$3,966,034	6.0%	\$3,943,958	5.8%	\$22,076	0.56%
Pick 3	\$5,043,210	7.6%	\$5,123,802	7.5%	-\$80,592	-1.57%
Pick 3 Sum It Up	\$102,784	0.2%	\$104,705	0.2%	-\$1,922	-1.84%
Cash 5	\$1,202,798	1.8%	\$1,255,026	1.8%	-\$52,228	-4.16%
Texas Two Step	\$693,774	1.0%	\$797,796	1.2%	-\$104,022	-13.04%
Mega Millions	\$2,932,809	4.4%	\$2,834,318	4.2%	\$98,491	3.47%
Megaplier	\$691,194	1.0%	\$687,221	1.0%	\$3,973	0.58%
Daily 4	\$985,337	1.5%	\$990,042	1.5%	-\$4,706	-0.48%
Daily 4 Sum It Up	\$92,508	0.1%	\$92,693	0.1%	-\$185	-0.20%
Total Online Sales	<u>\$15,710,447</u>		<u>\$15,829,561</u>		<u>-\$119,114</u>	-0.75%

* Totals may not sum due to rounding.

Texas Lottery Commission
Weekly Sales Summary
Unaudited

INSTANT TICKETS
TOP TEN SELLING GAMES

For the Week Ending : 11/28/2009

Rank	Price Point	Game	Sales (Millions)
1	\$ 20	\$500,000,000 BLOCKBUSTER	\$ 4.015
2	\$ 20	MERRY MILLIONAIRE	\$ 2.793
3	\$ 10	JINGLE JUMBO BUCKS	\$ 2.772
4	\$ 5	\$50,000 CASH WINFALL	\$ 2.573
5	\$ 5	MERRY MONEY	\$ 2.499
6	\$ 5	WINTER WINNINGS	\$ 2.293
7	\$ 7	SPARKLING 7'S	\$ 1.733
8	\$ 3	BONUS WORD CASHWORD	\$ 1.599
9	\$ 3	BONUS CASHWORD	\$ 1.592
10	\$ 10	BIG PAYOUT	\$ 1.483

Texas Lottery Commission
Prize Payout Tracking Report
Unaudited

Through Week Ending 11/28/2009

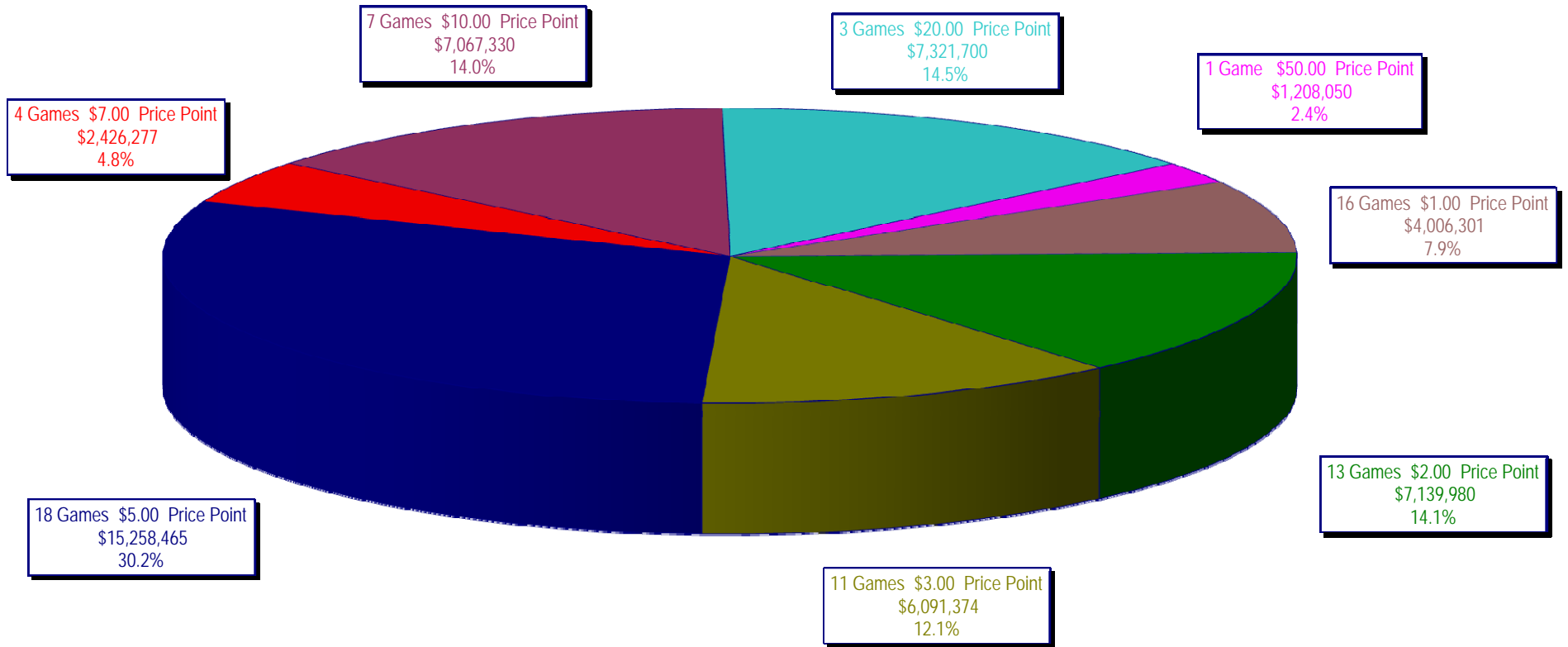
On-Line Sales

		FY Sales Through Week Ending 11/28/2009		FY Prize Expense Through Week Ending 11/28/2009	Actual* Prize Payout	Base Payout (Prize Pool)
Lotto	\$	72,183,898	\$	36,115,346	50.03%	50.00%
Pick 3		65,161,002		30,059,790	46.13%	50.00%
Pick 3 Sum It Up		1,307,795		609,807	46.63%	50.00%
Cash 5		16,436,288		8,924,807	54.30%	50.00%
Texas Two-Step		10,468,144		5,464,853	52.20%	50.00%
Mega Millions		46,157,331		23,409,573	50.72%	50.00%**
Megaplier		10,443,048		3,242,530	31.05%	N/A
Daily 4		12,444,137		6,555,525	52.68%	50.00%
Daily 4-Sum It Up		1,216,748		581,365	47.78%	50.00%
Totals	\$	235,818,391	\$	114,963,595	48.75%	

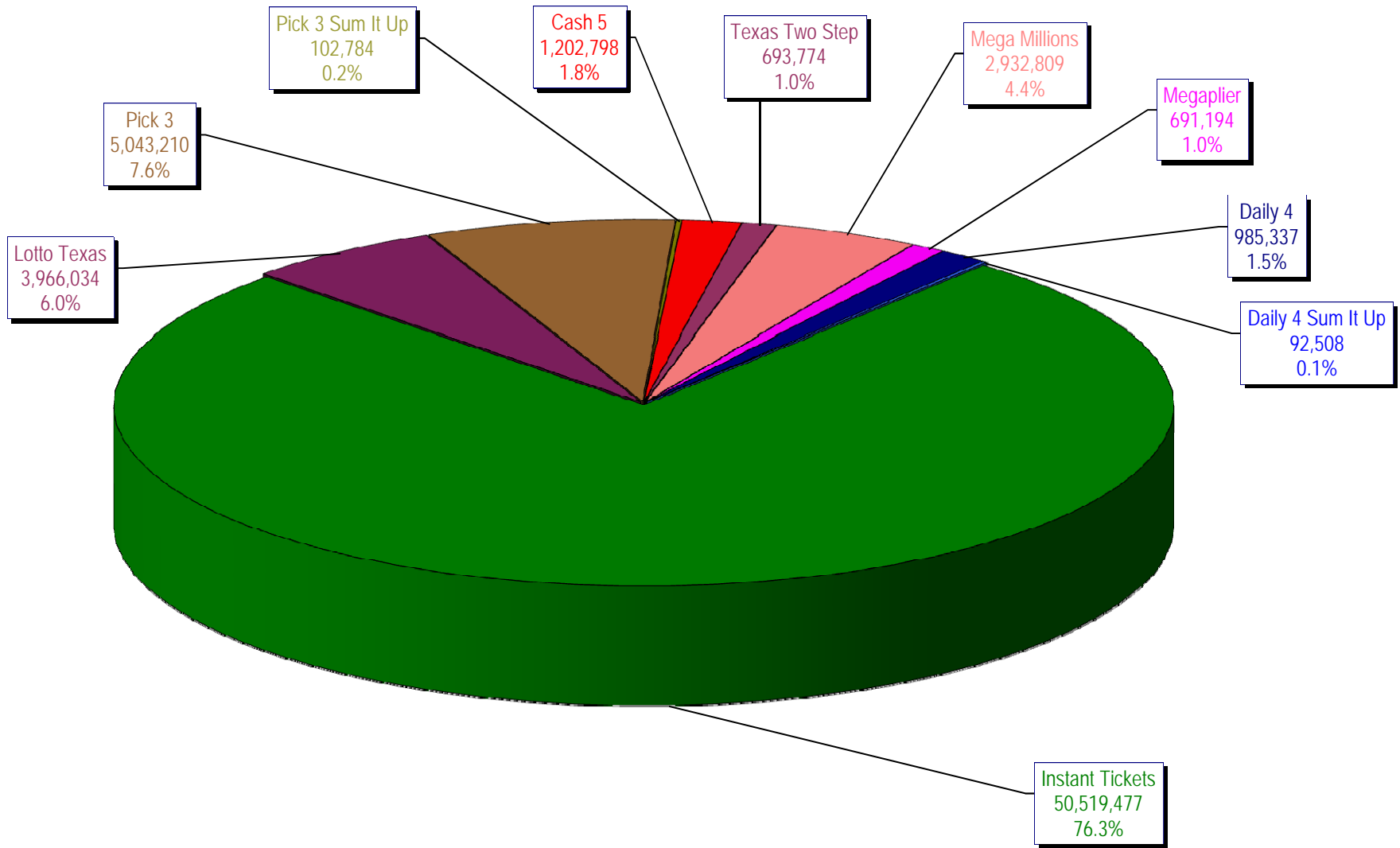
* Before Unclaimed Prizes

** Estimated; depends on # of guaranteed prizes won in Texas

Texas Lottery Commission
Instant Ticket Sales
For the Week Ending 11/28/2009
(Unaudited)



Texas Lottery Commission
All Game Sales
For the Week Ending 11/28/2009
(Unaudited)



Texas Lottery Commission - Weekly Sales Summary for FY 2010 (Unaudited)

Week Ended	Instant Games	New Games & Dates	Lotto Texas	Jackpot W	S	Pick 3	Pick 3 Sum It Up	Cash 5	Texas Two Step	Jackpot M	TH	Mega Millions	Jackpot T	F	Megaplier	Daily 4	Daily 4 Sum It Up	Total	Per Cap.
9/5/2009	53,436,608.00	1183 (\$2.N) - 08/31/09	6,294,287.00	45	47	5,276,229.00	104,886.00	1,338,093.00	1,212,330.00	1.2	200	2,959,401.00	12	12	708,622.00	955,411.00	95,751.00	72,381,618.00	2.98
9/12/2009	49,896,100.00	1200 (\$1.N); 1201 (\$10.N) - 09/07/09	6,426,945.00	49	51	5,109,927.50	104,641.00	1,278,982.00	771,782.00	225	200	2,811,431.00	18	28	693,407.00	918,268.00	90,931.50	68,102,415.00	2.80
9/19/2009	50,971,937.00	1202 (\$3.N); 1185 (\$5.N) - 09/14/09	6,496,645.00	53	55	5,176,010.00	103,700.00	1,295,302.00	803,124.00	200	225	3,164,844.00	38	51	760,088.00	965,671.50	94,237.00	69,831,558.50	2.87
9/26/2009	49,975,243.00	1141 (\$1.N); 1259 (\$3.N) - 09/21/09	6,765,369.00	57	59	4,894,237.50	98,171.00	1,271,129.00	915,249.00	275	400	3,568,088.00	62	75	822,408.00	918,596.00	92,187.50	69,320,678.00	2.85
10/3/2009	52,283,569.00	1203 (\$2.N); 1172 (\$5.N) - 09/28/09	7,003,107.00	61	63	5,156,873.00	102,841.50	1,315,863.00	1,111,913.00	525	650	4,270,019.00	88	105	939,935.00	993,158.50	97,984.50	73,275,263.50	3.01
10/10/2009	52,238,261.00	1205 (\$1.N); 1263 (\$3.N) - 10/05/09	7,061,948.00	64	67	5,050,571.00	102,586.50	1,300,852.00	811,464.00	200	225	5,100,350.00	122	145	1,050,507.00	971,147.50	98,012.50	73,785,699.50	3.03
10/17/2009	50,806,599.00	1187 (\$2.N); 1193 (\$20.N) - 10/12/09	7,262,683.00	70	73	4,990,457.00	99,389.50	1,276,305.00	769,253.00	200	200	6,449,660.00	170	200	1,245,391.00	931,084.00	90,371.00	73,921,192.50	3.04
10/24/2009	50,731,592.00	1188 (\$3.N); 1189 (\$5.N) - 10/19/09	5,785,292.00	76	4	4,845,815.00	93,256.00	1,282,033.00	806,971.00	225	275	2,776,628.00	12	18	663,491.00	931,641.00	89,284.00	68,006,003.00	2.80
10/31/2009	50,684,853.00	1192 (\$10.N); 1186 (\$1.N) - 10/26/09	3,749,006.00	5	6	4,944,409.00	98,542.50	1,289,523.00	815,750.00	375	200	2,988,991.00	28	40	717,574.00	1,006,435.00	100,489.50	66,395,573.00	2.73
11/7/2009	54,633,928.00	1191 (\$7.N) - 11/02/09	3,982,319.00	7	8	5,265,020.50	105,180.50	1,339,215.00	853,140.00	225	275	3,458,403.00	50	63	795,045.00	1,058,564.00	104,724.00	71,595,539.00	2.94
11/14/2009	52,109,218.00	1218 (\$2.N); 1184 (\$5.N) - 11/09/09	3,985,493.00	9	10	5,172,602.50	104,782.00	1,274,573.00	829,607.00	375	200	3,210,618.00	77	12	752,365.00	983,342.50	93,966.00	68,516,567.00	2.82
11/21/2009	52,427,881.00	0	3,943,958.00	11	12	5,123,802.00	104,705.00	1,255,026.00	797,796.00	225	275	2,834,318.00	17	27	687,221.00	990,042.00	92,693.00	68,257,442.00	2.81
11/28/2009	50,519,477.00	1206 (\$1.N); 1190 (\$5.N); 1264 (\$1.N) - 11/23/09	3,966,034.00	13	14	5,043,210.00	102,783.50	1,202,798.00	693,774.00	200	225	2,932,809.00	37	47	691,194.00	985,336.50	92,508.00	66,229,924.00	2.72
weekly change	-3.64%		0.56%			-1.57%	-1.84%	-4.16%	-13.04%			3.47%			0.58%	-0.48%	-0.20%	-2.97%	
	SALES		SALES			SALES	SALES	SALES	SALES			SALES	SALES	SALES	SALES	SALES	SALES	SALES	% of Sales
Startup to date	36,929,545,198.00		10,551,797,445.00			3,648,758,759.50	13,708,870.50	2,206,340,428.00	488,256,075.00			1,187,687,930.45			276,011,335.00	101,494,348.00	14,970,575.00	55,626,704,936.45	100.0%
Calendar Year to date	2,547,641,523.00		212,428,153.00			257,599,260.50	175,670.50	63,601,974.00	47,096,938.00			203,731,026.95			44,143,520.00	45,286,689.50	4,829,767.50	3,426,534,522.95	100.0%
Fiscal Year to date 2010	657,426,899.00		72,183,898.00			65,161,002.00	1,307,795.00	16,436,288.00	10,468,144.00			46,157,331.00			10,443,048.00	12,444,137.00	1,216,748.00	893,245,290.00	100.0%