



WEEKLY SALES SUMMARY

Unaudited

Week Ending: 12/05/2009

Texas Lottery Commission
Fiscal Year to Date Sales Comparison
Unaudited

Through the week ending 12/05/2009 (14 weeks)

Sales by Game	FY 2008 *	FY 2009 **	FY 2010	\$ Change		% Change	
				FY 2010 to FY 2008	FY 2010 to FY 2009 to	FY 2010 to FY 2008	FY 2010 to FY 2009
Instants	\$ 739,369,643	\$ 701,382,756	\$ 711,803,347	\$ -27,566,296	\$ 10,420,591	-3.7%	1.5%
Lotto Texas	59,324,191	47,955,842	76,188,530	16,864,339	28,232,688	28.4%	58.9%
Pick 3	76,597,285	72,609,536	70,554,460	-6,042,825	-2,055,076	-7.9%	-2.8%
Pick 3 Sum It Up	859,950	1,549,638	1,419,237	559,287	-130,402	-	-8.4%
Cash 5	21,073,861	18,690,687	17,724,570	-3,349,291	-966,117	-15.9%	-5.2%
Texas Two Step	11,502,222	12,157,675	11,341,354	-160,868	-816,321	-1.4%	-6.7%
Mega Millions	37,001,361	41,433,946	49,454,817	12,453,456	8,020,872	33.7%	19.4%
Megaplier	9,469,539	10,164,861	11,216,184	1,746,645	1,051,323	18.4%	10.3%
Daily 4	10,758,127	10,986,978	13,507,561	2,749,434	2,520,583	-	22.9%
Daily 4 Sum It Up	3,037,459	1,439,908	1,317,019	-1,720,440	-122,889	-	-8.5%
Total	\$ 968,993,638	\$ 918,371,826	\$ 964,527,079	\$ -4,466,559	\$ 46,155,253	-0.5%	5.0%

* 3 extra days ** 1 extra day

Texas Lottery Commission
 Fiscal Year to Date Cumulative Average Sales Comparison
 Unaudited

Through the week ending 12/05/2009 (14 weeks)

Sales by Game	FY 2008	FY 2009	FY 2010
Instants	\$ 7,468,380	\$ 7,230,750	\$ 7,414,618
Lotto Texas	599,234	494,390	793,631
Pick 3	773,710	748,552	734,942
Pick 3 Sum It Up	8,686	15,976	14,784
Cash 5	212,867	192,687	184,631
Texas Two Step	116,184	125,337	118,139
Mega Millions	373,751	427,154	515,154
Megaplier	95,652	104,792	116,835
Daily 4	108,668	113,268	140,704
Daily 4 Sum It Up	30,681	14,844	13,719
Total	\$ <u>9,787,815</u>	\$ <u>9,467,751</u>	\$ <u>10,047,157</u>
	thru 12/08/2007 99 days	thru 12/06/2008 97 days	thru 12/05/2009 96 days

Texas Lottery Commission
Fiscal Year Over Year Change in Sales
Unaudited
FY 2010 Compared to FY 2009

Week	FY 2010 Week Ending	INSTANT TICKETS				ON-LINE GAMES				TOTAL SALES			
		FY 2010	FY 2009	Difference	% change - Cumulative Sales	FY 2010	FY 2009	Difference	% change - Cumulative Sales	FY 2010	FY 2009	Difference	% change - Cumulative Sales
1	9/5/2009**	\$40,148,241	\$44,890,104	(\$4,741,863)	-10.6%	\$15,859,194	\$14,722,011	\$1,137,184	7.7%	\$56,007,435	\$59,612,115	(\$3,604,680)	-6.0%
2	9/12/2009	\$49,896,100	\$46,309,551	\$3,586,549	7.7%	\$18,206,315	\$13,704,860	\$4,501,455	32.8%	\$68,102,415	\$60,014,411	\$8,088,004	13.5%
3	9/19/2009	\$50,971,937	\$42,923,171	\$8,048,766	18.8%	\$18,859,622	\$12,291,263	\$6,568,359	53.4%	\$69,831,559	\$55,214,434	\$14,617,125	26.5%
4	9/26/2009	\$49,975,243	\$47,042,801	\$2,932,442	6.2%	\$19,345,435	\$14,222,339	\$5,123,096	36.0%	\$69,320,678	\$61,265,140	\$8,055,538	13.1%
5	10/3/2009	\$52,283,569	\$50,747,162	\$1,536,407	3.0%	\$20,991,695	\$15,784,472	\$5,207,223	33.0%	\$73,275,264	\$66,531,634	\$6,743,630	10.1%
6	10/10/2009	\$52,238,261	\$49,763,789	\$2,474,472	5.0%	\$21,547,439	\$15,622,498	\$5,924,941	37.9%	\$73,785,700	\$65,386,287	\$8,399,413	12.8%
7	10/17/2009	\$50,806,599	\$49,299,053	\$1,507,546	3.1%	\$23,114,594	\$15,167,940	\$7,946,654	52.4%	\$73,921,193	\$64,466,993	\$9,454,200	14.7%
8	10/24/2009	\$50,731,592	\$49,977,581	\$754,011	1.5%	\$17,274,411	\$14,525,843	\$2,748,568	18.9%	\$68,006,003	\$64,503,424	\$3,502,579	5.4%
9	10/31/2009	\$50,684,853	\$50,346,542	\$338,311	0.7%	\$15,710,720	\$14,838,845	\$871,876	5.9%	\$66,395,573	\$65,185,387	\$1,210,187	1.9%
10	11/7/2009	\$54,633,928	\$54,860,087	(\$226,159)	-0.4%	\$16,961,611	\$16,057,069	\$904,542	5.6%	\$71,595,539	\$70,917,156	\$678,383	1.0%
11	11/14/2009	\$52,109,218	\$53,484,812	(\$1,375,594)	-2.6%	\$16,407,349	\$15,829,819	\$577,530	3.6%	\$68,516,567	\$69,314,631	(\$798,064)	-1.2%
12	11/21/2009	\$52,427,881	\$52,806,511	(\$378,630)	-0.7%	\$15,829,561	\$16,460,748	(\$631,187)	-3.8%	\$68,257,442	\$69,267,259	(\$1,009,817)	-1.5%
13	11/28/2009	\$50,519,477	\$52,199,741	(\$1,680,264)	-3.2%	\$15,710,447	\$17,397,576	(\$1,687,129)	-9.7%	\$66,229,924	\$69,597,317	(\$3,367,393)	-4.8%
14	12/5/2009	\$54,376,448	\$56,731,851	(\$2,355,403)	-4.2%	\$16,905,341	\$20,363,789	(\$3,458,449)	-17.0%	\$71,281,789	\$77,095,640	(\$5,813,852)	-7.5%
15	12/12/2009		\$54,109,617				\$22,952,228				\$77,061,845		
16	12/19/2009		\$55,777,328				\$15,833,517				\$71,610,845		
17	12/26/2009		\$57,597,885				\$15,851,771				\$73,449,656		
18	1/2/2010		\$57,582,115				\$16,900,028				\$74,482,143		
19	1/9/2010		\$54,250,945				\$16,203,220				\$70,454,165		
20	1/16/2010		\$51,625,339				\$15,701,605				\$67,326,944		
21	1/23/2010		\$52,789,573				\$15,897,473				\$68,687,046		
22	1/30/2010		\$55,453,471				\$16,908,272				\$72,361,743		
23	2/6/2010		\$62,247,711				\$18,354,314				\$80,602,025		
24	2/13/2010		\$60,509,056				\$19,218,078				\$79,727,134		
25	2/20/2010		\$59,194,623				\$21,098,199				\$80,292,822		
26	2/27/2010		\$58,857,216				\$24,116,924				\$82,974,140		
27	3/6/2010		\$59,552,257				\$23,995,136				\$83,547,393		
28	3/13/2010		\$53,754,084				\$18,769,831				\$72,523,915		
29	3/20/2010		\$52,581,107				\$15,903,038				\$68,484,145		
30	3/27/2010		\$52,560,961				\$16,094,933				\$68,655,894		
31	4/3/2010		\$56,249,759				\$17,357,002				\$73,606,761		
32	4/10/2010		\$54,440,987				\$17,660,600				\$72,101,587		
33	4/17/2010		\$52,755,834				\$18,469,585				\$71,225,419		
34	4/24/2010		\$51,450,968				\$20,216,898				\$71,667,866		
35	5/1/2010		\$52,327,090				\$23,520,573				\$75,847,663		
36	5/8/2010		\$53,214,412				\$16,241,207				\$69,455,619		
37	5/15/2010		\$50,785,227				\$15,990,544				\$66,775,771		
38	5/22/2010		\$56,567,077				\$15,874,447				\$72,441,524		
39	5/29/2010		\$55,359,239				\$16,040,196				\$71,399,435		
40	6/5/2010		\$60,250,125				\$16,301,599				\$76,551,724		
41	6/12/2010		\$54,979,517				\$16,143,215				\$71,122,732		
42	6/19/2010		\$53,109,433				\$16,357,924				\$69,467,357		

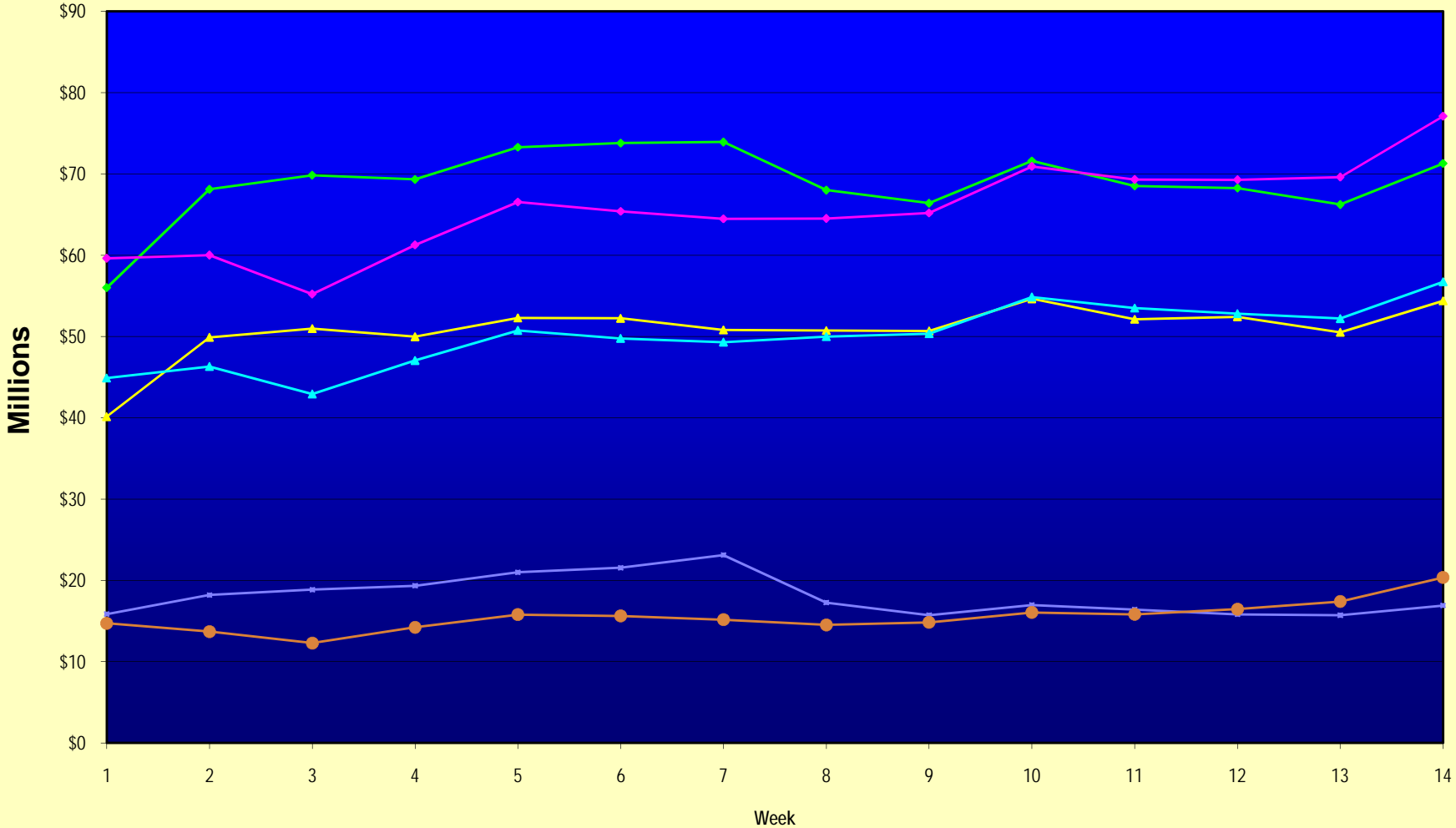
Note: Week 1 is not a full week of sales as this report is prepared on a Fiscal Year basis.

Texas Lottery Commission
Fiscal Year Over Year Change in Sales
Unaudited
FY 2010 Compared to FY 2009

Week	FY 2010 Week Ending	INSTANT TICKETS				ON-LINE GAMES				TOTAL SALES			
		FY 2010	FY 2009	Difference	% change - Cumulative Sales	FY 2010	FY 2009	Difference	% change - Cumulative Sales	FY 2010	FY 2009	Difference	% change - Cumulative Sales
43	6/26/2010		\$53,431,083				\$16,786,203				\$70,217,286		
44	7/3/2010		\$55,518,615				\$18,292,421				\$73,811,036		
45	7/10/2010		\$53,004,390				\$17,842,530				\$70,846,920		
46	7/17/2010		\$52,498,940				\$16,138,341				\$68,637,281		
47	7/24/2010		\$51,550,731				\$16,748,137				\$68,298,868		
48	7/31/2010		\$51,893,977				\$18,065,180				\$69,959,157		
49	8/7/2010		\$54,506,395				\$19,258,117				\$73,764,512		
50	8/14/2010		\$51,766,530				\$20,828,293				\$72,594,823		
51	8/21/2010		\$51,909,040				\$24,913,396				\$76,822,436		
52	8/28/2010		\$50,848,517				\$35,661,563				\$86,510,080		
53			\$13,288,367				\$3,085,816				\$16,374,183		
Total thru Current Week		\$711,803,347	\$701,382,756	\$10,420,591	1.5%	\$252,723,732	\$216,989,070	\$35,734,662	16.5%	\$964,527,079	\$918,371,826	\$46,155,253	5.0%
Fiscal Year Total		\$711,803,347	\$2,791,532,297			\$252,723,732	\$928,581,414			\$964,527,079	\$3,720,113,711		

** FY 2010 includes 5 days; FY 2009 includes 6 days

Texas Lottery Commission Fiscal Year Over Year Change in Sales



Note: Week 1 is not a full week of sales as this report is prepared on a Fiscal Year basis.

Texas Lottery Commission
Instant Tickets by Price Point
Sales, Prize Expense, Sales Contribution and Payout Percentage With Year Over Year Changes
 Unaudited

Fiscal Year	Price Point	# of Active Games	FY Sales	% of Instant Ticket Sales	Year over Year Change in Sales	FY Prize Expense	Year over Year Change in Prize Expense	FY Sales Contribution	Year over Year Change in Contribution	Average Prize Payout %	Year over Year Change in Payout %
2009	\$1.00	32	59,415,605	8.5%		35,797,916		23,617,689		60.3%	0.3%
thru	\$2.00	28	121,605,922	17.3%		78,866,266		42,739,656		64.9%	-0.6%
12/6/2008	\$3.00	13	78,064,347	11.1%		51,319,050		26,745,297		65.7%	0.0%
	\$5.00	29	211,795,889	30.2%		144,053,379		67,742,510		68.0%	0.1%
	\$7.00	6	29,799,483	4.2%		20,269,756		9,529,727		68.0%	0.0%
	\$10.00	13	92,884,340	13.2%		65,007,571		27,876,769		70.0%	0.0%
	\$20.00	7	68,850,680	9.8%		49,416,103		19,434,577		71.8%	0.0%
	\$25.00	1	2,379,850	0.3%		1,730,972		648,878		72.7%	0.2%
	\$30.00	3	6,465,840	0.9%		4,686,498		1,779,342		72.5%	0.1%
	\$50.00	3	30,120,800	4.3%		21,781,640		8,339,160		72.3%	0.2%
Total		135	\$701,382,756			\$472,929,151		\$228,453,605		67.4%	-0.4%
2010	\$1.00	27	59,524,072	8.4%		35,786,484		23,737,588		60.1%	0.0%
thru	\$2.00	29	102,401,744	14.4%		67,989,147		34,412,597		66.4%	1.9%
12/5/2009	\$3.00	14	89,223,630	12.5%		58,651,953		30,571,677		65.7%	0.2%
	\$5.00	31	198,133,563	27.8%		134,561,407		63,572,156		67.9%	-0.2%
	\$7.00	5	29,844,528	4.2%		20,293,453		9,551,075		68.0%	0.0%
	\$10.00	12	104,307,490	14.7%		72,963,242		31,344,248		70.0%	0.0%
	\$20.00	5	108,901,920	15.3%		81,273,261		27,628,659		74.6%	2.0%
	\$25.00	0	-	0.0%		-		-		0.0%	-100.0%
	\$30.00	0	-	0.0%		-		-		0.0%	-100.0%
	\$50.00	2	19,466,400	2.7%		15,079,760		4,386,640		77.5%	3.9%
Total		125	\$711,803,347			\$486,598,707		\$225,204,640		68.4%	0.9%
Variance	\$1.00	-5	108,467		0.2%	-11,432	0.0%	119,899	0.5%	-0.13%	
2010 to	\$2.00	1	-19,204,178		-15.8%	-10,877,119	-13.8%	-8,327,059	-19.5%	1.54%	
2009	\$3.00	1	11,159,283		14.3%	7,332,903	14.3%	3,826,380	14.3%	0.00%	
	\$5.00	2	-13,662,326		-6.5%	-9,491,972	-6.6%	-4,170,354	-6.2%	-0.10%	
	\$7.00	-1	45,045		0.2%	23,697	0.1%	21,348	0.2%	-0.02%	
	\$10.00	-1	11,423,150		12.3%	7,955,671	12.2%	3,467,479	12.4%	-0.04%	
	\$20.00	-2	40,051,240		58.2%	31,857,157	64.5%	8,194,083	42.2%	2.86%	
	\$25.00	-1	-2,379,850		-100.0%	-1,730,972	-100.0%	-648,878	-100.0%	-72.73%	
	\$30.00	-3	-6,465,840		-100.0%	-4,686,498	-100.0%	-1,779,342	-100.0%	-72.48%	
	\$50.00	-1	-10,654,400		-35.4%	-6,701,881	-30.8%	-3,952,520	-47.4%	5.15%	
Total		-10	\$10,420,591		1.5%	\$13,669,556	2.9%	-\$3,248,965	-1.4%	0.93%	

Texas Lottery Commission
Instant Tickets by Price Point
Sales, Prize Expense, Sales Contribution and Payout Percentage With Year Over Year Changes
 Unaudited

Notes - Instant Ticket Variances

		FY 2010		FY 2009		Difference
Sales	\$1 - \$7		\$479,127,537		\$500,681,246	-\$21,553,709
Prize Exp.	\$1 - \$7		\$317,282,444		\$330,306,367	-\$13,023,923
Sales Cont.	\$1 - \$7		\$161,845,093		\$170,374,879	-\$8,529,786
Prize Exp. %	\$1 - \$7		66.2%		66.0%	0.2%
		FY 2010		FY 2009		Difference
Sales	\$10 - \$50		\$232,675,810		\$200,701,510	\$31,974,300
Prize Exp.	\$10 - \$50		\$169,316,263		\$142,622,784	\$26,693,479
Sales Cont.	\$10 - \$50		\$63,359,547		\$58,078,726	\$5,280,821
Prize Exp. %	\$10 - \$50		72.8%		71.1%	1.7%
		FY 2010		FY 2009		Difference
Sales	Instant		\$711,803,347		\$701,382,756	\$10,420,591
Prize Exp.	Instant		\$486,598,707		\$472,929,151	\$13,669,556
Sales Cont.	Instant		\$225,204,640		\$228,453,605	-\$3,248,965
Prize Exp. %	Instant		68.4%		67.4%	0.9%

		FY 2010		FY 2009		Difference
Sales	\$1 - \$10		\$583,435,027		\$593,565,586	-\$10,130,559
Prize Exp.	\$1 - \$10		\$390,245,686		\$395,313,938	-\$5,068,252
Sales Cont.	\$1 - \$10		\$193,189,341		\$198,251,648	-\$5,062,307
Prize Exp. %	\$1 - \$10		66.9%		66.6%	0.3%
		FY 2010		FY 2009		Difference
Sales	\$20 - \$50		\$128,368,320		\$107,817,170	\$20,551,150
Prize Exp.	\$20 - \$50		\$96,353,021		\$77,615,213	\$18,737,807
Sales Cont.	\$20 - \$50		\$32,015,299		\$30,201,957	\$1,813,343
Prize Exp. %	\$20 - \$50		75.1%		72.0%	3.1%
		FY 2010		FY 2009		Difference
Sales	Instant		\$711,803,347		\$701,382,756	\$10,420,591
Prize Exp.	Instant		\$486,598,707		\$472,929,151	\$13,669,556
Sales Cont.	Instant		\$225,204,640		\$228,453,605	-\$3,248,965
Prize Exp. %	Instant		68.4%		67.4%	0.9%

Texas Lottery Commission
Weekly Sales Summary
& Comparison to Previous Week
 Unaudited

	Week Ending 12/05/2009		Week Ending 11/28/2009			
	<u>THIS WEEK</u>	% of Sales	<u>LAST WEEK</u>	% of Sales	<u>\$ change</u>	<u>% change</u>
Total Sales	<u>\$71,281,789</u>		<u>\$66,229,924</u>		<u>\$5,051,865</u>	7.63%
Instant Tickets	<u>\$54,376,448</u>	76.3%	<u>\$50,519,477</u>	76.3%	<u>\$3,856,971</u>	7.63%
Lotto Texas	\$4,004,632	5.6%	\$3,966,034	6.0%	\$38,598	0.97%
Pick 3	\$5,393,458	7.6%	\$5,043,210	7.6%	\$350,248	6.94%
Pick 3 Sum It Up	\$111,442	0.2%	\$102,784	0.2%	\$8,658	8.42%
Cash 5	\$1,288,282	1.8%	\$1,202,798	1.8%	\$85,484	7.11%
Texas Two Step	\$873,210	1.2%	\$693,774	1.0%	\$179,436	25.86%
Mega Millions	\$3,297,486	4.6%	\$2,932,809	4.4%	\$364,677	12.43%
Megaplier	\$773,136	1.1%	\$691,194	1.0%	\$81,942	11.86%
Daily 4	\$1,063,424	1.5%	\$985,337	1.5%	\$78,088	7.92%
Daily 4 Sum It Up	<u>\$100,271</u>	0.1%	<u>\$92,508</u>	0.1%	<u>\$7,763</u>	8.39%
Total Online Sales	<u>\$16,905,341</u>		<u>\$15,710,447</u>		<u>\$1,194,894</u>	7.61%

* Totals may not sum due to rounding.

Texas Lottery Commission
Weekly Sales Summary
Unaudited

INSTANT TICKETS
TOP TEN SELLING GAMES

For the Week Ending : 12/05/2009

Rank	Price Point	Game	Sales (Millions)
1	\$ 20	\$500,000,000 BLOCKBUSTER	\$ 4.260
2	\$ 5	MERRY MONEY	\$ 4.257
3	\$ 10	JINGLE JUMBO BUCKS	\$ 3.115
4	\$ 20	MERRY MILLIONAIRE	\$ 3.086
5	\$ 5	WINTER WINNINGS	\$ 2.438
6	\$ 5	\$50,000 CASH WINFALL	\$ 2.265
7	\$ 7	SPARKLING 7'S	\$ 1.865
8	\$ 3	BONUS WORD CASHWORD	\$ 1.728
9	\$ 3	BONUS CASHWORD	\$ 1.674
10	\$ 2	BREAK THE BANK	\$ 1.549

Texas Lottery Commission
Prize Payout Tracking Report
Unaudited

Through Week Ending 12/05/2009

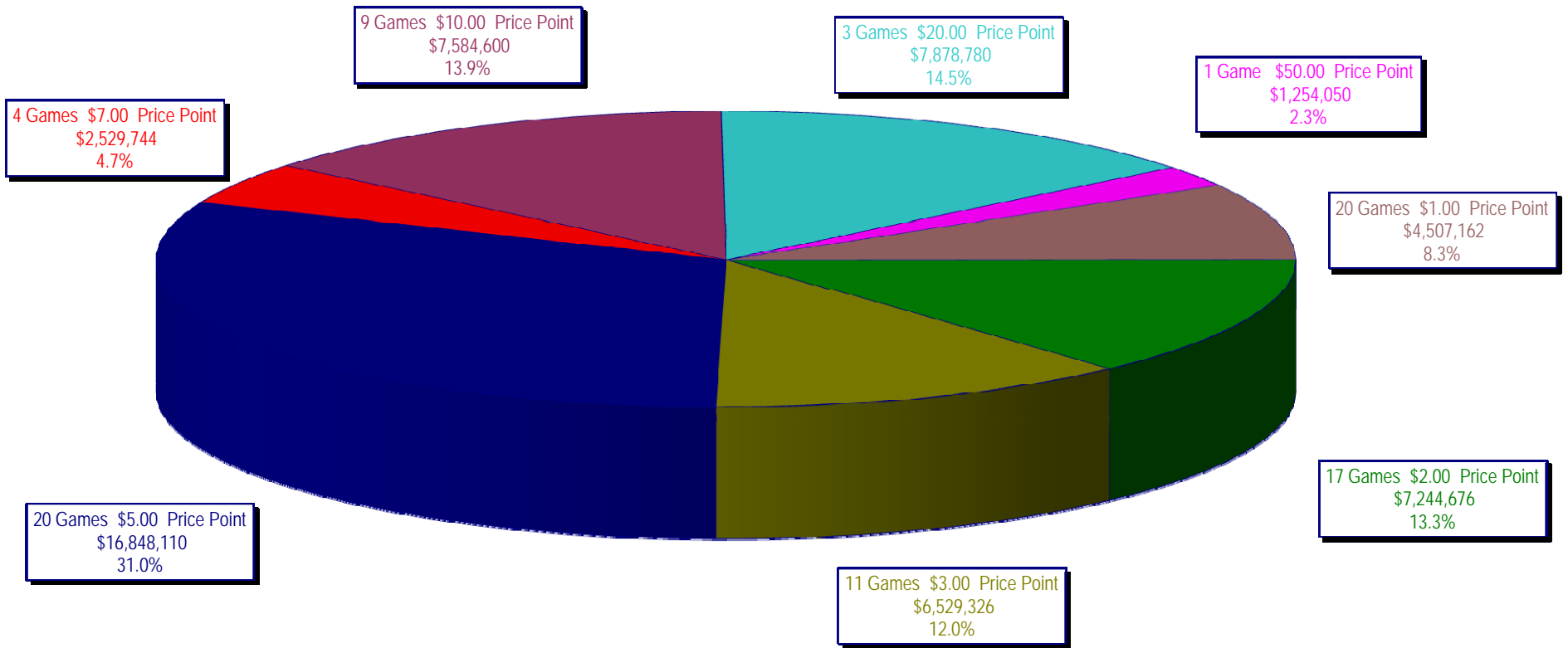
On-Line Sales

		FY Sales Through Week Ending 12/5/2009		FY Prize Expense Through Week Ending 12/5/2009	Actual* Prize Payout	Base Payout (Prize Pool)
Lotto	\$	76,188,530	\$	38,118,633	50.03%	50.00%
Pick 3		70,554,460		32,324,170	45.81%	50.00%
Pick 3 Sum It Up		1,419,237		650,929	45.86%	50.00%
Cash 5		17,724,570		9,826,891	55.44%	50.00%
Texas Two-Step		11,341,354		5,901,905	52.04%	50.00%
Mega Millions		49,454,817		25,014,372	50.58%	50.00%**
Megaplier		11,216,184		3,447,092	30.73%	N/A
Daily 4		13,507,561		6,986,875	51.73%	50.00%
Daily 4-Sum It Up		1,317,019		611,319	46.42%	50.00%
Totals	\$	252,723,732	\$	122,882,186	48.62%	

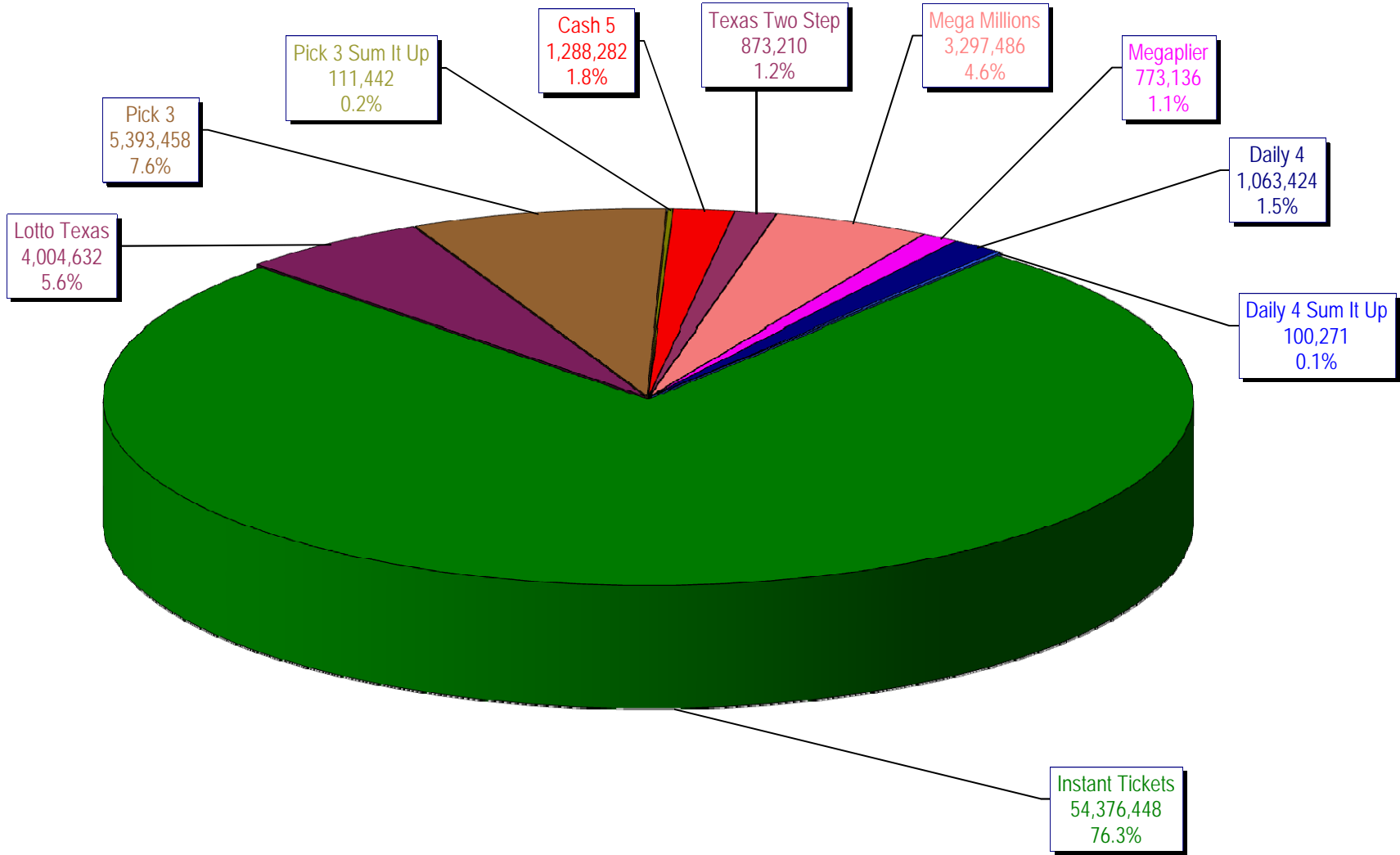
* Before Unclaimed Prizes

** Estimated; depends on # of guaranteed prizes won in Texas

Texas Lottery Commission
Instant Ticket Sales
For the Week Ending 12/05/2009
(Unaudited)



Texas Lottery Commission
All Game Sales
For the Week Ending 12/05/2009
(Unaudited)



Texas Lottery Commission - Weekly Sales Summary for FY 2010 (Unaudited)

Week Ended	Instant Games	New Games & Dates	Lotto Texas	Jackpot W	S	Pick 3	Pick 3 Sum It Up	Cash 5	Texas Two Step	Jackpot M	TH	Mega Millions	Jackpot T	F	Megaplier	Daily 4	Daily 4 Sum It Up	Total	Per Cap.
9/5/2009	53,436,608.00	1183 (\$2,N) - 08/31/09	6,294,287.00	45	47	5,276,229.00	104,886.00	1,338,093.00	1,212,330.00	1.2	200	2,959,401.00	12	12	708,622.00	955,411.00	95,751.00	72,381,618.00	2.98
9/12/2009	49,896,100.00	1200 (\$1,N); 1201 (\$10,N) - 09/07/09	6,426,945.00	49	51	5,109,927.50	104,641.00	1,278,982.00	771,782.00	225	200	2,811,431.00	18	28	693,407.00	918,268.00	90,931.50	68,102,415.00	2.80
9/19/2009	50,971,937.00	1202 (\$3,N); 1185 (\$5,N) - 09/14/09	6,496,645.00	53	55	5,176,010.00	103,700.00	1,295,302.00	803,124.00	200	225	3,164,844.00	38	51	760,088.00	965,671.50	94,237.00	69,831,558.50	2.87
9/26/2009	49,975,243.00	1141 (\$1,N); 1259 (\$3,N) - 09/21/09	6,765,369.00	57	59	4,894,237.50	98,171.00	1,271,129.00	915,249.00	275	400	3,568,088.00	62	75	822,408.00	918,596.00	92,187.50	69,320,678.00	2.85
10/3/2009	52,283,569.00	1203 (\$2,N); 1172 (\$5,N) - 09/28/09	7,003,107.00	61	63	5,156,873.00	102,841.50	1,315,863.00	1,111,913.00	525	650	4,270,019.00	88	105	939,935.00	993,158.50	97,984.50	73,275,263.50	3.01
10/10/2009	52,238,261.00	1205 (\$1,N); 1263 (\$3,N) - 10/05/09	7,061,948.00	64	67	5,050,571.00	102,586.50	1,300,852.00	811,464.00	200	225	5,100,350.00	122	145	1,050,507.00	971,147.50	98,012.50	73,785,699.50	3.03
10/17/2009	50,806,599.00	1187 (\$2,N); 1193 (\$20,N) - 10/12/09	7,262,683.00	70	73	4,990,457.00	99,389.50	1,276,305.00	769,253.00	200	200	6,449,660.00	170	200	1,245,391.00	931,084.00	90,371.00	73,921,192.50	3.04
10/24/2009	50,731,592.00	1188 (\$3,N); 1189 (\$5,N) - 10/19/09	5,785,292.00	76	4	4,845,815.00	93,256.00	1,282,033.00	806,971.00	225	275	2,776,628.00	12	18	663,491.00	931,641.00	89,284.00	68,006,003.00	2.80
10/31/2009	50,684,853.00	1192 (\$10,N); 1186 (\$1,N) - 10/26/09	3,749,006.00	5	6	4,944,409.00	98,542.50	1,289,523.00	815,750.00	375	200	2,988,991.00	28	40	717,574.00	1,006,435.00	100,489.50	66,395,573.00	2.73
11/7/2009	54,633,928.00	1191 (\$7,N) - 11/02/09	3,982,319.00	7	8	5,265,020.50	105,180.50	1,339,215.00	853,140.00	225	275	3,458,403.00	50	63	795,045.00	1,058,564.00	104,724.00	71,595,539.00	2.94
11/14/2009	52,109,218.00	1218 (\$2,N); 1184 (\$5,N) - 11/09/09	3,985,493.00	9	10	5,172,602.50	104,782.00	1,274,573.00	829,607.00	375	200	3,210,618.00	77	12	752,365.00	983,342.50	93,966.00	68,516,567.00	2.82
11/21/2009	52,427,881.00	0	3,943,958.00	11	12	5,123,802.00	104,705.00	1,255,026.00	797,796.00	225	275	2,834,318.00	17	27	687,221.00	990,042.00	92,693.00	68,257,442.00	2.81
11/28/2009	50,519,477.00	1206 (\$1,N); 1190 (\$5,N); 1264 (\$1,N) - 11/23/09	3,966,034.00	13	14	5,043,210.00	102,783.50	1,202,798.00	693,774.00	200	225	2,932,809.00	37	47	691,194.00	985,336.50	92,508.00	66,229,924.00	2.72
12/5/2009	54,376,448.00	1159 (\$2,N); 1182 (\$5,N); 12/07/09	4,004,632.00	15	16	5,393,458.00	111,441.50	1,288,282.00	873,210.00	250	350	3,297,486.00	57	69	773,136.00	1,063,424.00	100,271.00	71,281,788.50	2.93
weekly change	7.63%		0.97%			6.94%	8.42%	7.11%	25.86%			12.43%			11.86%	7.92%	8.39%	7.63%	
	SALES		SALES			SALES	SALES	SALES	SALES			SALES			SALES	SALES	SALES	SALES	% of Sales
Startup to date	36,983,921,646.00		10,555,802,077.00			3,654,152,217.50	13,820,312.00	2,207,628,710.00	489,129,285.00			1,190,985,416.45			276,784,471.00	102,557,772.00	15,070,846.00	55,697,986,724.95	100.0%
Calendar Year to date	2,602,017,971.00		216,432,785.00			262,992,718.50	175,670.50	64,890,256.00	47,970,148.00			207,028,512.95			44,916,656.00	46,350,113.50	4,930,038.50	3,497,704,869.95	100.0%
Fiscal Year to date 2010	711,803,347.00		76,188,530.00			70,554,460.00	1,419,236.50	17,724,570.00	11,341,354.00			49,454,817.00			11,216,184.00	13,507,561.00	1,317,019.00	964,527,078.50	100.0%