



WEEKLY SALES SUMMARY

Unaudited

[Week Ending: 12/10/2016](#)

Texas Lottery Commission
Fiscal Year to Date Sales Comparison
Unaudited

Through the Week Ending 12/10/2016 (15 Weeks)

Sales by Game	FY 2015 *	FY 2016 **	FY 2017	\$ Change		% Change	
				FY 2017 to FY 2015	FY 2017 to FY 2016	FY 2017 to FY 2015	FY 2017 to FY 2016
Scratch Tickets	\$ 932,824,349	\$ 963,845,070	\$ 1,010,015,465	\$ 77,191,116	\$ 46,170,395	8.3%	4.8%
Lotto Texas	34,279,301	35,787,417	30,508,471	-3,770,830	-5,278,946	-11.0%	-14.8%
Lotto Extra	5,172,178	6,042,082	5,837,884	665,706	-204,198	12.9%	-3.4%
Pick 3	71,206,330	71,221,668	67,695,674	-3,510,656	-3,525,994	-4.9%	-5.0%
Pick 3 Sum It Up	1,361,770	1,421,995	1,290,187	-71,584	-131,808	-5.3%	-9.3%
Cash Five	14,194,888	13,170,696	12,124,057	-2,070,831	-1,046,639	-14.6%	-7.9%
Texas Two Step	16,244,941	14,843,231	14,440,441	-1,804,500	-402,790	-11.1%	-2.7%
Mega Millions	45,130,890	35,640,581	28,362,645	-16,768,245	-7,277,936	-37.2%	-20.4%
Megaplier	10,248,726	8,914,829	7,830,269	-2,418,457	-1,084,560	-23.6%	-12.2%
Daily 4	23,966,705	24,456,072	25,127,003	1,160,298	670,931	4.8%	2.7%
Daily 4 Sum It Up	1,439,192	1,261,288	1,308,905	-130,287	47,617	-9.1%	3.8%
Powerball	48,748,645	56,559,244	64,505,397	15,756,752	7,946,153	32.3%	14.0%
Power Play	6,389,196	7,414,127	8,994,766	2,605,570	1,580,639	40.8%	21.3%
All or Nothing	11,250,312	8,919,400	8,049,682	-3,200,630	-869,718	-28.4%	-9.8%
Monopoly	2,656,700	-	-	-2,656,700	-	-100.0%	-
Texas Triple Chance	-	7,713,511	4,438,194	4,438,194	-3,275,317	-	-42.5%
Total	\$ 1,225,114,123	\$ 1,257,211,210	\$ 1,290,529,040	\$ 65,414,917	\$ 33,317,830	5.3%	2.7%

* 3 extra days

** 2 extra days

Texas Lottery Commission
Fiscal Year to Date Cumulative Average Sales Comparison
Unaudited

Through the Week Ending 12/10/2016 (15 Weeks)

Sales by Game	FY 2015	FY 2016	FY 2017
Scratch Tickets	\$ 8,969,465	\$ 9,357,719	\$ 10,000,153
Lotto Texas	329,609	347,451	302,064
Lotto Extra	49,732	58,661	57,801
Pick 3	684,676	691,473	670,254
Pick 3 Sum It Up	13,094	13,806	12,774
Cash Five	136,489	127,871	120,040
Texas Two Step	156,201	144,109	142,975
Mega Millions	433,951	346,025	280,818
Megaplier	98,545	86,552	77,527
Daily 4	230,449	237,438	248,782
Daily 4 Sum It Up	13,838	12,246	12,959
Powerball	468,737	549,119	638,667
Power Play	61,435	71,982	89,057
All or Nothing	108,176	86,596	79,700
Monopoly	** 48,304	-	-
Texas Triple Chance	- *	100,175	43,943
Total	\$ 11,802,702	\$ 12,231,221	\$ 12,777,515

thru 12/13/2014

104 days

**

55 days

*

thru 12/12/2015

103 days

77 days

thru 12/10/2016

101 days

Texas Lottery Commission
Fiscal Year Over Year Change in Sales
Unaudited
FY 2017 Compared to FY 2016

			SCRATCH TICKETS				DRAW GAMES				TOTAL SALES			
FY 2017			FY 2017	FY 2016	Difference	% change - Cumulative Sales	FY 2017	FY 2016	Difference	% change - Cumulative Sales	FY 2017	FY 2016	Difference	% change - Cumulative Sales
Week	Week Ending													
1	9/3/2016 *		\$32,980,266	\$49,534,249	(\$16,553,983)	-33.4%	\$10,218,656	\$17,091,724	(\$6,873,068)	-40.2%	\$43,198,922	\$66,625,973	(\$23,427,051)	-35.2%
2	9/10/2016		\$65,952,418	\$61,566,291	\$4,386,127	7.1%	\$19,635,377	\$20,630,922	(\$995,545)	-4.8%	\$85,587,795	\$82,197,213	\$3,390,583	4.1%
3	9/17/2016		\$66,196,270	\$63,530,657	\$2,665,613	4.2%	\$20,915,290	\$20,327,253	\$588,037	2.9%	\$87,111,560	\$83,857,910	\$3,253,650	3.9%
4	9/24/2016		\$64,383,005	\$61,731,400	\$2,651,605	4.3%	\$17,451,165	\$22,252,290	(\$4,801,125)	-21.6%	\$81,834,170	\$83,983,690	(\$2,149,520)	-2.6%
5	10/1/2016		\$67,349,951	\$67,048,415	\$301,536	0.4%	\$17,519,852	\$25,436,791	(\$7,916,939)	-31.1%	\$84,869,803	\$92,485,206	(\$7,615,403)	-8.2%
6	10/8/2016		\$71,598,690	\$66,049,706	\$5,548,984	8.4%	\$18,211,107	\$18,138,977	\$72,130	0.4%	\$89,809,797	\$84,188,683	\$5,621,114	6.7%
7	10/15/2016		\$69,444,762	\$65,073,593	\$4,371,169	6.7%	\$18,075,261	\$17,776,414	\$298,847	1.7%	\$87,520,023	\$82,850,007	\$4,670,016	5.6%
8	10/22/2016		\$69,317,066	\$64,087,437	\$5,229,629	8.2%	\$18,422,336	\$18,450,464	(\$28,128)	-0.2%	\$87,739,402	\$82,537,901	\$5,201,501	6.3%
9	10/29/2016		\$69,729,599	\$66,025,374	\$3,704,225	5.6%	\$18,535,248	\$19,568,150	(\$1,032,902)	-5.3%	\$88,264,847	\$85,593,524	\$2,671,324	3.1%
10	11/5/2016		\$73,451,702	\$68,137,192	\$5,314,510	7.8%	\$20,151,939	\$20,398,351	(\$246,413)	-1.2%	\$93,603,641	\$88,535,543	\$5,068,098	5.7%
11	11/12/2016		\$70,998,320	\$65,449,428	\$5,548,892	8.5%	\$19,925,460	\$20,169,382	(\$243,923)	-1.2%	\$90,923,780	\$85,618,810	\$5,304,970	6.2%
12	11/19/2016		\$75,265,196	\$68,364,421	\$6,900,775	10.1%	\$21,424,637	\$17,174,606	\$4,250,031	24.7%	\$96,689,833	\$85,539,027	\$11,150,806	13.0%
13	11/26/2016		\$68,983,157	\$61,091,628	\$7,891,529	12.9%	\$24,223,331	\$17,168,993	\$7,054,338	41.1%	\$93,206,488	\$78,260,621	\$14,945,867	19.1%
14	12/3/2016		\$72,688,514	\$67,830,827	\$4,857,687	7.2%	\$17,653,328	\$19,252,418	(\$1,599,090)	-8.3%	\$90,341,842	\$87,083,245	\$3,258,597	3.7%
15	12/10/2016		\$71,676,549	\$68,324,452	\$3,352,097	4.9%	\$18,150,590	\$19,529,408	(\$1,378,819)	-7.1%	\$89,827,139	\$87,853,860	\$1,973,279	2.2%
16	12/17/2016			\$71,041,258				\$20,824,840				\$91,866,098		
17	12/24/2016			\$78,125,965				\$22,586,417				\$100,712,382		
18	12/31/2016			\$76,712,975				\$27,972,880				\$104,685,855		
19	1/7/2017			\$77,136,541				\$127,289,478				\$204,426,019		
20	1/14/2017			\$73,858,865				\$140,104,126				\$213,962,991		
21	1/21/2017			\$70,665,700				\$20,781,745				\$91,447,445		
22	1/28/2017			\$71,051,685				\$20,433,401				\$91,485,086		
23	2/4/2017			\$78,458,428				\$21,274,800				\$99,733,228		
24	2/11/2017			\$80,754,850				\$21,391,919				\$102,146,769		
25	2/18/2017			\$80,078,271				\$21,911,382				\$101,989,653		
26	2/25/2017			\$78,832,217				\$22,823,086				\$101,655,303		
27	3/4/2017			\$80,019,524				\$23,146,906				\$103,166,430		
28	3/11/2017			\$78,524,214				\$19,311,625				\$97,835,839		
29	3/18/2017			\$75,446,960				\$18,001,000				\$93,447,960		
30	3/25/2017			\$75,293,759				\$18,553,964				\$93,847,723		
31	4/1/2017			\$79,316,221				\$19,482,563				\$98,798,784		
32	4/8/2017			\$74,560,898				\$20,100,629				\$94,661,527		
33	4/15/2017			\$74,056,586				\$20,677,413				\$94,733,999		
34	4/22/2017			\$73,110,080				\$20,313,339				\$93,423,419		
35	4/29/2017			\$73,448,019				\$22,666,626				\$96,114,645		
36	5/6/2017			\$77,593,399				\$33,262,968				\$110,856,367		
37	5/13/2017			\$75,263,676				\$20,250,149				\$95,513,825		
38	5/20/2017			\$74,274,808				\$19,605,983				\$93,880,791		
39	5/27/2017			\$71,562,728				\$20,150,232				\$91,712,960		
40	6/3/2017			\$73,085,109				\$21,067,550				\$94,152,659		
41	6/10/2017			\$70,593,768				\$21,389,794				\$91,983,562		
42	6/17/2017			\$69,501,864				\$22,402,713				\$91,904,577		

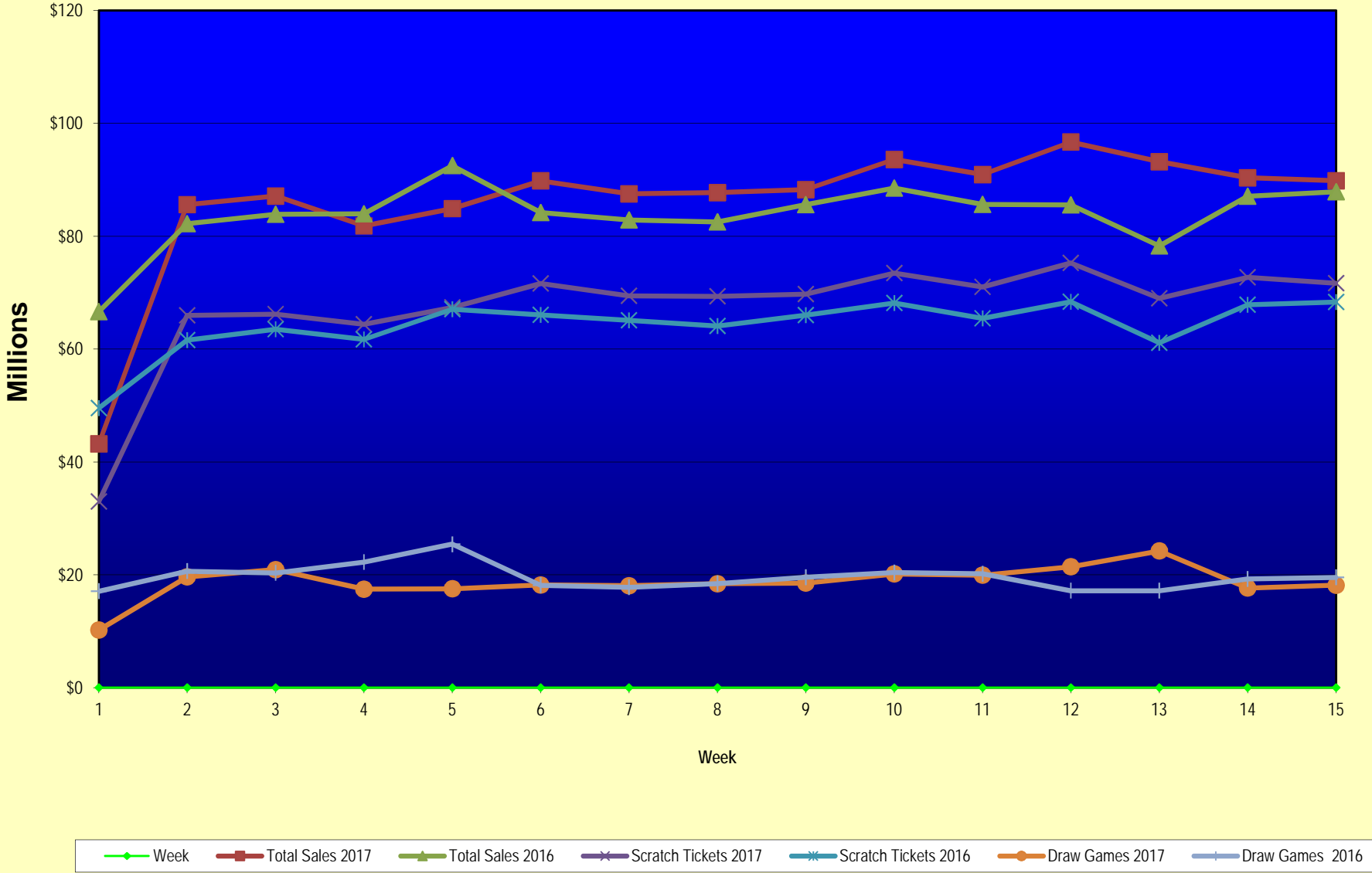
Texas Lottery Commission
Fiscal Year Over Year Change in Sales
Unaudited
FY 2017 Compared to FY 2016

			SCRATCH TICKETS				DRAW GAMES				TOTAL SALES			
FY 2017			FY 2017	FY 2016	Difference	% change - Cumulative Sales	FY 2017	FY 2016	Difference	% change - Cumulative Sales	FY 2017	FY 2016	Difference	% change - Cumulative Sales
Week	Week	Ending												
43	6/24/2017			\$69,243,660				\$24,290,311				\$93,533,971		
44	7/1/2017			\$70,782,313				\$29,331,406				\$100,113,719		
45	7/8/2017			\$67,636,625				\$38,673,314				\$106,309,939		
46	7/15/2017			\$68,064,720				\$21,311,938				\$89,376,658		
47	7/22/2017			\$69,509,821				\$21,982,689				\$91,492,510		
48	7/29/2017			\$64,486,970				\$30,699,953				\$95,186,923		
49	8/5/2017			\$69,206,183				\$18,277,075				\$87,483,258		
50	8/12/2017			\$67,165,060				\$18,101,640				\$85,266,700		
51	8/19/2017			\$69,067,938				\$18,981,681				\$88,049,619		
52	8/26/2017			\$67,821,162				\$19,606,571				\$87,427,733		
	8/31/2017 **			\$36,609,542				\$9,310,254				\$45,919,796		
Total thru Current Week			\$1,010,015,465	\$963,845,070	\$46,170,395	4.8%	\$280,513,575	\$293,366,140	(\$12,852,566)	-4.4%	\$1,290,529,040	\$1,257,211,210	\$33,317,830	2.7%
Fiscal Year Total			\$1,010,015,465	\$3,715,807,432			\$280,513,575	\$1,351,710,491			\$1,290,529,040	\$5,067,517,923		

* FY 17 includes 3 days; FY 16 includes 5 days

** FY 17 includes 5 days; FY 16 includes 4 days

Texas Lottery Commission Fiscal Year Over Year Change in Sales



Note: Week 1 is not a full week of sales as this report is prepared on a Fiscal Year basis.

Texas Lottery Commission
Scratch Tickets by Price Point
Sales, Prize Expense, Sales Contribution and Payout Percentage With Year Over Year Changes
Unaudited

Fiscal Year	Price Point	# of Active Games	FY Sales	% of Scratch Ticket Sales	Year over Year Change in Sales	FY Prize Expense	Year over Year Change in Prize Expense	FY Sales Contribution	Year over Year Change in Contribution	Average Prize Payout %	Year over Year Change in Payout %
2016	\$1.00	14	42,636,060	4.4%		25,791,359		16,844,701		60.5%	0.0%
Through	\$2.00	26	96,533,098	10.0%		62,792,020		33,741,078		65.0%	-0.7%
12/12/2015	\$3.00	9	82,557,597	8.6%		54,325,864		28,231,733		65.8%	-0.2%
	\$5.00	41	308,236,955	32.0%		209,414,322		98,822,633		67.9%	0.0%
	\$10.00	14	192,512,970	20.0%		134,881,718		57,631,252		70.1%	-0.3%
	\$20.00	9	193,801,140	20.1%		145,238,776		48,562,364		74.9%	0.0%
	\$50.00	3	47,567,250	4.9%		36,994,827		10,572,423		77.8%	0.0%
Total		116	\$963,845,070			\$669,438,886		\$294,406,184		69.5%	0.0%
2017	\$1.00	17	40,523,371	4.0%		24,521,571		16,001,800		60.5%	0.5%
Through	\$2.00	22	84,937,212	8.4%		55,353,455		29,583,757		65.2%	0.0%
12/10/2016	\$3.00	8	69,950,322	6.9%		46,111,250		23,839,072		65.9%	0.0%
	\$5.00	40	319,252,610	31.6%		216,910,232		102,342,378		67.9%	0.0%
	\$10.00	16	208,889,730	20.7%		147,464,306		61,425,424		70.6%	0.6%
	\$20.00	11	235,486,820	23.3%		176,452,331		59,034,489		74.9%	0.0%
	\$50.00	4	50,975,400	5.0%		39,666,062		11,309,338		77.8%	0.0%
Total		118	\$1,010,015,465			\$706,479,208		\$303,536,257		69.9%	0.6%
Variance	\$1.00	3	-2,112,689		-5.0%	-1,269,788	-4.9%	-842,901	-5.0%	0.02%	
2017 to	\$2.00	-4	-11,595,886		-12.0%	-7,438,565	-11.8%	-4,157,321	-12.3%	0.12%	
2016	\$3.00	-1	-12,607,275		-15.3%	-8,214,614	-15.1%	-4,392,661	-15.6%	0.12%	
	\$5.00	-1	11,015,655		3.6%	7,495,910	3.6%	3,519,745	3.6%	0.00%	
	\$10.00	2	16,376,760		8.5%	12,582,588	9.3%	3,794,172	6.6%	0.53%	
	\$20.00	2	41,685,680		21.5%	31,213,556	21.5%	10,472,124	21.6%	-0.01%	
	\$50.00	1	3,408,150		7.2%	2,671,235	7.2%	736,915	7.0%	0.04%	
Total		2	\$46,170,395		4.8%	\$37,040,321	5.5%	\$9,130,074	3.1%	0.49%	

Notes - Scratch Ticket Variances

Texas Lottery Commission
Scratch Tickets by Price Point
Sales, Prize Expense, Sales Contribution and Payout Percentage With Year Over Year Changes
Unaudited

		FY 2017		FY 2016		Difference
Sales	\$1 - \$5	\$514,663,515		\$529,963,710		-\$15,300,195
Prize Exp.	\$1 - \$5	\$342,896,507		\$352,323,565		-\$9,427,057
Sales Cont.	\$1 - \$5	\$171,767,008		\$177,640,145		-\$5,873,138
Prize Exp. %	\$1 - \$5	66.6%		66.5%		0.1%
		FY 2017		FY 2016		Difference
Sales	\$10 - \$50	\$495,351,950		\$433,881,360		\$61,470,590
Prize Exp.	\$10 - \$50	\$363,582,700		\$317,115,322		\$46,467,379
Sales Cont.	\$10 - \$50	\$131,769,250		\$116,766,038		\$15,003,211
Prize Exp. %	\$10 - \$50	73.4%		73.1%		0.3%
		FY 2017		FY 2016		Difference
Sales	Scratch	\$1,010,015,465		\$963,845,070		\$46,170,395
Prize Exp.	Scratch	\$706,479,208		\$669,438,886		\$37,040,321
Sales Cont.	Scratch	\$303,536,257		\$294,406,184		\$9,130,074
Prize Exp. %	Scratch	69.9%		69.5%		0.5%

		FY 2017		FY 2016		Difference
Sales	\$1 - \$10	\$723,553,245		\$722,476,680		\$1,076,565
Prize Exp.	\$1 - \$10	\$490,360,814		\$487,205,283		\$3,155,531
Sales Cont.	\$1 - \$10	\$233,192,431		\$235,271,397		-\$2,078,966
Prize Exp. %	\$1 - \$10	67.8%		67.4%		0.3%
		FY 2017		FY 2016		Difference
Sales	\$20 - \$50	\$286,462,220		\$241,368,390		\$45,093,830
Prize Exp.	\$20 - \$50	\$216,118,394		\$182,233,603		\$33,884,791
Sales Cont.	\$20 - \$50	\$70,343,826		\$59,134,787		\$11,209,039
Prize Exp. %	\$20 - \$50	75.4%		75.5%		-0.1%
		FY 2017		FY 2016		Difference
Sales	Scratch	\$1,010,015,465		\$963,845,070		\$46,170,395
Prize Exp.	Scratch	\$706,479,208		\$669,438,886		\$37,040,321
Sales Cont.	Scratch	\$303,536,257		\$294,406,184		\$9,130,074
Prize Exp. %	Scratch	69.9%		69.5%		0.5%

Texas Lottery Commission
Weekly Sales Summary
& Comparison to Previous Week
 Unaudited

	Week Ending 12/10/2016	% of Sales	Week Ending 12/03/2016	% of Sales	\$ change	% change
	<u>THIS WEEK</u>		<u>LAST WEEK</u>			
Total Sales	<u>\$89,827,139</u>		<u>\$90,341,842</u>		<u>-\$514,704</u>	-0.57%
Scratch Tickets	<u>\$71,676,549</u>	79.8%	<u>\$72,688,514</u>	80.5%	<u>-\$1,011,965</u>	-1.39%
Lotto	\$2,006,953	2.2%	\$1,989,472	2.2%	\$17,481	0.88%
Lotto Extra	\$388,230	0.4%	\$386,573	0.4%	\$1,657	0.43%
Pick 3	\$4,748,391	5.3%	\$4,901,443	5.4%	-\$153,052	-3.12%
Pick 3 Sum It Up	\$88,668	0.1%	\$91,365	0.1%	-\$2,697	-2.95%
Cash Five	\$849,940	0.9%	\$857,900	0.9%	-\$7,960	-0.93%
Texas Two Step	\$1,337,879	1.5%	\$1,002,319	1.1%	\$335,560	33.48%
Mega Millions	\$1,830,451	2.0%	\$1,761,923	2.0%	\$68,528	3.89%
Megaplier	\$505,981	0.6%	\$499,193	0.6%	\$6,788	1.36%
Daily 4	\$1,812,622	2.0%	\$1,823,528	2.0%	-\$10,906	-0.60%
Daily 4 Sum It Up	\$88,690	0.1%	\$94,278	0.1%	-\$5,588	-5.93%
Powerball	\$3,176,570	3.5%	\$2,932,322	3.2%	\$244,248	8.33%
Power Play	\$475,269	0.5%	\$444,551	0.5%	\$30,718	6.91%
All or Nothing	\$551,930	0.6%	\$569,036	0.6%	-\$17,106	-3.01%
Texas Triple Chance	\$289,016	0.3%	\$299,426	0.3%	-\$10,410	-3.48%
Total Draw Game Sales	<u>\$18,150,590</u>		<u>\$17,653,328</u>		<u>\$497,262</u>	2.82%

* Totals may not sum due to rounding.

Texas Lottery Commission
Weekly Sales Summary
Unaudited

SCRATCH TICKETS
TOP TEN SELLING GAMES

For the week ending: 12/10/2016

Rank	Price Point	Game	Sales (Millions)
1	\$ 10	\$1 MILLION HIGH ROLLER	\$ 4.033
2	\$ 10	HOLIDAY COUNTDOWN SUPER TICKET	\$ 4.010
3	\$ 20	100X THE CASH	\$ 3.216
4	\$ 50	\$7,500,000 ULTIMATE CASH	\$ 3.059
5	\$ 20	SUPER BREAK THE BANK	\$ 2.910
6	\$ 5	SUPER LOTERIA	\$ 2.753
7	\$ 5	GARLAND RICHES	\$ 2.521
8	\$ 10	\$200 MILLION PAYOUT	\$ 2.426
9	\$ 5	WILD CASH BONANZA	\$ 2.360
10	\$ 3	BONUS CASHWORD	\$ 2.187

Texas Lottery Commission
Prize Payout Tracking Report
Unaudited

Through the week ending: 12/10/2016

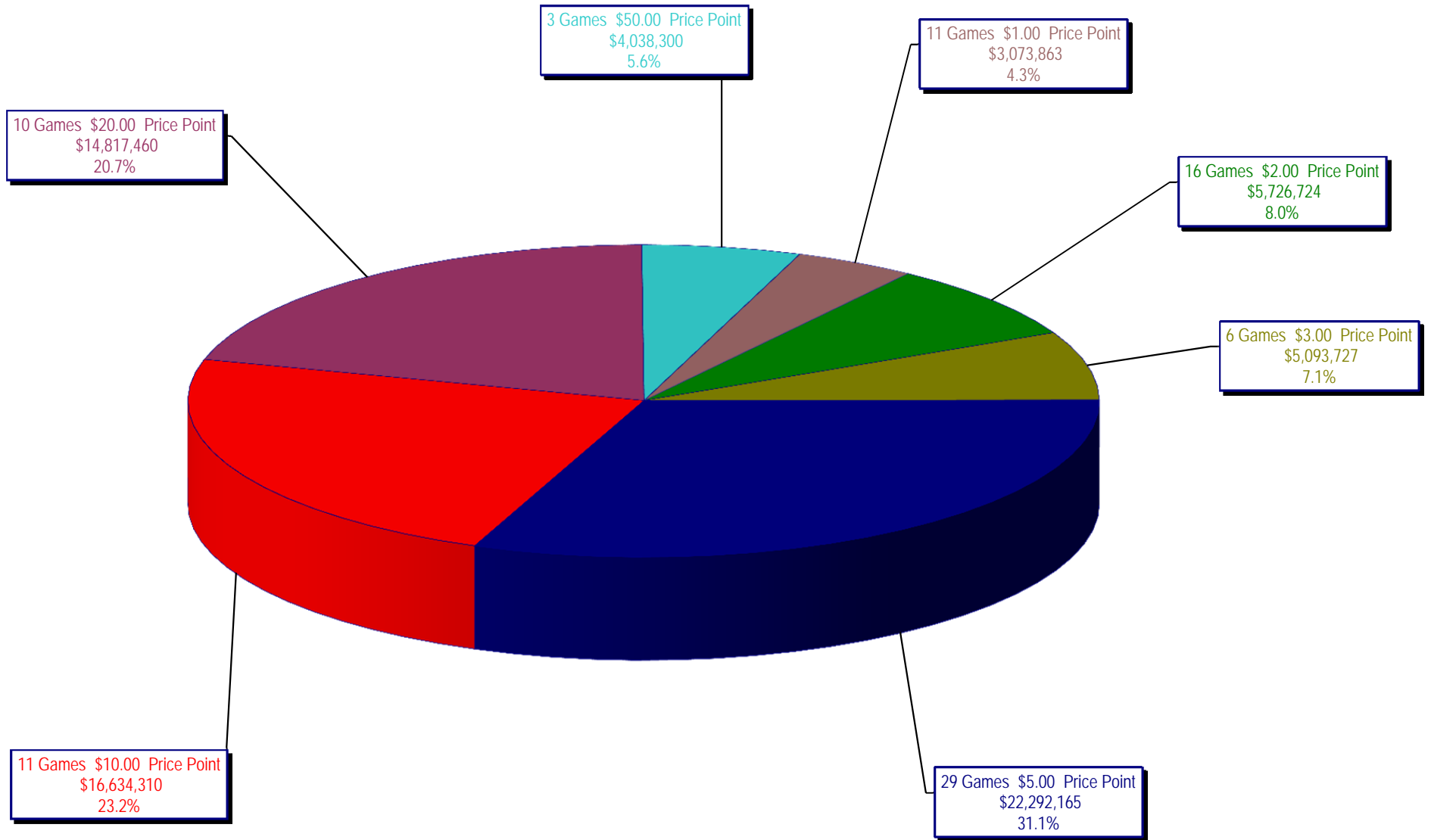
Draw Game Sales

		FY Sales Through Week Ending 12/10/2016		FY Prize Expense Through Week Ending 12/10/2016	Actual* Prize Payout	Base Payout (Prize Pool)
Lotto	\$	30,508,471	\$	15,259,786	50.02%	50.00%
Lotto Extra		5,837,884		3,174,878	54.38%	53.70%
Pick 3		67,695,674		33,830,230	49.97%	50.00%
Pick 3 Sum It Up		1,290,187		602,337	46.69%	50.00%
Cash Five		12,124,057		6,062,081	50.00%	50.00%
Texas Two Step		14,440,441		7,541,599	52.23%	50.00%
Mega Millions		28,362,645		14,504,195	51.14%	50.00%**
Megaplier		7,830,269		3,925,100	50.13%	N/A
Daily 4		25,127,003		11,133,725	44.31%	50.00%
Daily 4 Sum It Up		1,308,905		567,331	43.34%	50.00%
Powerball		64,505,397		32,270,202	50.03%	50.00%**
Power Play		8,994,766		4,501,298	50.04%	N/A
All or Nothing		8,049,682		4,312,428	53.57%	55.98%
Texas Triple Chance		4,438,194		2,324,125	52.37%	54.42%
Totals	\$	280,513,575	\$	140,009,314	49.91%	

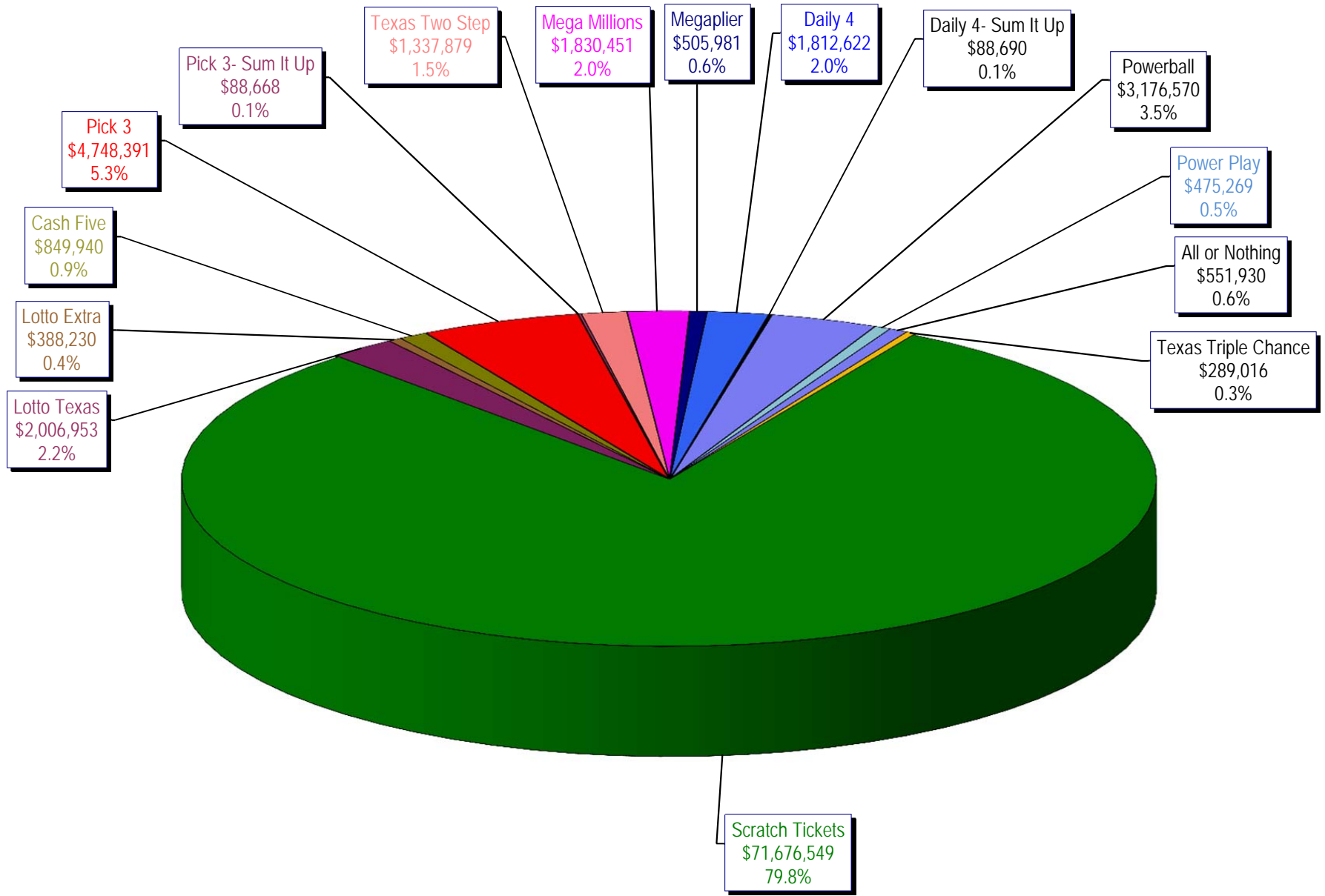
* Before Unclaimed Prizes

**Estimated; depends on # of guaranteed prizes won in Texas

Texas Lottery Commission
Scratch Ticket Sales
For the week ending 12/10/2016
(Unaudited)



Texas Lottery Commission
All Game Sales
For the week ending 12/10/2016
(Unaudited)



Texas Lottery Commission - Weekly Sales Summary for FY 2017 (Unaudited)

Week Ended	Scratch Tickets	New Games & Dates	Lotto Texas	Jackpot W S	Lotto Extra	Pick 3	Pick 3 Sum It Up	Cash Five	Texas Two Step	Jackpot M TH	Mega Millions	Jackpot T F	Megaplier	Daily 4	Daily 4 Sum It Up	Powerball	Jackpot W S	Power Play	All or Nothing	Texas Triple Chance	Total	Per Cap.
9/3/2016*	69,589,808	0	2,106,552	8.75 9.25	402,665	4,798,985	92,214	843,135	810,947	200 200	2,331,141	84 92	631,299	1,788,614	96,398	4,189,234	154 170	603,430	528,102	306,194	89,118,717	3.24
9/10/2016	65,952,418	1810 (\$1.N); 1809 (\$1.N); 1811 (\$5.N) - 9/06/16	2,095,828	9.75 10.25	399,944	4,590,651	86,697	818,614	862,148	225 275	2,490,552	101 111	655,066	1,647,119	87,455	4,473,836	186 205	628,810	506,718	291,940	85,587,795	3.12
9/17/2016	66,196,270	0	2,127,440	11 11.75	405,936	4,553,039	86,110	822,240	1,180,444	400 550	2,661,252	122 133	692,583	1,705,629	91,610	5,096,928	222 244	696,626	503,466	291,988	87,111,560	3.17
9/24/2016	64,383,005	1793 (\$2.N); 1782 (\$5.N); 1781 (\$10.N) - 9/19/16	2,141,721	12.25 13	404,127	4,551,066	83,958	811,604	1,465,789	700 900	1,733,288	15 20	489,347	1,680,793	90,386	2,790,676	40 50	429,512	503,041	275,858	81,834,170	2.98
10/1/2016	67,349,951	0	2,203,652	13.25 14	414,603	4,642,047	91,016	857,979	816,836	200 225	1,840,801	25 30	515,384	1,688,464	88,184	2,960,772	60 70	455,619	589,964	354,532	84,869,803	3.09
10/8/2016	71,598,690	1772 (\$1.N); 1770 (\$2.N); 1813 (\$5.N); 1779 (\$20.N) - 10/03/16	2,211,941	14.5 15.5	419,062	4,900,537	94,965	867,520	849,234	200 225	1,925,289	35 41	540,723	1,780,544	92,908	3,109,092	80 91	471,027	611,898	336,368	89,809,797	3.27
10/15/2016	69,444,762	0	2,207,002	16 16.75	416,802	4,549,017	89,171	836,548	1,024,493	300 425	1,780,458	49 15	496,567	1,679,519	87,007	3,499,528	107 122	510,617	577,343	321,190	87,520,023	3.19
10/22/2016	69,317,066	1814 (\$3.N); 1815 (\$5.N); 1832 (\$50.N) - 10/17/16	2,222,089	17 18	420,632	4,457,898	84,115	836,942	1,260,293	575 750	1,714,985	20 25	482,408	1,636,471	83,009	3,800,444	136 151	542,655	564,808	315,588	87,739,402	3.19
10/29/2016	69,729,599	0	2,269,908	18.5 19.25	430,487	4,511,234	86,114	833,125	779,029	200 200	1,781,093	30 35	500,203	1,711,520	88,083	4,097,116	164 180	575,614	565,102	306,622	88,264,847	3.21
11/5/2016	73,451,702	0	2,168,782	20 5	414,167	4,996,360	97,149	859,798	796,978	200 200	1,904,765	40 47	534,014	1,913,301	100,223	4,796,408	198 217	660,205	591,246	318,544	93,603,641	3.41
11/12/2016	70,998,320	1816 (\$2.N); 1808 (\$5.N); 1817 (\$5.N); 1818 (\$10.N) - 11/07/16	1,893,513	5.25 5.5	368,470	4,642,196	89,581	833,195	869,408	225 275	1,964,313	54 65	541,639	1,741,306	90,176	5,313,351	236 258	715,597	563,280	299,436	90,923,780	3.31
11/19/2016	75,265,196	1819 (\$1.N); 1820 (\$5.N); 1869 (\$10.N) - 11/16/16	1,924,291	5.75 6	376,977	4,595,331	87,939	830,211	1,078,765	400 550	2,072,033	73 82	567,597	1,715,227	91,335	6,391,094	293 320	836,372	557,058	300,408	96,689,833	3.52
11/26/2016	68,983,157	0	1,945,264	6.25 6.5	383,703	4,472,018	83,761	795,696	737,931	200 225	1,698,370	15 20	487,160	1,649,794	84,195	9,839,524	359 403	1,235,062	527,328	283,526	93,206,488	3.39
12/3/2016	72,688,514	0	1,989,472	6.75 7	386,573	4,901,443	91,365	857,900	1,002,319	275 375	1,761,923	25 30	499,193	1,823,528	94,278	2,932,322	40 54	444,551	569,036	299,426	90,341,842	3.29
12/10/2016	71,676,549	1807 (\$5.N); 1866 (\$10.N); 1822 (\$20.N) - 12/05/16	2,006,953	7.25 7.5	388,230	4,748,391	88,668	849,940	1,337,879	525 700	1,830,451	35 43	505,981	1,812,622	88,690	3,176,570	67 85	475,269	551,930	289,016	89,827,139	3.27
weekly change	-1.4%		0.9%		0.4%	-3.1%	-3.0%	-0.9%	33.5%		3.9%		1.4%	-0.6%	-5.9%	8.3%		6.9%	-3.0%	-3.5%	-0.6%	
	SALES		SALES		SALES	SALES	SALES	SALES	SALES		SALES	SALES	SALES	SALES	SALES	SALES		SALES	SALES	SALES	SALES	% of Sales
Calendar Year to date	3,558,263,109		108,784,301		20,284,094	238,318,422	4,813,367	42,601,035	51,405,956		142,135,875		36,530,765	86,241,117	4,640,589	444,017,536		52,267,358	27,979,938	18,422,447	4,836,705,909	100.0%
Fiscal Year to date 2017	1,010,015,465		30,508,471		5,837,884	67,695,674	1,290,187	12,124,057	14,440,441		28,362,645		7,830,269	25,127,003	1,308,905	64,505,397		8,994,766	8,049,682	4,438,194	1,290,529,040	100.0%
*Full week includes 4 days from FY16																						