



WEEKLY SALES SUMMARY

Unaudited

Week Ending: 12/11/2021

**Texas Lottery Commission
Fiscal Year to Date Sales Comparison
Unaudited**

Through the Week Ending: 12/11/2021 (15 weeks)

Sales by Game	FY 2020*	FY 2021**	FY 2022	\$ Change		% Change	
				FY 2022 to FY 2020	FY 2022 to FY 2021 to	FY 2022 to FY 2020	FY 2022 to FY 2021 to
Scratch Tickets	\$ 1,371,181,829	\$ 1,665,676,729	\$ 1,802,184,396	\$ 431,002,567	\$ 136,507,667	31.4%	8.2%
Lotto Texas	31,289,532	45,737,284	36,181,374	4,891,842	-9,555,910	15.6%	-20.9%
Lotto Extra	8,107,832	12,937,197	11,290,678	3,182,846	-1,646,519	39.3%	-12.7%
Pick 3	68,310,125	76,840,334	76,402,403	8,092,278	-437,931	11.8%	-0.6%
Pick 3 Fireball	4,853,817	6,420,641	6,997,075	2,143,259	576,435	44.2%	9.0%
Cash Five	12,803,530	13,908,136	13,897,287	1,093,757	-10,849	8.5%	-0.1%
Texas Two Step	17,191,980	17,623,277	17,538,629	346,649	-84,648	2.0%	-0.5%
Mega Millions	61,213,080	54,183,524	57,610,864	-3,602,216	3,427,340	-5.9%	6.3%
Megaplier	10,124,224	9,669,268	10,587,844	463,620	918,576	4.6%	9.5%
MM Just the Jackpot	251,343	222,330	224,358	-26,985	2,028	-10.7%	0.9%
Daily 4	31,822,086	33,273,437	32,942,586	1,120,500	-330,852	3.5%	-1.0%
Daily 4 Fireball	4,206,761	5,141,287	6,088,459	1,881,698	947,173	44.7%	18.4%
Powerball	48,835,742	55,582,789	109,286,440	60,450,698	53,703,651	123.8%	96.6%
Power Play	8,479,592	9,956,595	19,220,145	10,740,553	9,263,550	126.7%	93.0%
All or Nothing	9,684,101	11,059,496	11,898,760	2,214,659	839,264	22.9%	7.6%
Total	\$ 1,688,355,574	\$ 2,018,232,323	\$ 2,212,351,298	\$ 523,995,724	\$ 194,118,975	31.0%	9.6%

* 3 extra days

**1 extra day

Texas Lottery Commission
Fiscal Year Over Year Change in Sales
Unaudited
FY 2022 Compared to FY 2021

		SCRATCH TICKETS				DRAW GAMES				TOTAL SALES			
Week	FY 2022 Week Ending	FY 2022	FY 2021	Difference	% change - Cumulative Sales	FY 2022	FY 2021	Difference	% change - Cumulative Sales	FY 2022	FY 2021	Difference	% change - Cumulative Sales
1	9/4/2021*	\$73,465,895	\$88,381,162	(\$14,915,267)	-16.9%	\$19,754,024	\$22,327,441	(\$2,573,417)	-11.5%	\$93,219,919	\$110,708,603	(\$17,488,684)	-15.8%
2	9/11/2021	\$117,404,128	\$115,145,117	\$2,259,011	2.0%	\$30,567,724	\$25,865,986	\$4,701,738	18.2%	\$147,971,852	\$141,011,103	\$6,960,749	4.9%
3	9/18/2021	\$121,522,543	\$117,098,316	\$4,424,227	3.8%	\$34,044,343	\$25,689,861	\$8,354,482	32.5%	\$155,566,886	\$142,788,177	\$12,778,709	8.9%
4	9/25/2021	\$121,751,048	\$113,153,550	\$8,597,498	7.6%	\$33,618,247	\$24,320,273	\$9,297,974	38.2%	\$155,369,295	\$137,473,823	\$17,895,472	13.0%
5	10/2/2021	\$127,128,919	\$114,375,276	\$12,753,643	11.2%	\$41,420,853	\$23,460,330	\$17,960,523	76.6%	\$168,549,772	\$137,835,606	\$30,714,166	22.3%
6	10/9/2021	\$121,962,687	\$114,802,883	\$7,159,804	6.2%	\$31,994,174	\$21,716,732	\$10,277,442	47.3%	\$153,956,861	\$136,519,615	\$17,437,246	12.8%
7	10/16/2021	\$121,035,307	\$113,280,669	\$7,754,638	6.8%	\$23,150,459	\$20,664,725	\$2,485,734	12.0%	\$144,185,766	\$133,945,394	\$10,240,372	7.6%
8	10/23/2021	\$121,223,866	\$111,745,204	\$9,478,662	8.5%	\$23,980,968	\$21,165,208	\$2,815,761	13.3%	\$145,204,834	\$132,910,412	\$12,294,423	9.3%
9	10/30/2021	\$121,466,419	\$111,272,152	\$10,194,267	9.2%	\$22,663,805	\$22,136,334	\$527,471	2.4%	\$144,130,224	\$133,408,486	\$10,721,738	8.0%
10	11/6/2021	\$123,385,510	\$113,620,007	\$9,765,503	8.6%	\$23,377,828	\$22,606,708	\$771,120	3.4%	\$146,763,338	\$136,226,715	\$10,536,623	7.7%
11	11/13/2021	\$124,592,327	\$109,577,081	\$15,015,246	13.7%	\$23,964,090	\$22,749,434	\$1,214,656	5.3%	\$148,556,417	\$132,326,515	\$16,229,902	12.3%
12	11/20/2021	\$129,630,920	\$114,446,332	\$15,184,588	13.3%	\$24,189,686	\$23,397,417	\$792,269	3.4%	\$153,820,606	\$137,843,749	\$15,976,857	11.6%
13	11/27/2021	\$121,428,296	\$106,113,701	\$15,314,595	14.4%	\$24,228,401	\$23,890,237	\$338,164	1.4%	\$145,656,697	\$130,003,938	\$15,652,759	12.0%
14	12/4/2021	\$128,910,581	\$111,508,837	\$17,401,744	15.6%	\$26,157,280	\$26,132,516	\$24,764	0.1%	\$155,067,861	\$137,641,353	\$17,426,508	12.7%
15	12/11/2021	\$127,275,950	\$111,156,442	\$16,119,508	14.5%	\$27,055,024	\$26,432,394	\$622,630	2.4%	\$154,330,974	\$137,588,836	\$16,742,138	12.2%
16	12/18/2021		\$112,212,350				\$27,895,989				\$140,108,339		
17	12/25/2021		\$119,456,586				\$30,653,848				\$150,110,434		
18	1/1/2022		\$127,122,270				\$38,528,413				\$165,650,683		
19	1/8/2022		\$133,494,933				\$57,484,861				\$190,979,794		
20	1/15/2022		\$127,542,833				\$87,788,743				\$215,331,576		
21	1/22/2022		\$130,328,004				\$97,504,542				\$227,832,546		
22	1/29/2022		\$130,076,595				\$24,692,518				\$154,769,113		
23	2/5/2022		\$136,640,103				\$24,693,211				\$161,333,314		
24	2/12/2022		\$124,939,795				\$23,636,934				\$148,576,729		
25	2/19/2022		\$75,402,427				\$13,683,523				\$89,085,950		
26	2/26/2022		\$126,573,041				\$23,389,855				\$149,962,896		
27	3/5/2022		\$133,200,697				\$25,627,875				\$158,828,572		
28	3/12/2022		\$134,601,912				\$26,650,604				\$161,252,516		
29	3/19/2022		\$153,635,044				\$27,014,869				\$180,649,913		
30	3/26/2022		\$156,511,371				\$27,238,714				\$183,750,085		
31	4/2/2022		\$158,758,180				\$25,817,113				\$184,575,293		
32	4/9/2022		\$152,261,121				\$25,896,084				\$178,157,205		
33	4/16/2022		\$149,946,632				\$26,330,496				\$176,277,128		
34	4/23/2022		\$147,956,805				\$26,462,493				\$174,419,298		
35	4/30/2022		\$149,268,466				\$28,003,294				\$177,271,760		
36	5/7/2022		\$144,423,251				\$29,055,332				\$173,478,583		
37	5/14/2022		\$143,355,893				\$31,496,103				\$174,851,996		
38	5/21/2022		\$141,392,410				\$35,173,326				\$176,565,736		
39	5/28/2022		\$137,051,585				\$25,478,731				\$162,530,316		
40	6/4/2022		\$138,140,582				\$25,330,096				\$163,470,678		
41	6/11/2022		\$131,984,128				\$21,831,386				\$153,815,514		
42	6/18/2022		\$129,880,069				\$21,982,398				\$151,862,467		

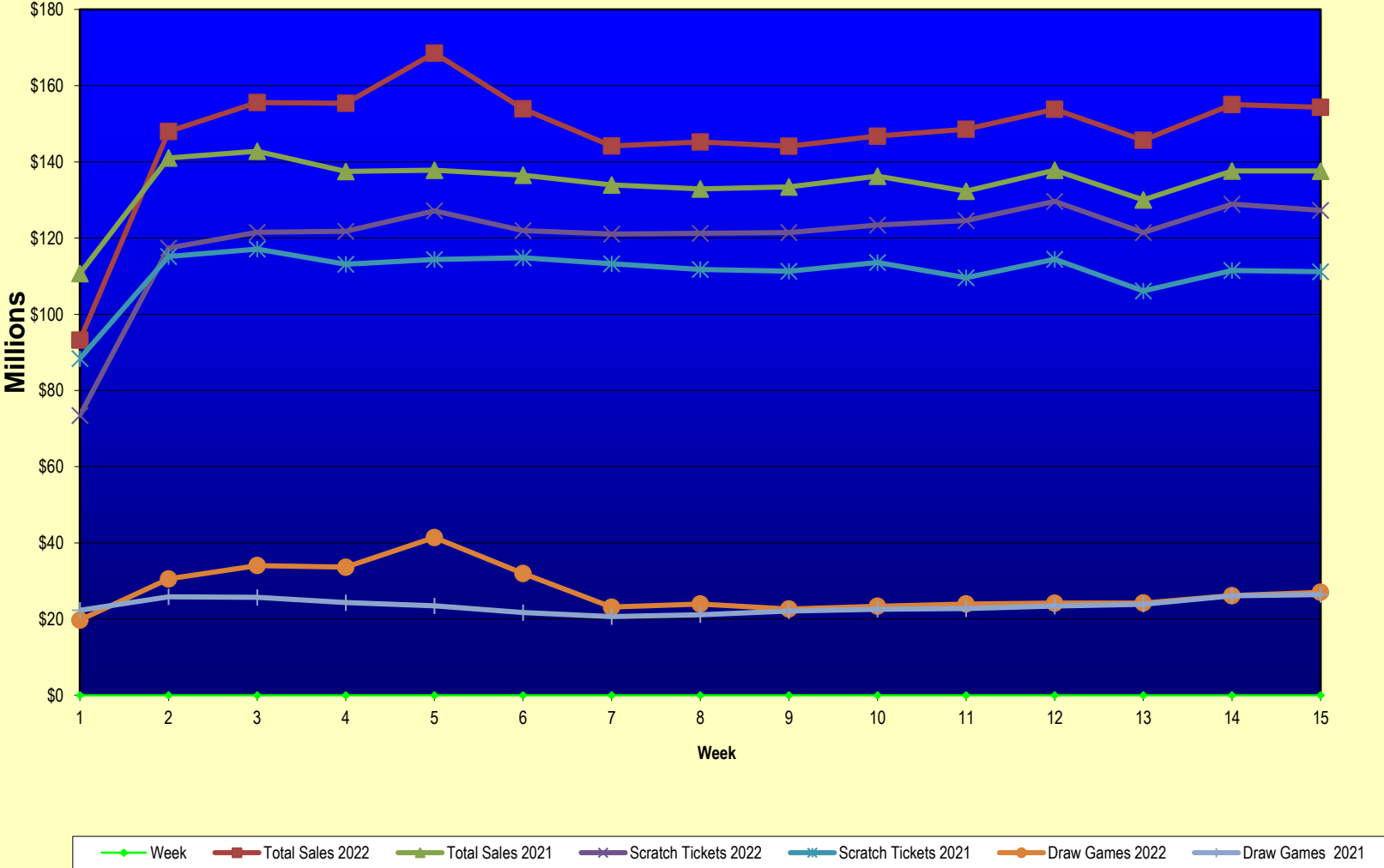
Texas Lottery Commission
Fiscal Year Over Year Change in Sales
 Unaudited
 FY 2022 Compared to FY 2021

		SCRATCH TICKETS				DRAW GAMES				TOTAL SALES			
FY 2022		FY 2022	FY 2021	Difference	% change - Cumulative Sales	FY 2022	FY 2021	Difference	% change - Cumulative Sales	FY 2022	FY 2021	Difference	% change - Cumulative Sales
Week	Week Ending												
43	6/25/2022		\$128,432,805				\$22,386,397				\$150,819,202		
44	7/2/2022		\$134,775,705				\$23,967,723				\$158,743,428		
45	7/9/2022		\$127,718,775				\$23,105,336				\$150,824,111		
46	7/16/2022		\$127,681,286				\$23,671,929				\$151,353,215		
47	7/23/2022		\$124,610,457				\$24,186,190				\$148,796,647		
48	7/30/2022		\$126,437,509				\$25,623,636				\$152,061,145		
49	8/6/2022		\$125,100,277				\$25,280,445				\$150,380,722		
50	8/13/2022		\$121,350,965				\$25,593,011				\$146,943,976		
51	8/20/2022		\$121,080,932				\$25,800,409				\$146,881,341		
52	8/27/2022		\$118,866,934				\$28,610,926				\$147,477,860		
	8/31/2022**		\$49,085,562				\$10,105,437				\$59,190,999		
Total thru Current Week		\$1,802,184,396	\$1,665,676,729	\$136,507,667	8.2%	\$410,166,902	\$352,555,594	\$57,611,308	16.3%	\$2,212,351,298	\$2,018,232,323	\$194,118,975	9.6%
Fiscal Year Total		\$1,802,184,396	\$6,616,975,019			\$410,166,902	\$1,490,228,375			\$2,212,351,298	\$8,107,203,394		

* FY 22 includes 4 days; FY 21 includes 5 days

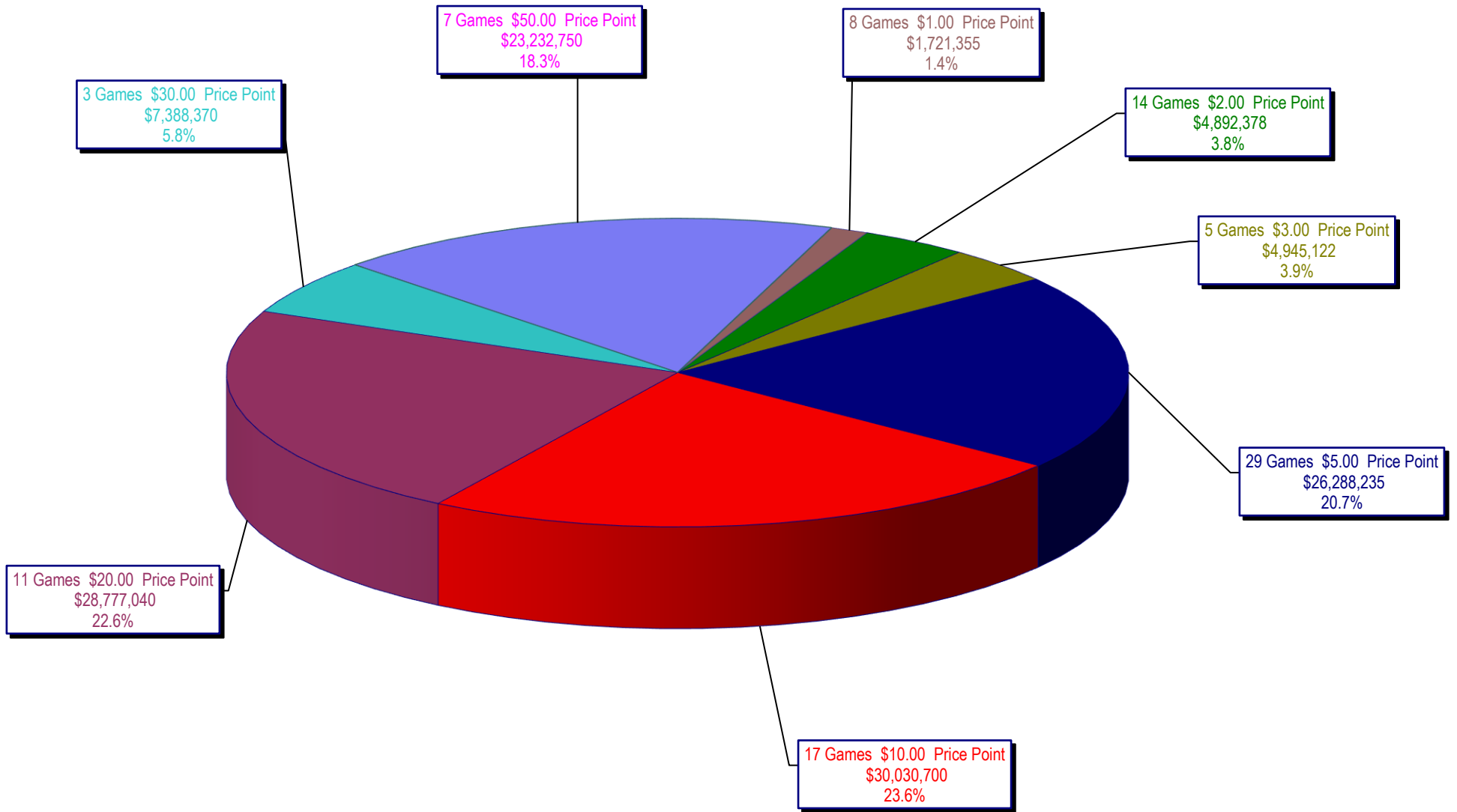
** FY 22 includes 4 days; FY 21 includes 3 days

Texas Lottery Commission Fiscal Year Over Year Change in Sales



Note: Report is prepared on a Fiscal Year basis.

Texas Lottery Commission
Scratch Ticket Sales
For the Week Ending 12/11/2021
(Unaudited)



Texas Lottery Commission
All Game Sales
For the Week Ending 12/11/2021
(Unaudited)

