



WEEKLY SALES SUMMARY

Unaudited

Week Ending: 12/12/2009

Texas Lottery Commission
Fiscal Year to Date Sales Comparison
Unaudited

Through the week ending 12/12/2009 (15 weeks)

Sales by Game	FY 2008 *	FY 2009 **	FY 2010	\$ Change		% Change	
				FY 2010 to FY 2008	FY 2010 to FY 2009 to	FY 2010 to FY 2008	FY 2010 to FY 2009
Instants	\$ 793,073,159	\$ 755,492,373	\$ 764,457,979	\$ -28,615,180	\$ 8,965,606	-3.6%	1.2%
Lotto Texas	62,786,029	51,271,500	80,293,543	17,507,514	29,022,043	27.9%	56.6%
Pick 3	81,771,102	78,190,306	75,645,849	-6,125,253	-2,544,457	-7.5%	-3.3%
Pick 3 Sum It Up	1,041,602	1,663,934	1,521,850	480,248	-142,084	-	-8.5%
Cash 5	22,513,185	20,075,545	19,019,503	-3,493,682	-1,056,042	-15.5%	-5.3%
Texas Two Step	12,211,056	12,924,568	12,417,086	206,030	-507,482	1.7%	-3.9%
Mega Millions	41,822,174	50,584,482	53,509,218	11,687,044	2,924,737	27.9%	5.8%
Megaplier	10,489,950	11,855,982	12,091,026	1,601,076	235,044	15.3%	2.0%
Daily 4	11,591,547	11,833,155	14,538,033	2,946,486	2,704,878	-	22.9%
Daily 4 Sum It Up	3,218,191	1,541,828	1,414,319	-1,803,873	-127,509	-	-8.3%
Total	\$ 1,040,517,995	\$ 995,433,671	\$ 1,034,908,405	\$ -5,609,590	\$ 39,474,735	-0.5%	4.0%

* 3 extra days ** 1 extra day

Texas Lottery Commission
 Fiscal Year to Date Cumulative Average Sales Comparison
 Unaudited

Through the week ending 12/12/2009 (15 weeks)

Sales by Game	FY 2008	FY 2009	FY 2010
Instants	\$ 7,481,822	\$ 7,264,350	\$ 7,421,922
Lotto Texas	592,321	492,995	779,549
Pick 3	771,425	751,830	734,426
Pick 3 Sum It Up	9,826	15,999	14,775
Cash 5	212,389	193,034	184,655
Texas Two Step	115,199	124,275	120,554
Mega Millions	394,549	486,389	519,507
Megaplier	98,962	114,000	117,389
Daily 4	109,354	113,780	141,146
Daily 4 Sum It Up	30,360	14,825	13,731
Total	\$ <u>9,816,207</u>	\$ <u>9,571,478</u>	\$ <u>10,047,654</u>
	thru 12/15/2007 106 days	thru 12/13/2008 104 days	thru 12/12/2009 103 days

Texas Lottery Commission
Fiscal Year Over Year Change in Sales
Unaudited
FY 2010 Compared to FY 2009

Week	FY 2010 Week Ending	INSTANT TICKETS				ON-LINE GAMES				TOTAL SALES			
		FY 2010	FY 2009	Difference	% change - Cumulative Sales	FY 2010	FY 2009	Difference	% change - Cumulative Sales	FY 2010	FY 2009	Difference	% change - Cumulative Sales
1	9/5/2009**	\$40,148,241	\$44,890,104	(\$4,741,863)	-10.6%	\$15,859,194	\$14,722,011	\$1,137,184	7.7%	\$56,007,435	\$59,612,115	(\$3,604,680)	-6.0%
2	9/12/2009	\$49,896,100	\$46,309,551	\$3,586,549	7.7%	\$18,206,315	\$13,704,860	\$4,501,455	32.8%	\$68,102,415	\$60,014,411	\$8,088,004	13.5%
3	9/19/2009	\$50,971,937	\$42,923,171	\$8,048,766	18.8%	\$18,859,622	\$12,291,263	\$6,568,359	53.4%	\$69,831,559	\$55,214,434	\$14,617,125	26.5%
4	9/26/2009	\$49,975,243	\$47,042,801	\$2,932,442	6.2%	\$19,345,435	\$14,222,339	\$5,123,096	36.0%	\$69,320,678	\$61,265,140	\$8,055,538	13.1%
5	10/3/2009	\$52,283,569	\$50,747,162	\$1,536,407	3.0%	\$20,991,695	\$15,784,472	\$5,207,223	33.0%	\$73,275,264	\$66,531,634	\$6,743,630	10.1%
6	10/10/2009	\$52,238,261	\$49,763,789	\$2,474,472	5.0%	\$21,547,439	\$15,622,498	\$5,924,941	37.9%	\$73,785,700	\$65,386,287	\$8,399,413	12.8%
7	10/17/2009	\$50,806,599	\$49,299,053	\$1,507,546	3.1%	\$23,114,594	\$15,167,940	\$7,946,654	52.4%	\$73,921,193	\$64,466,993	\$9,454,200	14.7%
8	10/24/2009	\$50,731,592	\$49,977,581	\$754,011	1.5%	\$17,274,411	\$14,525,843	\$2,748,568	18.9%	\$68,006,003	\$64,503,424	\$3,502,579	5.4%
9	10/31/2009	\$50,684,853	\$50,346,542	\$338,311	0.7%	\$15,710,720	\$14,838,845	\$871,876	5.9%	\$66,395,573	\$65,185,387	\$1,210,187	1.9%
10	11/7/2009	\$54,633,928	\$54,860,087	(\$226,159)	-0.4%	\$16,961,611	\$16,057,069	\$904,542	5.6%	\$71,595,539	\$70,917,156	\$678,383	1.0%
11	11/14/2009	\$52,109,218	\$53,484,812	(\$1,375,594)	-2.6%	\$16,407,349	\$15,829,819	\$577,530	3.6%	\$68,516,567	\$69,314,631	(\$798,064)	-1.2%
12	11/21/2009	\$52,427,881	\$52,806,511	(\$378,630)	-0.7%	\$15,829,561	\$16,460,748	(\$631,187)	-3.8%	\$68,257,442	\$69,267,259	(\$1,009,817)	-1.5%
13	11/28/2009	\$50,519,477	\$52,199,741	(\$1,680,264)	-3.2%	\$15,710,447	\$17,397,576	(\$1,687,129)	-9.7%	\$66,229,924	\$69,597,317	(\$3,367,393)	-4.8%
14	12/5/2009	\$54,376,448	\$56,731,851	(\$2,355,403)	-4.2%	\$16,905,341	\$20,363,789	(\$3,458,449)	-17.0%	\$71,281,789	\$77,095,640	(\$5,813,852)	-7.5%
15	12/12/2009	\$52,654,632	\$54,109,617	(\$1,454,985)	-2.7%	\$17,726,695	\$22,952,228	(\$5,225,533)	-22.8%	\$70,381,327	\$77,061,845	(\$6,680,518)	-8.7%
16	12/19/2009		\$55,777,328				\$15,833,517				\$71,610,845		
17	12/26/2009		\$57,597,885				\$15,851,771				\$73,449,656		
18	1/2/2010		\$57,582,115				\$16,900,028				\$74,482,143		
19	1/9/2010		\$54,250,945				\$16,203,220				\$70,454,165		
20	1/16/2010		\$51,625,339				\$15,701,605				\$67,326,944		
21	1/23/2010		\$52,789,573				\$15,897,473				\$68,687,046		
22	1/30/2010		\$55,453,471				\$16,908,272				\$72,361,743		
23	2/6/2010		\$62,247,711				\$18,354,314				\$80,602,025		
24	2/13/2010		\$60,509,056				\$19,218,078				\$79,727,134		
25	2/20/2010		\$59,194,623				\$21,098,199				\$80,292,822		
26	2/27/2010		\$58,857,216				\$24,116,924				\$82,974,140		
27	3/6/2010		\$59,552,257				\$23,995,136				\$83,547,393		
28	3/13/2010		\$53,754,084				\$18,769,831				\$72,523,915		
29	3/20/2010		\$52,581,107				\$15,903,038				\$68,484,145		
30	3/27/2010		\$52,560,961				\$16,094,933				\$68,655,894		
31	4/3/2010		\$56,249,759				\$17,357,002				\$73,606,761		
32	4/10/2010		\$54,440,987				\$17,660,600				\$72,101,587		
33	4/17/2010		\$52,755,834				\$18,469,585				\$71,225,419		
34	4/24/2010		\$51,450,968				\$20,216,898				\$71,667,866		
35	5/1/2010		\$52,327,090				\$23,520,573				\$75,847,663		
36	5/8/2010		\$53,214,412				\$16,241,207				\$69,455,619		
37	5/15/2010		\$50,785,227				\$15,990,544				\$66,775,771		
38	5/22/2010		\$56,567,077				\$15,874,447				\$72,441,524		
39	5/29/2010		\$55,359,239				\$16,040,196				\$71,399,435		
40	6/5/2010		\$60,250,125				\$16,301,599				\$76,551,724		
41	6/12/2010		\$54,979,517				\$16,143,215				\$71,122,732		
42	6/19/2010		\$53,109,433				\$16,357,924				\$69,467,357		

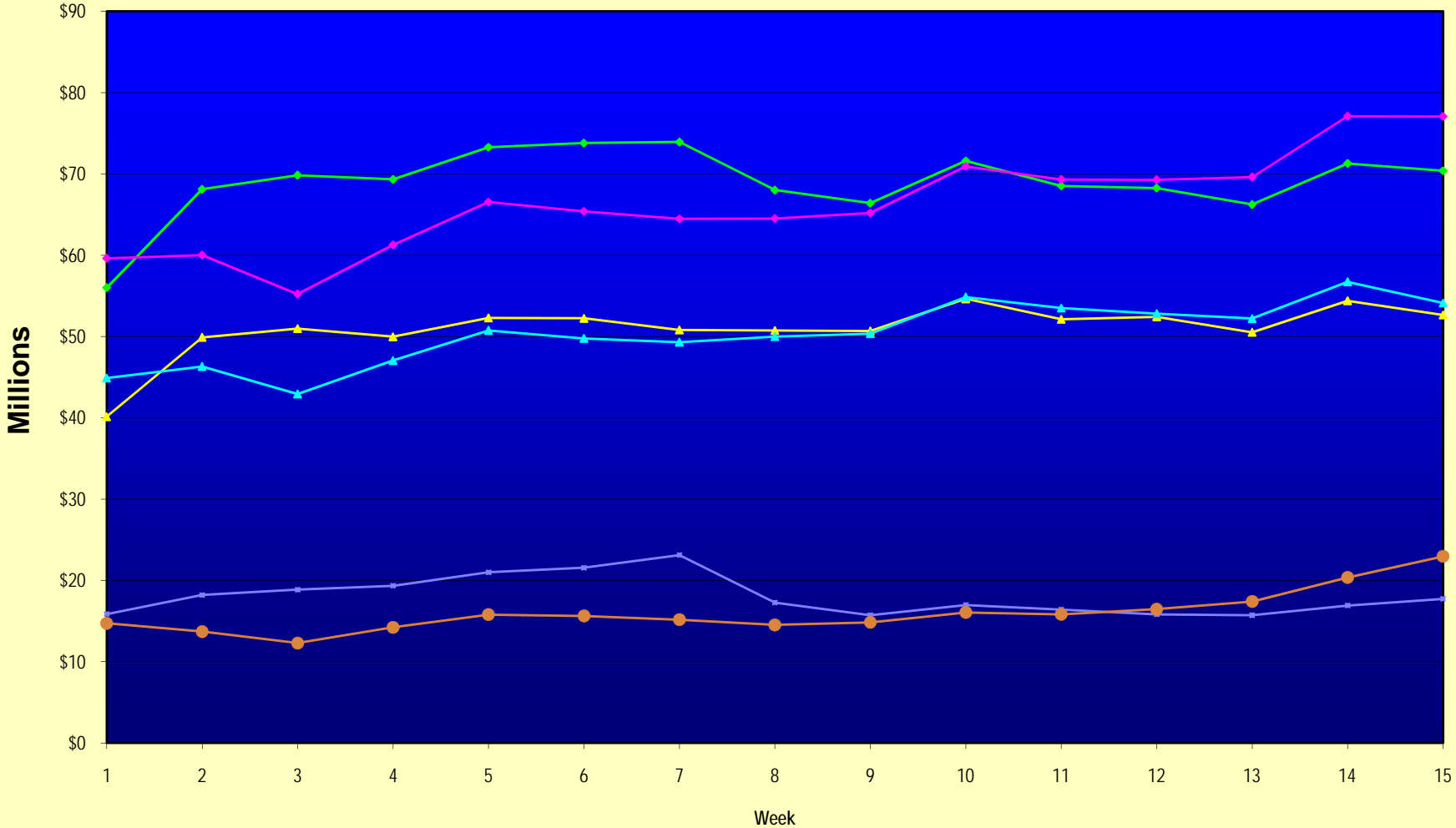
Note: Week 1 is not a full week of sales as this report is prepared on a Fiscal Year basis.

Texas Lottery Commission
Fiscal Year Over Year Change in Sales
Unaudited
FY 2010 Compared to FY 2009

Week	FY 2010 Week Ending	INSTANT TICKETS				ON-LINE GAMES				TOTAL SALES			
		FY 2010	FY 2009	Difference	% change - Cumulative Sales	FY 2010	FY 2009	Difference	% change - Cumulative Sales	FY 2010	FY 2009	Difference	% change - Cumulative Sales
43	6/26/2010		\$53,431,083				\$16,786,203				\$70,217,286		
44	7/3/2010		\$55,518,615				\$18,292,421				\$73,811,036		
45	7/10/2010		\$53,004,390				\$17,842,530				\$70,846,920		
46	7/17/2010		\$52,498,940				\$16,138,341				\$68,637,281		
47	7/24/2010		\$51,550,731				\$16,748,137				\$68,298,868		
48	7/31/2010		\$51,893,977				\$18,065,180				\$69,959,157		
49	8/7/2010		\$54,506,395				\$19,258,117				\$73,764,512		
50	8/14/2010		\$51,766,530				\$20,828,293				\$72,594,823		
51	8/21/2010		\$51,909,040				\$24,913,396				\$76,822,436		
52	8/28/2010		\$50,848,517				\$35,661,563				\$86,510,080		
53			\$13,288,367				\$3,085,816				\$16,374,183		
Total thru Current Week		\$764,457,979	\$755,492,373	\$8,965,606	1.2%	\$270,450,426	\$239,941,298	\$30,509,129	12.7%	\$1,034,908,405	\$995,433,671	\$39,474,735	4.0%
Fiscal Year Total		\$764,457,979	\$2,791,532,297			\$270,450,426	\$928,581,414			\$1,034,908,405	\$3,720,113,711		

** FY 2010 includes 5 days; FY 2009 includes 6 days

Texas Lottery Commission Fiscal Year Over Year Change in Sales



◆ Total Sales 2010
 ◆ Total Sales 2009
 ▲ Instant Tickets 2010
 ▲ Instant Tickets 2009
 ◆ On-Line Games 2010
 ● On-Line Games 2009

Note: Week 1 is not a full week of sales as this report is prepared on a Fiscal Year basis.

Texas Lottery Commission
Instant Tickets by Price Point
Sales, Prize Expense, Sales Contribution and Payout Percentage With Year Over Year Changes
Unaudited

Fiscal Year	Price Point	# of Active Games	FY Sales	% of Instant Ticket Sales	Year over Year Change in Sales	FY Prize Expense	Year over Year Change in Prize Expense	FY Sales Contribution	Year over Year Change in Contribution	Average Prize Payout %	Year over Year Change in Payout %
2009	\$1.00	34	64,161,992	8.5%		38,654,982		25,507,010		60.2%	0.2%
thru	\$2.00	28	130,329,450	17.3%		84,517,517		45,811,933		64.8%	-0.7%
12/13/2008	\$3.00	13	83,709,615	11.1%		55,033,204		28,676,411		65.7%	0.0%
	\$5.00	31	228,935,009	30.3%		155,710,687		73,224,322		68.0%	0.1%
	\$7.00	6	32,575,557	4.3%		22,158,556		10,417,001		68.0%	0.0%
	\$10.00	13	100,659,060	13.3%		70,449,263		30,209,797		70.0%	0.0%
	\$20.00	7	73,672,700	9.8%		52,877,357		20,795,343		71.8%	0.0%
	\$25.00	1	2,377,900	0.3%		1,729,556		648,344		72.7%	0.2%
	\$30.00	3	6,914,640	0.9%		5,011,454		1,903,186		72.5%	0.1%
	\$50.00	3	32,156,450	4.3%		23,252,931		8,903,519		72.3%	0.2%
Total		139	\$755,492,373			\$509,395,508		\$246,096,865		67.4%	-0.4%
2010	\$1.00	27	63,949,590	8.4%		38,442,432		25,507,158		60.1%	0.0%
thru	\$2.00	30	109,686,108	14.3%		72,725,398		36,960,710		66.3%	1.8%
12/12/2009	\$3.00	14	95,385,876	12.5%		62,705,054		32,680,822		65.7%	0.2%
	\$5.00	33	214,403,833	28.0%		145,625,588		68,778,245		67.9%	-0.1%
	\$7.00	5	32,070,682	4.2%		21,807,534		10,263,148		68.0%	0.0%
	\$10.00	12	111,532,310	14.6%		78,018,529		33,513,781		70.0%	0.0%
	\$20.00	5	116,737,380	15.3%		87,126,808		29,610,572		74.6%	2.0%
	\$25.00	0	-	0.0%		-		-		0.0%	-100.0%
	\$30.00	0	-	0.0%		-		-		0.0%	-100.0%
	\$50.00	2	20,692,200	2.7%		16,029,068		4,663,132		77.5%	3.9%
Total		128	\$764,457,979			\$522,480,410		\$241,977,569		68.3%	0.9%
Variance	\$1.00	-7	-212,402		-0.3%	-212,551	-0.5%	149	0.0%	-0.13%	
2010 to	\$2.00	2	-20,643,342		-15.8%	-11,792,119	-14.0%	-8,851,223	-19.3%	1.45%	
2009	\$3.00	1	11,676,261		13.9%	7,671,849	13.9%	4,004,412	14.0%	0.00%	
	\$5.00	2	-14,531,176		-6.3%	-10,085,100	-6.5%	-4,446,076	-6.1%	-0.09%	
	\$7.00	-1	-504,875		-1.5%	-351,022	-1.6%	-153,853	-1.5%	-0.02%	
	\$10.00	-1	10,873,250		10.8%	7,569,266	10.7%	3,303,984	10.9%	-0.04%	
	\$20.00	-2	43,064,680		58.5%	34,249,451	64.8%	8,815,229	42.4%	2.86%	
	\$25.00	-1	-2,377,900		-100.0%	-1,729,556	-100.0%	-648,344	-100.0%	-72.73%	
	\$30.00	-3	-6,914,640		-100.0%	-5,011,454	-100.0%	-1,903,186	-100.0%	-72.48%	
	\$50.00	-1	-11,464,250		-35.7%	-7,223,863	-31.1%	-4,240,387	-47.6%	5.15%	
Total		-11	\$8,965,606		1.2%	\$13,084,902	2.6%	-\$4,119,296	-1.7%	0.92%	

Texas Lottery Commission
Instant Tickets by Price Point
Sales, Prize Expense, Sales Contribution and Payout Percentage With Year Over Year Changes
 Unaudited

Notes - Instant Ticket Variances

		FY 2010		FY 2009		Difference
Sales	\$1 - \$7		\$515,496,089		\$539,711,623	-\$24,215,534
Prize Exp.	\$1 - \$7		\$341,306,005		\$356,074,946	-\$14,768,942
Sales Cont.	\$1 - \$7		\$174,190,084		\$183,636,677	-\$9,446,592
Prize Exp. %	\$1 - \$7		66.2%		66.0%	0.2%
		FY 2010		FY 2009		Difference
Sales	\$10 - \$50		\$248,961,890		\$215,780,750	\$33,181,140
Prize Exp.	\$10 - \$50		\$181,174,405		\$153,320,562	\$27,853,843
Sales Cont.	\$10 - \$50		\$67,787,485		\$62,460,188	\$5,327,297
Prize Exp. %	\$10 - \$50		72.8%		71.1%	1.7%
		FY 2010		FY 2009		Difference
Sales	Instant		\$764,457,979		\$755,492,373	\$8,965,606
Prize Exp.	Instant		\$522,480,410		\$509,395,508	\$13,084,902
Sales Cont.	Instant		\$241,977,569		\$246,096,865	-\$4,119,296
Prize Exp. %	Instant		68.3%		67.4%	0.9%

		FY 2010		FY 2009		Difference
Sales	\$1 - \$10		\$627,028,399		\$640,370,683	-\$13,342,284
Prize Exp.	\$1 - \$10		\$419,324,533		\$426,524,209	-\$7,199,676
Sales Cont.	\$1 - \$10		\$207,703,866		\$213,846,474	-\$6,142,608
Prize Exp. %	\$1 - \$10		66.9%		66.6%	0.3%
		FY 2010		FY 2009		Difference
Sales	\$20 - \$50		\$137,429,580		\$115,121,690	\$22,307,890
Prize Exp.	\$20 - \$50		\$103,155,877		\$82,871,299	\$20,284,578
Sales Cont.	\$20 - \$50		\$34,273,703		\$32,250,391	\$2,023,312
Prize Exp. %	\$20 - \$50		75.1%		72.0%	3.1%
		FY 2010		FY 2009		Difference
Sales	Instant		\$764,457,979		\$755,492,373	\$8,965,606
Prize Exp.	Instant		\$522,480,410		\$509,395,508	\$13,084,902
Sales Cont.	Instant		\$241,977,569		\$246,096,865	-\$4,119,296
Prize Exp. %	Instant		68.3%		67.4%	0.9%

Texas Lottery Commission
Weekly Sales Summary
& Comparison to Previous Week
 Unaudited

	Week Ending 12/12/2009	% of Sales	Week Ending 12/05/2009	% of Sales	\$ change	% change
	<u>THIS WEEK</u>		<u>LAST WEEK</u>			
Total Sales	<u>\$70,381,327</u>		<u>\$71,281,789</u>		<u>-\$900,462</u>	-1.26%
Instant Tickets	<u>\$52,654,632</u>	74.8%	<u>\$54,376,448</u>	76.3%	<u>-\$1,721,816</u>	-3.17%
Lotto Texas	\$4,105,013	5.8%	\$4,004,632	5.6%	\$100,381	2.51%
Pick 3	\$5,091,389	7.2%	\$5,393,458	7.6%	-\$302,069	-5.60%
Pick 3 Sum It Up	\$102,614	0.1%	\$111,442	0.2%	-\$8,828	-7.92%
Cash 5	\$1,294,933	1.8%	\$1,288,282	1.8%	\$6,651	0.52%
Texas Two Step	\$1,075,732	1.5%	\$873,210	1.2%	\$202,522	23.19%
Mega Millions	\$4,054,401	5.8%	\$3,297,486	4.6%	\$756,915	22.95%
Megaplier	\$874,842	1.2%	\$773,136	1.1%	\$101,706	13.15%
Daily 4	\$1,030,472	1.5%	\$1,063,424	1.5%	-\$32,953	-3.10%
Daily 4 Sum It Up	\$97,300	0.1%	\$100,271	0.1%	-\$2,972	-2.96%
Total Online Sales	<u>\$17,726,695</u>		<u>\$16,905,341</u>		<u>\$821,354</u>	4.86%

* Totals may not sum due to rounding.

Texas Lottery Commission
Weekly Sales Summary
Unaudited

INSTANT TICKETS
TOP TEN SELLING GAMES

For the Week Ending : 12/12/2009

Rank	Price Point	Game	Sales (Millions)
1	\$ 20	\$500,000,000 BLOCKBUSTER	\$ 4.434
2	\$ 5	MERRY MONEY	\$ 3.352
3	\$ 10	JINGLE JUMBO BUCKS	\$ 2.981
4	\$ 20	MERRY MILLIONAIRE	\$ 2.903
5	\$ 5	WINTER WINNINGS	\$ 2.269
6	\$ 5	FIVE STAR CASH	\$ 1.920
7	\$ 5	\$50,000 CASH WINFALL	\$ 1.812
8	\$ 7	SPARKLING 7'S	\$ 1.710
9	\$ 3	BONUS CASHWORD	\$ 1.599
10	\$ 3	BONUS WORD CASHWORD	\$ 1.595

Texas Lottery Commission
Prize Payout Tracking Report
Unaudited

Through Week Ending 12/12/2009

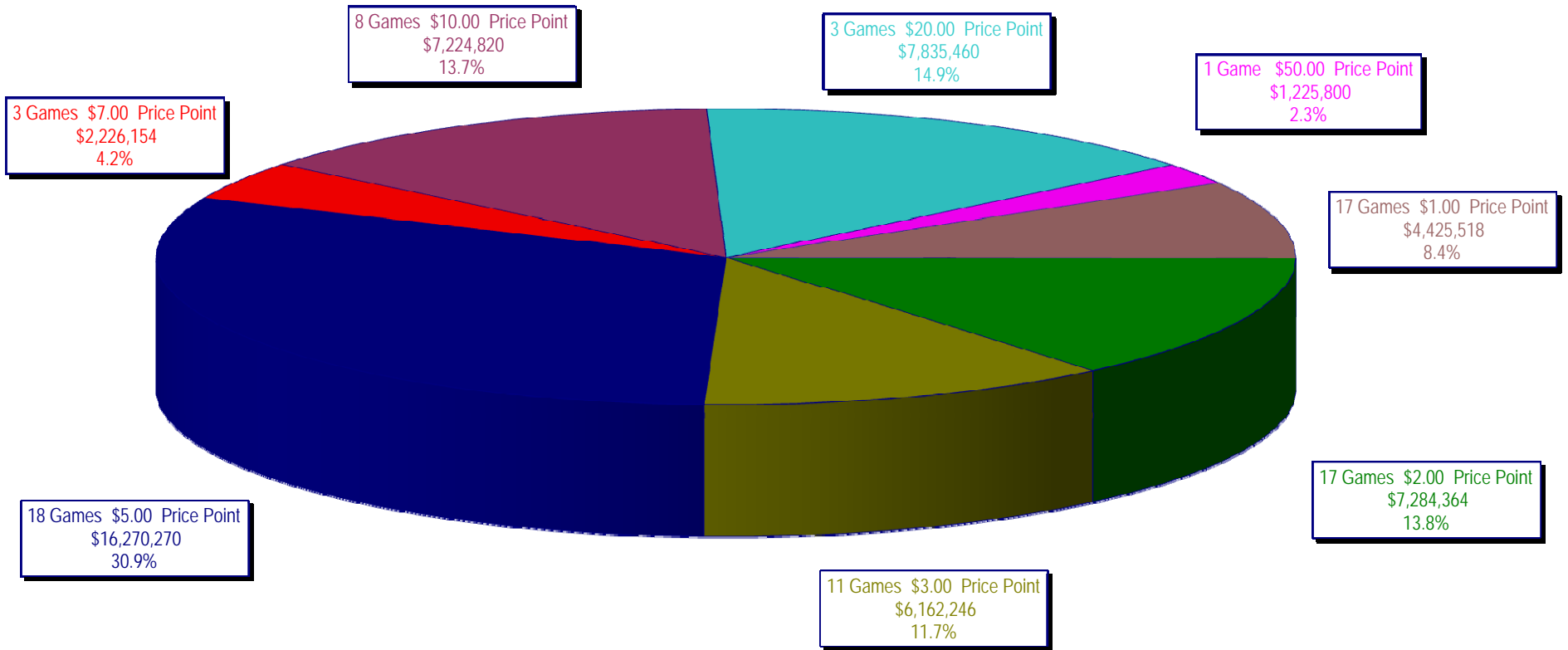
On-Line Sales

		FY Sales Through Week Ending 12/12/2009		FY Prize Expense Through Week Ending 12/12/2009	Actual* Prize Payout	Base Payout (Prize Pool)
Lotto	\$	80,293,543	\$	40,172,190	50.03%	50.00%
Pick 3		75,645,849		34,380,560	45.45%	50.00%
Pick 3 Sum It Up		1,521,850		693,411	45.56%	50.00%
Cash 5		19,019,503		10,474,468	55.07%	50.00%
Texas Two-Step		12,417,086		6,440,113	51.86%	50.00%
Mega Millions		53,509,218		26,871,229	50.22%	50.00%**
Megaplier		12,091,026		3,705,167	30.64%	N/A
Daily 4		14,538,033		7,418,225	51.03%	50.00%
Daily 4-Sum It Up		1,414,319		649,536	45.93%	50.00%
Totals	\$	270,450,426	\$	130,804,899	48.37%	

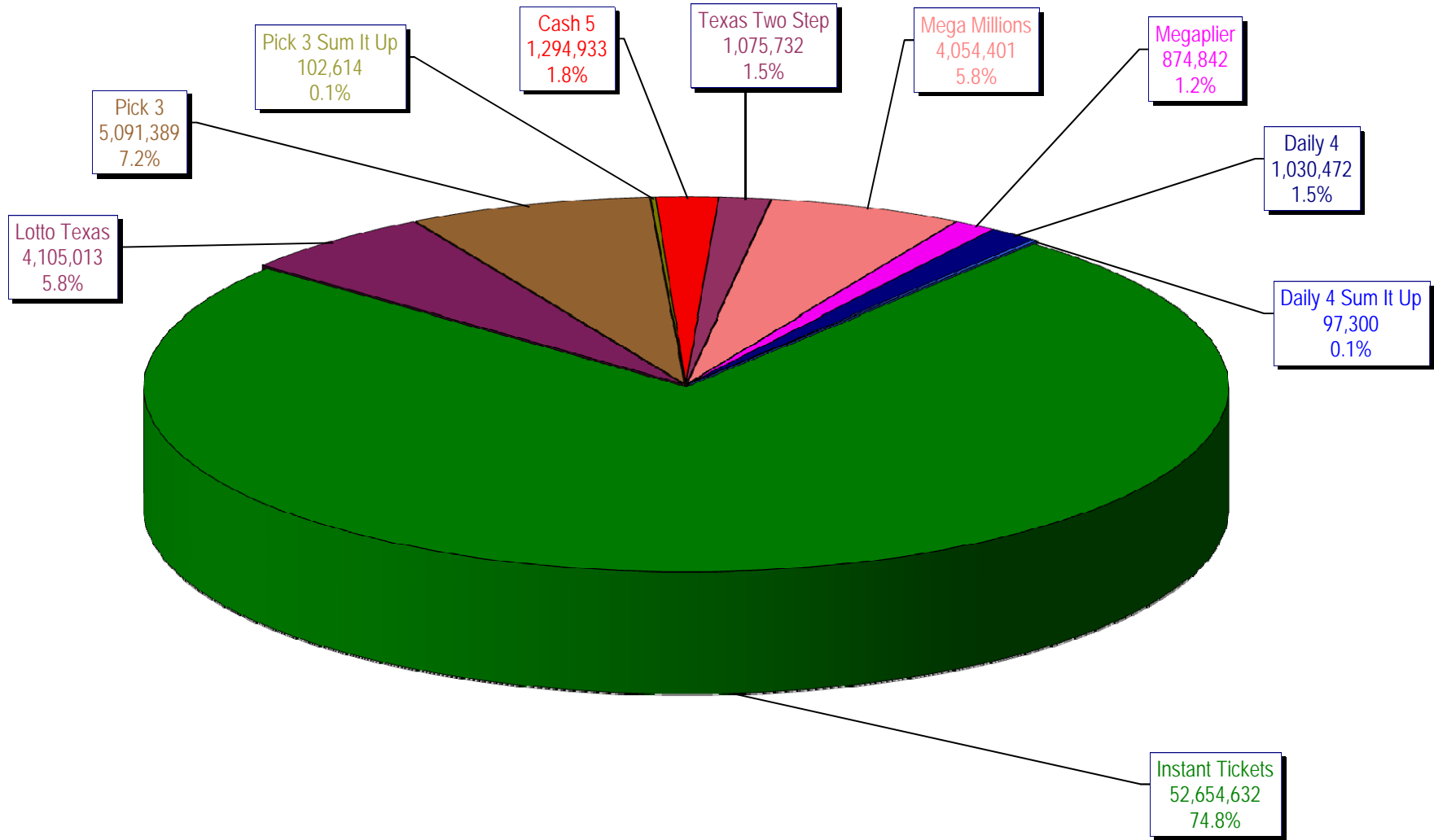
* Before Unclaimed Prizes

** Estimated; depends on # of guaranteed prizes won in Texas

Texas Lottery Commission
Instant Ticket Sales
For the Week Ending 12/12/2009
(Unaudited)



Texas Lottery Commission
All Game Sales
For the Week Ending 12/12/2009
(Unaudited)



Texas Lottery Commission - Weekly Sales Summary for FY 2010 (Unaudited)

Week Ended	Instant Games	New Games & Dates	Lotto Texas	Jackpot W	S	Pick 3	Pick 3 Sum It Up	Cash 5	Texas Two Step	Jackpot M	TH	Mega Millions	Jackpot T	F	Megaplier	Daily 4	Daily 4 Sum It Up	Total	Per Cap.
9/5/2009	53,436,608.00	1183 (\$2,N) - 08/31/09	6,294,287.00	45	47	5,276,229.00	104,886.00	1,338,093.00	1,212,330.00	1.2	200	2,959,401.00	12	12	708,622.00	955,411.00	95,751.00	72,381,618.00	2.98
9/12/2009	49,896,100.00	1200 (\$1,N); 1201 (\$10,N) - 09/07/09	6,426,945.00	49	51	5,109,927.50	104,641.00	1,278,982.00	771,782.00	225	200	2,811,431.00	18	28	693,407.00	918,268.00	90,931.50	68,102,415.00	2.80
9/19/2009	50,971,937.00	1202 (\$3,N); 1185 (\$5,N) - 09/14/09	6,496,645.00	53	55	5,176,010.00	103,700.00	1,295,302.00	803,124.00	200	225	3,164,844.00	38	51	760,088.00	965,671.50	94,237.00	69,831,558.50	2.87
9/26/2009	49,975,243.00	1141 (\$1,N); 1259 (\$3,N) - 09/21/09	6,765,369.00	57	59	4,894,237.50	98,171.00	1,271,129.00	915,249.00	275	400	3,568,088.00	62	75	822,408.00	918,596.00	92,187.50	69,320,678.00	2.85
10/3/2009	52,283,569.00	1203 (\$2,N); 1172 (\$5,N) - 09/28/09	7,003,107.00	61	63	5,156,873.00	102,841.50	1,315,863.00	1,111,913.00	525	650	4,270,019.00	88	105	939,935.00	993,158.50	97,984.50	73,275,263.50	3.01
10/10/2009	52,238,261.00	1205 (\$1,N); 1263 (\$3,N) - 10/05/09	7,061,948.00	64	67	5,050,571.00	102,586.50	1,300,852.00	811,464.00	200	225	5,100,350.00	122	145	1,050,507.00	971,147.50	98,012.50	73,785,699.50	3.03
10/17/2009	50,806,599.00	1187 (\$2,N); 1193 (\$20,N) - 10/12/09	7,262,683.00	70	73	4,990,457.00	99,389.50	1,276,305.00	769,253.00	200	200	6,449,660.00	170	200	1,245,391.00	931,084.00	90,371.00	73,921,192.50	3.04
10/24/2009	50,731,592.00	1188 (\$3,N); 1189 (\$5,N) - 10/19/09	5,785,292.00	76	4	4,845,815.00	93,256.00	1,282,033.00	806,971.00	225	275	2,776,628.00	12	18	663,491.00	931,641.00	89,284.00	68,006,003.00	2.80
10/31/2009	50,684,853.00	1192 (\$10,N); 1186 (\$1,N) - 10/26/09	3,749,006.00	5	6	4,944,409.00	98,542.50	1,289,523.00	815,750.00	375	200	2,988,991.00	28	40	717,574.00	1,006,435.00	100,489.50	66,395,573.00	2.73
11/7/2009	54,633,928.00	1191 (\$7,N) - 11/02/09	3,982,319.00	7	8	5,265,020.50	105,180.50	1,339,215.00	853,140.00	225	275	3,458,403.00	50	63	795,045.00	1,058,564.00	104,724.00	71,595,539.00	2.94
11/14/2009	52,109,218.00	1218 (\$2,N); 1184 (\$5,N) - 11/09/09	3,985,493.00	9	10	5,172,602.50	104,782.00	1,274,573.00	829,607.00	375	200	3,210,618.00	77	12	752,365.00	983,342.50	93,966.00	68,516,567.00	2.82
11/21/2009	52,427,881.00	0	3,943,958.00	11	12	5,123,802.00	104,705.00	1,255,026.00	797,796.00	225	275	2,834,318.00	17	27	687,221.00	990,042.00	92,693.00	68,257,442.00	2.81
11/28/2009	50,519,477.00	1206 (\$1,N); 1190 (\$5,N); 1264 (\$1,N) - 11/23/09	3,966,034.00	13	14	5,043,210.00	102,783.50	1,202,798.00	693,774.00	200	225	2,932,809.00	37	47	691,194.00	985,336.50	92,508.00	66,229,924.00	2.72
12/5/2009	54,376,448.00	0	4,004,632.00	15	16	5,393,458.00	111,441.50	1,288,282.00	873,210.00	250	350	3,297,486.00	57	69	773,136.00	1,063,424.00	100,271.00	71,281,788.50	2.93
12/12/2009	52,654,632.00	1159 (\$2,N); 1182 (\$5,N) - 12/07/09 1196 (\$5,N) - 12/09/09	4,105,013.00	17	18	5,091,389.00	102,613.50	1,294,933.00	1,075,732.00	475	600	4,054,401.00	83	100	874,842.00	1,030,471.50	97,299.50	70,381,326.50	2.89
weekly change	-3.17%		2.51%			-5.60%	-7.92%	0.52%	23.19%			22.95%			13.15%	-3.10%	-2.96%	-1.26%	
	SALES		SALES			SALES	SALES	SALES	SALES			SALES			SALES	SALES	SALES	SALES	% of Sales
Startup to date	37,036,576,278.00		10,559,907,090.00			3,659,243,606.50	13,922,925.50	2,208,923,643.00	490,205,017.00			1,195,039,817.45			277,659,313.00	103,588,243.50	15,168,145.50	55,768,368,051.45	100.0%
Calendar Year to date	2,654,672,603.00		220,537,798.00			268,084,107.50	175,670.50	66,185,189.00	49,045,880.00			211,082,913.95			45,791,498.00	47,380,585.00	5,027,338.00	3,567,983,582.95	100.0%
Fiscal Year to date 2010	764,457,979.00		80,293,543.00			75,645,849.00	1,521,850.00	19,019,503.00	12,417,086.00			53,509,218.00			12,091,026.00	14,538,032.50	1,414,318.50	1,034,908,405.00	100.0%