



WEEKLY SALES SUMMARY

Unaudited

[Week Ending: 12/19/2015](#)

Texas Lottery Commission
Fiscal Year to Date Sales Comparison
Unaudited

Through the Week Ending 12/19/2015 (16 Weeks)

Sales by Game	FY 2014 *	FY 2015 **	FY 2016	\$ Change		% Change	
				FY 2016 to FY 2014	FY 2016 to FY 2015	FY 2016 to FY 2014	FY 2016 to FY 2015
Scratch Tickets	\$ 964,827,229	\$ 1,001,375,647	\$ 1,034,886,328	\$ 70,059,099	\$ 33,510,681	7.3%	3.3%
Lotto Texas	41,040,872	36,683,257	38,114,188	-2,926,684	1,430,931	-7.1%	3.9%
Lotto Extra	5,259,396	5,537,385	6,442,305	1,182,909	904,920	22.5%	16.3%
Pick 3	77,288,793	76,187,065	76,202,352	-1,086,441	15,287	-1.4%	0.0%
Pick 3 Sum It Up	1,527,371	1,455,804	1,517,148	-10,223	61,345	-0.7%	4.2%
Cash Five	16,199,198	15,167,493	14,050,119	-2,149,079	-1,117,374	-13.3%	-7.4%
Texas Two Step	16,838,523	17,085,704	15,731,905	-1,106,618	-1,353,799	-6.6%	-7.9%
Mega Millions	84,737,405	48,280,968	37,963,436	-46,773,969	-10,317,532	-55.2%	-21.4%
Megaplier	17,022,051	10,975,274	9,507,621	-7,514,430	-1,467,653	-44.1%	-13.4%
Daily 4	25,494,632	25,688,864	26,252,754	758,122	563,890	3.0%	2.2%
Daily 4 Sum It Up	1,570,971	1,539,030	1,353,689	-217,282	-185,341	-13.8%	-12.0%
Powerball	70,123,875	51,342,503	61,266,257	-8,857,618	9,923,754	-12.6%	19.3%
Power Play	8,212,242	6,753,694	8,014,547	-197,695	1,260,853	-2.4%	18.7%
All or Nothing	14,364,002	11,987,134	9,493,154	-4,870,848	-2,493,980	-33.9%	-20.8%
Monopoly	- ¹	2,656,700	-	-	-2,656,700	-	-100.0%
Texas Triple Chance	-	-	8,281,505	8,281,505	8,281,505	-	-
Total	\$ 1,344,506,559	\$ 1,312,716,521	\$ 1,349,077,308	\$ 4,570,749	\$ 36,360,787	0.3%	2.8%

* 2 extra days

** 1 extra day

¹ Monopoly sales were suspended after draw on 12/12/14

Texas Lottery Commission
Fiscal Year to Date Cumulative Average Sales Comparison
Unaudited

Through the Week Ending 12/19/2015 (16 Weeks)

Sales by Game	FY 2014	FY 2015	FY 2016
Scratch Tickets	\$ 8,614,529	\$ 9,021,402	\$ 9,408,058
Lotto Texas	366,436	330,480	346,493
Lotto Extra	46,959	49,886	58,566
Pick 3	690,079	686,370	692,749
Pick 3 Sum It Up	13,637	13,115	13,792
Cash Five	144,636	136,644	127,728
Texas Two Step	150,344	153,925	143,017
Mega Millions	756,584	434,964	345,122
Megaplier	151,983	98,876	86,433
Daily 4	227,631	231,431	238,661
Daily 4 Sum It Up	14,027	13,865	12,306
Powerball	626,106	462,545	556,966
Power Play	73,324	60,844	72,860
All or Nothing	128,250	107,992	86,301
Monopoly	- **	48,304	-
Texas Triple Chance	-	-	* 98,589
Total	\$ <u>12,004,523</u>	\$ <u>11,850,644</u>	\$ <u>12,287,642</u>

thru 12/21/2013
112 days

**

thru 12/20/2014
111 days
55 days

*

thru 12/19/2015
110 days
84 days

Texas Lottery Commission
Fiscal Year Over Year Change in Sales
Unaudited
FY 2016 Compared to FY 2015

			SCRATCH TICKETS				DRAW GAMES				TOTAL SALES			
Week	FY 2016		FY 2015	Difference	% change - Cumulative Sales	FY 2016	FY 2015	Difference	% change - Cumulative Sales	FY 2016	FY 2015	Difference	% change - Cumulative Sales	
	Week	Ending												FY 2016
1	9/5/2015 *		\$49,534,249	\$54,911,801	(\$5,377,552)	-9.8%	\$17,091,724	\$17,482,488	(\$390,765)	-2.2%	\$66,625,973	\$72,394,289	(\$5,768,317)	-8.0%
2	9/12/2015		\$61,566,291	\$61,436,533	\$129,758	0.2%	\$20,630,922	\$19,097,081	\$1,533,841	8.0%	\$82,197,213	\$80,533,614	\$1,663,599	2.1%
3	9/19/2015		\$63,530,657	\$60,959,234	\$2,571,423	4.2%	\$20,327,253	\$20,567,894	(\$240,641)	-1.2%	\$83,857,910	\$81,527,128	\$2,330,782	2.9%
4	9/26/2015		\$61,731,400	\$59,710,056	\$2,021,344	3.4%	\$22,252,290	\$19,920,828	\$2,331,462	11.7%	\$83,983,690	\$79,630,884	\$4,352,806	5.5%
5	10/3/2015		\$67,048,415	\$62,119,854	\$4,928,561	7.9%	\$25,436,791	\$18,531,421	\$6,905,370	37.3%	\$92,485,206	\$80,651,275	\$11,833,931	14.7%
6	10/10/2015		\$66,049,706	\$61,253,665	\$4,796,041	7.8%	\$18,138,977	\$18,985,332	(\$846,355)	-4.5%	\$84,188,683	\$80,238,997	\$3,949,687	4.9%
7	10/17/2015		\$65,073,593	\$60,230,048	\$4,843,545	8.0%	\$17,776,414	\$19,538,402	(\$1,761,988)	-9.0%	\$82,850,007	\$79,768,450	\$3,081,558	3.9%
8	10/24/2015		\$64,087,437	\$62,384,112	\$1,703,325	2.7%	\$18,450,464	\$21,475,643	(\$3,025,179)	-14.1%	\$82,537,901	\$83,859,755	(\$1,321,854)	-1.6%
9	10/31/2015		\$66,025,374	\$63,404,713	\$2,620,661	4.1%	\$19,568,150	\$23,568,817	(\$4,000,668)	-17.0%	\$85,593,524	\$86,973,530	(\$1,380,007)	-1.6%
10	11/7/2015		\$68,137,192	\$65,486,719	\$2,650,473	4.0%	\$20,398,351	\$23,749,032	(\$3,350,681)	-14.1%	\$88,535,543	\$89,235,751	(\$700,208)	-0.8%
11	11/14/2015		\$65,449,428	\$61,745,521	\$3,703,907	6.0%	\$20,169,382	\$17,449,604	\$2,719,779	15.6%	\$85,618,810	\$79,195,125	\$6,423,686	8.1%
12	11/21/2015		\$68,364,421	\$66,353,583	\$2,010,838	3.0%	\$17,174,606	\$17,108,084	\$66,522	0.4%	\$85,539,027	\$83,461,667	\$2,077,360	2.5%
13	11/28/2015		\$61,091,628	\$60,471,184	\$620,444	1.0%	\$17,168,993	\$17,303,129	(\$134,136)	-0.8%	\$78,260,621	\$77,774,313	\$486,309	0.6%
14	12/5/2015		\$67,830,827	\$66,648,696	\$1,182,131	1.8%	\$19,252,418	\$18,862,425	\$389,994	2.1%	\$87,083,245	\$85,511,121	\$1,572,125	1.8%
15	12/12/2015		\$68,324,452	\$65,708,630	\$2,615,822	4.0%	\$19,529,408	\$18,649,598	\$879,811	4.7%	\$87,853,860	\$84,358,228	\$3,495,633	4.1%
16	12/19/2015		\$71,041,258	\$68,551,298	\$2,489,960	3.6%	\$20,824,840	\$19,051,100	\$1,773,740	9.3%	\$91,866,098	\$87,602,398	\$4,263,700	4.9%
17	12/26/2015			\$73,858,618				\$20,006,357				\$93,864,975		
18	1/2/2016			\$67,733,268				\$21,355,167				\$89,088,435		
19	1/9/2016			\$64,745,641				\$22,265,347				\$87,010,988		
20	1/16/2016			\$64,015,166				\$23,694,617				\$87,709,783		
21	1/23/2016			\$62,569,156				\$19,765,442				\$82,334,598		
22	1/30/2016			\$68,001,588				\$22,877,000				\$90,878,588		
23	2/6/2016			\$75,677,650				\$31,662,209				\$107,339,859		
24	2/13/2016			\$75,368,712				\$46,091,747				\$121,460,459		
25	2/20/2016			\$74,833,076				\$19,865,172				\$94,698,248		
26	2/27/2016			\$69,918,013				\$19,735,352				\$89,653,365		
27	3/5/2016			\$74,848,961				\$19,946,068				\$94,795,029		
28	3/12/2016			\$70,079,409				\$20,044,562				\$90,123,971		
29	3/19/2016			\$70,368,686				\$18,480,795				\$88,849,481		
30	3/26/2016			\$70,280,600				\$17,595,205				\$87,875,805		
31	4/2/2016			\$74,369,952				\$18,378,917				\$92,748,869		
32	4/9/2016			\$67,416,817				\$18,594,844				\$86,011,661		
33	4/16/2016			\$68,393,316				\$18,104,632				\$86,497,948		
34	4/23/2016			\$70,078,182				\$17,957,150				\$88,035,332		
35	4/30/2016			\$71,744,718				\$18,961,113				\$90,705,831		
36	5/7/2016			\$73,415,978				\$20,210,341				\$93,626,319		
37	5/14/2016			\$72,152,109				\$20,362,774				\$92,514,883		
38	5/21/2016			\$70,399,950				\$21,246,276				\$91,646,226		
39	5/28/2016			\$68,547,554				\$22,227,946				\$90,775,500		
40	6/4/2016			\$71,254,006				\$20,739,703				\$91,993,709		
41	6/11/2016			\$65,878,375				\$17,216,403				\$83,094,778		
42	6/18/2016			\$66,658,742				\$17,340,531				\$83,999,273		

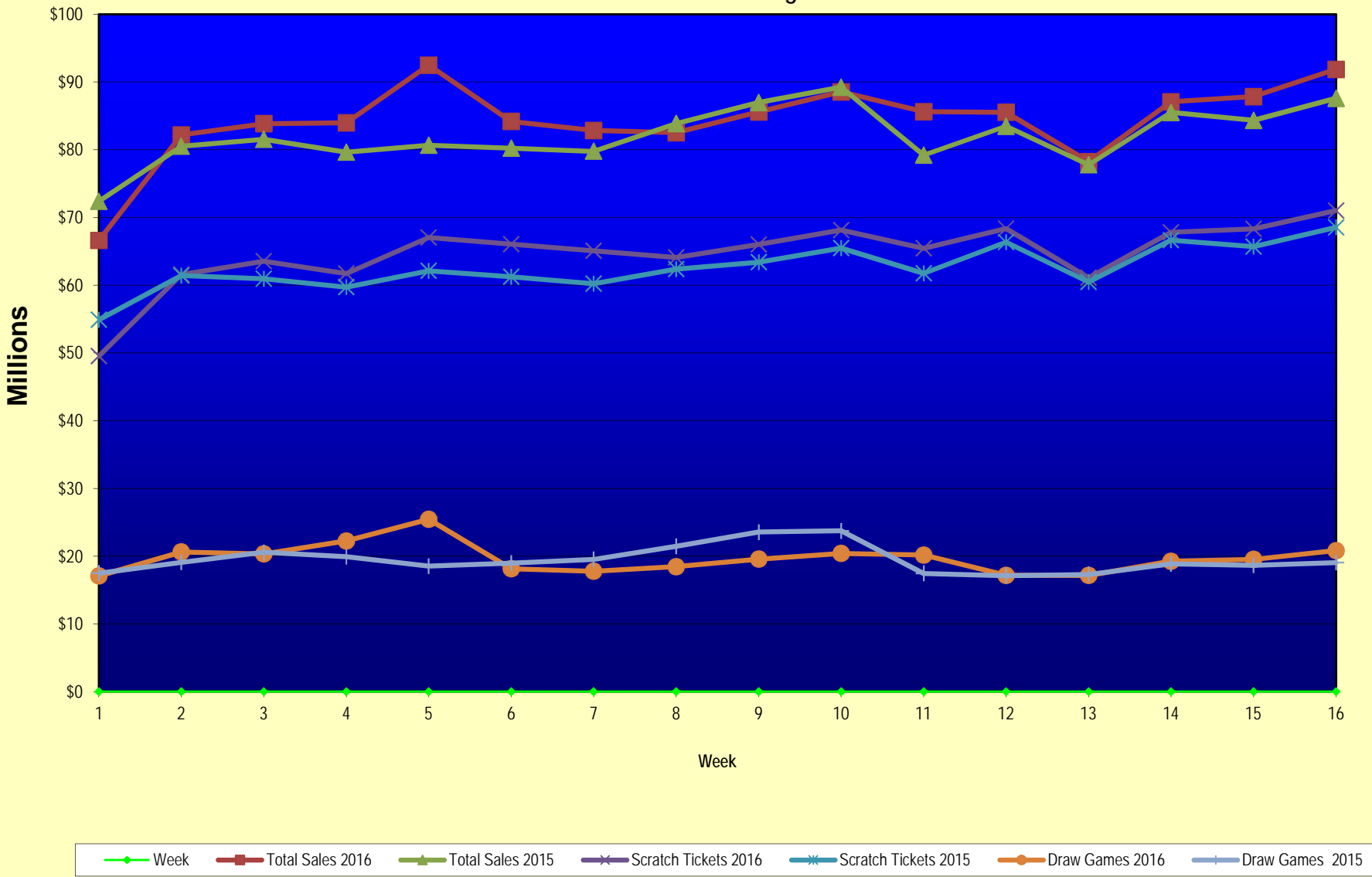
Texas Lottery Commission
Fiscal Year Over Year Change in Sales
Unaudited
FY 2016 Compared to FY 2015

			SCRATCH TICKETS				DRAW GAMES				TOTAL SALES			
FY 2016			FY 2016	FY 2015	Difference	% change - Cumulative Sales	FY 2016	FY 2015	Difference	% change - Cumulative Sales	FY 2016	FY 2015	Difference	% change - Cumulative Sales
Week	Week	Ending												
43	6/25/2016			\$65,282,276				\$16,873,368				\$82,155,644		
44	7/2/2016			\$67,757,752				\$18,007,540				\$85,765,292		
45	7/9/2016			\$64,718,254				\$18,203,985				\$82,922,239		
46	7/16/2016			\$64,957,977				\$18,792,785				\$83,750,762		
47	7/23/2016			\$62,541,241				\$18,229,965				\$80,771,206		
48	7/30/2016			\$66,468,460				\$17,742,489				\$84,210,949		
49	8/6/2016			\$62,412,598				\$17,331,374				\$79,743,972		
50	8/13/2016			\$62,089,389				\$17,501,599				\$79,590,988		
51	8/20/2016			\$62,437,148				\$17,779,458				\$80,216,606		
52	8/27/2016			\$61,403,206				\$18,529,560				\$79,932,766		
	8/31/2016 **			\$17,309,621				\$3,279,958				\$20,589,579		
Total thru Current Week			\$1,034,886,328	\$1,001,375,647	\$33,510,681	3.3%	\$314,190,980	\$311,340,874	\$2,850,106	0.9%	\$1,349,077,308	\$1,312,716,521	\$36,360,787	2.8%
Fiscal Year Total			\$1,034,886,328	\$3,481,361,812			\$314,190,980	\$1,048,338,613			\$1,349,077,308	\$4,529,700,425		

* FY 16 includes 5 days; FY 15 includes 6 days

** FY 16 includes 4 days; FY 15 includes 2 days

Texas Lottery Commission Fiscal Year Over Year Change in Sales



Note: Week 1 is not a full week of sales as this report is prepared on a Fiscal Year basis.

Texas Lottery Commission
Scratch Tickets by Price Point
Sales, Prize Expense, Sales Contribution and Payout Percentage With Year Over Year Changes
Unaudited

Fiscal Year	Price Point	# of Active Games	FY Sales	% of Scratch Ticket Sales	Year over Year Change in Sales	FY Prize Expense	Year over Year Change in Prize Expense	FY Sales Contribution	Year over Year Change in Contribution	Average Prize Payout %	Year over Year Change in Payout %
2015	\$1.00	17	50,543,367	5.0%		30,969,580		19,573,787		61.3%	2.3%
Through	\$2.00	27	104,562,840	10.4%		69,153,939		35,408,901		66.1%	2.0%
12/20/2014	\$3.00	12	98,613,285	9.8%		64,993,895		33,619,390		65.9%	0.4%
	\$5.00	38	319,572,595	31.9%		217,105,748		102,466,847		67.9%	0.0%
	\$10.00	14	197,819,490	19.8%		139,551,949		58,267,541		70.5%	0.3%
	\$20.00	8	184,455,520	18.4%		138,305,875		46,149,645		75.0%	0.1%
	\$50.00	3	45,808,550	4.6%		35,600,659		10,207,891		77.7%	0.1%
Total		119	\$1,001,375,647			\$695,681,644		\$305,694,003		69.5%	0.8%
2016	\$1.00	14	45,915,261	4.4%		27,770,003		18,145,258		60.5%	-0.1%
thru	\$2.00	26	104,583,630	10.1%		68,027,187		36,556,443		65.0%	-0.7%
12/19/2015	\$3.00	9	86,125,977	8.3%		56,676,512		29,449,465		65.8%	-0.2%
	\$5.00	41	333,584,100	32.2%		226,635,892		106,948,208		67.9%	0.0%
	\$10.00	14	206,049,000	19.9%		144,362,576		61,686,424		70.1%	-0.3%
	\$20.00	9	207,421,160	20.0%		155,446,528		51,974,632		74.9%	0.0%
	\$50.00	3	51,207,200	4.9%		39,825,869		11,381,331		77.8%	0.0%
Total		116	\$1,034,886,328			\$718,744,567		\$316,141,761		69.5%	0.0%
Variance	\$1.00	-3	-4,628,106		-9.2%	-3,199,577	-10.3%	-1,428,529	-7.3%	-0.79%	
2016 to	\$2.00	-1	20,790		0.0%	-1,126,752	-1.6%	1,147,542	3.2%	-1.09%	
2015	\$3.00	-3	-12,487,308		-12.7%	-8,317,382	-12.8%	-4,169,926	-12.4%	-0.10%	
	\$5.00	3	14,011,505		4.4%	9,530,144	4.4%	4,481,361	4.4%	0.00%	
	\$10.00	0	8,229,510		4.2%	4,810,626	3.4%	3,418,884	5.9%	-0.48%	
	\$20.00	1	22,965,640		12.5%	17,140,653	12.4%	5,824,987	12.6%	-0.04%	
	\$50.00	0	5,398,650		11.8%	4,225,210	11.9%	1,173,440	11.5%	0.06%	
Total		-3	\$33,510,681		3.3%	\$23,062,923	3.3%	\$10,447,758	3.4%	-0.02%	
Notes - Scratch Ticket Variances											

Texas Lottery Commission
Scratch Tickets by Price Point
Sales, Prize Expense, Sales Contribution and Payout Percentage With Year Over Year Changes
Unaudited

			FY 2016		FY 2015	Difference
Sales	\$1 - \$5		\$570,208,968		\$573,292,087	-\$3,083,119
Prize Exp.	\$1 - \$5		\$379,109,594		\$382,223,162	-\$3,113,567
Sales Cont.	\$1 - \$5		\$191,099,374		\$191,068,925	\$30,448
Prize Exp. %	\$1 - \$5		66.5%		66.7%	-0.2%
			FY 2016		FY 2015	Difference
Sales	\$10 - \$50		\$464,677,360		\$428,083,560	\$36,593,800
Prize Exp.	\$10 - \$50		\$339,634,973		\$313,458,482	\$26,176,490
Sales Cont.	\$10 - \$50		\$125,042,387		\$114,625,078	\$10,417,310
Prize Exp. %	\$10 - \$50		73.1%		73.2%	-0.1%
			FY 2016		FY 2015	Difference
Sales	Scratch		\$1,034,886,328		\$1,001,375,647	\$33,510,681
Prize Exp.	Scratch		\$718,744,567		\$695,681,644	\$23,062,923
Sales Cont.	Scratch		\$316,141,761		\$305,694,003	\$10,447,758
Prize Exp. %	Scratch		69.5%		69.5%	0.0%

			FY 2016		FY 2015	Difference
Sales	\$1 - \$10		\$776,257,968		\$771,111,577	\$5,146,391
Prize Exp.	\$1 - \$10		\$523,472,170		\$521,775,111	\$1,697,059
Sales Cont.	\$1 - \$10		\$252,785,798		\$249,336,466	\$3,449,332
Prize Exp. %	\$1 - \$10		67.4%		67.7%	-0.2%
			FY 2016		FY 2015	Difference
Sales	\$20 - \$50		\$258,628,360		\$230,264,070	\$28,364,290
Prize Exp.	\$20 - \$50		\$195,272,397		\$173,906,533	\$21,365,864
Sales Cont.	\$20 - \$50		\$63,355,963		\$56,357,537	\$6,998,426
Prize Exp. %	\$20 - \$50		75.5%		75.5%	0.0%
			FY 2016		FY 2015	Difference
Sales	Scratch		\$1,034,886,328		\$1,001,375,647	\$33,510,681
Prize Exp.	Scratch		\$718,744,567		\$695,681,644	\$23,062,923
Sales Cont.	Scratch		\$316,141,761		\$305,694,003	\$10,447,758
Prize Exp. %	Scratch		69.5%		69.5%	0.0%

Texas Lottery Commission
Weekly Sales Summary
& Comparison to Previous Week
 Unaudited

	Week Ending 12/19/2015	% of Sales	Week Ending 12/12/2015	% of Sales	\$ change	% change
	<u>THIS WEEK</u>		<u>LAST WEEK</u>			
Total Sales	<u>\$91,866,098</u>		<u>\$87,853,860</u>		<u>\$4,012,238</u>	4.57%
Scratch Tickets	<u>\$71,041,258</u>	77.3%	<u>\$68,324,452</u>	77.8%	<u>\$2,716,806</u>	3.98%
Lotto	\$2,326,771	2.5%	\$2,281,004	2.6%	\$45,767	2.01%
Lotto Extra	\$400,223	0.4%	\$391,281	0.4%	\$8,942	2.29%
Pick 3	\$4,980,685	5.4%	\$4,980,397	5.7%	\$288	0.01%
Pick 3 Sum It Up	\$95,154	0.1%	\$94,549	0.1%	\$605	0.64%
Cash Five	\$879,423	1.0%	\$877,611	1.0%	\$1,812	0.21%
Texas Two Step	\$888,674	1.0%	\$815,777	0.9%	\$72,897	8.94%
Mega Millions	\$2,322,855	2.5%	\$2,160,601	2.5%	\$162,254	7.51%
Megaplier	\$592,792	0.6%	\$555,974	0.6%	\$36,818	6.62%
Daily 4	\$1,796,682	2.0%	\$1,746,314	2.0%	\$50,368	2.88%
Daily 4 Sum It Up	\$92,401	0.1%	\$86,684	0.1%	\$5,718	6.60%
Powerball	\$4,707,013	5.1%	\$3,835,044	4.4%	\$871,969	22.74%
Power Play	\$600,420	0.7%	\$508,111	0.6%	\$92,309	18.17%
All or Nothing	\$573,754	0.6%	\$592,212	0.7%	-\$18,458	-3.12%
Texas Triple Chance	\$567,994	0.6%	\$603,850	0.7%	-\$35,856	-5.94%
Total Draw Game Sales	<u>\$20,824,840</u>		<u>\$19,529,408</u>		<u>\$1,295,432</u>	6.63%

* Totals may not sum due to rounding.

Texas Lottery Commission
Weekly Sales Summary
Unaudited

SCRATCH TICKETS
TOP TEN SELLING GAMES

For the week ending: 12/19/2015

Rank	Price Point	Game	Sales (Millions)
1	\$ 5	SUPER LOTERIA	\$ 5.139
2	\$ 20	HOLIDAY GAME BOOK	\$ 4.197
3	\$ 10	HAPPY HOLIDAYS	\$ 3.886
4	\$ 20	\$1,000,000 INSTANT CASHOUT	\$ 3.159
5	\$ 10	CASHWORD MULTIPLIER	\$ 2.873
6	\$ 50	DIAMOND DOLLARS	\$ 2.871
7	\$ 20	\$500,000,000 CASH	\$ 2.859
8	\$ 5	HOLIDAY TREASURES	\$ 2.574
9	\$ 5	MERRY MONEY	\$ 2.357
10	\$ 3	BONUS CASHWORD	\$ 2.282

Texas Lottery Commission
Prize Payout Tracking Report
Unaudited

Through the week ending: 12/19/2015

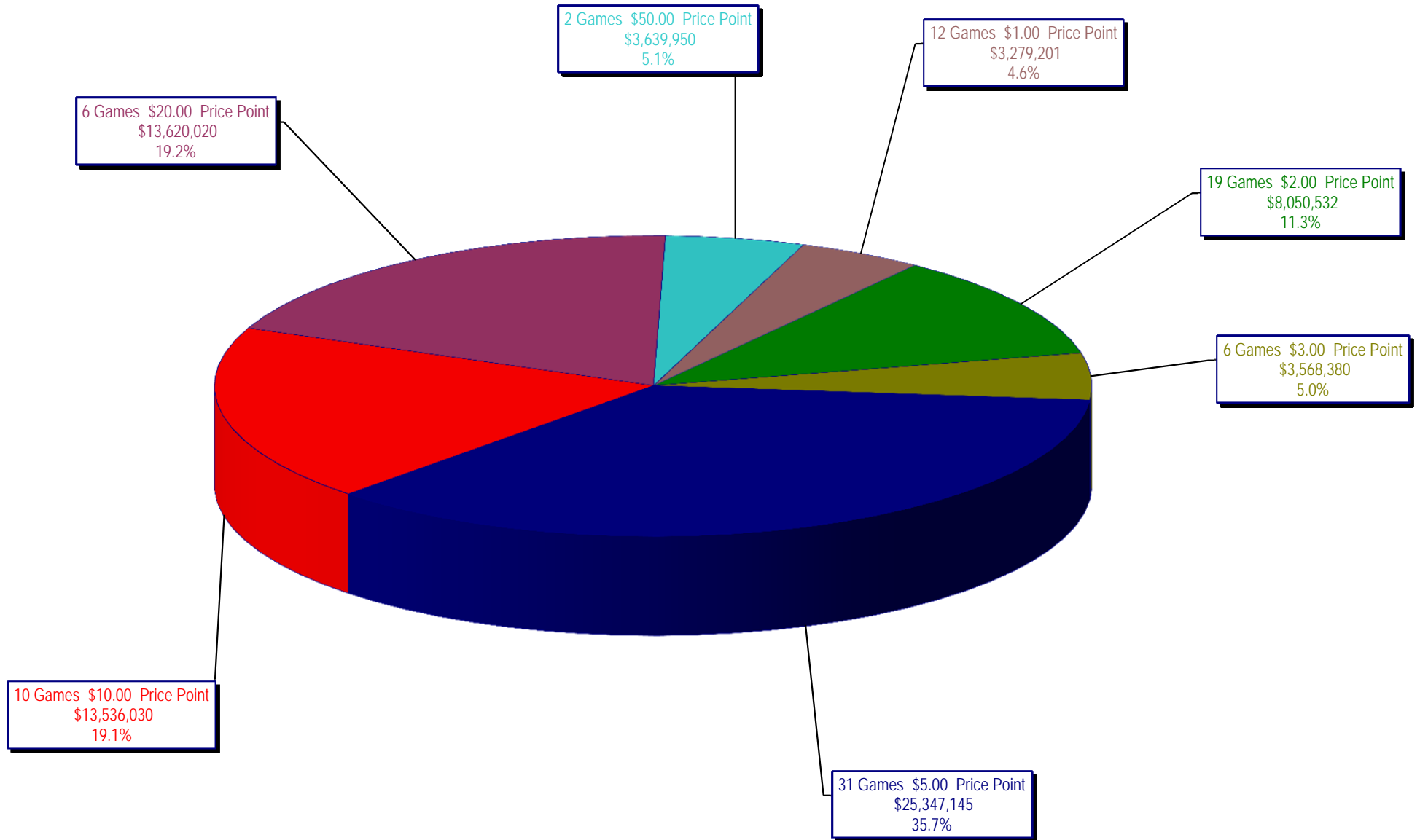
Draw Game Sales

		FY Sales Through Week Ending 12/19/2015		FY Prize Expense Through Week Ending 12/19/2015	Actual* Prize Payout	Base Payout (Prize Pool)
Lotto	\$	38,114,188	\$	25,004,767	65.60%	50.00%
Lotto Extra		6,442,305		3,269,664	50.75%	53.70%
Pick 3		76,202,352		37,468,530	49.17%	50.00%
Pick 3 Sum It Up		1,517,148		743,464	49.00%	50.00%
Cash Five		14,050,119		7,025,137	50.00%	50.00%
Texas Two Step		15,731,905		7,982,451	50.74%	50.00%
Mega Millions		37,963,436		19,514,023	51.40%	50.00%**
Megaplier		9,507,621		4,790,605	50.39%	N/A
Daily 4		26,252,754		12,598,600	47.99%	50.00%
Daily 4 Sum It Up		1,353,689		485,225	35.84%	50.00%
Powerball		61,266,257		30,831,406	50.32%	50.00%**
Power Play		8,014,547		4,033,081	50.32%	N/A
All or Nothing		9,493,154		4,925,520	51.88%	55.98%
Texas Triple Chance		8,281,505		5,066,725	61.18%	54.42%
Totals	\$	314,190,980	\$	163,739,197	52.11%	

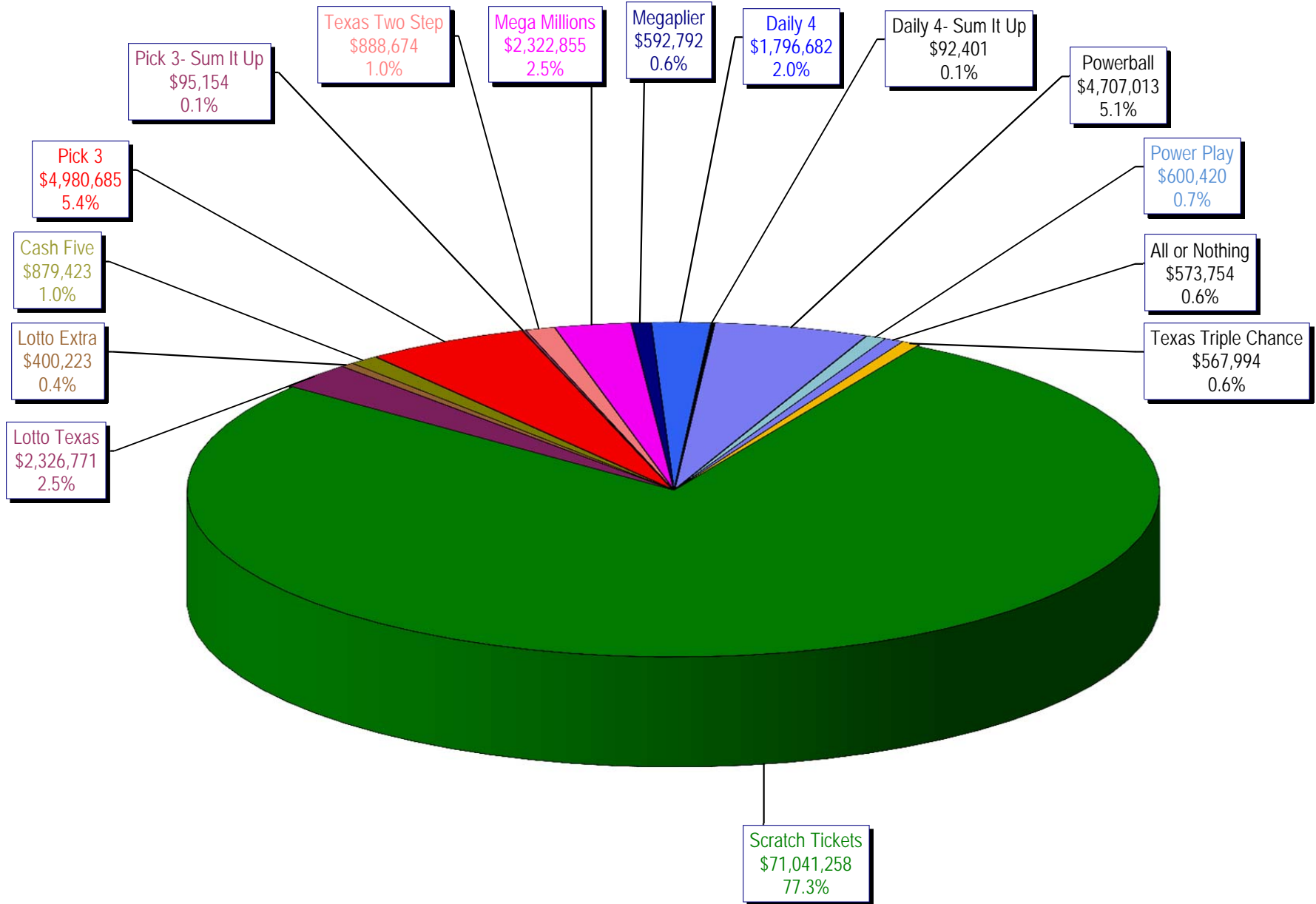
* Before Unclaimed Prizes

** Estimated; depends on # of guaranteed prizes won in Texas

Texas Lottery Commission
Scratch Ticket Sales
For the week ending 12/19/15
(Unaudited)



Texas Lottery Commission
All Game Sales
For the week ending 12/19/15
(Unaudited)



Texas Lottery Commission - Weekly Sales Summary for FY 2016 (Unaudited)

Week Ended	Scratch Tickets	New Games & Dates	Lotto Texas	Jackpot W	S	Lotto Extra	Pick 3	Pick 3 Sum It Up	Cash Five	Texas Two Step	Jackpot M	TH	Mega Millions	Jackpot T	F	Megaplier	Daily 4	Daily 4 Sum It Up	Powerball	Jackpot W	S	Power Play	All or Nothing	Monopoly	Jackpot F	Texas Triple Chance	Total	Per Cap.
9/5/2015*	66,843,870	0	2,788,509	25	26	466,121	5,249,348	117,979	956,126	1,253,100	425	575	2,366,640	74	85	608,901	1,725,027	93,067	3,586,482	120	133	484,769	675,614	0		87,215,551	3.24	
9/12/2015	61,566,291	1717 (\$1.N); 1718 (\$5.N); 1748 (\$10.N); 1696 (\$3.N) - 9/08/15	2,793,426	26.5	27.75	465,451	4,974,238	103,203	919,536	1,423,604	725	950	2,511,039	95	106	629,091	1,641,226	86,539	3,927,126	149	167	518,060	638,384	0		82,197,213	3.05	
9/19/2015	63,530,657	0	2,845,557	28.25	29.5	475,307	4,715,566	95,242	928,275	854,109	200	225	1,817,155	15	20	487,946	1,647,829	81,483	5,082,782	185	208	639,614	656,388	0		83,857,910	3.11	
9/26/2015	61,731,400	1720 (\$2.N); 1721 (\$5.N); 1715 (\$5.N) - 9/21/15	2,815,638	30	30.75	468,584	4,735,629	97,118	924,334	1,048,752	300	450	1,860,438	25	31	499,201	1,628,350	82,200	6,648,092	235	267	790,427	653,528	0		83,983,690	3.12	
10/3/2015	67,048,415	0	3,034,763	31.5	32.25	502,043	4,925,789	100,522	919,217	1,347,552	600	725	2,053,673	39	47	539,290	1,662,320	88,291	8,036,576	301	40	884,785	616,594	0	725,376	92,485,206	3.43	
10/10/2015	66,049,706	1722 (\$1.N); 1723 (\$5.N); 1711 (\$20.N) - 10/05/15	2,175,801	5	5.25	366,506	4,803,855	97,005	899,614	1,141,865	925	200	2,113,720	55	65	535,411	1,636,542	86,150	2,572,748	50	60	372,480	593,616	0		743,664	84,188,683	3.12
10/17/2015	65,073,593	0	2,133,286	5	5	358,076	4,629,752	92,453	876,040	824,622	200	225	2,286,703	75	84	568,477	1,576,323	79,576	2,638,956	70	80	377,157	580,870	0		754,124	82,850,007	3.07
10/24/2015	64,087,437	1724 (\$2.N); 1768 (\$5.N); 1726 (\$10.N) - 10/19/15	2,099,176	5.25	5.5	358,217	4,515,381	92,071	860,960	991,931	300	425	2,600,946	93	105	626,019	1,553,788	80,225	2,946,077	90	100	411,192	562,378	0		752,104	82,537,901	3.06
10/31/2015	66,025,374	0	2,165,101	5.75	6	368,559	4,653,961	91,360	873,751	944,275	550	200	2,945,749	117	129	695,705	1,621,009	85,560	3,327,954	110	127	455,266	573,258	0		766,642	85,593,524	3.18
11/7/2015	68,137,192	1727 (\$1.N); 1728 (\$2.N); 1729 (\$5.N) - 11/02/15	2,232,267	6.25	6.5	379,508	4,977,693	96,887	891,111	911,796	225	300	3,416,380	144	164	795,028	1,688,298	86,418	3,071,581	142	40	425,312	599,980	0		826,093	88,535,543	3.28
11/14/2015	65,449,428	0	2,185,621	6.75	7	373,102	4,726,211	93,030	870,215	1,087,101	425	575	4,139,462	180	200	938,757	1,614,727	82,536	2,437,413	50	60	357,760	574,596	0		688,852	85,618,810	3.18
11/21/2015	68,364,421	1730 (\$2.N); 1783 (\$2.N); 1731 (\$5.N) - 11/16/15 1778 (\$2.N) - 11/18/15	2,173,857	7.25	7.5	369,519	4,674,293	88,988	862,630	825,054	200	225	1,830,909	15	20	489,485	1,632,096	82,077	2,553,907	70	80	370,594	586,348	0		634,850	85,539,027	3.17
11/28/2015	61,091,628	0	2,113,171	7.75	8.25	364,947	4,523,108	87,438	825,047	904,825	300	400	1,785,419	25	31	478,828	1,591,416	82,363	2,886,666	90	100	406,251	546,614	0		572,902	78,260,621	2.90
12/5/2015	67,830,827	1733 (\$5.N) - 12/5/15	2,245,481	8.75	9.5	385,346	5,020,926	94,445	898,598	957,116	525	200	2,073,099	39	47	545,451	1,789,318	94,198	3,432,248	110	127	467,917	603,222	0		645,054	87,083,245	3.23
12/12/2015	68,324,452	1751 (\$1.N); 1780 (\$2.N); 1784 (\$5.N) - 12/07/15	2,281,004	10.25	10.75	391,281	4,980,397	94,549	877,611	815,777	225	200	2,160,601	57	66	555,974	1,746,314	86,684	3,835,044	145	164	508,111	592,212	0		603,850	87,853,860	3.26
12/19/2015	71,041,258	0	2,326,771	11.5	12.25	400,223	4,980,685	95,154	879,423	888,674	225	300	2,322,855	74	85	592,792	1,796,682	92,401	4,707,013	180	202	600,420	573,754	0		567,994	91,866,098	3.41
weekly change	4.0%		2.0%			2.3%	0.0%	0.6%	0.2%	8.9%		7.5%			6.6%	2.9%	6.6%	22.7%		18.2%		-3.1%	0.0%		-5.9%	4.6%		
	SALES		SALES			SALES	SALES	SALES	SALES	SALES	SALES	SALES	SALES	SALES	SALES	SALES	SALES	SALES	SALES	SALES	SALES	SALES	SALES	SALES	SALES	SALES	SALES	% of Sales
Calendar Year to date	3,402,926,065		120,769,807			19,905,170	244,383,025	5,124,403	47,661,452	52,653,437		132,674,670			32,563,039	84,654,385	4,630,762	205,941,066		26,354,885	34,208,432		(390)			8,281,505	4,422,731,713	100.0%
Fiscal Year to date 2016	1,034,886,328		38,114,188			6,442,305	76,202,352	1,517,148	14,050,119	15,731,905		37,963,436			9,507,621	26,252,754	1,353,689	61,266,257		8,014,547	9,493,154		0			8,281,505	1,349,077,308	100.0%
*Full week includes 2 days from FY15																												