



WEEKLY SALES SUMMARY

Unaudited

[Week Ending: 12/23/2017](#)

Texas Lottery Commission
Fiscal Year to Date Sales Comparison
Unaudited

Through the Week Ending 12/23/2017 (17 Weeks)

Sales by Game	FY 2016 *	FY 2017 **	FY 2018	\$ Change		% Change	
				FY 2018 to FY 2016	FY 2018 to FY 2017	FY 2018 to FY 2016	FY 2018 to FY 2017
Scratch Tickets	\$ 1,113,012,293	\$ 1,161,294,370	\$ 1,278,279,068	\$ 165,266,775	\$ 116,984,698	14.8%	10.1%
Lotto Texas	40,536,473	34,767,105	35,773,176	-4,763,297	1,006,071	-11.8%	2.9%
Lotto Extra	6,859,308	6,657,644	7,663,332	804,024	1,005,688	11.7%	15.1%
Pick 3	81,065,757	77,447,692	78,017,414	-3,048,343	569,723	-3.8%	0.7%
Pick 3 Sum It Up	1,608,670	1,470,185	1,525,284	-83,386	55,099	-5.2%	3.7%
Cash Five	14,910,480	13,839,628	13,289,222	-1,621,259	-550,407	-10.9%	-4.0%
Texas Two Step	16,838,424	17,678,355	15,006,797	-1,831,627	-2,671,558	-10.9%	-15.1%
Mega Millions	40,588,311	32,529,813	44,364,671	3,776,360	11,834,858	9.3%	36.4%
Megaplier	10,144,778	8,960,816	8,953,827	-1,190,951	-6,989	-11.7%	-0.1%
MM Just the Jackpot	-	-	482,394	482,394	482,394	-	-
Daily 4	27,978,199	29,007,681	33,635,276	5,657,078	4,627,596	20.2%	16.0%
Daily 4 Sum It Up	1,440,835	1,520,931	1,820,552	379,718	299,622	26.4%	19.7%
Powerball	67,207,895	71,517,289	67,368,141	160,246	-4,149,148	0.2%	-5.8%
Power Play	8,743,267	10,029,895	10,378,861	1,635,594	348,966	18.7%	3.5%
All or Nothing	10,042,132	9,158,992	9,088,526	-953,606	-70,466	-9.5%	-0.8%
Texas Triple Chance	8,812,869	5,018,298	3,989,270	-4,823,599	-1,029,028	-54.7%	-20.5%
Total	\$ 1,449,789,690	\$ 1,480,898,693	\$ 1,609,635,810	\$ 159,846,121	\$ 128,737,118	11.0%	8.7%

* 3 extra days

** 1 extra day

Texas Lottery Commission
Fiscal Year to Date Cumulative Average Sales Comparison
Unaudited

Through the Week Ending 12/23/2017 (17 Weeks)

Sales by Game	FY 2016	FY 2017	FY 2018
Scratch Tickets	\$ 9,512,926	\$ 10,098,212	\$ 11,212,974
Lotto Texas	346,466	302,323	313,800
Lotto Extra	58,627	57,893	67,222
Pick 3	692,870	673,458	684,363
Pick 3 Sum It Up	13,749	12,784	13,380
Cash Five	127,440	120,345	116,572
Texas Two Step	143,918	153,725	131,639
Mega Millions	346,909	282,868	389,164
Megaplier	86,708	77,920	78,542
MM Just the Jackpot	-	- **	8,463
Daily 4	239,130	252,241	295,046
Daily 4 Sum It Up	12,315	13,225	15,970
Powerball	574,426	621,889	590,949
Power Play	74,729	87,216	91,043
All or Nothing	85,830	79,643	79,724
Texas Triple Chance *	96,845	43,637	34,994
Total	\$ 12,412,886	\$ 12,877,380	\$ 14,123,844

	thru 12/26/2015	thru 12/24/2016	thru 12/23/2017
	117 days	115 days	114 days
*	91 days		57 days
		**	

Texas Lottery Commission
Fiscal Year Over Year Change in Sales
Unaudited
FY 2018 Compared to FY 2017

			SCRATCH TICKETS				DRAW GAMES				TOTAL SALES			
FY 2018			FY 2018	FY 2017	Difference	% change - Cumulative Sales	FY 2018	FY 2017	Difference	% change - Cumulative Sales	FY 2018	FY 2017	Difference	% change - Cumulative Sales
Week	Week Ending													
1	9/2/2017 *		\$23,058,926	\$32,980,266	(\$9,921,340)	-30.1%	\$6,902,847	\$10,218,656	(\$3,315,809)	-32.4%	\$29,961,773	\$43,198,922	(\$13,237,149)	-30.6%
2	9/9/2017		\$71,784,232	\$65,952,418	\$5,831,814	8.8%	\$18,779,001	\$19,635,377	(\$856,376)	-4.4%	\$90,563,233	\$85,587,795	\$4,975,438	5.8%
3	9/16/2017		\$72,828,393	\$66,196,270	\$6,632,123	10.0%	\$19,679,292	\$20,915,290	(\$1,235,999)	-5.9%	\$92,507,685	\$87,111,560	\$5,396,125	6.2%
4	9/23/2017		\$71,147,147	\$64,383,005	\$6,764,142	10.5%	\$18,601,742	\$17,451,165	\$1,150,577	6.6%	\$89,748,889	\$81,834,170	\$7,914,719	9.7%
5	9/30/2017		\$74,749,619	\$67,349,951	\$7,399,668	11.0%	\$18,436,682	\$17,519,852	\$916,830	5.2%	\$93,186,301	\$84,869,803	\$8,316,498	9.8%
6	10/7/2017		\$78,134,381	\$71,598,690	\$6,535,691	9.1%	\$19,297,281	\$18,211,107	\$1,086,174	6.0%	\$97,431,662	\$89,809,797	\$7,621,865	8.5%
7	10/14/2017		\$74,084,207	\$69,444,762	\$4,639,445	6.7%	\$19,185,335	\$18,075,261	\$1,110,074	6.1%	\$93,269,542	\$87,520,023	\$5,749,519	6.6%
8	10/21/2017		\$77,631,892	\$69,317,066	\$8,314,826	12.0%	\$19,573,636	\$18,422,336	\$1,151,300	6.2%	\$97,205,528	\$87,739,402	\$9,466,126	10.8%
9	10/28/2017		\$76,385,130	\$69,729,599	\$6,655,531	9.5%	\$18,788,634	\$18,535,248	\$253,386	1.4%	\$95,173,764	\$88,264,847	\$6,908,917	7.8%
10	11/4/2017		\$78,814,323	\$73,451,702	\$5,362,621	7.3%	\$19,564,629	\$20,151,939	(\$587,310)	-2.9%	\$98,378,952	\$93,603,641	\$4,775,312	5.1%
11	11/11/2017		\$78,572,697	\$70,998,320	\$7,574,377	10.7%	\$19,317,440	\$19,925,460	(\$608,020)	-3.1%	\$97,890,137	\$90,923,780	\$6,966,358	7.7%
12	11/18/2017		\$81,674,704	\$75,265,196	\$6,409,508	8.5%	\$19,938,001	\$21,424,637	(\$1,486,636)	-6.9%	\$101,612,705	\$96,689,833	\$4,922,872	5.1%
13	11/25/2017		\$84,916,870	\$68,983,157	\$15,933,713	23.1%	\$19,968,524	\$24,223,331	(\$4,254,808)	-17.6%	\$104,885,393	\$93,206,488	\$11,678,905	12.5%
14	12/2/2017		\$81,453,005	\$72,688,514	\$8,764,491	12.1%	\$21,685,175	\$17,653,328	\$4,031,847	22.8%	\$103,138,180	\$90,341,842	\$12,796,338	14.2%
15	12/9/2017		\$81,251,421	\$71,676,549	\$9,574,872	13.4%	\$21,277,106	\$18,150,590	\$3,126,516	17.2%	\$102,528,526	\$89,827,139	\$12,701,388	14.1%
16	12/16/2017		\$83,850,250	\$73,909,726	\$9,940,524	13.4%	\$23,199,797	\$19,814,333	\$3,385,464	17.1%	\$107,050,047	\$93,724,059	\$13,325,988	14.2%
17	12/23/2017		\$87,941,872	\$77,369,179	\$10,572,693	13.7%	\$27,161,624	\$19,276,415	\$7,885,209	40.9%	\$115,103,496	\$96,645,594	\$18,457,902	19.1%
18	12/30/2017			\$80,868,854				\$19,289,161				\$100,158,015		
19	1/6/2018			\$73,328,624				\$18,611,644				\$91,940,268		
20	1/13/2018			\$73,471,643				\$20,351,397				\$93,823,040		
21	1/20/2018			\$72,229,342				\$20,349,310				\$92,578,652		
22	1/27/2018			\$72,056,793				\$21,668,657				\$93,725,450		
23	2/3/2018			\$77,292,806				\$22,161,789				\$99,454,595		
24	2/10/2018			\$78,699,192				\$22,100,245				\$100,799,437		
25	2/17/2018			\$77,864,124				\$24,776,465				\$102,640,589		
26	2/24/2018			\$80,287,015				\$28,133,116				\$108,420,131		
27	3/3/2018			\$87,500,184				\$20,213,859				\$107,714,043		
28	3/10/2018			\$84,966,053				\$21,024,757				\$105,990,810		
29	3/17/2018			\$82,972,977				\$20,434,291				\$103,407,268		
30	3/24/2018			\$82,217,628				\$20,282,992				\$102,500,620		
31	3/31/2018			\$86,271,920				\$19,497,142				\$105,769,062		
32	4/7/2018			\$81,499,404				\$17,854,294				\$99,353,698		
33	4/14/2018			\$81,831,134				\$17,865,636				\$99,696,770		
34	4/21/2018			\$80,531,863				\$18,337,257				\$98,869,120		
35	4/28/2018			\$81,433,819				\$18,956,981				\$100,390,800		
36	5/5/2018			\$84,857,262				\$19,489,624				\$104,346,886		
37	5/12/2018			\$81,090,824				\$19,420,237				\$100,511,061		
38	5/19/2018			\$80,557,866				\$20,939,291				\$101,497,157		
39	5/26/2018			\$78,141,293				\$21,072,651				\$99,213,944		
40	6/2/2018			\$78,991,820				\$23,569,252				\$102,561,072		
41	6/9/2018			\$77,859,970				\$29,337,930				\$107,197,900		
42	6/16/2018			\$75,964,093				\$18,618,777				\$94,582,870		

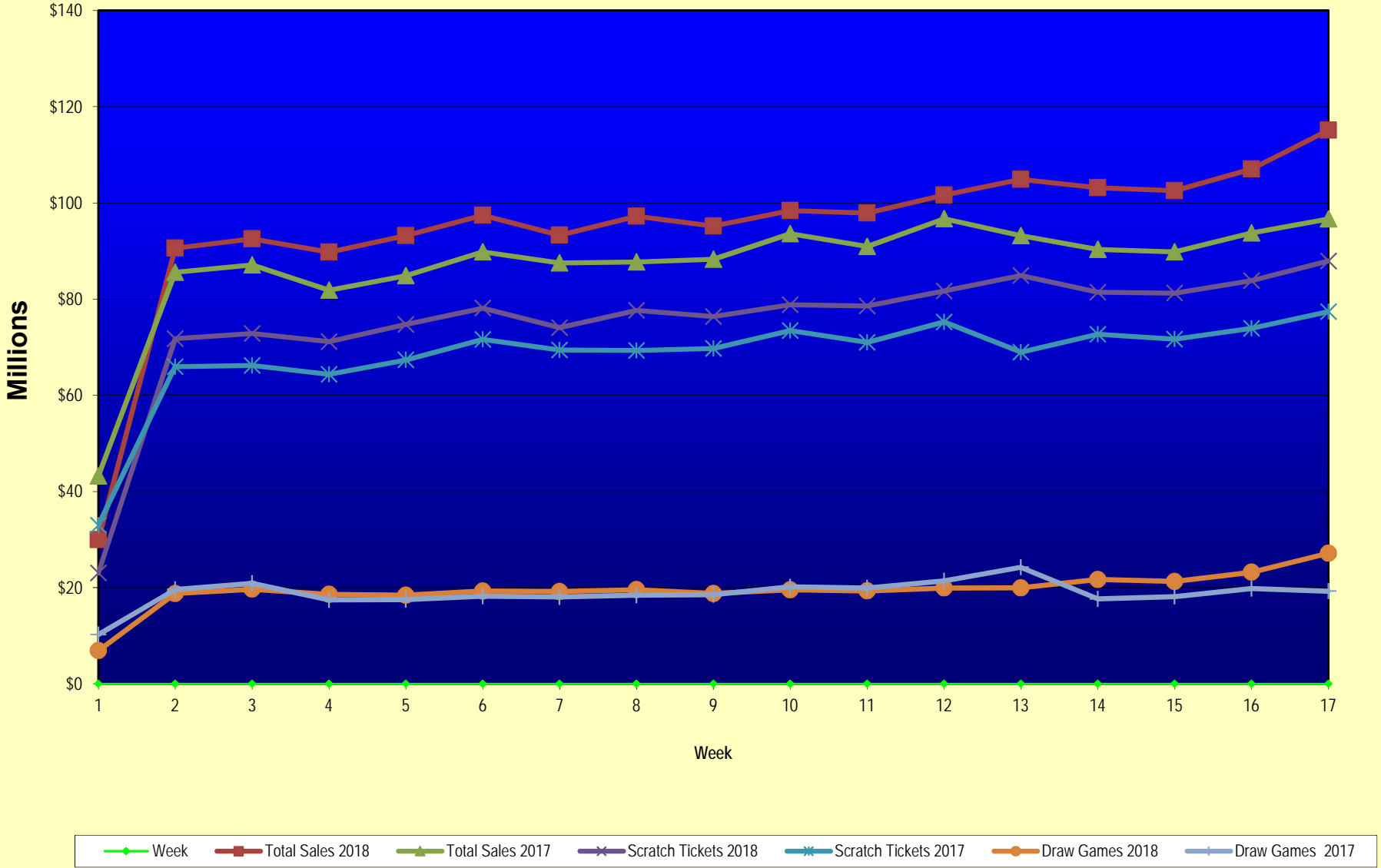
Texas Lottery Commission
Fiscal Year Over Year Change in Sales
Unaudited
FY 2018 Compared to FY 2017

			SCRATCH TICKETS				DRAW GAMES				TOTAL SALES			
FY 2018			FY 2018	FY 2017	Difference	% change - Cumulative Sales	FY 2018	FY 2017	Difference	% change - Cumulative Sales	FY 2018	FY 2017	Difference	% change - Cumulative Sales
Week	Week Ending													
43	6/23/2018			\$75,379,863				\$18,464,310				\$93,844,173		
44	6/30/2018			\$76,450,854				\$19,685,004				\$96,135,858		
45	7/7/2018			\$75,420,516				\$20,817,697				\$96,238,213		
46	7/14/2018			\$74,068,426				\$21,553,240				\$95,621,666		
47	7/21/2018			\$75,926,884				\$21,909,933				\$97,836,817		
48	7/28/2018			\$68,526,927				\$22,791,762				\$91,318,689		
49	8/4/2018			\$74,104,794				\$27,396,555				\$101,501,349		
50	8/11/2018			\$73,356,820				\$37,340,879				\$110,697,699		
51	8/18/2018			\$74,114,510				\$42,787,014				\$116,901,524		
52	8/25/2018			\$70,061,982				\$55,854,516				\$125,916,498		
	8/31/2018 **			\$43,727,573				\$9,679,652				\$53,407,225		
Total thru Current Week			\$1,278,279,068	\$1,161,294,370	\$116,984,698	10.1%	\$331,356,743	\$319,604,323	\$11,752,420	3.7%	\$1,609,635,810	\$1,480,898,693	\$128,737,118	8.7%
Fiscal Year Total			\$1,278,279,068	\$3,935,220,022			\$331,356,743	\$1,142,241,630			\$1,609,635,810	\$5,077,461,652		

* FY 18 includes 2 days; FY 17 includes 3 days

** FY 18 includes 6 days; FY 17 includes 5 days

Texas Lottery Commission Fiscal Year Over Year Change in Sales



Note: Week 1 is not a full week of sales as this report is prepared on a Fiscal Year basis.

Texas Lottery Commission
Scratch Tickets by Price Point
Sales, Prize Expense, Sales Contribution and Payout Percentage With Year Over Year Changes
Unaudited

Fiscal Year	Price Point	# of Active Games	FY Sales	% of Scratch Ticket Sales	Year over Year Change in Sales	FY Prize Expense	Year over Year Change in Prize Expense	FY Sales Contribution	Year over Year Change in Contribution	Average Prize Payout %	Year over Year Change in Payout %
2017	\$1.00	17	46,428,998	4.0%		28,065,739		18,363,259		60.4%	0.4%
Through	\$2.00	23	97,208,484	8.4%		63,328,664		33,879,820		65.1%	0.0%
12/24/2016	\$3.00	8	80,121,858	6.9%		52,814,922		27,306,936		65.9%	0.0%
	\$5.00	41	366,982,580	31.6%		249,348,761		117,633,819		67.9%	0.0%
	\$10.00	16	243,735,350	21.0%		171,963,479		71,771,871		70.6%	0.6%
	\$20.00	11	267,389,700	23.0%		200,359,949		67,029,751		74.9%	0.0%
	\$50.00	4	59,427,400	5.1%		46,242,293		13,185,107		77.8%	0.0%
Total		120	\$1,161,294,370			\$812,123,808		\$349,170,562		69.9%	0.5%
2018	\$1.00	17	47,447,380	3.7%		28,688,262		18,759,118		60.5%	0.4%
Through	\$2.00	18	88,805,954	6.9%		57,783,331		31,022,623		65.1%	-0.1%
12/23/2017	\$3.00	10	91,170,255	7.1%		60,143,809		31,026,446		66.0%	0.1%
	\$5.00	46	363,288,709	28.4%		246,990,936		116,297,773		68.0%	0.0%
	\$10.00	16	313,048,680	24.5%		219,315,378		93,733,302		70.1%	-0.3%
	\$20.00	14	275,111,840	21.5%		206,203,050		68,908,790		75.0%	0.0%
	\$50.00	4	99,406,250	7.8%		77,504,265		21,901,985		78.0%	0.1%
Total		125	\$1,278,279,068			\$896,629,030		\$381,650,038		70.1%	0.4%
Variance	\$1.00	0	1,018,382		2.2%	622,523	2.2%	395,859	2.2%	0.01%	
2018 to	\$2.00	-5	-8,402,530		-8.6%	-5,545,334	-8.8%	-2,857,196	-8.4%	-0.08%	
2017	\$3.00	2	11,048,397		13.8%	7,328,887	13.9%	3,719,510	13.6%	0.05%	
	\$5.00	5	-3,693,871		-1.0%	-2,357,825	-0.9%	-1,336,046	-1.1%	0.04%	
	\$10.00	0	69,313,330		28.4%	47,351,899	27.5%	21,961,431	30.6%	-0.50%	
	\$20.00	3	7,722,140		2.9%	5,843,101	2.9%	1,879,039	2.8%	0.02%	
	\$50.00	0	39,978,850		67.3%	31,261,971	67.6%	8,716,879	66.1%	0.15%	
Total		5	\$116,984,698		10.1%	\$84,505,222	10.4%	\$32,479,476	9.3%	0.21%	

Notes - Scratch Ticket Variances

Texas Lottery Commission
Scratch Tickets by Price Point
Sales, Prize Expense, Sales Contribution and Payout Percentage With Year Over Year Changes
Unaudited

		FY 2018		FY 2017		Difference
Sales	\$1 - \$5	\$590,712,298		\$590,741,920		-\$29,622
Prize Exp.	\$1 - \$5	\$393,606,338		\$393,558,086		\$48,251
Sales Cont.	\$1 - \$5	\$197,105,960		\$197,183,834		-\$77,874
Prize Exp. %	\$1 - \$5	66.6%		66.6%		0.0%
		FY 2018		FY 2017		Difference
Sales	\$10 - \$50	\$687,566,770		\$570,552,450		\$117,014,320
Prize Exp.	\$10 - \$50	\$503,022,692		\$418,565,721		\$84,456,971
Sales Cont.	\$10 - \$50	\$184,544,078		\$151,986,729		\$32,557,349
Prize Exp. %	\$10 - \$50	73.2%		73.4%		-0.2%
		FY 2018		FY 2017		Difference
Sales	Scratch	\$1,278,279,068		\$1,161,294,370		\$116,984,698
Prize Exp.	Scratch	\$896,629,030		\$812,123,808		\$84,505,222
Sales Cont.	Scratch	\$381,650,038		\$349,170,562		\$32,479,476
Prize Exp. %	Scratch	70.1%		69.9%		0.2%

		FY 2018		FY 2017		Difference
Sales	\$1 - \$10	\$903,760,978		\$834,477,270		\$69,283,708
Prize Exp.	\$1 - \$10	\$612,921,715		\$565,521,565		\$47,400,150
Sales Cont.	\$1 - \$10	\$290,839,262		\$268,955,705		\$21,883,558
Prize Exp. %	\$1 - \$10	67.8%		67.8%		0.0%
		FY 2018		FY 2017		Difference
Sales	\$20 - \$50	\$374,518,090		\$326,817,100		\$47,700,990
Prize Exp.	\$20 - \$50	\$283,707,315		\$246,602,242		\$37,105,072
Sales Cont.	\$20 - \$50	\$90,810,775		\$80,214,858		\$10,595,918
Prize Exp. %	\$20 - \$50	75.8%		75.5%		0.3%
		FY 2018		FY 2017		Difference
Sales	Scratch	\$1,278,279,068		\$1,161,294,370		\$116,984,698
Prize Exp.	Scratch	\$896,629,030		\$812,123,808		\$84,505,222
Sales Cont.	Scratch	\$381,650,038		\$349,170,562		\$32,479,476
Prize Exp. %	Scratch	70.1%		69.9%		0.2%

Texas Lottery Commission
Weekly Sales Summary
& Comparison to Previous Week
 Unaudited

	Week Ending 12/23/2017	% of Sales	Week Ending 12/16/2017	% of Sales	\$ change	% change
	<u>THIS WEEK</u>		<u>LAST WEEK</u>			
Total Sales	<u>\$115,103,496</u>		<u>\$107,050,047</u>		<u>\$8,053,449</u>	7.52%
Scratch Tickets	<u>\$87,941,872</u>	76.4%	<u>\$83,850,250</u>	78.3%	<u>\$4,091,622</u>	4.88%
Lotto	\$2,124,516	1.8%	\$1,956,432	1.8%	\$168,084	8.59%
Lotto Extra	\$469,230	0.4%	\$429,971	0.4%	\$39,259	9.13%
Pick 3	\$4,942,394	4.3%	\$4,788,793	4.5%	\$153,601	3.21%
Pick 3 Sum It Up	\$97,078	0.1%	\$92,152	0.1%	\$4,926	5.35%
Cash Five	\$837,255	0.7%	\$818,587	0.8%	\$18,668	2.28%
Texas Two Step	\$918,506	0.8%	\$899,138	0.8%	\$19,368	2.15%
Mega Millions	\$5,341,776	4.6%	\$4,204,546	3.9%	\$1,137,230	27.05%
Megaplier	\$751,656	0.7%	\$610,115	0.6%	\$141,541	23.20%
MM Just the Jackpot	\$48,156	0.0%	\$45,642	0.0%	\$2,514	5.51%
Daily 4	\$2,180,958	1.9%	\$2,099,981	2.0%	\$80,977	3.86%
Daily 4 Sum It Up	\$120,594	0.1%	\$116,295	0.1%	\$4,300	3.70%
Powerball	\$7,471,900	6.5%	\$5,539,284	5.2%	\$1,932,616	34.89%
Power Play	\$1,054,970	0.9%	\$809,986	0.8%	\$244,984	30.25%
All or Nothing	\$557,540	0.5%	\$551,440	0.5%	\$6,100	1.11%
Texas Triple Chance	\$245,096	0.2%	\$237,436	0.2%	\$7,660	3.23%
Total Draw Game Sales	<u>\$27,161,624</u>		<u>\$23,199,797</u>		<u>\$3,961,827</u>	17.08%

* Totals may not sum due to rounding.

Texas Lottery Commission
Weekly Sales Summary
Unaudited

SCRATCH TICKETS
TOP TEN SELLING GAMES

For the week ending: 12/23/2017

Rank	Price Point	Game	Sales (Millions)
1	\$ 20	MEGA 7'S	\$ 6.271
2	\$ 10	\$50 OR \$100!	\$ 4.622
3	\$ 10	MEGA LOTERIA	\$ 4.328
4	\$ 50	TEXAS LOTTERY PLATINUM	\$ 3.863
5	\$ 5	\$500 FRENZY	\$ 3.365
6	\$ 5	SUPER LOTERIA	\$ 3.326
7	\$ 5	LUCKY 7'S	\$ 3.068
8	\$ 20	TEXAS LOTTERY GOLD	\$ 2.724
9	\$ 20	ULTIMATE CROSSWORD/ULTIMATE BINGO	\$ 2.620
10	\$ 10	TEXAS LOTTERY BLACK	\$ 2.558

Texas Lottery Commission
Prize Payout Tracking Report
Unaudited

Through the week ending: 12/23/2017

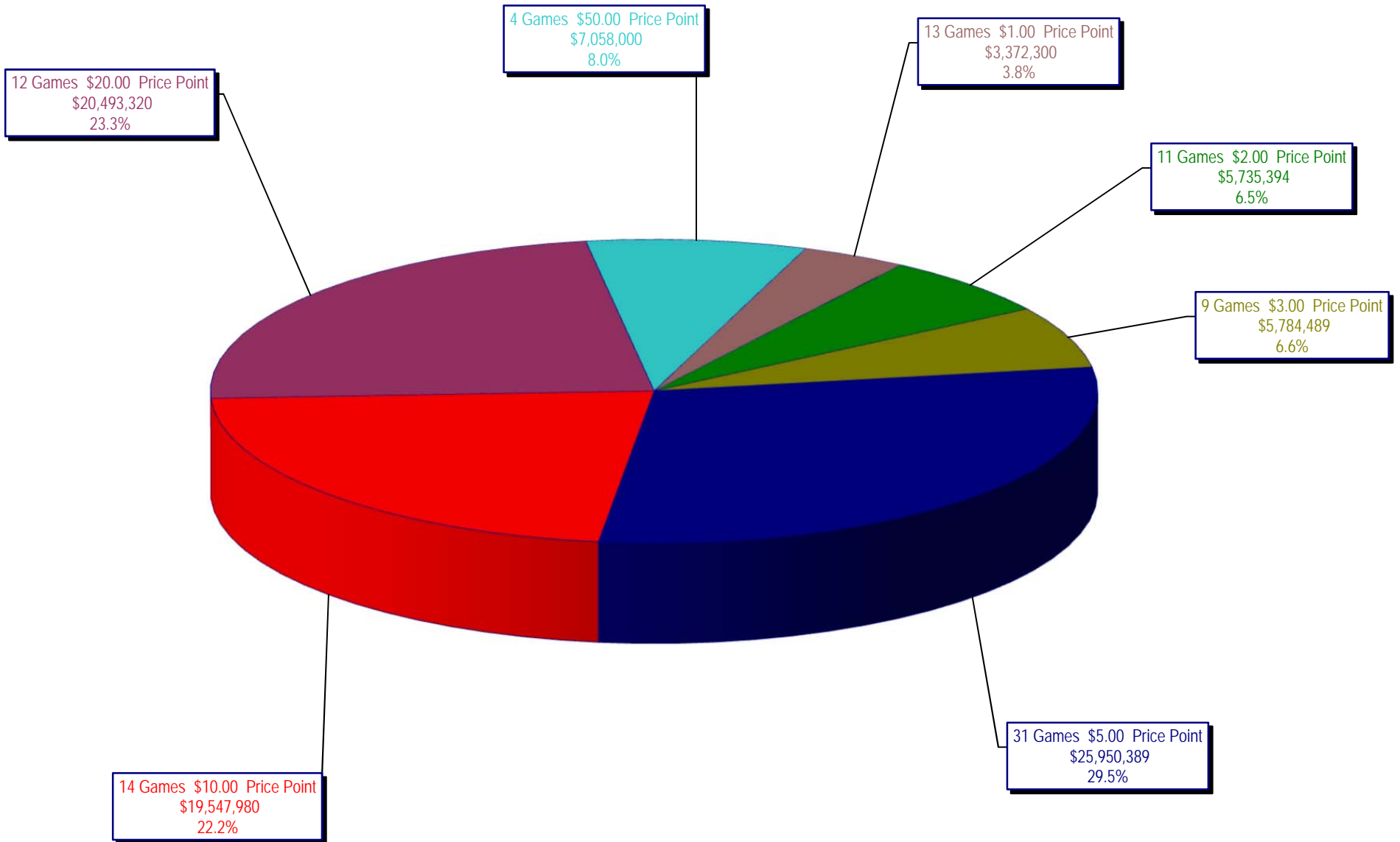
Draw Game Sales

	FY Sales Through Week Ending 12/23/2017	FY Prize Expense Through Week Ending 12/23/2017	Actual* Prize Payout	Base Payout (Prize Pool)
Lotto	\$ 35,773,176	\$ 23,484,967	65.65%	50.00%
Lotto Extra	7,663,332	4,375,454	57.10%	53.70%
Pick 3	78,017,414	35,910,440	46.03%	50.00%
Pick 3 Sum It Up	1,525,284	673,651	44.17%	50.00%
Cash Five	13,289,222	6,644,617	50.00%	50.00%
Texas Two Step	15,006,797	7,524,276	50.14%	50.00%
Mega Millions	44,364,671	23,134,368	52.15%	50.00%**
Megaplier	8,953,827	4,621,316	51.61%	N/A
MM Just the Jackpot	482,394	235,500	48.82%	50.00%**
Daily 4	33,635,276	21,084,650	62.69%	50.00%
Daily 4 Sum It Up	1,820,552	727,576	39.96%	50.00%
Powerball	67,368,141	33,821,064	50.20%	50.00%**
Power Play	10,378,861	5,213,901	50.24%	N/A
All or Nothing	9,088,526	5,463,154	60.11%	55.98%
Texas Triple Chance	3,989,270	1,816,421	45.53%	54.42%
Totals	\$ 331,356,743	\$ 174,731,353	52.73%	

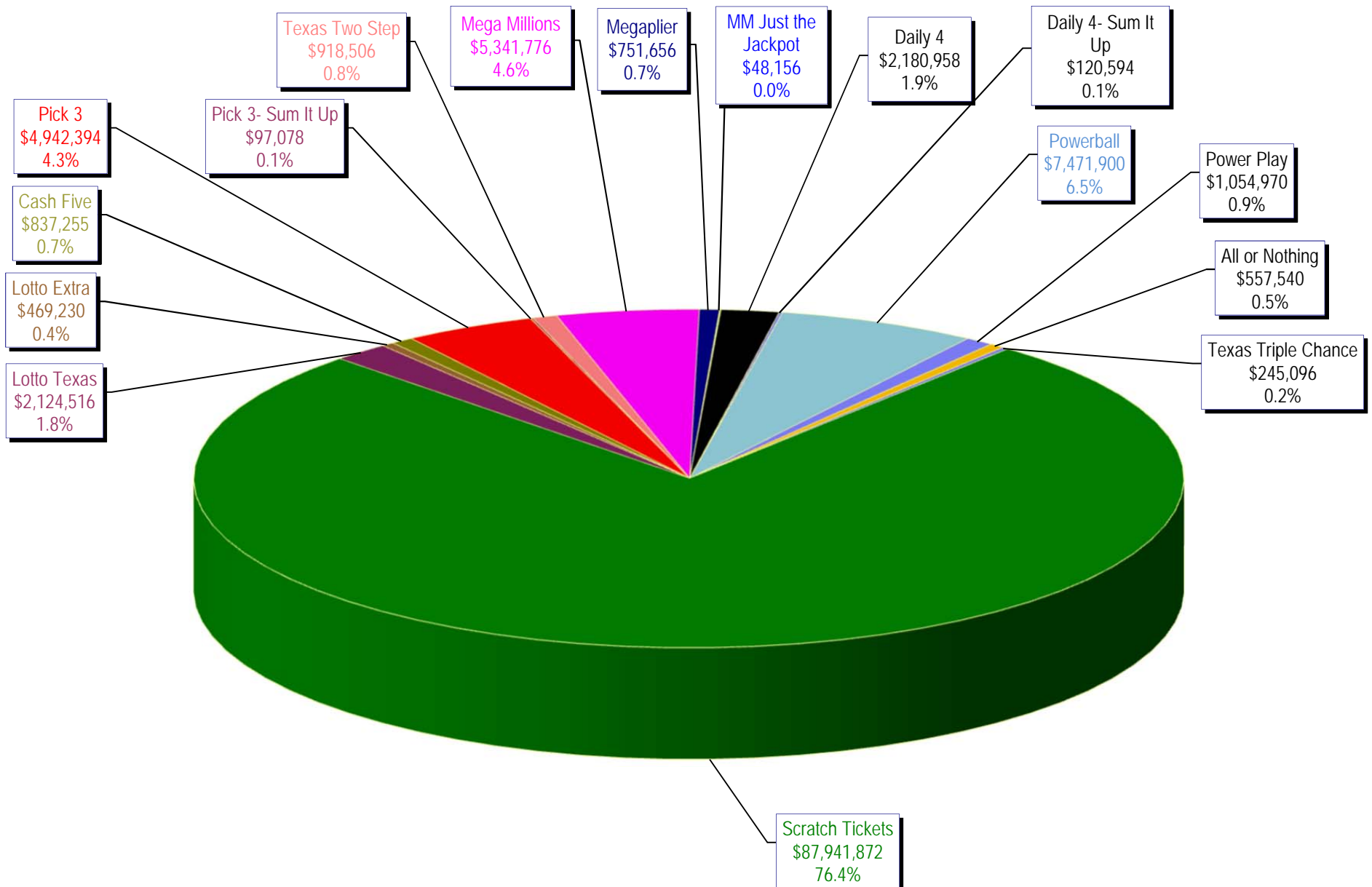
* Before Unclaimed Prizes

**Estimated; depends on # of guaranteed prizes won in Texas

Texas Lottery Commission
Scratch Ticket Sales
For the week ending 12/23/2017
(Unaudited)



Texas Lottery Commission
All Game Sales
 For the week ending 12/23/2017
 (Unaudited)



Texas Lottery Commission - Weekly Sales Summary for FY 2017 (Unaudited)

Week Ended	Scratch Tickets	New Games & Dates	Lotto Texas	Jackpot W	S	Lotto Extra	Pick 3	Pick 3 Sum It Up	Cash Five	Texas Two Step	Jackpot M	TH	Mega Millions	Jackpot T	F	Megaplier	MM Just the Jackpot	Daily 4	Daily 4 Sum It Up	Powerball	Jackpot W	S	Power Play	All or Nothing	Texas Triple Chance	Total	Per Cap.
9/2/2017*	66,786,499	0	1,882,138	7.75	8	407,969	4,127,448	87,462	745,315	757,964	225	250	1,839,333	45	53	546,532		1,675,002	88,460	3,160,562	53	68	527,201	510,296	226,818	83,368,998	2.99
9/9/2017	71,784,232	1894 (\$1.N); 1895 (\$3.N); 1896 (\$5.N); 1897 (\$10.N); 1898 (\$20.N) - 9/05/17	2,030,456	8.25	9	434,404	4,673,693	94,976	810,225	814,157	200	225	2,116,454	61	70	610,101		1,864,288	98,842	3,815,824	83	102	614,504	550,992	250,086	90,563,233	3.25
9/16/2017	72,628,393	0	2,072,973	9.5	10.25	441,815	4,761,239	95,625	803,128	1,009,847	275	400	2,218,181	76	86	632,423		1,969,938	107,496	4,120,318	115	132	647,273	549,860	248,976	92,507,685	3.32
9/23/2017	71,147,147	2000 (\$5.N); 1885 (\$10.N) - 9/18/17	2,083,698	10.75	11.5	444,009	4,652,157	91,944	799,261	958,113	550	200	2,417,135	94	104	676,790		1,999,292	111,399	3,062,637	40	53	505,638	554,074	245,596	89,748,889	3.22
9/30/2017	74,749,619	0	2,123,157	12	12.75	453,258	4,787,745	93,462	817,582	914,011	225	300	1,798,854	15	20	540,169		2,140,708	114,176	3,298,744	66	80	535,906	567,658	251,252	93,186,301	3.34
10/7/2017	78,134,381	1857 (\$1.N); 1871 (\$5.N); 2002 (\$20.N) - 10/02/17	2,158,233	13.5	14	461,982	4,884,513	93,622	837,916	1,157,363	425	575	1,859,000	25	30	555,420		2,086,885	112,246	3,678,352	94	112	585,624	570,242	255,884	97,431,662	3.50
10/14/2017	74,084,207	0	2,161,597	14.75	15.5	460,731	4,743,121	91,735	812,165	832,638	200	225	1,899,412	36	43	564,073		2,060,922	109,910	4,013,728	128	143	621,796	564,614	248,894	93,269,542	3.35
10/21/2017	77,631,892	2003 (\$2.N); 2004 (\$5.N); 1899 (\$50.N) - 10/16/17	2,191,085	16	16.75	466,612	4,682,503	94,156	810,073	1,008,511	300	425	1,677,423	15	20	505,340		2,117,469	116,022	4,422,740	156	173	670,007	563,200	248,496	97,205,528	3.49
10/28/2017	76,385,130	0	2,227,162	17.25	18.25	475,194	4,654,638	92,765	797,066	786,381	200	200	1,737,391	25	30	493,983	22,971	2,144,198	121,467	3,852,082	191	40	595,303	547,396	240,638	95,173,764	3.42
11/4/2017	78,814,323	0	2,333,965	18.75	19.25	494,349	4,926,697	96,245	820,269	887,674	225	275	2,753,000	40	48	421,360	112,668	2,205,239	114,585	3,078,822	52	64	500,061	571,658	248,038	98,378,952	3.53
11/11/2017	78,572,697	2005 (\$1.N); 2006 (\$3.N); 2007 (\$5.N); 2008 (\$10.N) - 11/06/17	2,315,922	19.75	20.5	490,024	4,901,274	94,521	817,975	894,972	400	200	2,652,012	59	71	410,066	62,832	2,069,360	110,879	3,183,712	75	90	507,890	563,738	242,264	97,890,137	3.51
11/18/2017	81,674,704	2085 (\$2.N); 1891 (\$5.N); 2011 (\$10.N) - 11/15/17	2,379,541	21.25	21.75	504,693	4,782,395	93,156	818,168	882,520	225	275	2,820,440	82	95	433,282	53,445	2,053,707	108,480	3,638,718	103	119	564,829	562,306	242,322	101,612,705	3.65
11/25/2017	84,916,870	0	2,353,671	22.5	23.25	504,985	4,590,443	87,556	779,967	1,056,541	400	525	2,980,136	106	119	452,693	45,225	1,908,926	99,032	3,780,406	134	149	582,194	522,808	223,942	104,885,393	3.76
12/2/2017	81,453,005	1862 (\$5.N) - 11/29/17	2,485,060	24	24.75	527,939	4,873,294	92,503	822,515	1,037,952	700	200	3,461,973	132	145	516,938	45,540	2,057,256	111,002	4,218,618	163	177	638,061	556,758	239,766	103,138,180	3.70
12/9/2017	81,251,421	2019 (\$1.N); 2010 (\$5.N); 2014 (\$20.N) - 12/04/17	1,889,914	5	5	412,797	4,711,132	88,700	815,769	867,201	225	275	3,625,922	160	176	538,523	45,915	2,019,801	112,110	4,674,778	193	212	693,130	546,064	235,350	102,528,526	3.68
12/16/2017	83,850,250	1877 (\$5.N) - 12/11/17	1,956,432	5.25	5.5	429,971	4,788,793	92,152	818,587	899,138	400	200	4,204,546	191	208	610,115	45,642	2,099,981	116,295	5,539,284	229	250	809,986	551,440	237,436	107,050,047	3.84
12/23/2017	87,941,872	1879 (\$2.N); 2013 (\$5.N) - 12/18/17	2,124,516	5	5.25	469,230	4,942,394	97,078	837,255	918,506	225	275	5,341,776	223	253	751,656	48,156	2,180,958	120,594	7,471,900	269	300	1,054,970	557,540	245,096	115,103,496	4.13
weekly change	4.9%		8.6%			9.1%	3.2%	5.3%	2.3%	2.2%		27.0%				23.2%	5.5%	3.9%	3.7%	34.9%			30.2%	1.1%	3.2%	7.5%	
	SALES		SALES			SALES	SALES	SALES	SALES	SALES		SALES	SALES	SALES	SALES	SALES	SALES	SALES	SALES	SALES	SALES	SALES	SALES	SALES	SALES	SALES	% of Sales
Calendar Year to date	3,971,335,866		111,458,576			23,048,999	246,277,988	4,804,534	42,311,138	51,395,005		140,959,182	34,497,273	482,394	98,990,785	5,315,177	292,359,934	41,140,954	28,416,498	13,246,454	5,106,040,755	100.0%					
Fiscal Year to date 2018	1,278,279,068		35,773,176			7,663,332	78,017,414	1,525,284	13,289,222	15,006,797		44,364,671	8,953,827	482,394	33,635,276	1,820,552	67,368,141	10,378,861	9,088,526	3,989,270	1,609,635,810	100.0%					

*Full week includes 5 days from FY17