



WEEKLY SALES SUMMARY

Unaudited

Week Ending: 12/26/2009

Texas Lottery Commission
Fiscal Year to Date Sales Comparison
Unaudited

Through the week ending 12/26/2009 (17 weeks)

Sales by Game	FY 2008 *	FY 2009 **	FY 2010	\$ Change		% Change	
				FY 2010 to FY 2008	FY 2010 to FY 2009 to	FY 2010 to FY 2008	FY 2010 to FY 2009
Instants	\$ 908,361,931	\$ 868,867,586	\$ 875,482,814	\$ -32,879,117	\$ 6,615,228	-3.6%	0.8%
Lotto Texas	70,009,906	58,286,009	89,049,652	19,039,746	30,763,643	27.2%	52.8%
Pick 3	92,076,221	89,559,507	85,711,656	-6,364,565	-3,847,852	-6.9%	-4.3%
Pick 3 Sum It Up	1,378,490	1,895,332	1,715,342	336,852	-179,990	-	-9.5%
Cash 5	25,381,767	22,817,940	21,556,373	-3,825,394	-1,261,567	-15.1%	-5.5%
Texas Two Step	13,665,618	14,375,419	14,473,179	807,561	97,760	5.9%	0.7%
Mega Millions	48,364,133	56,162,883	62,750,309	14,386,176	6,587,427	29.7%	11.7%
Megaplier	11,996,198	13,249,899	13,986,280	1,990,082	736,381	16.6%	5.6%
Daily 4	13,204,500	13,533,080	16,566,831	3,362,331	3,033,751	-	22.4%
Daily 4 Sum It Up	3,547,916	1,746,517	1,603,335	-1,944,581	-143,182	-	-8.2%
Total	\$ 1,187,986,679	\$ 1,140,494,171	\$ 1,182,895,770	\$ -5,090,910	\$ 42,401,599	-0.4%	3.7%

* 3 extra days ** 1 extra day

Texas Lottery Commission
 Fiscal Year to Date Cumulative Average Sales Comparison
 Unaudited

Through the week ending 12/26/2009 (17 weeks)

Sales by Game	FY 2008	FY 2009	FY 2010
Instants	\$ 7,569,683	\$ 7,363,285	\$ 7,482,759
Lotto Texas	583,416	493,949	761,108
Pick 3	767,302	758,979	732,578
Pick 3 Sum It Up	11,487	16,062	14,661
Cash 5	211,515	193,372	184,243
Texas Two Step	113,880	121,826	123,702
Mega Millions	403,034	475,957	536,327
Megaplier	99,968	112,287	119,541
Daily 4	110,038	114,687	141,597
Daily 4 Sum It Up	29,566	14,801	13,704
Total	\$ <u>9,899,889</u>	\$ <u>9,665,205</u>	\$ <u>10,110,220</u>
	thru 12/29/2007 120 days	thru 12/27/2008 118 days	thru 12/26/2009 117 days

Texas Lottery Commission
Fiscal Year Over Year Change in Sales
Unaudited
FY 2010 Compared to FY 2009

Week	FY 2010 Week Ending	INSTANT TICKETS				ON-LINE GAMES				TOTAL SALES			
		FY 2010	FY 2009	Difference	% change - Cumulative Sales	FY 2010	FY 2009	Difference	% change - Cumulative Sales	FY 2010	FY 2009	Difference	% change - Cumulative Sales
1	9/5/2009**	\$40,148,241	\$44,890,104	(\$4,741,863)	-10.6%	\$15,859,194	\$14,722,011	\$1,137,184	7.7%	\$56,007,435	\$59,612,115	(\$3,604,680)	-6.0%
2	9/12/2009	\$49,896,100	\$46,309,551	\$3,586,549	7.7%	\$18,206,315	\$13,704,860	\$4,501,455	32.8%	\$68,102,415	\$60,014,411	\$8,088,004	13.5%
3	9/19/2009	\$50,971,937	\$42,923,171	\$8,048,766	18.8%	\$18,859,622	\$12,291,263	\$6,568,359	53.4%	\$69,831,559	\$55,214,434	\$14,617,125	26.5%
4	9/26/2009	\$49,975,243	\$47,042,801	\$2,932,442	6.2%	\$19,345,435	\$14,222,339	\$5,123,096	36.0%	\$69,320,678	\$61,265,140	\$8,055,538	13.1%
5	10/3/2009	\$52,283,569	\$50,747,162	\$1,536,407	3.0%	\$20,991,695	\$15,784,472	\$5,207,223	33.0%	\$73,275,264	\$66,531,634	\$6,743,630	10.1%
6	10/10/2009	\$52,238,261	\$49,763,789	\$2,474,472	5.0%	\$21,547,439	\$15,622,498	\$5,924,941	37.9%	\$73,785,700	\$65,386,287	\$8,399,413	12.8%
7	10/17/2009	\$50,806,599	\$49,299,053	\$1,507,546	3.1%	\$23,114,594	\$15,167,940	\$7,946,654	52.4%	\$73,921,193	\$64,466,993	\$9,454,200	14.7%
8	10/24/2009	\$50,731,592	\$49,977,581	\$754,011	1.5%	\$17,274,411	\$14,525,843	\$2,748,568	18.9%	\$68,006,003	\$64,503,424	\$3,502,579	5.4%
9	10/31/2009	\$50,684,853	\$50,346,542	\$338,311	0.7%	\$15,710,720	\$14,838,845	\$871,876	5.9%	\$66,395,573	\$65,185,387	\$1,210,187	1.9%
10	11/7/2009	\$54,633,928	\$54,860,087	(\$226,159)	-0.4%	\$16,961,611	\$16,057,069	\$904,542	5.6%	\$71,595,539	\$70,917,156	\$678,383	1.0%
11	11/14/2009	\$52,109,218	\$53,484,812	(\$1,375,594)	-2.6%	\$16,407,349	\$15,829,819	\$577,530	3.6%	\$68,516,567	\$69,314,631	(\$798,064)	-1.2%
12	11/21/2009	\$52,427,881	\$52,806,511	(\$378,630)	-0.7%	\$15,829,561	\$16,460,748	(\$631,187)	-3.8%	\$68,257,442	\$69,267,259	(\$1,009,817)	-1.5%
13	11/28/2009	\$50,519,477	\$52,199,741	(\$1,680,264)	-3.2%	\$15,710,447	\$17,397,576	(\$1,687,129)	-9.7%	\$66,229,924	\$69,597,317	(\$3,367,393)	-4.8%
14	12/5/2009	\$54,376,448	\$56,731,851	(\$2,355,403)	-4.2%	\$16,905,341	\$20,363,789	(\$3,458,449)	-17.0%	\$71,281,789	\$77,095,640	(\$5,813,852)	-7.5%
15	12/12/2009	\$52,654,632	\$54,109,617	(\$1,454,985)	-2.7%	\$17,726,695	\$22,952,228	(\$5,225,533)	-22.8%	\$70,381,327	\$77,061,845	(\$6,680,518)	-8.7%
16	12/19/2009	\$54,542,793	\$55,777,328	(\$1,234,535)	-2.2%	\$19,379,751	\$15,833,517	\$3,546,234	22.4%	\$73,922,544	\$71,610,845	\$2,311,699	3.2%
17	12/26/2009	\$56,482,042	\$57,597,885	(\$1,115,843)	-1.9%	\$17,582,779	\$15,851,771	\$1,731,009	10.9%	\$74,064,821	\$73,449,656	\$615,166	0.8%
18	1/2/2010		\$57,582,115				\$16,900,028				\$74,482,143		
19	1/9/2010		\$54,250,945				\$16,203,220				\$70,454,165		
20	1/16/2010		\$51,625,339				\$15,701,605				\$67,326,944		
21	1/23/2010		\$52,789,573				\$15,897,473				\$68,687,046		
22	1/30/2010		\$55,453,471				\$16,908,272				\$72,361,743		
23	2/6/2010		\$62,247,711				\$18,354,314				\$80,602,025		
24	2/13/2010		\$60,509,056				\$19,218,078				\$79,727,134		
25	2/20/2010		\$59,194,623				\$21,098,199				\$80,292,822		
26	2/27/2010		\$58,857,216				\$24,116,924				\$82,974,140		
27	3/6/2010		\$59,552,257				\$23,995,136				\$83,547,393		
28	3/13/2010		\$53,754,084				\$18,769,831				\$72,523,915		
29	3/20/2010		\$52,581,107				\$15,903,038				\$68,484,145		
30	3/27/2010		\$52,560,961				\$16,094,933				\$68,655,894		
31	4/3/2010		\$56,249,759				\$17,357,002				\$73,606,761		
32	4/10/2010		\$54,440,987				\$17,660,600				\$72,101,587		
33	4/17/2010		\$52,755,834				\$18,469,585				\$71,225,419		
34	4/24/2010		\$51,450,968				\$20,216,898				\$71,667,866		
35	5/1/2010		\$52,327,090				\$23,520,573				\$75,847,663		
36	5/8/2010		\$53,214,412				\$16,241,207				\$69,455,619		
37	5/15/2010		\$50,785,227				\$15,990,544				\$66,775,771		
38	5/22/2010		\$56,567,077				\$15,874,447				\$72,441,524		
39	5/29/2010		\$55,359,239				\$16,040,196				\$71,399,435		
40	6/5/2010		\$60,250,125				\$16,301,599				\$76,551,724		
41	6/12/2010		\$54,979,517				\$16,143,215				\$71,122,732		
42	6/19/2010		\$53,109,433				\$16,357,924				\$69,467,357		

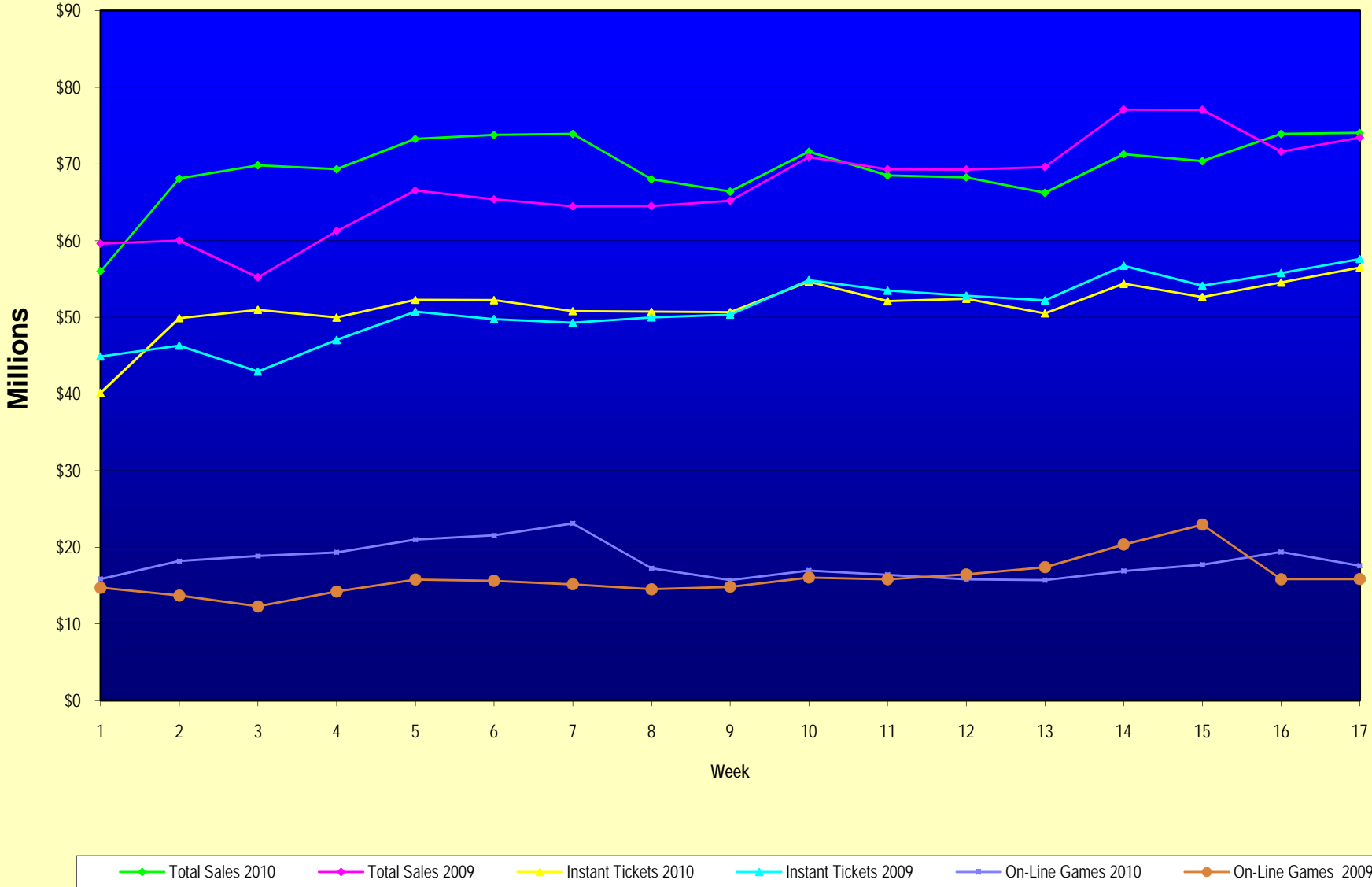
Note: Week 1 is not a full week of sales as this report is prepared on a Fiscal Year basis.

Texas Lottery Commission
Fiscal Year Over Year Change in Sales
Unaudited
FY 2010 Compared to FY 2009

Week	FY 2010 Week Ending	INSTANT TICKETS				ON-LINE GAMES				TOTAL SALES			
		FY 2010	FY 2009	Difference	% change - Cumulative Sales	FY 2010	FY 2009	Difference	% change - Cumulative Sales	FY 2010	FY 2009	Difference	% change - Cumulative Sales
43	6/26/2010		\$53,431,083				\$16,786,203				\$70,217,286		
44	7/3/2010		\$55,518,615				\$18,292,421				\$73,811,036		
45	7/10/2010		\$53,004,390				\$17,842,530				\$70,846,920		
46	7/17/2010		\$52,498,940				\$16,138,341				\$68,637,281		
47	7/24/2010		\$51,550,731				\$16,748,137				\$68,298,868		
48	7/31/2010		\$51,893,977				\$18,065,180				\$69,959,157		
49	8/7/2010		\$54,506,395				\$19,258,117				\$73,764,512		
50	8/14/2010		\$51,766,530				\$20,828,293				\$72,594,823		
51	8/21/2010		\$51,909,040				\$24,913,396				\$76,822,436		
52	8/28/2010		\$50,848,517				\$35,661,563				\$86,510,080		
53			\$13,288,367				\$3,085,816				\$16,374,183		
Total thru Current Week		\$875,482,814	\$868,867,586	\$6,615,228	0.8%	\$307,412,956	\$271,626,585	\$35,786,371	13.2%	\$1,182,895,770	\$1,140,494,171	\$42,401,599	3.7%
Fiscal Year Total		\$875,482,814	\$2,791,532,297			\$307,412,956	\$928,581,414			\$1,182,895,770	\$3,720,113,711		

** FY 2010 includes 5 days; FY 2009 includes 6 days

Texas Lottery Commission Fiscal Year Over Year Change in Sales



Note: Week 1 is not a full week of sales as this report is prepared on a Fiscal Year basis.

Texas Lottery Commission
Instant Tickets by Price Point
Sales, Prize Expense, Sales Contribution and Payout Percentage With Year Over Year Changes
Unaudited

Fiscal Year	Price Point	# of Active Games	FY Sales	% of Instant Ticket Sales	Year over Year Change in Sales	FY Prize Expense	Year over Year Change in Prize Expense	FY Sales Contribution	Year over Year Change in Contribution	Average Prize Payout %	Year over Year Change in Payout %
2009	\$1.00	34	74,318,592	8.6%		44,750,807		29,567,785		60.2%	0.2%
thru	\$2.00	29	147,948,432	17.0%		95,936,652		52,011,780		64.8%	-0.7%
12/27/2008	\$3.00	13	95,018,022	10.9%		62,467,796		32,550,226		65.7%	0.0%
	\$5.00	32	265,446,179	30.6%		180,538,802		84,907,377		68.0%	0.1%
	\$7.00	6	37,796,801	4.4%		25,708,346		12,088,455		68.0%	0.0%
	\$10.00	14	118,451,210	13.6%		82,902,018		35,549,192		70.0%	0.0%
	\$20.00	7	83,403,280	9.6%		59,861,116		23,542,164		71.8%	0.0%
	\$25.00	1	2,377,050	0.3%		1,728,939		648,111		72.7%	0.2%
	\$30.00	3	7,826,370	0.9%		5,671,598		2,154,772		72.5%	0.1%
	\$50.00	3	36,281,650	4.2%		26,232,149		10,049,501		72.3%	0.2%
Total		142	\$868,867,586			\$585,798,223		\$283,069,363		67.4%	-0.4%
2010	\$1.00	28	73,281,350	8.4%		44,056,168		29,225,182		60.1%	0.0%
thru	\$2.00	31	124,923,542	14.3%		82,629,159		42,294,383		66.1%	1.5%
12/26/2009	\$3.00	15	109,489,092	12.5%		71,982,572		37,506,520		65.7%	0.2%
	\$5.00	34	248,575,933	28.4%		168,853,120		79,722,813		67.9%	-0.1%
	\$7.00	5	36,559,817	4.2%		24,859,931		11,699,886		68.0%	0.0%
	\$10.00	12	126,266,400	14.4%		88,325,077		37,941,323		70.0%	0.0%
	\$20.00	5	133,070,780	15.2%		99,326,415		33,744,365		74.6%	2.0%
	\$25.00	0	-	0.0%		-		-		0.0%	-100.0%
	\$30.00	0	-	0.0%		-		-		0.0%	-100.0%
	\$50.00	2	23,315,900	2.7%		18,061,857		5,254,043		77.5%	3.9%
Total		132	\$875,482,814			\$598,094,300		\$277,388,514		68.3%	0.8%
Variance	\$1.00	-6	-1,037,242		-1.4%	-694,639	-1.6%	-342,603	-1.2%	-0.10%	
2010 to	\$2.00	2	-23,024,890		-15.6%	-13,307,494	-13.9%	-9,717,396	-18.7%	1.30%	
2009	\$3.00	2	14,471,070		15.2%	9,514,776	15.2%	4,956,294	15.2%	0.00%	
	\$5.00	2	-16,870,246		-6.4%	-11,685,682	-6.5%	-5,184,564	-6.1%	-0.09%	
	\$7.00	-1	-1,236,984		-3.3%	-848,415	-3.3%	-388,569	-3.2%	-0.02%	
	\$10.00	-2	7,815,190		6.6%	5,423,059	6.5%	2,392,131	6.7%	-0.04%	
	\$20.00	-2	49,667,500		59.6%	39,465,300	65.9%	10,202,200	43.3%	2.87%	
	\$25.00	-1	-2,377,050		-100.0%	-1,728,939	-100.0%	-648,111	-100.0%	-72.73%	
	\$30.00	-3	-7,826,370		-100.0%	-5,671,598	-100.0%	-2,154,772	-100.0%	-72.47%	
	\$50.00	-1	-12,965,750		-35.7%	-8,170,292	-31.1%	-4,795,458	-47.7%	5.16%	
Total		-10	\$6,615,228		0.8%	\$12,296,077	2.1%	-\$5,680,845	-2.0%	0.90%	

Texas Lottery Commission
Instant Tickets by Price Point
Sales, Prize Expense, Sales Contribution and Payout Percentage With Year Over Year Changes
 Unaudited

Notes - Instant Ticket Variances

		FY 2010		FY 2009		Difference
Sales	\$1 - \$7		\$592,829,734		\$620,528,026	-\$27,698,292
Prize Exp.	\$1 - \$7		\$392,380,950		\$409,402,404	-\$17,021,454
Sales Cont.	\$1 - \$7		\$200,448,784		\$211,125,622	-\$10,676,838
Prize Exp. %	\$1 - \$7		66.2%		66.0%	0.2%
		FY 2010		FY 2009		Difference
Sales	\$10 - \$50		\$282,653,080		\$248,339,560	\$34,313,520
Prize Exp.	\$10 - \$50		\$205,713,350		\$176,395,819	\$29,317,530
Sales Cont.	\$10 - \$50		\$76,939,730		\$71,943,741	\$4,995,990
Prize Exp. %	\$10 - \$50		72.8%		71.0%	1.7%
		FY 2010		FY 2009		Difference
Sales	Instant		\$875,482,814		\$868,867,586	\$6,615,228
Prize Exp.	Instant		\$598,094,300		\$585,798,223	\$12,296,077
Sales Cont.	Instant		\$277,388,514		\$283,069,363	-\$5,680,849
Prize Exp. %	Instant		68.3%		67.4%	0.9%

		FY 2010		FY 2009		Difference
Sales	\$1 - \$10		\$719,096,134		\$738,979,236	-\$19,883,102
Prize Exp.	\$1 - \$10		\$480,706,027		\$492,304,421	-\$11,598,394
Sales Cont.	\$1 - \$10		\$238,390,107		\$246,674,815	-\$8,284,708
Prize Exp. %	\$1 - \$10		66.8%		66.6%	0.2%
		FY 2010		FY 2009		Difference
Sales	\$20 - \$50		\$156,386,680		\$129,888,350	\$26,498,330
Prize Exp.	\$20 - \$50		\$117,388,273		\$93,493,802	\$23,894,471
Sales Cont.	\$20 - \$50		\$38,998,407		\$36,394,548	\$2,603,859
Prize Exp. %	\$20 - \$50		75.1%		72.0%	3.1%
		FY 2010		FY 2009		Difference
Sales	Instant		\$875,482,814		\$868,867,586	\$6,615,228
Prize Exp.	Instant		\$598,094,300		\$585,798,223	\$12,296,077
Sales Cont.	Instant		\$277,388,514		\$283,069,363	-\$5,680,849
Prize Exp. %	Instant		68.3%		67.4%	0.9%

Texas Lottery Commission
 Weekly Sales Summary
 & Comparison to Previous Week
 Unaudited

	Week Ending 12/26/2009		Week Ending 12/19/2009			
	<u>THIS WEEK</u>	% of Sales	<u>LAST WEEK</u>	% of Sales	<u>\$ change</u>	<u>% change</u>
Total Sales	<u>\$74,064,821</u>		<u>\$73,922,544</u>		<u>\$142,278</u>	0.19%
Instant Tickets	<u>\$56,482,042</u>	76.3%	<u>\$54,542,793</u>	73.8%	<u>\$1,939,249</u>	3.56%
Lotto Texas	\$4,400,669	5.9%	\$4,355,440	5.9%	\$45,229	1.04%
Pick 3	\$4,950,248	6.7%	\$5,115,559	6.9%	-\$165,312	-3.23%
Pick 3 Sum It Up	\$92,930	0.1%	\$100,563	0.1%	-\$7,633	-7.59%
Cash 5	\$1,243,523	1.7%	\$1,293,347	1.7%	-\$49,824	-3.85%
Texas Two Step	\$767,273	1.0%	\$1,288,820	1.7%	-\$521,547	-40.47%
Mega Millions	\$4,188,741	5.7%	\$5,052,350	6.8%	-\$863,609	-17.09%
Megaplier	\$866,559	1.2%	\$1,028,695	1.4%	-\$162,136	-15.76%
Daily 4	\$982,221	1.3%	\$1,046,578	1.4%	-\$64,357	-6.15%
Daily 4 Sum It Up	\$90,617	0.1%	\$98,400	0.1%	-\$7,783	-7.91%
Total Online Sales	<u>\$17,582,779</u>		<u>\$19,379,751</u>		<u>-\$1,796,972</u>	-9.27%

* Totals may not sum due to rounding.

Texas Lottery Commission
Weekly Sales Summary
Unaudited

INSTANT TICKETS
TOP TEN SELLING GAMES

For the Week Ending : 12/26/2009

Rank	Price Point	Game	Sales (Millions)
1	\$ 20	\$500,000,000 BLOCKBUSTER	\$ 5.074
2	\$ 10	JINGLE JUMBO BUCKS	\$ 3.205
3	\$ 5	MERRY MONEY	\$ 2.992
4	\$ 20	MERRY MILLIONAIRE	\$ 2.573
5	\$ 5	WINTER WINNINGS	\$ 2.338
6	\$ 5	FIVE STAR CASH	\$ 2.099
7	\$ 5	CASINO ROYALE	\$ 2.053
8	\$ 7	SPARKLING 7'S	\$ 1.751
9	\$ 10	SET FOR LIFE	\$ 1.696
10	\$ 3	TRIPLER	\$ 1.638

Texas Lottery Commission
Prize Payout Tracking Report
Unaudited

Through Week Ending 12/26/2009

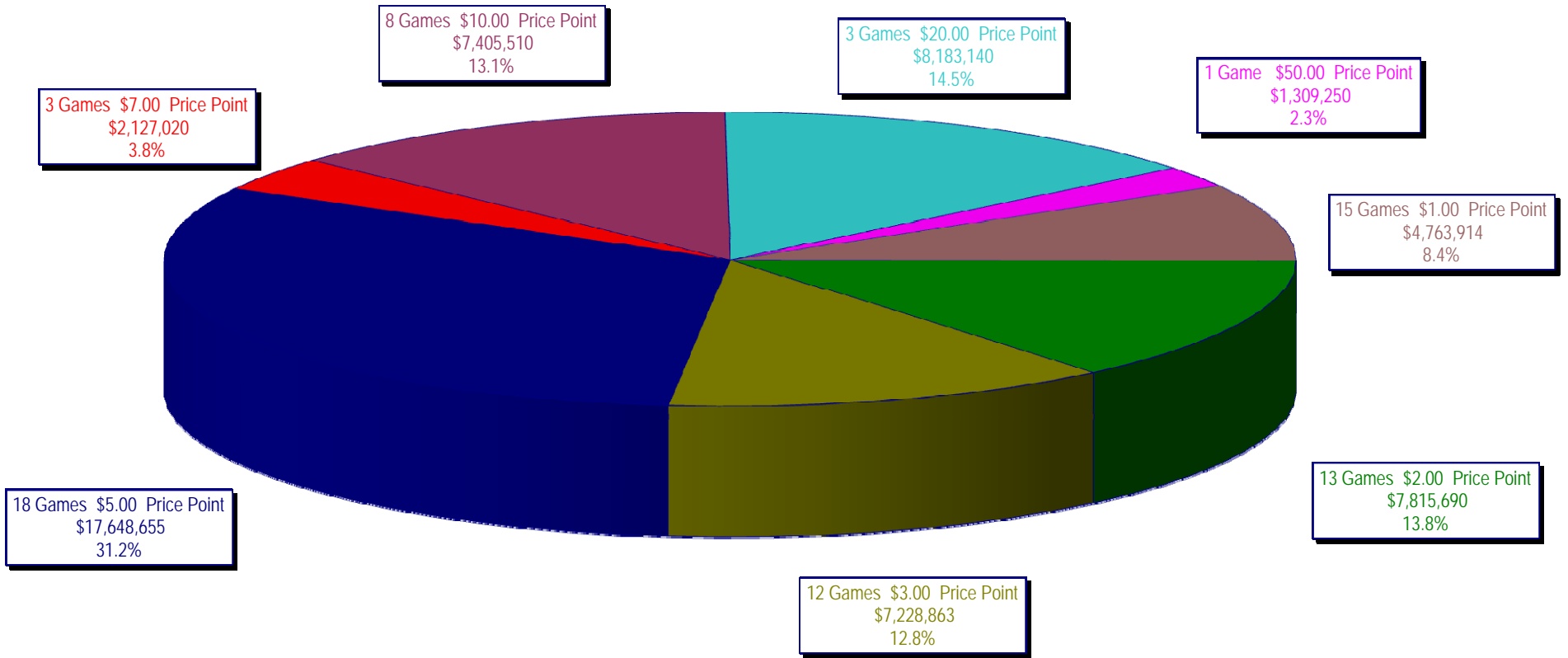
On-Line Sales

		FY Sales Through Week Ending 12/26/2009		FY Prize Expense Through Week Ending 12/26/2009	Actual* Prize Payout	Base Payout (Prize Pool)
Lotto	\$	89,049,652	\$	44,551,153	50.03%	50.00%
Pick 3		85,711,656		38,211,540	44.58%	50.00%
Pick 3 Sum It Up		1,715,342		774,345	45.14%	50.00%
Cash 5		21,556,373		11,743,064	54.48%	50.00%
Texas Two-Step		14,473,179		7,568,568	52.29%	50.00%
Mega Millions		62,750,309		31,585,279	50.33%	50.00%**
Megaplier		13,986,280		4,255,624	30.43%	N/A
Daily 4		16,566,831		8,149,775	49.19%	50.00%
Daily 4-Sum It Up		1,603,335		712,500	44.44%	50.00%
Totals	\$	307,412,956	\$	147,551,847	48.00%	

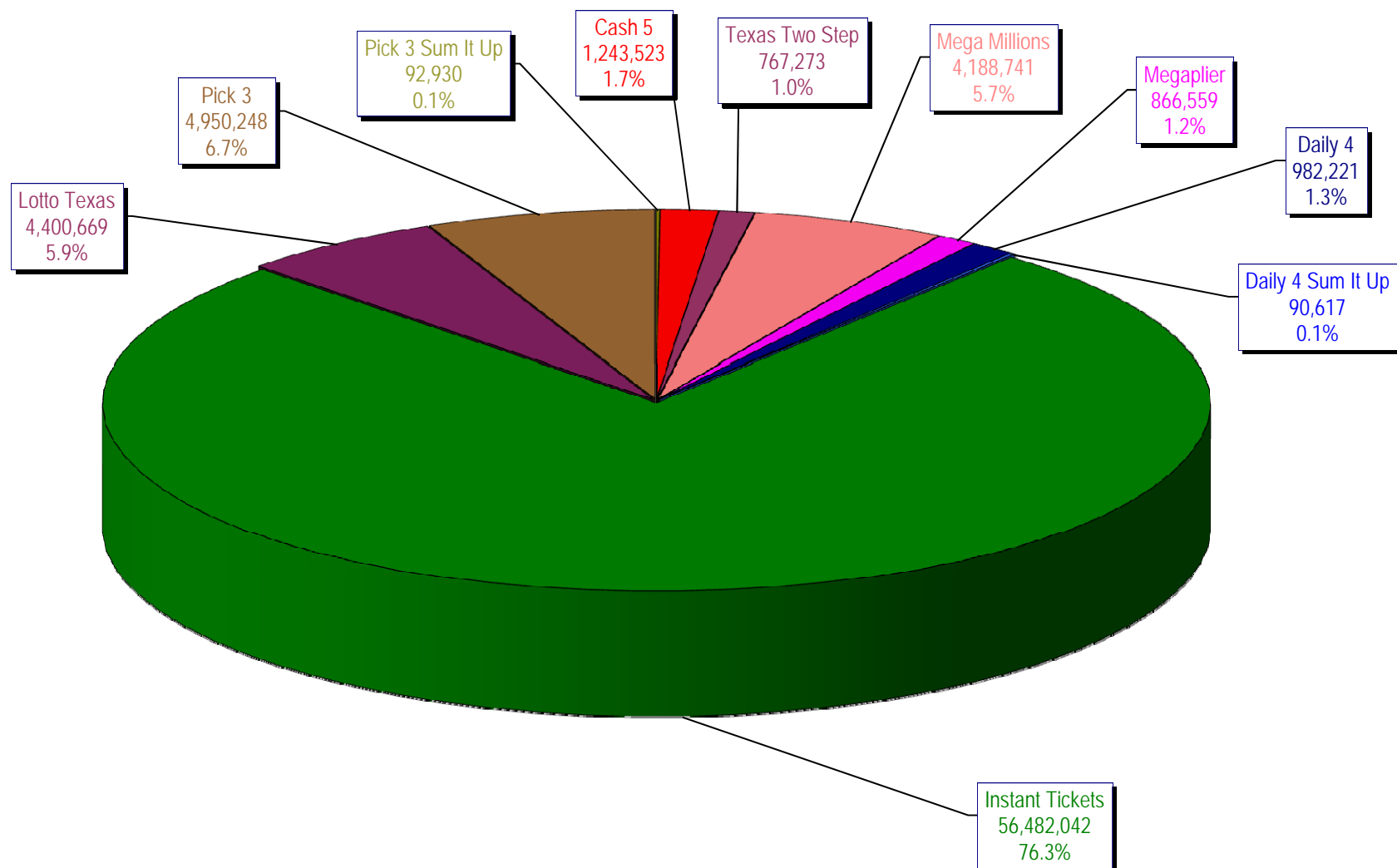
* Before Unclaimed Prizes

** Estimated; depends on # of guaranteed prizes won in Texas

Texas Lottery Commission
Instant Ticket Sales
For the Week Ending 12/26/2009
(Unaudited)



Texas Lottery Commission
All Game Sales
For the Week Ending 12/26/2009
(Unaudited)



Texas Lottery Commission - Weekly Sales Summary for FY 2010 (Unaudited)

Week Ended	Instant Games	New Games & Dates	Lotto Texas	Jackpot W	S	Pick 3	Pick 3 Sum It Up	Cash 5	Texas Two Step	Jackpot M	TH	Mega Millions	Jackpot T	F	Megaplier	Daily 4	Daily 4 Sum It Up	Total	Per Cap.
9/5/2009	53,436,608.00	1183 (\$2,N) - 08/31/09	6,294,287.00	45	47	5,276,229.00	104,886.00	1,338,093.00	1,212,330.00	1.2	200	2,959,401.00	12	12	708,622.00	955,411.00	95,751.00	72,381,618.00	2.98
9/12/2009	49,896,100.00	1200 (\$1,N); 1201 (\$10,N) - 09/07/09	6,426,945.00	49	51	5,109,927.50	104,641.00	1,278,982.00	771,782.00	225	200	2,811,431.00	18	28	693,407.00	918,268.00	90,931.50	68,102,415.00	2.80
9/19/2009	50,971,937.00	1202 (\$3,N); 1185 (\$5,N) - 09/14/09	6,496,645.00	53	55	5,176,010.00	103,700.00	1,295,302.00	803,124.00	200	225	3,164,844.00	38	51	760,088.00	965,671.50	94,237.00	69,831,558.50	2.87
9/26/2009	49,975,243.00	1141 (\$1,N); 1259 (\$3,N) - 09/21/09	6,765,369.00	57	59	4,894,237.50	98,171.00	1,271,129.00	915,249.00	275	400	3,568,088.00	62	75	822,408.00	918,596.00	92,187.50	69,320,678.00	2.85
10/3/2009	52,283,569.00	1203 (\$2,N); 1172 (\$5,N) - 09/28/09	7,003,107.00	61	63	5,156,873.00	102,841.50	1,315,863.00	1,111,913.00	525	650	4,270,019.00	88	105	939,935.00	993,158.50	97,984.50	73,275,263.50	3.01
10/10/2009	52,238,261.00	1205 (\$1,N); 1263 (\$3,N) - 10/05/09	7,061,948.00	64	67	5,050,571.00	102,586.50	1,300,852.00	811,464.00	200	225	5,100,350.00	122	145	1,050,507.00	971,147.50	98,012.50	73,785,699.50	3.03
10/17/2009	50,806,599.00	1187 (\$2,N); 1193 (\$20,N) - 10/12/09	7,262,683.00	70	73	4,990,457.00	99,389.50	1,276,305.00	769,253.00	200	200	6,449,660.00	170	200	1,245,391.00	931,084.00	90,371.00	73,921,192.50	3.04
10/24/2009	50,731,592.00	1188 (\$3,N); 1189 (\$5,N) - 10/19/09	5,785,292.00	76	4	4,845,815.00	93,256.00	1,282,033.00	806,971.00	225	275	2,776,628.00	12	18	663,491.00	931,641.00	89,284.00	68,006,003.00	2.80
10/31/2009	50,684,853.00	1192 (\$10,N); 1186 (\$1,N) - 10/26/09	3,749,006.00	5	6	4,944,409.00	98,542.50	1,289,523.00	815,750.00	375	200	2,988,991.00	28	40	717,574.00	1,006,435.00	100,489.50	66,395,573.00	2.73
11/7/2009	54,633,928.00	1191 (\$7,N) - 11/02/09	3,982,319.00	7	8	5,265,020.50	105,180.50	1,339,215.00	853,140.00	225	275	3,458,403.00	50	63	795,045.00	1,058,564.00	104,724.00	71,595,539.00	2.94
11/14/2009	52,109,218.00	1218 (\$2,N); 1184 (\$5,N) - 11/09/09	3,985,493.00	9	10	5,172,602.50	104,782.00	1,274,573.00	829,607.00	375	200	3,210,618.00	77	12	752,365.00	983,342.50	93,966.00	68,516,567.00	2.82
11/21/2009	52,427,881.00	0	3,943,958.00	11	12	5,123,802.00	104,705.00	1,255,026.00	797,796.00	225	275	2,834,318.00	17	27	687,221.00	990,042.00	92,693.00	68,257,442.00	2.81
11/28/2009	50,519,477.00	1206 (\$1,N); 1190 (\$5,N); 1264 (\$1,N) - 11/23/09	3,966,034.00	13	14	5,043,210.00	102,783.50	1,202,798.00	693,774.00	200	225	2,932,809.00	37	47	691,194.00	985,336.50	92,508.00	66,229,924.00	2.72
12/5/2009	54,376,448.00	0	4,004,632.00	15	16	5,393,458.00	111,441.50	1,288,282.00	873,210.00	250	350	3,297,486.00	57	69	773,136.00	1,063,424.00	100,271.00	71,281,788.50	2.93
12/12/2009	52,654,632.00	1159 (\$2,N); 1182 (\$5,N) - 12/07/09 1196 (\$5,N) - 12/09/09	4,105,013.00	17	18	5,091,389.00	102,613.50	1,294,933.00	1,075,732.00	475	600	4,054,401.00	83	100	874,842.00	1,030,471.50	97,299.50	70,381,326.50	2.89
12/19/2009	54,542,793.00	1207 (\$1,N); 1208 (\$3,N) - 12/14/09	4,355,440.00	20	21	5,115,559.00	100,562.50	1,293,347.00	1,288,820.00	750	925	5,052,350.00	118	140	1,028,695.00	1,046,577.50	98,399.50	73,922,543.50	3.04
12/26/2009	56,482,042.00	1209 (\$2,N); 1168 (\$5,N) - 12/21/09	4,400,669.00	22	24	4,950,247.50	92,929.50	1,243,523.00	767,273.00	200	200	4,188,741.00	162	12	866,559.00	982,220.50	90,616.50	74,064,821.00	3.04
weekly change	3.56%		1.04%			-3.23%	-7.59%	-3.85%	-40.47%			-17.09%			-15.76%	-6.15%	-7.91%	0.19%	
	SALES		SALES			SALES	SALES	SALES	SALES			SALES			SALES	SALES	SALES	SALES	% of Sales
Startup to date	37,147,601,113.00		10,568,663,199.00			3,669,309,413.00	14,116,417.50	2,211,460,513.00	492,261,110.00			1,204,280,908.45			279,554,567.00	105,617,041.50	15,357,161.50	55,916,355,415.95	100.0%
Calendar Year to date	2,765,697,438.00		229,293,907.00			278,149,914.00	175,670.50	68,722,059.00	51,101,973.00			220,324,004.95			47,686,752.00	49,409,383.00	5,216,354.00	3,715,777,455.45	100.0%
Fiscal Year to date 2010	875,482,814.00		89,049,652.00			85,711,655.50	1,715,342.00	21,556,373.00	14,473,179.00			62,750,309.00			13,986,280.00	16,566,830.50	1,603,334.50	1,182,895,769.50	100.0%