



WEEKLY SALES SUMMARY

Unaudited

[Week Ending: 12/30/2017](#)

Texas Lottery Commission
Fiscal Year to Date Sales Comparison
Unaudited

Through the Week Ending 12/30/2017 (18 Weeks)

Sales by Game	FY 2016 *	FY 2017 **	FY 2018	\$ Change		% Change	
				FY 2018 to FY 2016	FY 2018 to FY 2017	FY 2018 to FY 2016	FY 2018 to FY 2017
Scratch Tickets	\$ 1,189,725,268	\$ 1,242,163,224	\$ 1,366,368,814	\$ 176,643,546	\$ 124,205,590	14.8%	10.0%
Lotto Texas	43,135,466	37,049,946	38,134,018	-5,001,448	1,084,072	-11.6%	2.9%
Lotto Extra	7,305,942	7,098,355	8,183,082	877,140	1,084,727	12.0%	15.3%
Pick 3	85,923,104	82,347,597	82,670,229	-3,252,875	322,633	-3.8%	0.4%
Pick 3 Sum It Up	1,704,240	1,564,206	1,619,538	-84,702	55,332	-5.0%	3.5%
Cash Five	15,794,085	14,701,477	14,101,216	-1,692,870	-600,262	-10.7%	-4.1%
Texas Two Step	17,696,064	18,565,659	16,041,170	-1,654,894	-2,524,489	-9.4%	-13.6%
Mega Millions	43,763,753	34,892,783	53,129,215	9,365,462	18,236,432	21.4%	52.3%
Megaplier	10,901,380	9,591,430	10,101,137	-800,243	509,707	-7.3%	5.3%
MM Just the Jackpot	-	-	547,470	547,470	547,470	-	-
Daily 4	29,710,064	31,012,227	35,696,066	5,986,002	4,683,839	20.1%	15.1%
Daily 4 Sum It Up	1,532,292	1,637,131	1,939,642	407,351	302,511	26.6%	18.5%
Powerball	77,421,781	74,869,211	80,079,339	2,657,558	5,210,128	3.4%	7.0%
Power Play	9,912,058	10,536,864	12,054,991	2,142,933	1,518,127	21.6%	14.4%
All or Nothing	10,601,604	9,714,824	9,643,904	-957,700	-70,920	-9.0%	-0.7%
Texas Triple Chance	9,348,445	5,311,774	4,227,086	-5,121,359	-1,084,688	-54.8%	-20.4%
Total	\$ 1,554,475,545	\$ 1,581,056,707	\$ 1,734,536,916	\$ 180,061,371	\$ 153,480,209	11.6%	9.7%

* 3 extra days

** 1 extra day

Texas Lottery Commission
Fiscal Year to Date Cumulative Average Sales Comparison
Unaudited

Through the Week Ending 12/30/2017 (18 Weeks)

Sales by Game	FY 2016	FY 2017	FY 2018
Scratch Tickets	\$ 9,594,559	\$ 10,181,666	\$ 11,292,304
Lotto Texas	347,867	303,688	315,157
Lotto Extra	58,919	58,183	67,629
Pick 3	692,928	674,980	683,225
Pick 3 Sum It Up	13,744	12,821	13,385
Cash Five	127,372	120,504	116,539
Texas Two Step	142,710	152,178	132,572
Mega Millions	352,933	286,006	439,084
Megaplier	87,914	78,618	83,480
MM Just the Jackpot	-	- **	8,554
Daily 4	239,597	254,199	295,009
Daily 4 Sum It Up	12,357	13,419	16,030
Powerball	624,369	613,682	661,813
Power Play	79,936	86,368	99,628
All or Nothing	85,497	79,630	79,702
Texas Triple Chance *	95,392	43,539	34,935
Total	\$ 12,556,095	\$ 12,959,481	\$ 14,339,046

	thru 1/02/2016	thru 12/31/2016	thru 12/30/2017
	124 days	122 days	121 days
*	98 days		64 days
		**	

Texas Lottery Commission
Fiscal Year Over Year Change in Sales
Unaudited
FY 2018 Compared to FY 2017

			SCRATCH TICKETS				DRAW GAMES				TOTAL SALES			
FY 2018			FY 2018	FY 2017	Difference	% change - Cumulative Sales	FY 2018	FY 2017	Difference	% change - Cumulative Sales	FY 2018	FY 2017	Difference	% change - Cumulative Sales
Week	Week Ending													
1	9/2/2017 *		\$23,058,926	\$32,980,266	(\$9,921,340)	-30.1%	\$6,902,847	\$10,218,656	(\$3,315,809)	-32.4%	\$29,961,773	\$43,198,922	(\$13,237,149)	-30.6%
2	9/9/2017		\$71,784,232	\$65,952,418	\$5,831,814	8.8%	\$18,779,001	\$19,635,377	(\$856,376)	-4.4%	\$90,563,233	\$85,587,795	\$4,975,438	5.8%
3	9/16/2017		\$72,828,393	\$66,196,270	\$6,632,123	10.0%	\$19,679,292	\$20,915,290	(\$1,235,999)	-5.9%	\$92,507,685	\$87,111,560	\$5,396,125	6.2%
4	9/23/2017		\$71,147,147	\$64,383,005	\$6,764,142	10.5%	\$18,601,742	\$17,451,165	\$1,150,577	6.6%	\$89,748,889	\$81,834,170	\$7,914,719	9.7%
5	9/30/2017		\$74,749,619	\$67,349,951	\$7,399,668	11.0%	\$18,436,682	\$17,519,852	\$916,830	5.2%	\$93,186,301	\$84,869,803	\$8,316,498	9.8%
6	10/7/2017		\$78,134,381	\$71,598,690	\$6,535,691	9.1%	\$19,297,281	\$18,211,107	\$1,086,174	6.0%	\$97,431,662	\$89,809,797	\$7,621,865	8.5%
7	10/14/2017		\$74,084,207	\$69,444,762	\$4,639,445	6.7%	\$19,185,335	\$18,075,261	\$1,110,074	6.1%	\$93,269,542	\$87,520,023	\$5,749,519	6.6%
8	10/21/2017		\$77,631,892	\$69,317,066	\$8,314,826	12.0%	\$19,573,636	\$18,422,336	\$1,151,300	6.2%	\$97,205,528	\$87,739,402	\$9,466,126	10.8%
9	10/28/2017		\$76,385,130	\$69,729,599	\$6,655,531	9.5%	\$18,788,634	\$18,535,248	\$253,386	1.4%	\$95,173,764	\$88,264,847	\$6,908,917	7.8%
10	11/4/2017		\$78,814,323	\$73,451,702	\$5,362,621	7.3%	\$19,564,629	\$20,151,939	(\$587,310)	-2.9%	\$98,378,952	\$93,603,641	\$4,775,312	5.1%
11	11/11/2017		\$78,572,697	\$70,998,320	\$7,574,377	10.7%	\$19,317,440	\$19,925,460	(\$608,020)	-3.1%	\$97,890,137	\$90,923,780	\$6,966,358	7.7%
12	11/18/2017		\$81,674,704	\$75,265,196	\$6,409,508	8.5%	\$19,938,001	\$21,424,637	(\$1,486,636)	-6.9%	\$101,612,705	\$96,689,833	\$4,922,872	5.1%
13	11/25/2017		\$84,916,870	\$68,983,157	\$15,933,713	23.1%	\$19,968,524	\$24,223,331	(\$4,254,808)	-17.6%	\$104,885,393	\$93,206,488	\$11,678,905	12.5%
14	12/2/2017		\$81,453,005	\$72,688,514	\$8,764,491	12.1%	\$21,685,175	\$17,653,328	\$4,031,847	22.8%	\$103,138,180	\$90,341,842	\$12,796,338	14.2%
15	12/9/2017		\$81,251,421	\$71,676,549	\$9,574,872	13.4%	\$21,277,106	\$18,150,590	\$3,126,516	17.2%	\$102,528,526	\$89,827,139	\$12,701,388	14.1%
16	12/16/2017		\$83,850,250	\$73,909,726	\$9,940,524	13.4%	\$23,199,797	\$19,814,333	\$3,385,464	17.1%	\$107,050,047	\$93,724,059	\$13,325,988	14.2%
17	12/23/2017		\$87,941,872	\$77,369,179	\$10,572,693	13.7%	\$27,161,624	\$19,276,415	\$7,885,209	40.9%	\$115,103,496	\$96,645,594	\$18,457,902	19.1%
18	12/30/2017		\$88,089,746	\$80,868,854	\$7,220,892	8.9%	\$36,811,359	\$19,289,161	\$17,522,199	90.8%	\$124,901,105	\$100,158,015	\$24,743,091	24.7%
19	1/6/2018			\$73,328,624				\$18,611,644				\$91,940,268		
20	1/13/2018			\$73,471,643				\$20,351,397				\$93,823,040		
21	1/20/2018			\$72,229,342				\$20,349,310				\$92,578,652		
22	1/27/2018			\$72,056,793				\$21,668,657				\$93,725,450		
23	2/3/2018			\$77,292,806				\$22,161,789				\$99,454,595		
24	2/10/2018			\$78,699,192				\$22,100,245				\$100,799,437		
25	2/17/2018			\$77,864,124				\$24,776,465				\$102,640,589		
26	2/24/2018			\$80,287,015				\$28,133,116				\$108,420,131		
27	3/3/2018			\$87,500,184				\$20,213,859				\$107,714,043		
28	3/10/2018			\$84,966,053				\$21,024,757				\$105,990,810		
29	3/17/2018			\$82,972,977				\$20,434,291				\$103,407,268		
30	3/24/2018			\$82,217,628				\$20,282,992				\$102,500,620		
31	3/31/2018			\$86,271,920				\$19,497,142				\$105,769,062		
32	4/7/2018			\$81,499,404				\$17,854,294				\$99,353,698		
33	4/14/2018			\$81,831,134				\$17,865,636				\$99,696,770		
34	4/21/2018			\$80,531,863				\$18,337,257				\$98,869,120		
35	4/28/2018			\$81,433,819				\$18,956,981				\$100,390,800		
36	5/5/2018			\$84,857,262				\$19,489,624				\$104,346,886		
37	5/12/2018			\$81,090,824				\$19,420,237				\$100,511,061		
38	5/19/2018			\$80,557,866				\$20,939,291				\$101,497,157		
39	5/26/2018			\$78,141,293				\$21,072,651				\$99,213,944		
40	6/2/2018			\$78,991,820				\$23,569,252				\$102,561,072		
41	6/9/2018			\$77,859,970				\$29,337,930				\$107,197,900		
42	6/16/2018			\$75,964,093				\$18,618,777				\$94,582,870		

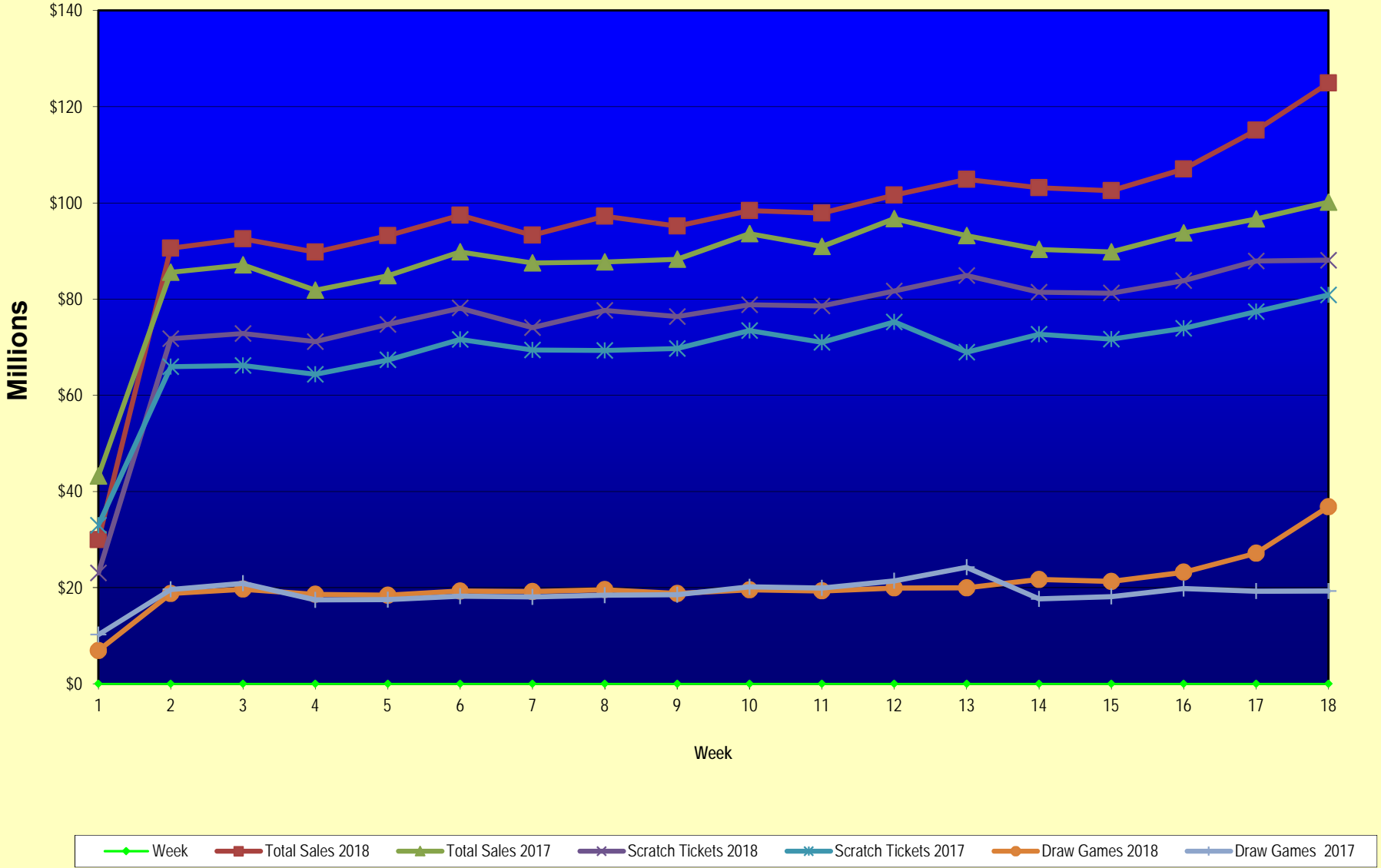
Texas Lottery Commission
Fiscal Year Over Year Change in Sales
Unaudited
FY 2018 Compared to FY 2017

			SCRATCH TICKETS				DRAW GAMES				TOTAL SALES			
FY 2018			FY 2018	FY 2017	Difference	% change - Cumulative Sales	FY 2018	FY 2017	Difference	% change - Cumulative Sales	FY 2018	FY 2017	Difference	% change - Cumulative Sales
Week	Week Ending													
43	6/23/2018			\$75,379,863				\$18,464,310				\$93,844,173		
44	6/30/2018			\$76,450,854				\$19,685,004				\$96,135,858		
45	7/7/2018			\$75,420,516				\$20,817,697				\$96,238,213		
46	7/14/2018			\$74,068,426				\$21,553,240				\$95,621,666		
47	7/21/2018			\$75,926,884				\$21,909,933				\$97,836,817		
48	7/28/2018			\$68,526,927				\$22,791,762				\$91,318,689		
49	8/4/2018			\$74,104,794				\$27,396,555				\$101,501,349		
50	8/11/2018			\$73,356,820				\$37,340,879				\$110,697,699		
51	8/18/2018			\$74,114,510				\$42,787,014				\$116,901,524		
52	8/25/2018			\$70,061,982				\$55,854,516				\$125,916,498		
	8/31/2018 **			\$43,727,573				\$9,679,652				\$53,407,225		
Total thru Current Week			\$1,366,368,814	\$1,242,163,224	\$124,205,590	10.0%	\$368,168,102	\$338,893,483	\$29,274,619	8.6%	\$1,734,536,916	\$1,581,056,707	\$153,480,209	9.7%
Fiscal Year Total			\$1,366,368,814	\$3,935,220,022			\$368,168,102	\$1,142,241,630			\$1,734,536,916	\$5,077,461,652		

* FY 18 includes 2 days; FY 17 includes 3 days

** FY 18 includes 6 days; FY 17 includes 5 days

Texas Lottery Commission Fiscal Year Over Year Change in Sales



Note: Week 1 is not a full week of sales as this report is prepared on a Fiscal Year basis.

Texas Lottery Commission
Scratch Tickets by Price Point
Sales, Prize Expense, Sales Contribution and Payout Percentage With Year Over Year Changes
Unaudited

Fiscal Year	Price Point	# of Active Games	FY Sales	% of Scratch Ticket Sales	Year over Year Change in Sales	FY Prize Expense	Year over Year Change in Prize Expense	FY Sales Contribution	Year over Year Change in Contribution	Average Prize Payout %	Year over Year Change in Payout %
2017	\$1.00	17	49,330,808	4.0%		29,803,394		19,527,414		60.4%	0.3%
Through	\$2.00	23	104,857,074	8.4%		68,298,946		36,558,128		65.1%	-0.1%
12/31/2016	\$3.00	8	85,472,832	6.9%		56,341,703		29,131,129		65.9%	0.0%
	\$5.00	42	394,138,860	31.7%		267,803,943		126,334,917		67.9%	0.0%
	\$10.00	16	261,316,420	21.0%		184,324,247		76,992,173		70.5%	0.5%
	\$20.00	11	283,310,280	22.8%		212,290,525		71,019,755		74.9%	0.0%
	\$50.00	4	63,736,950	5.1%		49,595,414		14,141,536		77.8%	0.0%
Total		121	\$1,242,163,224			\$868,458,171		\$373,705,053		69.9%	0.5%
2018	\$1.00	18	50,783,990	3.7%		30,692,729		20,091,261		60.4%	0.3%
Through	\$2.00	18	95,412,670	7.0%		62,079,009		33,333,661		65.1%	-0.1%
12/30/2017	\$3.00	10	96,898,479	7.1%		63,926,378		32,972,101		66.0%	0.1%
	\$5.00	47	390,336,945	28.6%		265,382,222		124,954,723		68.0%	0.0%
	\$10.00	17	332,135,060	24.3%		232,688,982		99,446,078		70.1%	-0.3%
	\$20.00	15	294,586,920	21.6%		220,799,925		73,786,995		75.0%	0.0%
	\$50.00	4	106,214,750	7.8%		82,811,071		23,403,679		78.0%	0.1%
Total		129	\$1,366,368,814			\$958,380,315		\$407,988,499		70.1%	0.4%
Variance	\$1.00	1	1,453,182		2.9%	889,335	3.0%	563,847	2.9%	0.02%	
2018 to	\$2.00	-5	-9,444,404		-9.0%	-6,219,936	-9.1%	-3,224,468	-8.8%	-0.07%	
2017	\$3.00	2	11,425,647		13.4%	7,584,675	13.5%	3,840,972	13.2%	0.05%	
	\$5.00	5	-3,801,915		-1.0%	-2,421,721	-0.9%	-1,380,194	-1.1%	0.04%	
	\$10.00	1	70,818,640		27.1%	48,364,735	26.2%	22,453,905	29.2%	-0.48%	
	\$20.00	4	11,276,640		4.0%	8,509,400	4.0%	2,767,240	3.9%	0.02%	
	\$50.00	0	42,477,800		66.6%	33,215,657	67.0%	9,262,143	65.5%	0.15%	
Total		8	\$124,205,590		10.0%	\$89,922,144	10.4%	\$34,283,446	9.2%	0.23%	

Notes - Scratch Ticket Variances

Texas Lottery Commission
Scratch Tickets by Price Point
Sales, Prize Expense, Sales Contribution and Payout Percentage With Year Over Year Changes
Unaudited

		FY 2018		FY 2017		Difference
Sales	\$1 - \$5		\$633,432,084		\$633,799,574	-\$367,490
Prize Exp.	\$1 - \$5		\$422,080,338		\$422,247,985	-\$167,648
Sales Cont.	\$1 - \$5		\$211,351,746		\$211,551,589	-\$199,842
Prize Exp. %	\$1 - \$5		66.6%		66.6%	0.0%
		FY 2018		FY 2017		Difference
Sales	\$10 - \$50		\$732,936,730		\$608,363,650	\$124,573,080
Prize Exp.	\$10 - \$50		\$536,299,977		\$446,210,186	\$90,089,791
Sales Cont.	\$10 - \$50		\$196,636,753		\$162,153,464	\$34,483,289
Prize Exp. %	\$10 - \$50		73.2%		73.3%	-0.2%
		FY 2018		FY 2017		Difference
Sales	Scratch		\$1,366,368,814		\$1,242,163,224	\$124,205,590
Prize Exp.	Scratch		\$958,380,315		\$868,458,171	\$89,922,144
Sales Cont.	Scratch		\$407,988,499		\$373,705,053	\$34,283,446
Prize Exp. %	Scratch		70.1%		69.9%	0.2%

		FY 2018		FY 2017		Difference
Sales	\$1 - \$10		\$965,567,144		\$895,115,994	\$70,451,150
Prize Exp.	\$1 - \$10		\$654,769,319		\$606,572,232	\$48,197,087
Sales Cont.	\$1 - \$10		\$310,797,825		\$288,543,762	\$22,254,063
Prize Exp. %	\$1 - \$10		67.8%		67.8%	0.0%
		FY 2018		FY 2017		Difference
Sales	\$20 - \$50		\$400,801,670		\$347,047,230	\$53,754,440
Prize Exp.	\$20 - \$50		\$303,610,995		\$261,885,939	\$41,725,057
Sales Cont.	\$20 - \$50		\$97,190,675		\$85,161,291	\$12,029,383
Prize Exp. %	\$20 - \$50		75.8%		75.5%	0.3%
		FY 2018		FY 2017		Difference
Sales	Scratch		\$1,366,368,814		\$1,242,163,224	\$124,205,590
Prize Exp.	Scratch		\$958,380,315		\$868,458,171	\$89,922,144
Sales Cont.	Scratch		\$407,988,499		\$373,705,053	\$34,283,446
Prize Exp. %	Scratch		70.1%		69.9%	0.2%

Texas Lottery Commission
Weekly Sales Summary
& Comparison to Previous Week
 Unaudited

	Week Ending 12/30/2017		Week Ending 12/23/2017			
	<u>THIS WEEK</u>	% of Sales	<u>LAST WEEK</u>	% of Sales	<u>\$ change</u>	<u>% change</u>
Total Sales	<u>\$124,901,105</u>		<u>\$115,103,496</u>		<u>\$9,797,610</u>	8.51%
Scratch Tickets	<u>\$88,089,746</u>	70.5%	<u>\$87,941,872</u>	76.4%	<u>\$147,875</u>	0.17%
Lotto	\$2,360,842	1.9%	\$2,124,516	1.8%	\$236,326	11.12%
Lotto Extra	\$519,750	0.4%	\$469,230	0.4%	\$50,520	10.77%
Pick 3	\$4,652,815	3.7%	\$4,942,394	4.3%	-\$289,579	-5.86%
Pick 3 Sum It Up	\$94,254	0.1%	\$97,078	0.1%	-\$2,824	-2.91%
Cash Five	\$811,994	0.7%	\$837,255	0.7%	-\$25,261	-3.02%
Texas Two Step	\$1,034,373	0.8%	\$918,506	0.8%	\$115,867	12.61%
Mega Millions	\$8,764,544	7.0%	\$5,341,776	4.6%	\$3,422,768	64.08%
Megaplier	\$1,147,310	0.9%	\$751,656	0.7%	\$395,654	52.64%
MM Just the Jackpot	\$65,076	0.1%	\$48,156	0.0%	\$16,920	35.14%
Daily 4	\$2,060,790	1.6%	\$2,180,958	1.9%	-\$120,169	-5.51%
Daily 4 Sum It Up	\$119,090	0.1%	\$120,594	0.1%	-\$1,504	-1.25%
Powerball	\$12,711,198	10.2%	\$7,471,900	6.5%	\$5,239,298	70.12%
Power Play	\$1,676,130	1.3%	\$1,054,970	0.9%	\$621,160	58.88%
All or Nothing	\$555,378	0.4%	\$557,540	0.5%	-\$2,162	-0.39%
Texas Triple Chance	<u>\$237,816</u>	0.2%	<u>\$245,096</u>	0.2%	<u>-\$7,280</u>	-2.97%
Total Draw Game Sales	<u>\$36,811,359</u>		<u>\$27,161,624</u>		<u>\$9,649,735</u>	35.53%

* Totals may not sum due to rounding.

Texas Lottery Commission
Weekly Sales Summary
Unaudited

SCRATCH TICKETS
TOP TEN SELLING GAMES

For the week ending: 12/30/2017

Rank	Price Point	Game	Sales (Millions)
1	\$ 20	MEGA 7'S	\$ 5.331
2	\$ 5	LUCKY 7'S	\$ 4.726
3	\$ 10	\$50 OR \$100!	\$ 4.397
4	\$ 10	MEGA LOTERIA	\$ 4.340
5	\$ 50	TEXAS LOTTERY PLATINUM	\$ 3.754
6	\$ 5	\$500 FRENZY	\$ 2.916
7	\$ 10	TEXAS LOTTERY BLACK	\$ 2.703
8	\$ 20	INSTANT MILLIONAIRE	\$ 2.635
9	\$ 5	SUPER LOTERIA	\$ 2.630
10	\$ 20	TEXAS LOTTERY GOLD	\$ 2.582

Texas Lottery Commission
Prize Payout Tracking Report
Unaudited

Through the week ending: 12/30/2017

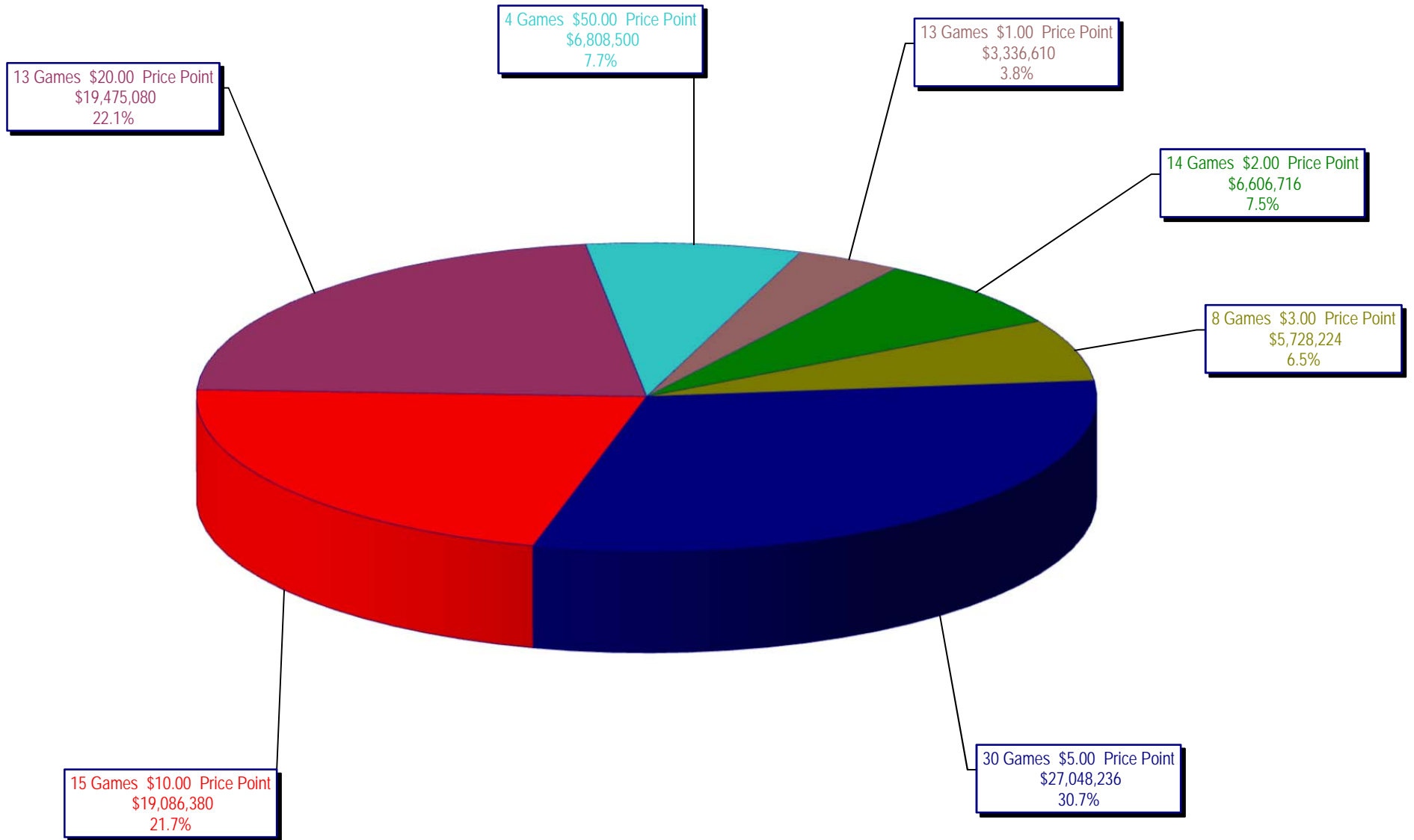
Draw Game Sales

		FY Sales Through Week Ending 12/30/2017		FY Prize Expense Through Week Ending 12/30/2017	Actual* Prize Payout	Base Payout (Prize Pool)
Lotto	\$	38,134,018	\$	24,665,432	64.68%	50.00%
Lotto Extra		8,183,082		4,664,500	57.00%	53.70%
Pick 3		82,670,229		38,398,710	46.45%	50.00%
Pick 3 Sum It Up		1,619,538		754,160	46.57%	50.00%
Cash Five		14,101,216		7,050,614	50.00%	50.00%
Texas Two Step		16,041,170		8,039,725	50.12%	50.00%
Mega Millions		53,129,215		27,467,923	51.70%	50.00%**
Megaplier		10,101,137		5,167,257	51.16%	N/A
MM Just the Jackpot		547,470		266,641	48.70%	50.00%**
Daily 4		35,696,066		21,716,475	60.84%	50.00%
Daily 4 Sum It Up		1,939,642		764,092	39.39%	50.00%
Powerball		80,079,339		40,165,457	50.16%	50.00%**
Power Play		12,054,991		6,049,261	50.18%	N/A
All or Nothing		9,643,904		5,728,130	59.40%	55.98%
Texas Triple Chance		4,227,086		2,123,322	50.23%	54.42%
Totals	\$	368,168,102	\$	193,021,698	52.43%	

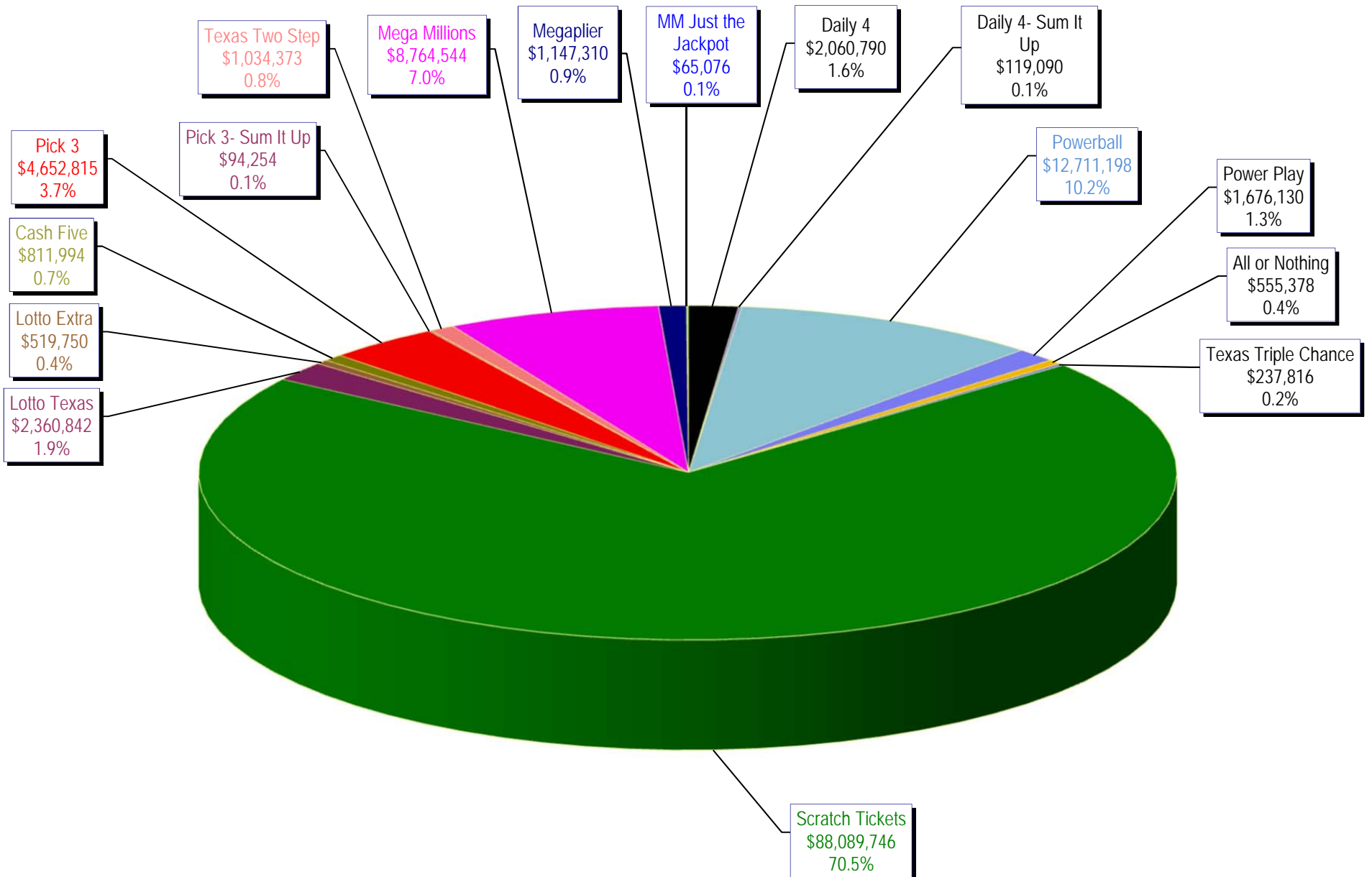
* Before Unclaimed Prizes

**Estimated; depends on # of guaranteed prizes won in Texas

Texas Lottery Commission
Scratch Ticket Sales
For the week ending 12/30/2017
(Unaudited)



Texas Lottery Commission
All Game Sales
 For the week ending 12/30/2017
 (Unaudited)



Texas Lottery Commission - Weekly Sales Summary for FY 2017 (Unaudited)

Week Ended	Scratch Tickets	New Games & Dates	Lotto Texas		Jackpot		Lotto Extra	Pick 3	Pick 3 Sum It Up	Cash Five	Texas Two Step		Jackpot		Mega Millions	Jackpot		Megaplier	MM Just the Jackpot	Daily 4	Daily 4 Sum It Up	Powerball	Jackpot		Power Play	All or Nothing	Texas Triple Chance	Total	Per Cap.
			W	S	W	S					M	TH	T	F		W	S												
9/2/2017*	66,786,499	0	1,882,138	7.75	8	407,969	4,127,448	87,462	745,315	757,964	225	250	1,839,333	45	53	546,532			1,675,002	88,460	3,160,562	53	68	527,201	510,296	226,818	83,368,998	2.99	
9/9/2017	71,784,232	1894 (\$1.N); 1895 (\$3.N); 1896 (\$5.N); 1897 (\$10.N); 1898 (\$20.N) - 9/05/17	2,030,456	8.25	9	434,404	4,673,693	94,976	810,225	814,157	200	225	2,116,454	61	70	610,101			1,864,288	98,842	3,815,824	83	102	614,504	550,992	250,086	90,563,233	3.25	
9/16/2017	72,828,393	0	2,072,973	9.5	10.25	441,815	4,761,239	95,825	803,128	1,009,847	275	400	2,218,181	76	86	632,423			1,969,938	107,496	4,120,318	115	132	647,273	549,860	248,976	92,507,685	3.32	
9/23/2017	71,147,147	2000 (\$5.N); 1885 (\$10.N) - 9/18/17	2,083,698	10.75	11.5	444,009	4,652,157	91,944	799,261	958,113	550	200	2,417,135	94	104	676,790			1,999,292	111,399	3,062,637	40	53	505,638	554,074	245,596	89,748,889	3.22	
9/30/2017	74,749,619	0	2,123,157	12	12.75	453,258	4,787,745	93,462	817,582	914,011	225	300	1,798,854	15	20	540,169			2,140,708	114,176	3,298,744	66	80	535,906	567,658	251,252	93,186,301	3.34	
10/7/2017	78,134,381	1857 (\$1.N); 1871 (\$5.N); 2002 (\$20.N) - 10/02/17	2,158,233	13.5	14	461,982	4,884,513	93,622	837,916	1,157,363	425	575	1,859,000	25	30	555,420			2,086,885	112,246	3,678,352	94	112	585,624	570,242	255,884	97,431,662	3.50	
10/14/2017	74,084,207	0	2,161,597	14.75	15.5	460,731	4,743,121	91,735	812,165	832,638	200	225	1,899,412	36	43	564,073			2,060,922	109,910	4,013,728	128	143	621,796	564,614	248,894	93,269,542	3.35	
10/21/2017	77,631,892	2003 (\$2.N); 2004 (\$5.N); 1899 (\$50.N) - 10/16/17	2,191,085	16	16.75	466,612	4,682,503	94,156	810,073	1,008,511	300	425	1,677,423	15	20	505,340			2,117,469	116,022	4,422,740	156	173	670,007	563,200	248,496	97,205,528	3.49	
10/28/2017	76,385,130	0	2,227,162	17.25	18.25	475,194	4,654,638	92,765	797,066	786,381	200	200	1,737,391	25	30	493,983	22,971		2,144,198	121,467	3,852,082	191	40	595,303	547,396	240,638	95,173,764	3.42	
11/4/2017	78,814,323	0	2,333,965	18.75	19.25	494,349	4,926,697	96,245	820,269	887,674	225	275	2,753,000	40	48	421,360	112,668		2,205,239	114,585	3,078,822	52	64	500,061	571,658	248,038	98,378,952	3.53	
11/11/2017	78,572,697	2005 (\$1.N); 2006 (\$3.N); 2007 (\$5.N); 2008 (\$10.N) - 11/06/17	2,315,922	19.75	20.5	490,024	4,901,274	94,521	817,975	894,972	400	200	2,652,012	59	71	410,066	62,832		2,069,360	110,879	3,183,712	75	90	507,890	563,738	242,264	97,890,137	3.51	
11/18/2017	81,674,704	2085 (\$2.N); 1891 (\$5.N); 2011 (\$10.N) - 11/15/17	2,379,541	21.25	21.75	504,693	4,782,395	93,156	818,168	882,520	225	275	2,820,440	82	95	433,282	53,445		2,053,707	108,480	3,638,718	103	119	564,829	562,306	242,322	101,612,705	3.65	
11/25/2017	84,916,870	0	2,353,671	22.5	23.25	504,985	4,590,443	87,556	779,967	1,056,541	400	525	2,980,136	106	119	452,693	45,225		1,908,926	99,032	3,780,406	134	149	582,194	522,808	223,942	104,885,393	3.76	
12/2/2017	81,453,005	1862 (\$5.N) - 11/29/17	2,485,060	24	24.75	527,939	4,873,294	92,503	822,515	1,037,952	700	200	3,461,973	132	145	516,938	45,540		2,057,256	111,002	4,218,618	163	177	638,061	556,758	239,766	103,138,180	3.70	
12/9/2017	81,251,421	2019 (\$1.N); 2010 (\$5.N); 2014 (\$20.N) - 12/04/17	1,889,914	5	5	412,797	4,711,132	88,700	815,769	867,201	225	275	3,625,922	160	176	538,523	45,915		2,019,801	112,110	4,674,778	193	212	693,130	546,064	235,350	102,528,526	3.68	
12/16/2017	83,850,250	1877 (\$5.N) - 12/11/17	1,956,432	5.25	5.5	429,971	4,788,793	92,152	818,587	899,138	400	200	4,204,546	191	208	610,115	45,642		2,099,981	116,295	5,539,284	229	250	809,986	551,440	237,436	107,050,047	3.84	
12/23/2017	87,941,872	1879 (\$2.N); 2013 (\$5.N) - 12/18/17	2,124,516	5	5.25	469,230	4,942,394	97,078	837,255	918,506	225	275	5,341,776	223	253	751,656	48,156		2,180,958	120,594	7,471,900	269	300	1,054,970	557,540	245,096	115,103,496	4.13	
12/30/2017	88,089,746	0	2,360,842	5.5	5.75	519,750	4,652,815	94,254	811,994	1,034,373	400	550	8,764,544	277	306	1,147,310	65,076		2,060,790	119,090	12,711,198	337	384	1,676,130	555,378	237,816	124,901,105	4.48	
weekly change	0.2%		11.1%			10.8%	-5.9%	-2.9%	-3.0%	12.6%			64.1%			52.6%	35.1%		-5.5%	-1.2%	70.1%			58.9%	-0.4%	-3.0%		8.5%	
SALES			SALES			SALES	SALES	SALES	SALES	SALES			SALES			SALES	SALES		SALES	SALES	SALES			SALES	SALES	SALES	SALES	% of Sales	
Calendar Year to date 2017	4,059,425,612		113,819,418			23,568,749	250,930,803	4,898,787	43,123,132	52,429,378			149,723,726			35,644,583	547,470		101,051,574	5,434,267	305,071,132			42,817,084	28,971,876	13,484,270	5,230,941,860	100.0%	
Fiscal Year to date 2018	1,366,368,814		38,134,018			8,183,082	82,670,229	1,619,538	14,101,216	16,041,170			53,129,215			10,101,137	547,470		35,696,066	1,939,642	80,079,339			12,054,991	9,643,904	4,227,086	1,734,536,916	100.0%	

*Full week includes 5 days from FY17