



WEEKLY SALES SUMMARY

Unaudited

Week Ending: 12/31/2022

Texas Lottery Commission
Fiscal Year to Date Sales Comparison
Unaudited

Through the Week Ending: 12/31/2022 (18 weeks)

Sales by Game	FY 2021*	FY 2022**	FY 2023	\$ Change		% Change	
				FY 2023 to FY 2021	FY 2023 to FY 2022 to	FY 2023 to FY 2021	FY 2023 to FY 2022 to
Scratch Tickets	\$ 2,024,467,935	\$ 2,210,956,418	\$ 2,190,560,803	\$ 166,092,868	\$ -20,395,615	8.2%	-0.9%
Lotto Texas	52,771,923	44,301,691	45,394,693	-7,377,230	1,093,002	-14.0%	2.5%
Lotto Extra	15,026,573	13,854,370	15,050,613	24,040	1,196,243	0.2%	8.6%
Pick 3	92,868,723	92,487,351	87,271,654	-5,597,070	-5,215,697	-6.0%	-5.6%
Pick 3 Fireball	7,787,394	8,499,689	8,622,790	835,396	123,101	10.7%	1.4%
Cash Five	16,839,950	16,789,976	16,727,956	-111,994	-62,020	-0.7%	-0.4%
Texas Two Step	20,687,205	20,586,583	20,728,511	41,306	141,928	0.2%	0.7%
Mega Millions	77,629,266	72,447,718	113,733,416	36,104,150	41,285,698	46.5%	57.0%
Megaplier	13,481,297	13,249,069	21,090,383	7,609,086	7,841,314	56.4%	59.2%
MM Just the Jackpot	316,416	279,318	423,342	106,926	144,024	33.8%	51.6%
Daily 4	40,163,020	40,142,407	40,765,078	602,058	622,671	1.5%	1.6%
Daily 4 Fireball	6,227,652	7,443,980	7,862,768	1,635,117	418,788	26.3%	5.6%
Powerball	78,618,713	145,324,232	245,247,317	166,628,604	99,923,085	211.9%	68.8%
Power Play	13,758,472	25,399,202	43,953,712	30,195,240	18,554,510	219.5%	73.1%
All or Nothing	13,457,240	14,430,406	16,901,639	3,444,399	2,471,233	25.6%	17.1%
Total	\$ 2,474,101,779	\$ 2,726,192,410	\$ 2,874,334,674	\$ 400,232,896	\$ 148,142,265	16.2%	5.4%

* 2 extra days

**1 extra day

Texas Lottery Commission
Fiscal Year Over Year Change in Sales
Unaudited
FY 2023 Compared to FY 2022

		SCRATCH TICKETS				DRAW GAMES				TOTAL SALES			
Week	FY 2023 Week Ending	FY 2023	FY 2022	Difference	% change - Cumulative Sales	FY 2023	FY 2022	Difference	% change - Cumulative Sales	FY 2023	FY 2022	Difference	% change - Cumulative Sales
1	9/3/2022*	\$59,864,056	\$73,465,895	(\$13,601,839)	-18.5%	\$12,762,710	\$19,754,024	(\$6,991,314)	-35.4%	\$72,626,766	\$93,219,919	(\$20,593,153)	-22.1%
2	9/10/2022	\$120,501,630	\$117,404,128	\$3,097,502	2.6%	\$24,647,158	\$30,567,724	(\$5,920,566)	-19.4%	\$145,148,788	\$147,971,852	(\$2,823,064)	-1.9%
3	9/17/2022	\$121,755,487	\$121,522,543	\$232,944	0.2%	\$25,823,942	\$34,044,343	(\$8,220,401)	-24.1%	\$147,579,429	\$155,566,886	(\$7,987,457)	-5.1%
4	9/24/2022	\$120,099,401	\$121,751,048	(\$1,651,647)	-1.4%	\$26,359,797	\$33,618,247	(\$7,258,450)	-21.6%	\$146,459,198	\$155,369,295	(\$8,910,097)	-5.7%
5	10/1/2022	\$125,323,123	\$127,128,919	(\$1,805,796)	-1.4%	\$27,923,098	\$41,420,853	(\$13,497,755)	-32.6%	\$153,246,221	\$168,549,772	(\$15,303,551)	-9.1%
6	10/8/2022	\$127,162,182	\$121,962,687	\$5,199,495	4.3%	\$29,192,379	\$31,994,174	(\$2,801,795)	-8.8%	\$156,354,561	\$153,956,861	\$2,397,700	1.6%
7	10/15/2022	\$124,858,888	\$121,035,307	\$3,823,581	3.2%	\$32,714,985	\$23,150,459	\$9,564,526	41.3%	\$157,573,873	\$144,185,766	\$13,388,107	9.3%
8	10/22/2022	\$124,123,288	\$121,223,866	\$2,899,422	2.4%	\$30,228,913	\$23,980,968	\$6,247,945	26.1%	\$154,352,201	\$145,204,834	\$9,147,367	6.3%
9	10/29/2022	\$124,664,414	\$121,466,419	\$3,197,995	2.6%	\$51,451,925	\$22,663,805	\$28,788,120	127.0%	\$176,116,339	\$144,130,224	\$31,986,115	22.2%
10	11/5/2022	\$130,564,295	\$123,385,510	\$7,178,785	5.8%	\$130,071,730	\$23,377,828	\$106,693,902	456.4%	\$260,636,025	\$146,763,338	\$113,872,687	77.6%
11	11/12/2022	\$125,975,136	\$124,592,327	\$1,382,809	1.1%	\$79,522,011	\$23,964,090	\$55,557,921	231.8%	\$205,497,147	\$148,556,417	\$56,940,730	38.3%
12	11/19/2022	\$126,256,926	\$129,630,920	(\$3,373,994)	-2.6%	\$26,419,204	\$24,189,686	\$2,229,519	9.2%	\$152,676,130	\$153,820,606	(\$1,144,476)	-0.7%
13	11/26/2022	\$118,113,088	\$121,428,296	(\$3,315,208)	-2.7%	\$25,156,447	\$24,228,401	\$928,047	3.8%	\$143,269,535	\$145,656,697	(\$2,387,162)	-1.6%
14	12/3/2022	\$123,893,014	\$128,910,581	(\$5,017,567)	-3.9%	\$27,636,806	\$26,157,280	\$1,479,526	5.7%	\$151,529,820	\$155,067,861	(\$3,538,041)	-2.3%
15	12/10/2022	\$122,961,661	\$127,275,950	(\$4,314,289)	-3.4%	\$27,612,493	\$27,055,024	\$557,470	2.1%	\$150,574,154	\$154,330,974	(\$3,756,820)	-2.4%
16	12/17/2022	\$125,411,864	\$130,658,440	(\$5,246,576)	-4.0%	\$28,618,652	\$28,123,755	\$494,897	1.8%	\$154,030,516	\$158,782,195	(\$4,751,679)	-3.0%
17	12/24/2022	\$128,542,216	\$134,332,326	(\$5,790,110)	-4.3%	\$31,843,485	\$30,887,402	\$956,083	3.1%	\$160,385,701	\$165,219,728	(\$4,834,027)	-2.9%
18	12/31/2022	\$140,490,134	\$143,781,256	(\$3,291,122)	-2.3%	\$45,788,139	\$46,057,933	(\$269,794)	-0.6%	\$186,278,273	\$189,839,189	(\$3,560,916)	-1.9%
19	1/7/2023		\$134,458,569				\$47,708,392				\$182,166,961		
20	1/14/2023		\$130,854,390				\$26,705,000				\$157,559,390		
21	1/21/2023		\$126,399,631				\$27,056,221				\$153,455,852		
22	1/28/2023		\$127,324,026				\$27,834,789				\$155,158,815		
23	2/4/2023		\$126,528,959				\$23,518,047				\$150,047,006		
24	2/11/2023		\$132,565,722				\$24,590,558				\$157,156,280		
25	2/18/2023		\$132,003,180				\$23,559,425				\$155,562,605		
26	2/25/2023		\$130,903,763				\$24,316,703				\$155,220,466		
27	3/4/2023		\$144,124,385				\$25,610,526				\$169,734,911		
28	3/11/2023		\$139,056,015				\$23,673,582				\$162,729,597		
29	3/18/2023		\$136,794,720				\$23,344,648				\$160,139,368		
30	3/25/2023		\$134,238,655				\$23,969,257				\$158,207,912		
31	4/1/2023		\$138,671,383				\$24,997,410				\$163,668,793		
32	4/8/2023		\$131,487,411				\$25,445,741				\$156,933,152		
33	4/15/2023		\$132,169,684				\$26,316,966				\$158,486,650		
34	4/22/2023		\$128,765,378				\$29,303,625				\$158,069,003		
35	4/29/2023		\$131,124,620				\$32,269,084				\$163,393,704		
36	5/6/2023		\$132,440,406				\$23,807,640				\$156,248,046		
37	5/13/2023		\$126,717,376				\$23,986,338				\$150,703,714		
38	5/20/2023		\$138,370,954				\$24,758,230				\$163,129,184		
39	5/27/2023		\$137,931,040				\$24,771,857				\$162,702,897		
40	6/3/2023		\$134,270,237				\$25,322,690				\$159,592,927		
41	6/10/2023		\$130,068,755				\$26,377,217				\$156,445,972		
42	6/17/2023		\$127,666,392				\$27,328,191				\$154,994,583		

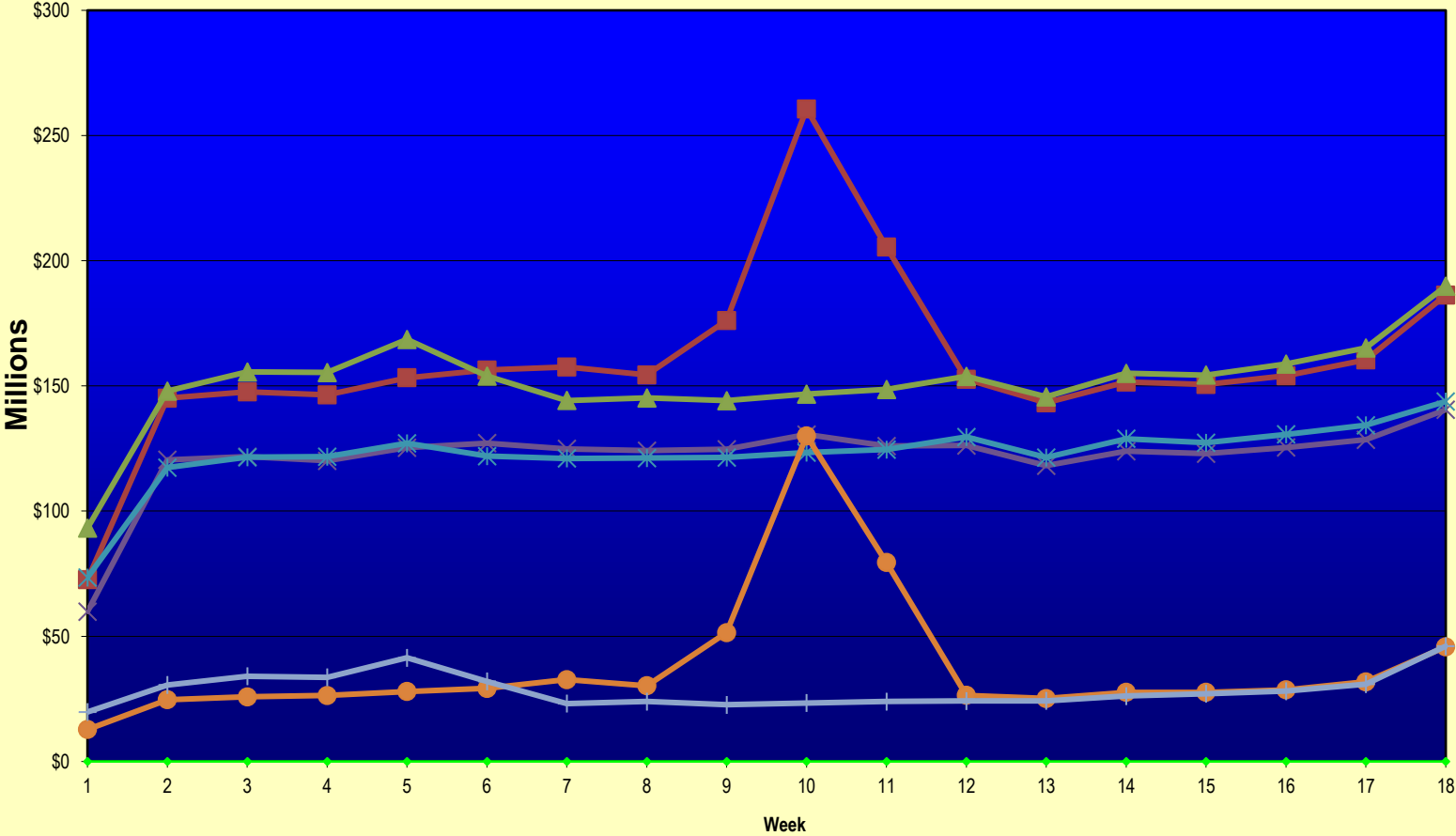
Texas Lottery Commission
Fiscal Year Over Year Change in Sales
 Unaudited
 FY 2023 Compared to FY 2022

			SCRATCH TICKETS				DRAW GAMES				TOTAL SALES			
FY 2023			FY 2023	FY 2022	Difference	% change - Cumulative Sales	FY 2023	FY 2022	Difference	% change - Cumulative Sales	FY 2023	FY 2022	Difference	% change - Cumulative Sales
Week	Week	Ending												
43	6/24/2023			\$125,712,115				\$29,158,630				\$154,870,745		
44	7/1/2023			\$129,846,487				\$29,131,632				\$158,978,119		
45	7/8/2023			\$122,397,597				\$27,312,076				\$149,709,673		
46	7/15/2023			\$123,108,736				\$31,993,516				\$155,102,252		
47	7/22/2023			\$125,198,823				\$51,611,547				\$176,810,370		
48	7/29/2023			\$130,696,142				\$133,603,658				\$264,299,800		
49	8/5/2023			\$129,834,021				\$28,039,361				\$157,873,382		
50	8/12/2023			\$125,714,094				\$24,490,464				\$150,204,558		
51	8/19/2023			\$126,311,160				\$24,109,824				\$150,420,984		
52	8/26/2023			\$124,953,004				\$24,960,195				\$149,913,199		
	8/31/2023**			\$127,499,293				\$26,136,275				\$153,635,568		
Total thru Current Week			\$2,190,560,803	\$2,210,956,418	(\$20,395,615)	-0.9%	\$683,773,871	\$515,235,992	\$168,537,880	32.7%	\$2,874,334,674	\$2,726,192,410	\$148,142,265	5.4%
Fiscal Year Total			\$2,190,560,803	\$6,787,163,541			\$683,773,871	\$1,582,355,301			\$2,874,334,674	\$8,369,518,842		

* FY 23 includes 3 days; FY 22 includes 4 days

** FY 23 includes 5 days; FY 22 includes 4 days

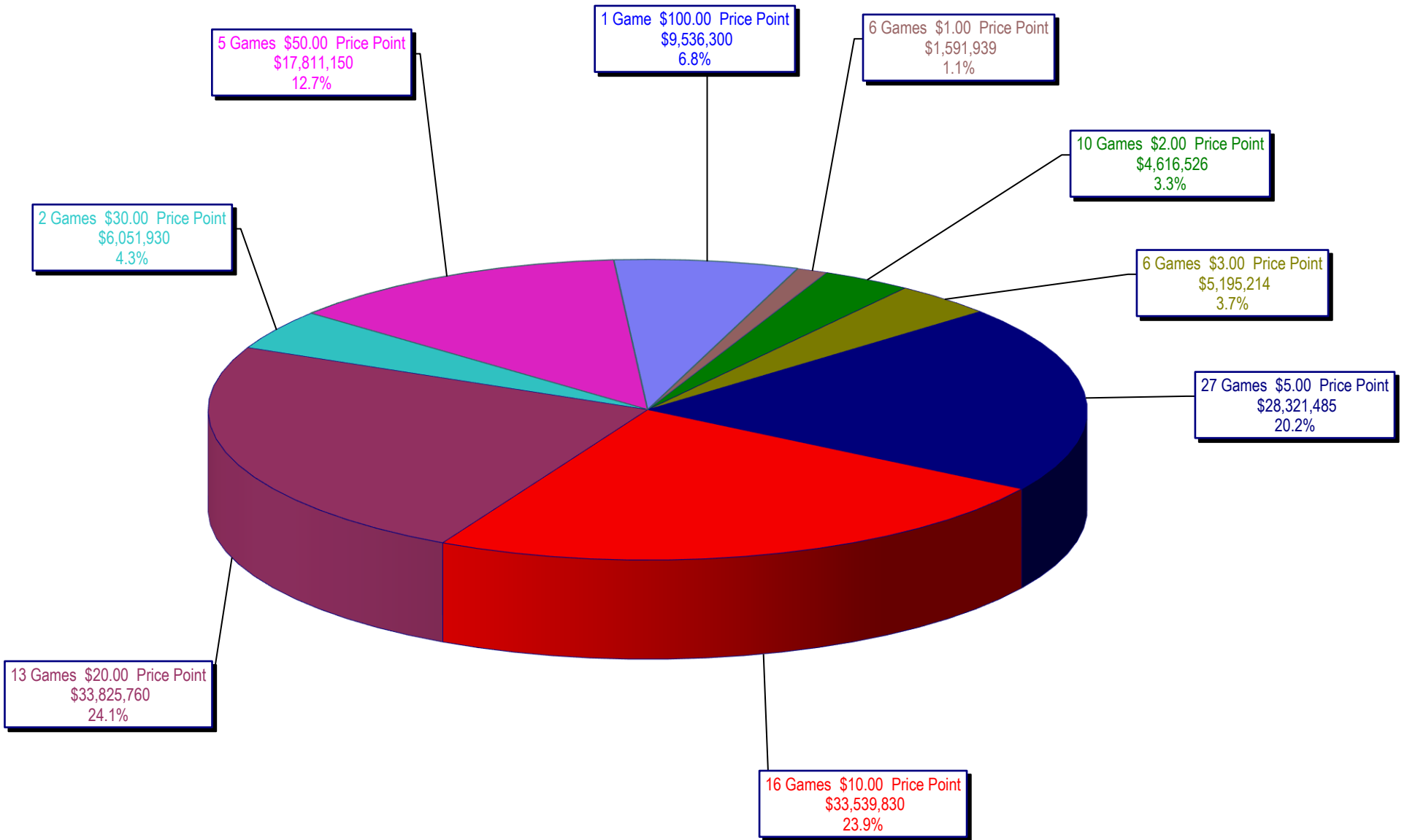
Texas Lottery Commission Fiscal Year Over Year Change in Sales



◆ Week
 ■ Total Sales 2023
 ▲ Total Sales 2022
 × Scratch Tickets 2023
 ✱ Scratch Tickets 2022
 ● Draw Games 2023
 ◆ Draw Games 2022

Note: Report is prepared on a Fiscal Year basis.

Texas Lottery Commission
Scratch Ticket Sales
For the Week Ending 12/31/2022
(Unaudited)



Texas Lottery Commission
All Game Sales
For the Week Ending 12/31/2022
(Unaudited)

